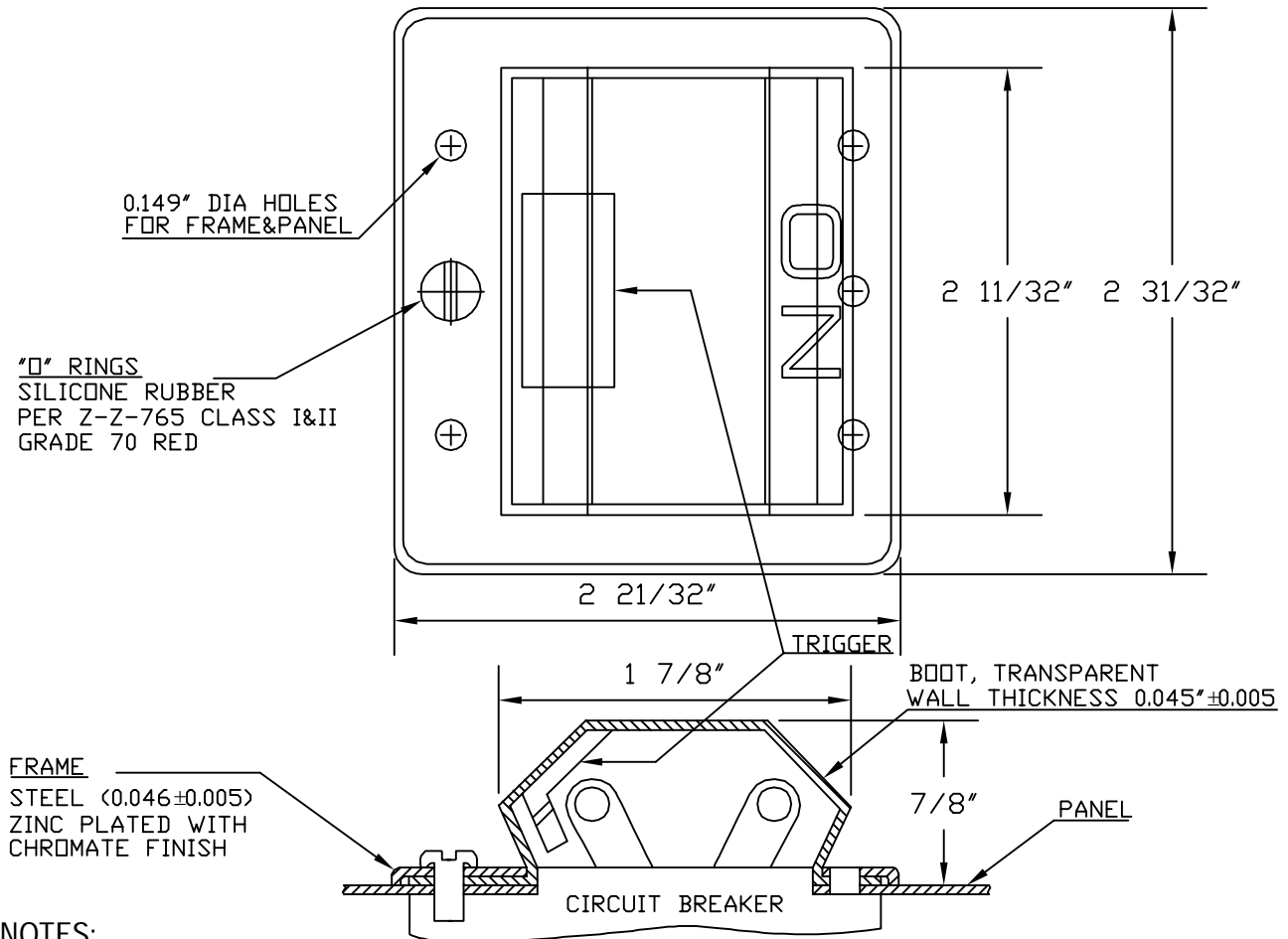


## SPECIFICATION

**Material:** Boot: APM RUBRGLAS™ (transparent silicone rubber), conforms to type ASTM D 1418. Frame: steel, zinc plated with chromate finish. Screw: SEELSKREW® (self-sealing screws), stainless steel with silicone rubber O-ring.  
**Temperature Range:** HEXSEAL: -80°F to +400°F  
**Pressure Range:** Dust tight and splashproof.  
**Operational Life:** 10,000 actuations (minimum).  
**Shelf Life:** Excess of 25 years.  
**Resistant to:** Salt spray, sunlight, ozone, weather, corona and most acids.

### Notes:

1. Mounting screws are supplied in lengths shown unless otherwise specified.
  2. New sizes and types of RUBRGLAS-SEELS® are being added regularly. Please request other types and styles as required.
- Agency Recognition:** Front Panel mounted Circuit Breaker Boots are UL- listed to UL Std. 50, types 1,2,3,12,12K and 13. Back-of-Panel mounted Circuit Breaker boots are UL-listed to UL Std. 50, type 1. Also meet CSA standards.



### NOTES:

ASSEMBLY CONSISTS OF 1 BOOT, MAT'L APM RUBRGLAS®, 1 FRAME MAT'L C.R.S. ZINC PLATED WITH CHROMATE FINISH, & 6#6-32 APM SEELSKREWS® LENGTH = 3/8 UNLESS OTHERWISE SPECIFIED

TOLERANCES: UNLESS OTHERWISE NOTED  $\pm 1/32$

J	FRAME MAT'L CHANGED, WALL THICKNESS TOL. 0.010 CHANGED TO 0.005, HOLE DIM. $\varnothing 0.160$ " CHANGED TO $\varnothing 0.149$ ", DELETED TO "DESIGN TO MEET MIL-5423" and DELETED TO SEELSKREW INFORMATION	S. GOK	05.05.09
I	SCREW QUANTITY CHANGED	S. GOK	11.05.08
H	CAD COMPUTER GENERATED		11.13.02
G	TRIGGER ADDED	M. MORSE	04.26.93
REV.	DESCRIPTION	DATE	
MAXIMUM AND MINIMUM MEASUREMENTS ARE STATED DIRECTLY ON EACH DIMENSION.		ENG.	
MAT'L: RUBRGLASS ① POLYMER TYPE ASTM D 1418		DWN.	J. PALUMBO 12.29.58
		CHKD.	J. CELLA 05.05.09
FINISH: GRADE 50 TRANSPARENT		SCALE 1:1	DWG. NO. CT-1050

THIS DRAWING COVERS PROPRIETARY ITEM AND IS THE PROPERTY OF THE APM-HEXSEAL CORPORATION.  
THIS DRAWING IS NOT TO BE COPIED OR USED WITHOUT THE WRITTEN APPROVAL OF AN OFFICER OF THE APM-HEXSEAL CORPORATION.

# Mouser Electronics

Authorized Distributor

Click to View Pricing, Inventory, Delivery & Lifecycle Information:

[APM HEXSEAL:](#)

[CT1050](#)