

## SMT20C Series

5 Vin and 12 Vin  
single output

**Total Power:** 66W  
**Input Voltage:** 4.5-5.5 Vdc  
**# of Outputs:** Single

### Special Features

- 20 A current rating
- Input voltage range:  
4.5 Vdc - 5.5 Vdc or  
10.2 Vdc - 13.8 Vdc
- Output voltage range:  
0.9 Vdc - 3.3/5.0 Vdc
- Industry leading value
  - Cost optimized design
- Excellent transient response
- Output voltage adjustability
  - Pathway for future upgrades
  - Supports silicon voltage migration
  - Resulting in reduced design-in and qualification time
- Designed in reliability:  
MTBF of >7 million hours  
per Telcordia SR-332
- Available RoHS compliant
- 2 year warranty

### Safety

UL/cUL CAN/CSA 22.2  
No. 60950  
UL 60950 File No. E139421

TÜV Product Service  
(EN60950:2000)  
Certificate No.  
B 04 08 19870 228  
CB report and certificate to  
US/6415C/UL



The SMT20C Series is a new high density open frame non-isolated converter for space-sensitive applications. Each model has a wide input range (4.5 Vdc to 5.5 Vdc or 10.2 Vdc to 13.8 Vdc) and offers a wide 0.9 Vdc to 3.3/5 V output voltage range with a 20 A load. An external resistor adjusts the output voltage from its pre-set value of 0.9 V to any value up to the maximum allowed value for that model. Typical efficiencies are 87% for the 5 V input version and 91% for the 12 V input version at full load conditions. The SMT20C series offers remote ON/OFF and overcurrent protection as standard. With full international safety approval including EN60950 and UL/cUL60950, the SMT20C reduces compliance costs and time to market



# Specifications

All specifications are typical at nominal input  $V_{in}=12V$ , full load at 25°C unless otherwise stated.

## OUTPUT SPECIFICATIONS

Voltage adjustability (See Note 5)	5 V input models 12 V input models	0.9-3.3 Vdc 0.9-5.0 Vdc
Output setpoint accuracy	With 1.0% trim resistors	±2.5%
Line regulation	Low line to high line	±0.2% max.
Load regulation		±1.3% max.
Min/max load		0 A/20 A
Overshoot (at turn on)	5 V input models 12 V input models	3.0% max. 1.0% max.
Ripple and noise 5 Hz to 20 MHz	(See Note 1)	See Table on page 2
Transient response (See Note 2)		100 mV max. deviation 200 $\mu$ s recovery to within regulation band

## INPUT SPECIFICATIONS

Input voltage range	5 V input model 12 V input model	4.5-5.5 Vdc 10.2-13.8 Vdc
Input current	Minimum load Remote OFF	65 mA 20 mA
Input current (max.) (See Note 3)	5 V input model 12 V input model	15 A @ $I_o$ max. 11 A @ $I_o$ max.
Input reflected ripple	(See Note 4)	200 mA (pk-pk)
Remote ON/OFF Logic compatibility ON OFF		Positive Logic >2.4 Vdc <0.8 Vdc
Start-up time (See Note 8)	Power up Remote ON/OFF	<20 ms <20 ms

## INPUT SPECIFICATIONS (CONTD.)

Turn ON threshold	5 $V_{in}$ 12 $V_{in}$	4.5 Vdc typ. 9.3 Vdc typ.
Turn OFF threshold	5 $V_{in}$ 12 $V_{in}$	4.3 Vdc typ. 7.8 Vdc typ.

## GENERAL SPECIFICATIONS

Efficiency		See Table on page 2
Switching frequency	Fixed	275 kHz typ.
Approvals and standards	(See Note 7)	TÜV Product Services IEC60950, UL/cUL60950
Material flammability		UL94V-0
Weight		14.2 g (0.5 oz)
Coplanarity		150 $\mu$ m
MTBF	Telcordia SR-332	7,963,574 hours

## ENVIRONMENTAL SPECIFICATIONS

Thermal performance (See Note 9)	Operating ambient, temperature Non-operating	0 °C to +80 °C -40 °C to +125 °C
-------------------------------------	--	-------------------------------------

## PROTECTION

Short-circuit protection	Hiccup, non-latching
--------------------------	----------------------

## RECOMMENDED SYSTEM CAPACITANCE

Input capacitance	(See Note 10)	270 $\mu$ F/20 mW ESR max.
Output capacitance	(See Note 10)	680 $\mu$ F/10 mW ESR max.

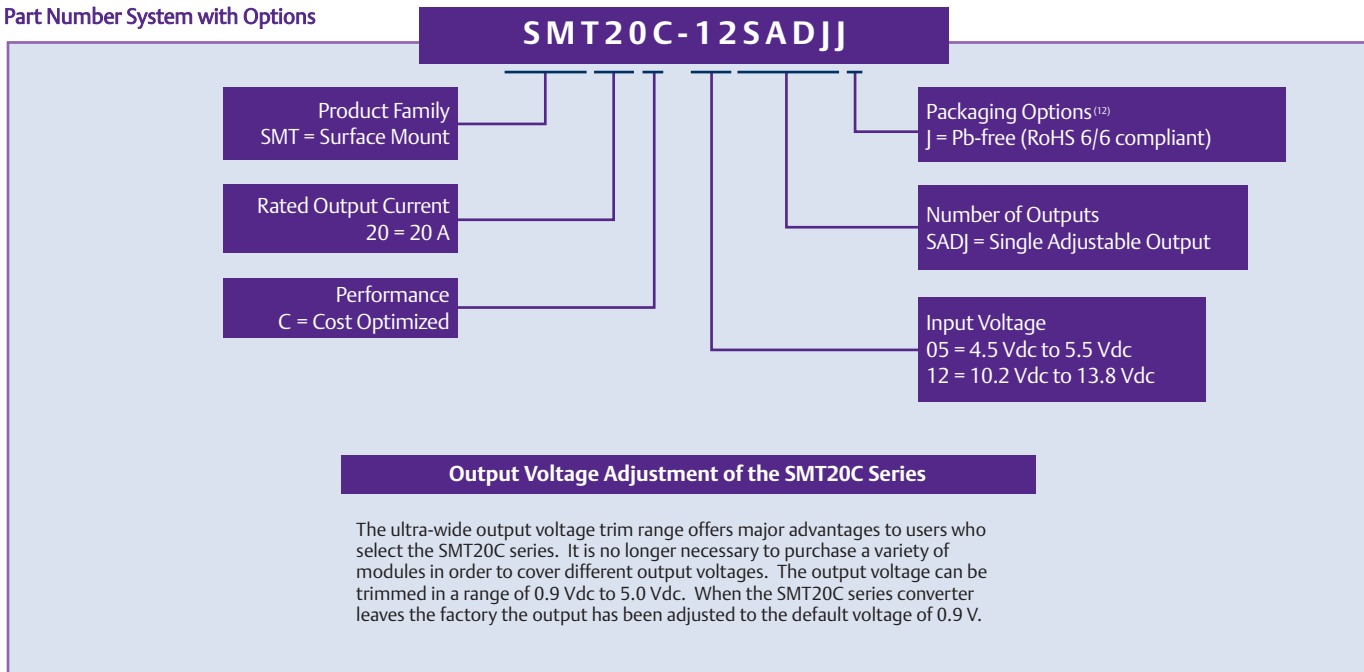
# Specifications

Rev.06.25.07  
SMT20C  
3 of 4

All specifications are typical at nominal input  $V_{in} = 12\text{ V}$ , full load at  $25^{\circ}\text{C}$  unless otherwise stated.

OUTPUT POWER (MAX.)	INPUT VOLTAGE	OVP	OUTPUT VOLTAGE <sup>(11)</sup>	OUTPUT CURRENT (MIN.)	OUTPUT CURRENT (MAX.)	MAXIMUM LOAD (TYP.)	REGULATION		MODEL NUMBER <sup>(12,13)</sup>
							LINE	LOAD	
66 W	4.5-5.5 Vdc	N/A	0.9-3.3 V	0 A	20 A	87%	$\pm 0.2\%$	$\pm 1.3\%$	SMT20C-05SADJJ
100 W	10.2-13.8 Vdc	N/A	0.9-5.0 V	0 A	20 A	91%	$\pm 0.2\%$	$\pm 1.3\%$	SMT20C-12SADJJ

## Part Number System with Options

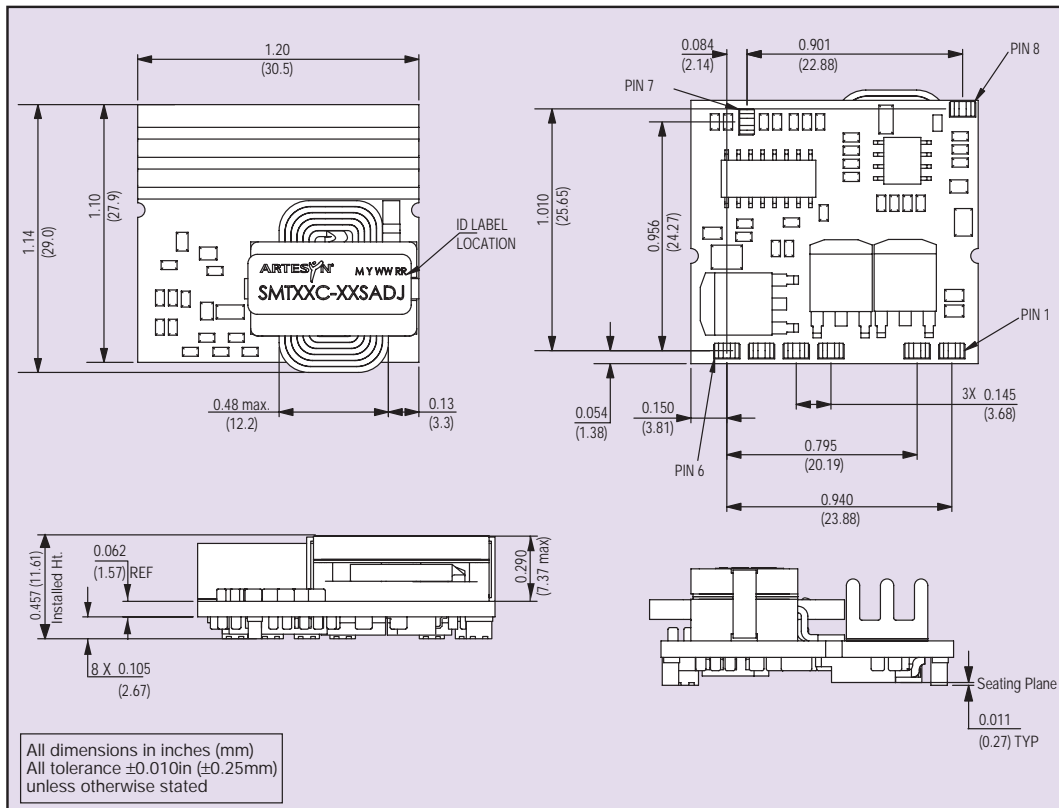


## Notes

- Measured as per recommended set-up.  $2 \times C_{in} = 270\text{ }\mu\text{F}$  (20 mW ESR max,  $C_{out} = 680\text{ }\mu\text{F}$  (10 mW ESR max).
- $di/dt = 10\text{ A}/\mu\text{s}$ ,  $V_{in} = \text{Nom}$ ,  $T_c = 25^{\circ}\text{C}$ , load change = 0.50 I<sub>o</sub> max. to 0.75 I<sub>o</sub> max. and 0.75 I<sub>o</sub> max. to 0.50 I<sub>o</sub> max. At 12 V, 0.9 V<sub>out</sub>, the max voltage deviation is 200 mV.
- External input fusing is recommended.
- Measured with external filter. See Application Note 169 for details.
- Uses external resistor from trim pin to output ground. Min value = 485  $\Omega$  for 5 V model, 280  $\Omega$  for 12 V model. See Application Note 169 for details.
- Signal line assumed  $< 3\text{ m}$  in length.
- This product is only for inclusion by professional installers within other equipment and must not be operated as a stand alone product.
- Power-up is the time from application of dc input to Power Good enabled. Remote ON/OFF is from ON/OFF asserted high to power good enabled.
- See Application Note 169 for operation above  $50^{\circ}\text{C}$ .
- See Application Note 169 for ripple current requirements.
- These models have a wide trim output. 5 V<sub>in</sub> has an output of 0.9Vdc to 3.3 Vdc and 12 V<sub>in</sub> has an output of 0.9 Vdc to 5 Vdc. An external resistor adjusts the output voltage.
- TSE RoHS 5/6 (non Pb-free) compliant versions may be available on special request, please contact your local sales representative for details.
- NOTICE: Some models do not support all options. Please contact your local Artesyn representative or use the on-line model number search tool at <http://www.artesyn.com/powergroup/products.htm> to find a suitable alternative.

## Ripple and Noise Specification

Model	Output Voltage	Pk - Pk	RMS
5 V input models	0.9 Vdc to 2.5 Vdc	30 mV	15 mV
	3.3 Vdc	40 mV	15 mV
12 V input models	0.9 Vdc to 2.5 Vdc	50 mV	25 mV
	3.3 Vdc to 5 Vdc	50 mV	25 mV



PIN CONNECTIONS	
PIN NUMBER	FUNCTION
1	Vout
2	Vout
3	Power Good
4	GND
5	GND
6	Vin
7	Trim
8	Remote ON/OFF

## Americas

5810 Van Allen Way  
Carlsbad, CA 92008  
USA  
Telephone: +1 760 930 4600  
Facsimile: +1 760 930 0698

**Europe (UK)**

Waterfront Business Park  
Merry Hill, Dudley  
West Midlands, DY5 1LX  
United Kingdom  
Telephone: +44 (0) 1384 842 211  
Facsimile: +44 (0) 1384 843 355

## Asia (HK)

16th - 17th Floors, Lu Plaza  
2 Wing Yip Street, Kwun Tong  
Kowloon, Hong Kong  
Telephone: +852 2176 3333  
Facsimile: +852 2176 3888

For global contact, visit:

[www.powerconversion.com](http://www.powerconversion.com)

**technicalsupport@powerconversion.com**

While every precaution has been taken to ensure accuracy and completeness in this literature, Emerson Network Power assumes no responsibility, and disclaims all liability for damages resulting from use of this information or for any errors or omissions.

**Emerson Network Power.**

The global leader in enabling  
business-critical continuity.

- AC Power
- Connectivity
- DC Power
- **Embedded Power**
- Inbound Power
- Integrated Cabinet Solutions
- Outside Plant
- Precision Cooling
- Site Monitoring and Services

**EmersonNetworkPower.com**

Emerson Network Power and the Emerson Network Power logo are trademarks and service marks of Emerson Electric Co.  
©2007 Emerson Electric Co.

# Mouser Electronics

Authorized Distributor

Click to View Pricing, Inventory, Delivery & Lifecycle Information:

Emerson Network Power:

[SMT20C-05SADJJ](#) [SMT20C-12SADJJ](#)