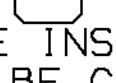
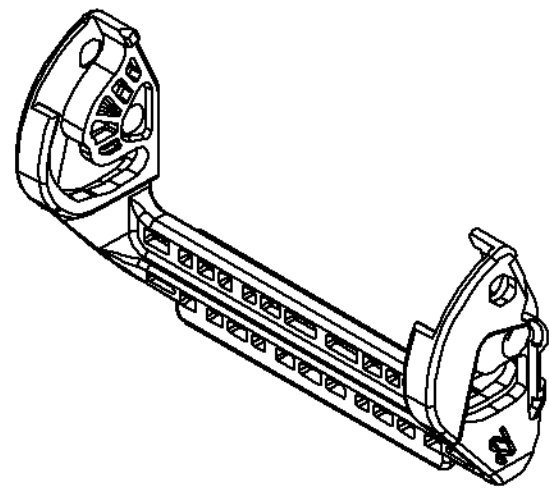
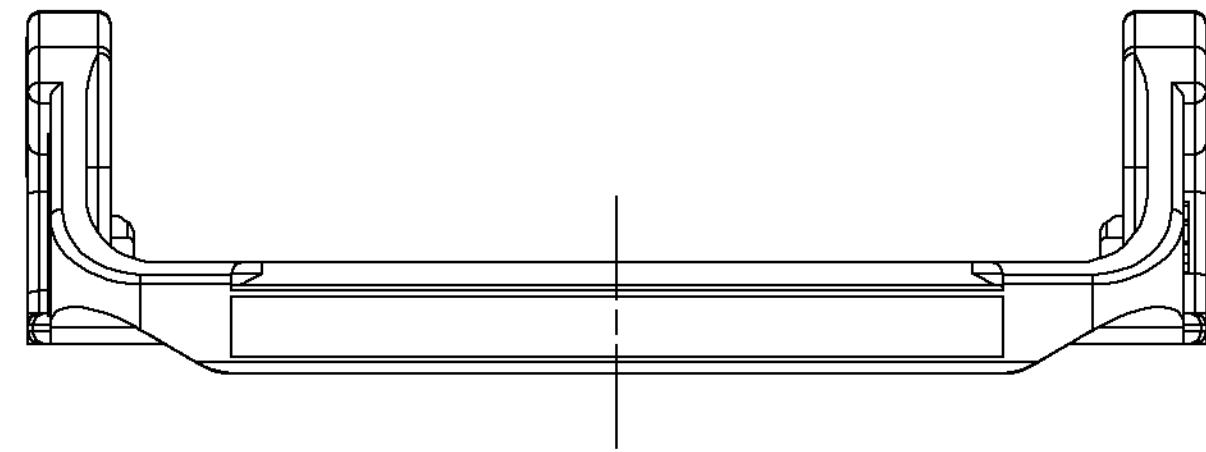
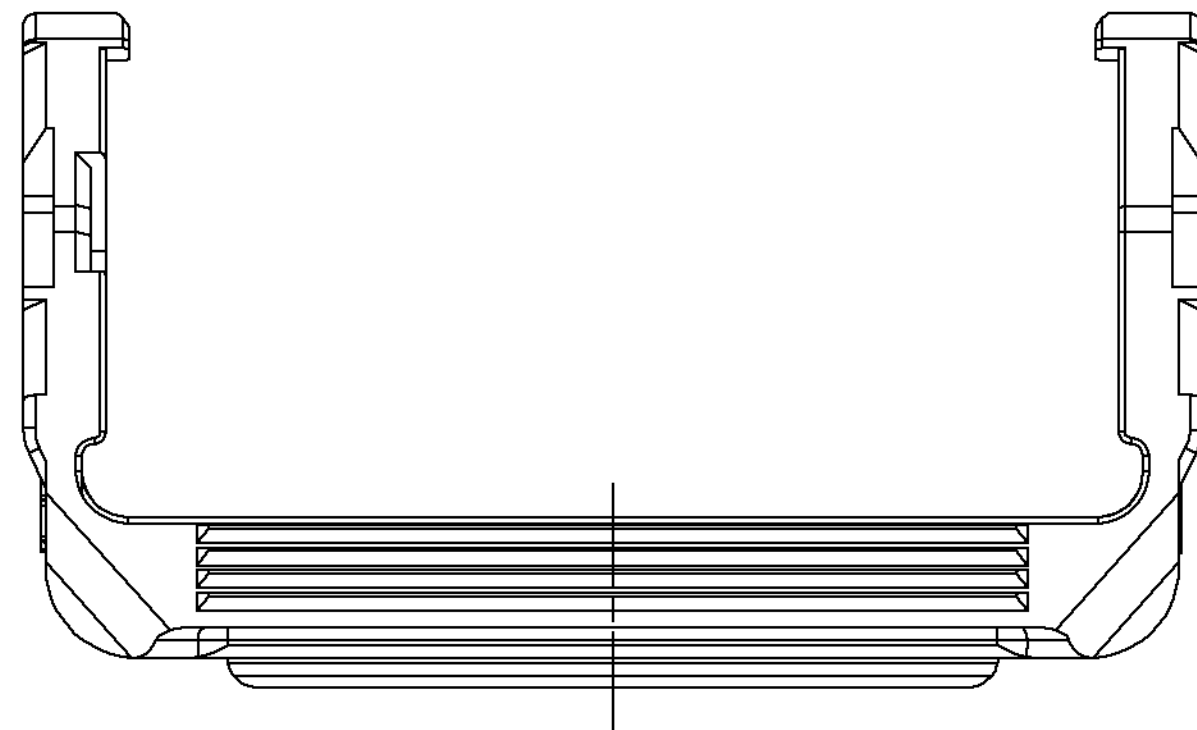
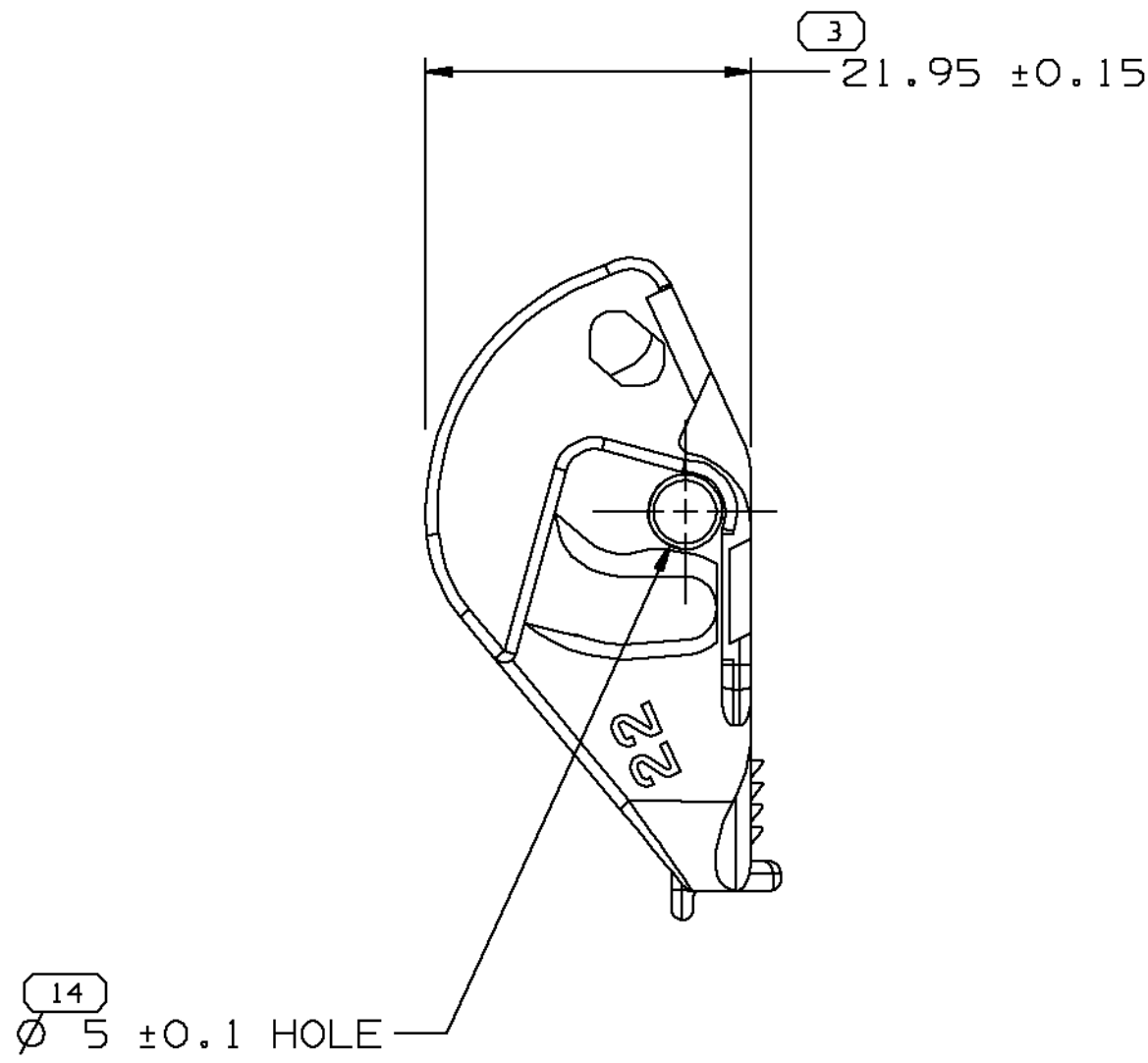
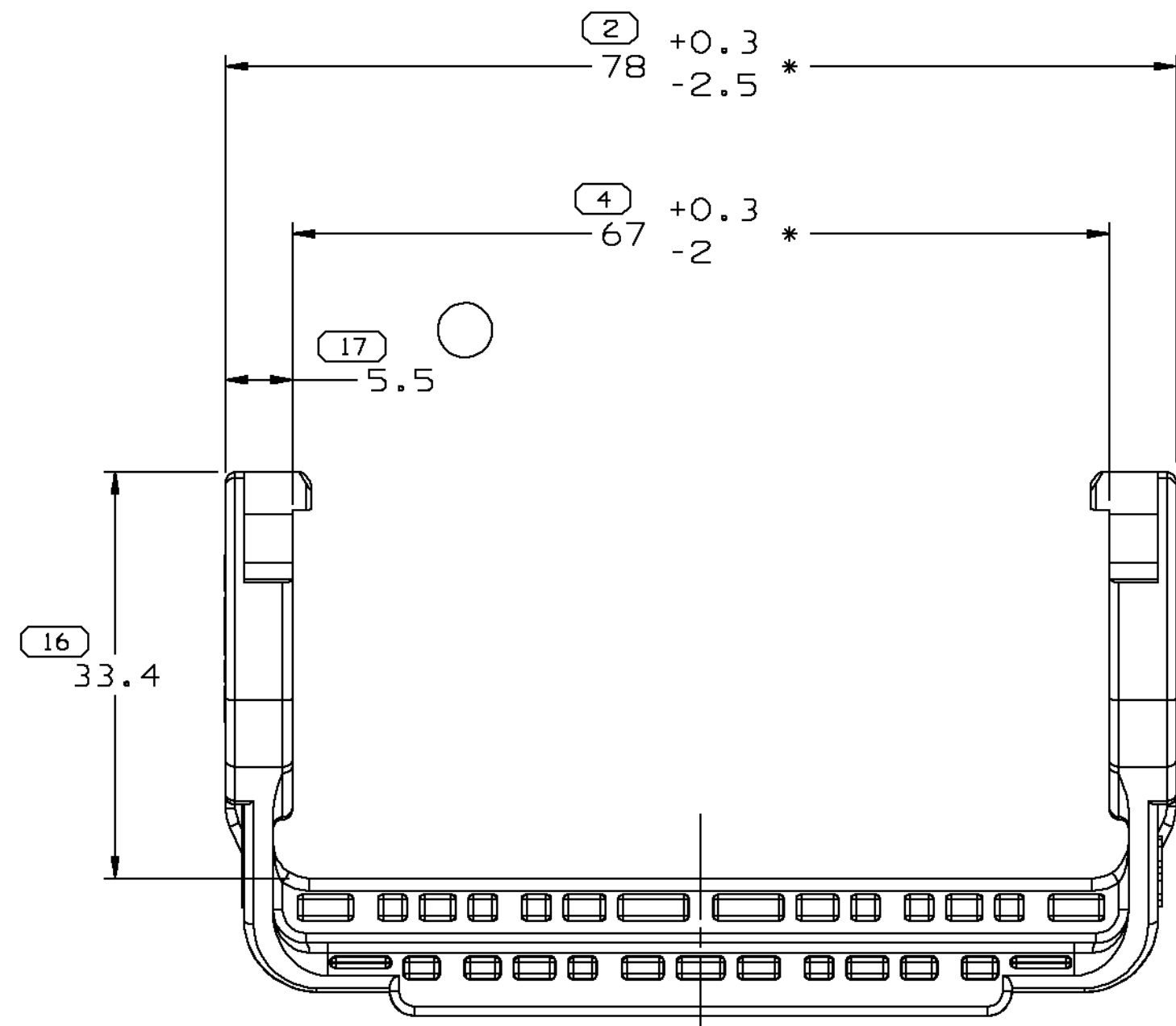
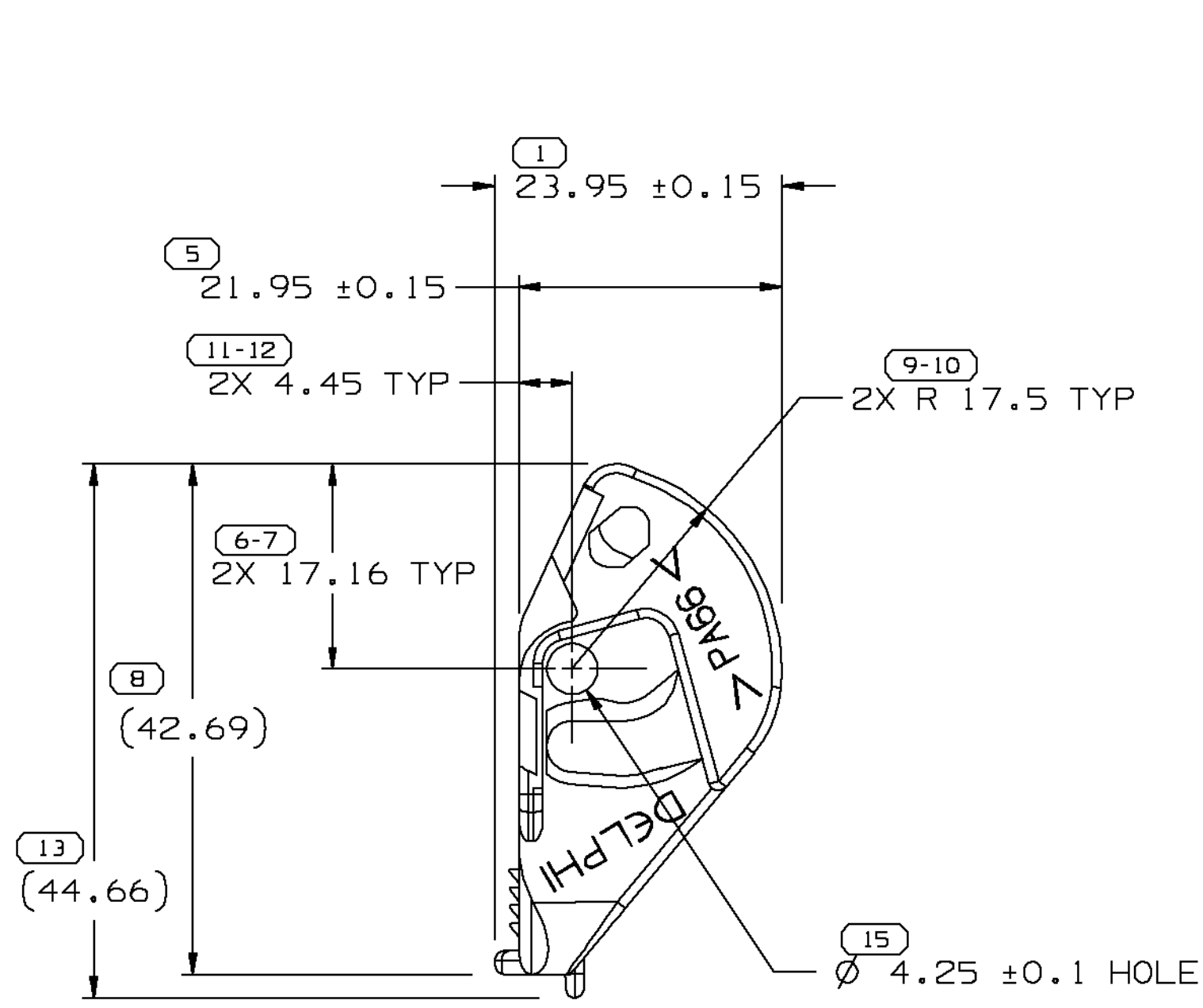


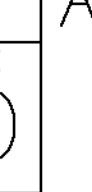
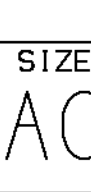
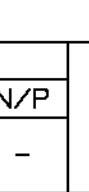
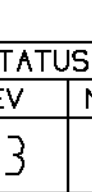
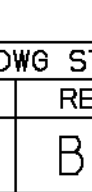
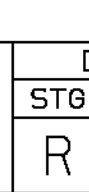
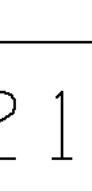
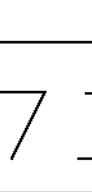
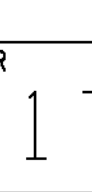
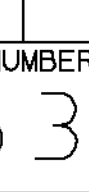
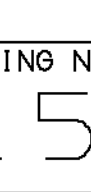
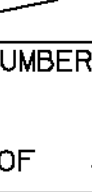
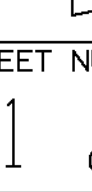
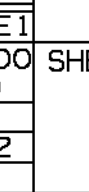
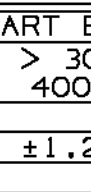
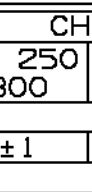
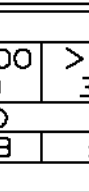
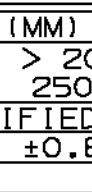
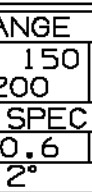
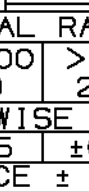
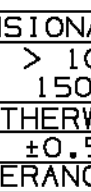
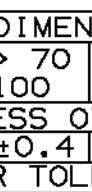
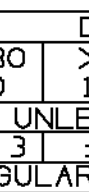
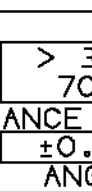
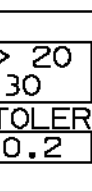
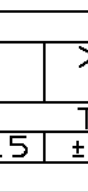
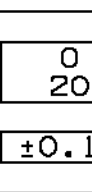
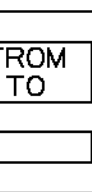
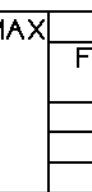
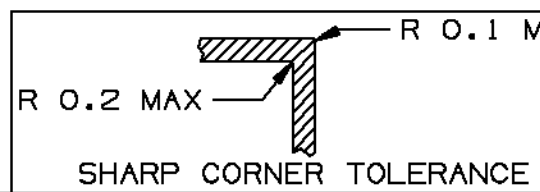
SYMBOL DEFINITION			MISSING NUMBERS	
A DIMENSION WITHOUT AN INSPECTION REPORT SYMBOL  DOES NOT REQUIRE INSPECTION. IT MAY BE CONTROLLED ON AN INDIVIDUAL COMPONENT DRAWING	TOTAL NO. OF SYMBOLS ON DRAWING	14		
	LAST NO. USED	17		

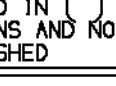
DWG STATUS					REVISION HISTORY			AUTH	DR	CK	APVD
DATE	STG	REV	CHG	N/P	ZONE						
03JA01	R	B3	-	-		CLEARED REV COL, ADDED 5.5, REVISED PSD			205527	EES	TLP AK





NOTES

- UNLESS OTHERWISE SPECIFIED AND/OR INDICATED: DIMENSIONS ARE TO FACE OF VIEW SHOWN AND AUTOMATICALLY ROUNDED BY COMPUTER FOR INSPECTION (SEE MATH MODEL FOR PRECISE DIMENSIONS). FOR ALL OTHER DIMENSIONS NOT SHOWN BUT REQUIRED FOR TOOL BUILD, SEE MATH MODEL FOR PRECISE TOOL PATH DATA.
- MATERIAL RECYCLING CODE >PA66< PER SAE J1344 TO APPEAR ON PART.
- MATING COMPONENTS OR EQUIVALENT: MALE CONNECTOR 15317322
- * DUE TO BOW.



(17) PROCESS SENSITIVE DIMENSION									
DIMENSIONS ENCLOSED IN  INDICATE REFERENCE DIMENSIONS AND NO TOLERANCE LIMITS ARE ESTABLISHED									
CHART E1									
DIMENSIONAL RANGE (MM)									
FROM	TO	0	> 20	> 30	> 70	> 100	> 150	> 200	> 300
		20	30	70	100	150	200	250	300
TOLERANCE UNLESS OTHERWISE SPECIFIED									
TOLERANCE									
±0.15 ±0.2 ±0.3 ±0.4 ±0.5 ±0.6 ±0.8 ±1 ±1.2									
ANGULAR TOLERANCE ± 2°									

DELPHI Automotive Systems			
MATERIAL SPEC R0071790 PA66 HS IM-BLU			
SUBSTANCES OF CONCERN AND RECYCLED CONTENT PER DELPHI -A 01949001			
PART DRAWING		DISTR CODE D	
CODE NUMBER 6900	DWG DATE 29JA97	SCALE 2:1	
DC SPEC	STYLE	VOLUME cm³ 5.935	
PART GEOMETRY 3D SOLID	UNLESS OTHERWISE SPECIFIED: THIS DOCUMENT IS IN ACCORDANCE WITH ASME Y14.5M - 1994 AS AMENDED BY THE GM GLOBAL DIMENSIONING AND TOLERANCING ADDENDUM - 1997. ALL GEOMETRIC TOLERANCES AND RELATED DATUMS APPLY RFS. RULE #1 (PERFECT FORM AT MMC) DOES NOT APPLY WHEN RELATIONSHIP BETWEEN FEATURES IS ESTABLISHED BY ORIENTATION OR LOCATION TOLERANCES. SEPARATE POSITION CALLOUTS MAY BE GAGED SEPARATELY REGARDLESS OF DATUM REFERENCES.		
 CHANGE RESTRICTED NO MANUAL CHANGES	REFERENCE	DR	DATE
	APVD1 E. MONCISVAIS	29JA97	
COPY OF MATH DATA DO NOT SCALE	APVD2 J. VAZQUEZ S	29JA97	
	APVD3 J. GRIFFIN	10FE97	
METRIC UNLESS OTHERWISE SPECIFIED, ALL DIMENSIONS ARE IN MILLIMETERS	APVD4		
	APVD5		
THIRD ANGLE PROJECTION 	DRAWING NAME CONN LK HANDLE CAM LEVER		
SHEET NUMBER 1 OF 1	DRAWING NUMBER 15317321	DWG STATUS R B3 -	SIZE A0

Mouser Electronics

Authorized Distributor

Click to View Pricing, Inventory, Delivery & Lifecycle Information:

[Delphi Connection Systems:](#)

[15317321](#)