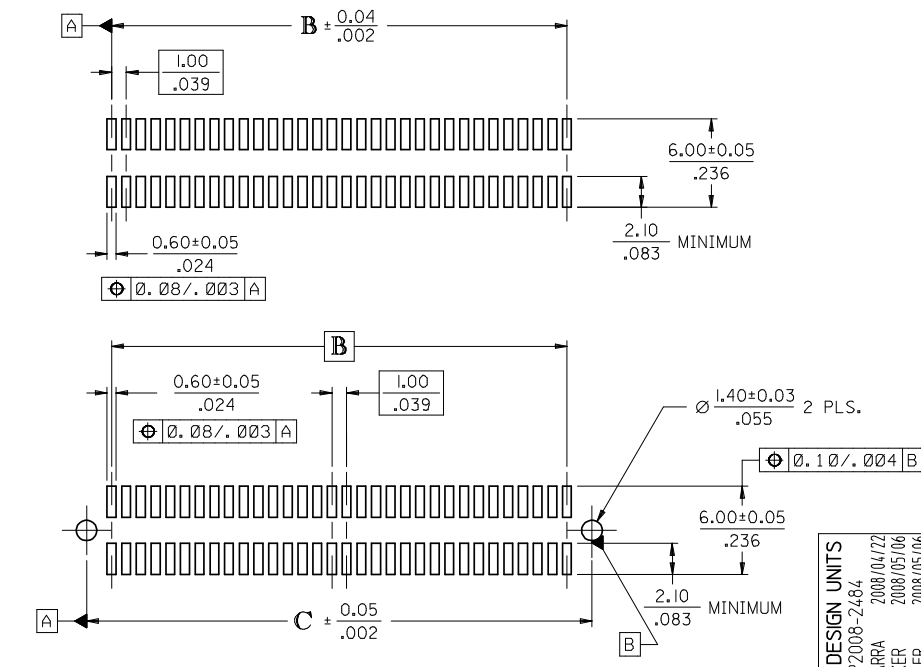


CIRCUIT SIZE	DIM. A	DIM. B	DIM. C	DIM. D
20	$\frac{13.90}{.547}$	$\frac{9.00}{.354}$	$\frac{12.40}{.488}$	$\frac{12.22}{.481}$
30	$\frac{18.90}{.744}$	$\frac{14.00}{.551}$	$\frac{17.40}{.685}$	$\frac{17.22}{.678}$
40	$\frac{23.90}{.941}$	$\frac{19.00}{.748}$	$\frac{22.40}{.882}$	$\frac{22.22}{.875}$
50	$\frac{28.90}{1.138}$	$\frac{24.00}{.945}$	$\frac{27.40}{1.079}$	$\frac{27.22}{1.072}$
60	$\frac{33.90}{1.335}$	$\frac{29.00}{1.142}$	$\frac{32.40}{1.276}$	$\frac{32.22}{1.269}$
64	$\frac{35.90}{1.413}$	$\frac{31.00}{1.220}$	$\frac{34.40}{1.354}$	$\frac{34.22}{1.347}$
70	$\frac{38.90}{1.531}$	$\frac{34.00}{1.339}$	$\frac{37.40}{1.472}$	$\frac{37.22}{1.465}$
80	$\frac{43.90}{1.728}$	$\frac{39.00}{1.535}$	$\frac{42.40}{1.669}$	$\frac{42.22}{1.662}$
84	$\frac{45.90}{1.807}$	$\frac{41.00}{1.614}$	$\frac{44.40}{1.748}$	$\frac{44.22}{1.741}$
90	$\frac{48.90}{1.925}$	$\frac{44.00}{1.732}$	$\frac{47.40}{1.866}$	$\frac{47.22}{1.859}$
100	$\frac{53.90}{2.122}$	$\frac{49.00}{1.929}$	$\frac{52.40}{2.063}$	$\frac{52.22}{2.056}$
110	$\frac{58.90}{2.319}$	$\frac{54.00}{2.126}$	$\frac{57.40}{2.260}$	$\frac{57.22}{2.253}$
120	$\frac{63.90}{2.516}$	$\frac{59.00}{2.323}$	$\frac{62.40}{2.457}$	$\frac{62.22}{2.450}$



RECOMMENDED PCB LAYOUT (WITH AND WITHOUT PEGS)
 RECOMMENDED PCB THICKNESS: $1.00 \pm 0.10 / .039 \pm .004$

NOTES:

- 64-CIRCUIT RECEPTACLE ASSEMBLY WITH PEGS AND VACUUM CAP SHOWN FOR ILLUSTRATION PURPOSES ONLY.
- HOUSING MATERIAL: G.F. THERMOPLASTIC; UL RATING: 94V-0; COLOR: WHITE
 TERMINAL MATERIAL: PHOSPHOR BRONZE; 0.205/.0080 THICK
 VACUUM CAP MATERIAL: STAINLESS STEEL; 0.255/.0100 THICK
- COPLANARITY OF SMT TAILS: 0.10/.004 MAX.
- PACKAGING SPECIFICATIONS: REFER TO CHART ON SHEET 2.
- PEGS ARE OPTIONAL. REFER TO CHART ON SHEET 2.
- VACUUM PICK & PLACE CAP IS OPTIONAL. REFER TO CHART ON SHEET 2.
- THIS PART CONFORMS TO EIA STANDARD 700 AAAB FOR 1.0mm TWO-PART CONNECTORS FOR USE WITH PARALLEL PRINTED BOARDS.
- THIS PART, WHEN MATED WITH MOLEX 1.0mm PLUG CONNECTOR SERIES 71436, CONFORMS TO MOLEX PRODUCT SPECIFICATION PS-71436-9999. REFER TO CHART ON SHEET 2 FOR MATED STACK HEIGHTS FOR THIS RECEPTACLE.
- DIMENSIONS ARE IN mm/IN. INCH DIMENSIONS SHOWN FOR REFERENCE ONLY.

PLATING PER ES-88:

30 GOLD - 0.00076/.000030 MINIMUM GOLD PLATING IN CONTACT AREA,
 0.0019/.000075 MINIMUM TIN PLATING IN TERMINAL AREA,
 OVER 0.00127/.000050 MINIMUM NICKEL PLATING OVERALL

2	K
1	K
SHT	REV

CORRECT DESIGN UNITS EC NO: UCP2008-2484 DRAWN: MSIBARRA 2008/04/22 CHKD: BBARKER 2008/05/06 APPR: SMILLER 2008/05/06	QUALITY SYMBOLS ▽=0 ▽=0	GENERAL TOLERANCES (UNLESS SPECIFIED)	DIMENSION STYLE MM/IN	SCALE 4:1	DESIGN UNITS METRIC	THIRD ANGLE PROJECTION
	4 PLACES ± --- ± ---	REED 1995/03/23	DRAWN BY DATE	TITLE ASSY, 1MM BOARD-TO-BOARD RECEPTACLE CONECTOR 8.30/327 HIGH		
	3 PLACES ± --- ± .005	CHECKED BY DATE	REED 1995/03/23	MOLEX MOLEX INCORPORATED		
	2 PLACES ± 0.13 ± .01	APPROVED BY DATE	BIXLER 1995/03/23	DRAFT WHERE APPLICABLE MUST REMAIN WITHIN DIMENSIONS	SEE TABLE	DOCUMENT NO. SDA-71439-2***
1 PLACE ± 0.25 ± ---	ANGULAR ± 1/2°	THIS DRAWING CONTAINS INFORMATION THAT IS PROPRIETARY TO MOLEX INCORPORATED AND SHOULD NOT BE USED WITHOUT WRITTEN PERMISSION				

STANDARD

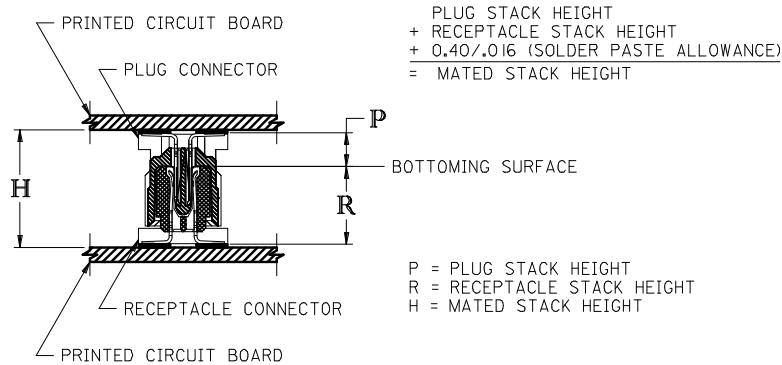
CIRCUIT SIZE	RECEPTACLE ASSY. ITEM NUMBER	PEGS	PICK & PLACE CAP	PACKAGING SPEC. NUMBER	PACKAGING TYPE
64	71439-2164	YES	NO	PK-70873-0601	TUBE
64	71439-2864	NO	YES	PK-70873-063	TAPE & REEL
64	71439-2564	NO	NO	PK-70873-0683	TUBE

SPECIAL

CIRCUIT SIZE	RECEPTACLE ASSY. ITEM NUMBER	PEGS	PICK & PLACE CAP	PACKAGING SPEC. NUMBER	PACKAGING TYPE
64	71439-2464	YES	YES	PK-70873-063	TAPE & REEL

RECOMMENDED PLUG/RECEPTACLE COMBINATION FOR MATED STACK HEIGHT PER EIA STANDARD 700 AAAB

MATED STACK HEIGHT	RECEPTACLE HEIGHT	RECEPTACLE SERIES NO.	PLUG HEIGHT	PLUG SERIES NO.
13.00/.512	8.30/.327	71439-2***	4.30/.169	71436-2***



CORRECT DESIGN UNITS EC NO: UCP2008-2484 DRWN:MS1BARRA 2008/04/22 CHKD:BBARKER 2008/05/06 APPR:SMILLER 2008/05/06	QUALITY SYMBOLS ▽=0 ▽=0	GENERAL TOLERANCES (UNLESS SPECIFIED) mm INCH	DIMENSION STYLE MM/IN	SCALE ---	DESIGN UNITS METRIC	THIRD ANGLE PROJECTION	
	4 PLACES ±--- ±--- 3 PLACES ±--- ±--- 2 PLACES ±--- ±--- 1 PLACE ±--- ±---	DRAWN BY REED	DATE 1995/03/23	TITLE ASSY, 1MM BOARD-TO-BOARD RECEPTACLE CONNECTOR 8.30/.327 HIGH			
	ANGULAR ±1/2°	CHECKED BY REED	DATE 1995/03/23	MOLEX INCORPORATED			
	DRAFT WHERE APPLICABLE MUST REMAIN WITHIN DIMENSIONS	APPROVED BY BIXLER	DATE 1995/03/23	MATERIAL NO. SEE TABLE	DOCUMENT NO. SDA-71439-2***	SHEET NO. 2 OF 2	
THIS DRAWING CONTAINS INFORMATION THAT IS PROPRIETARY TO MOLEX INCORPORATED AND SHOULD NOT BE USED WITHOUT WRITTEN PERMISSION							

Mouser Electronics

Authorized Distributor

Click to View Pricing, Inventory, Delivery & Lifecycle Information:

[Molex:](#)

[71439-2564](#)