

REVISION AC

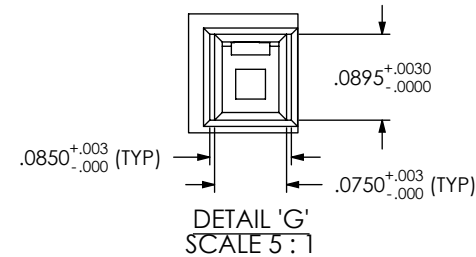
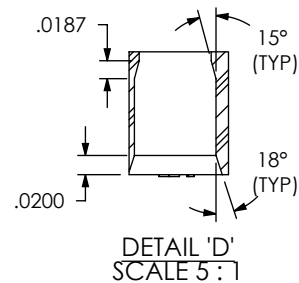
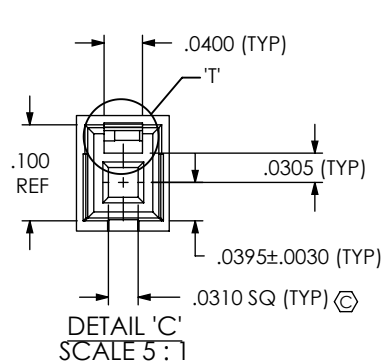
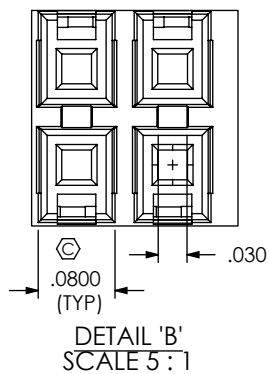
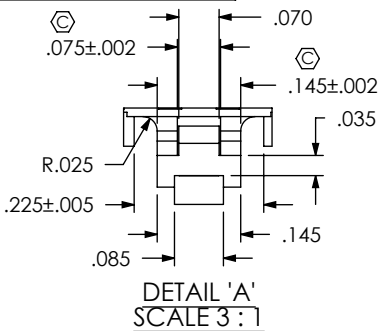


FIG 3
IPD1-06-D-P SHOWN
SAME AS FIG 1, EXCEPT AS SHOWN

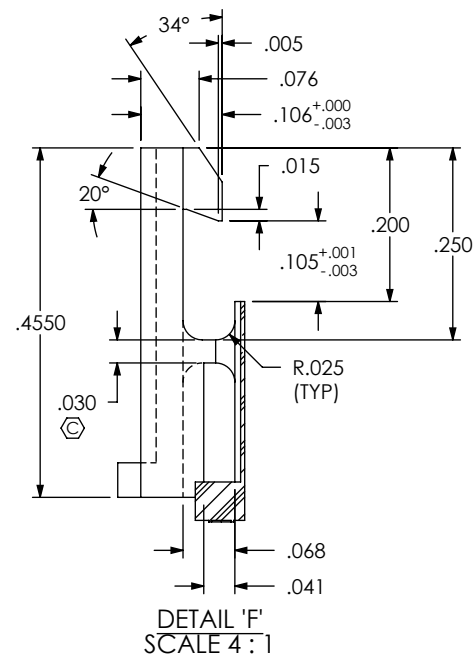
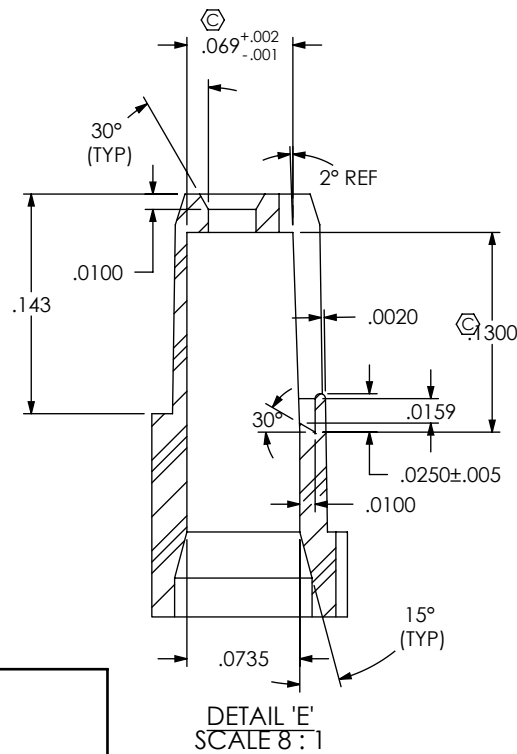
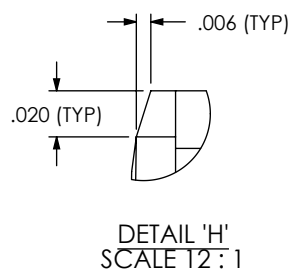
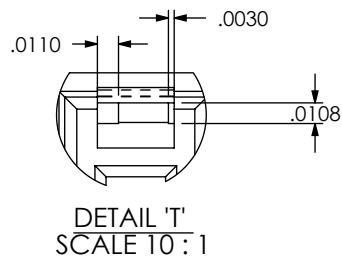
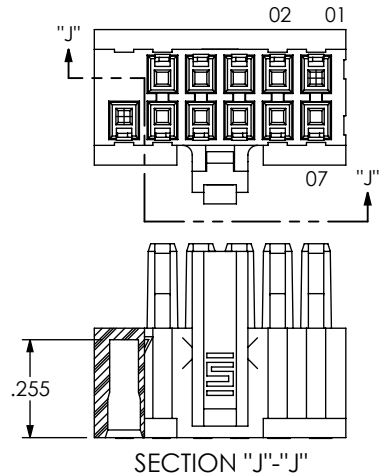


FIG 4
-K: KEYED POLARIZATION
IPD1-06-D-K SHOWN
SAME AS FIG 1, UNLESS OTHERWISE STATED

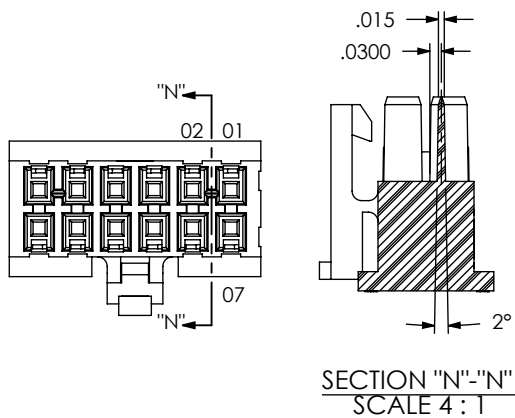
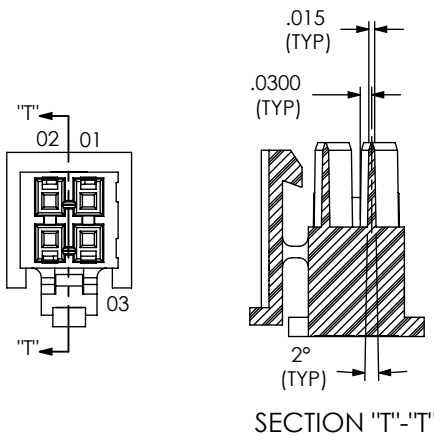


FIG 5
-K: KEYED POLARIZATION (2 POS)
IPD1-02-D-K SHOWN
SAME AS FIG 4, UNLESS OTHERWISE STATED



PROPRIETARY NOTE
THIS DOCUMENT CONTAINS INFORMATION
CONFIDENTIAL AND PROPRIETARY TO
SAMTEC, INC. AND SHALL NOT BE REPRODUCED
OR TRANSFERRED TO OTHER DOCUMENTS OR
DISCLOSED TO OTHERS OR USED FOR ANY
PURPOSE OTHER THAN THAT WHICH IT WAS
OBTAINED WITHOUT THE EXPRESSED WRITTEN
CONSENT OF SAMTEC, INC.

DO NOT SCALE DRAWING
SHEET SCALE: 2:1

F:\DWG\MISC\MKTG\IPD1-XX-D-XX-X-MKT.SLDDRW

samtec

520 PARK EAST BLVD, NEW ALBANY, IN 47150
PHONE: 812-944-6733 FAX: 812-948-5047
e-Mail: info@SAMTEC.com code 55322

DESCRIPTION: .100 SHROUDED CONTACT BODY

DWG. NO. IPD1-XX-D-XX-X

BY: CHAD F 03/05/2002 SHEET 2 OF 5

FIG 6
IPD1-06-D-R SHOWN
SAME AS FIG 1, UNLESS OTHERWISE STATED
(SEE NOTE 16)

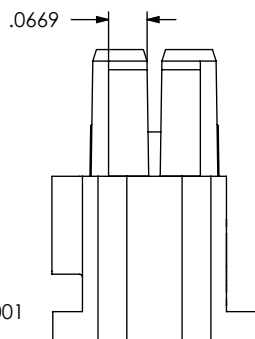
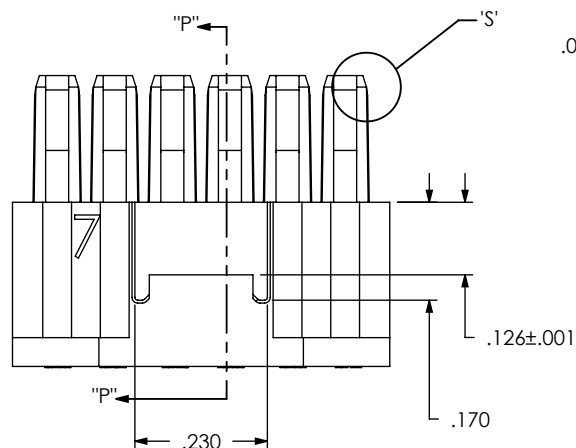
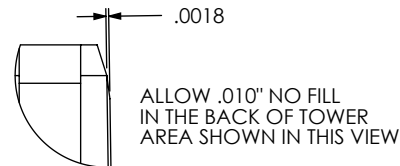
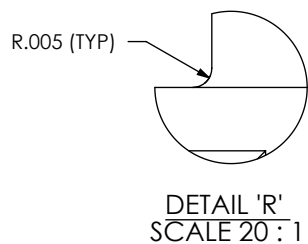
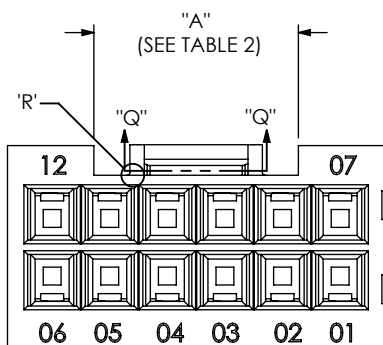
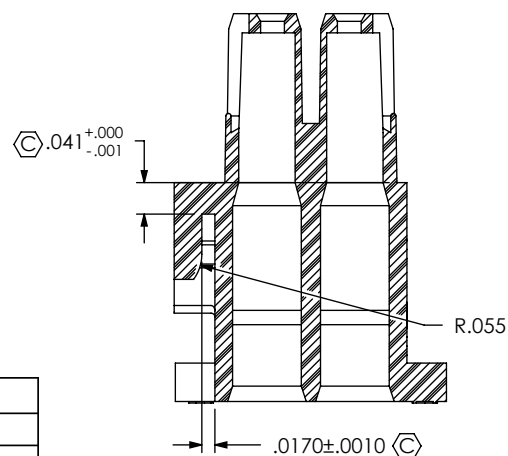


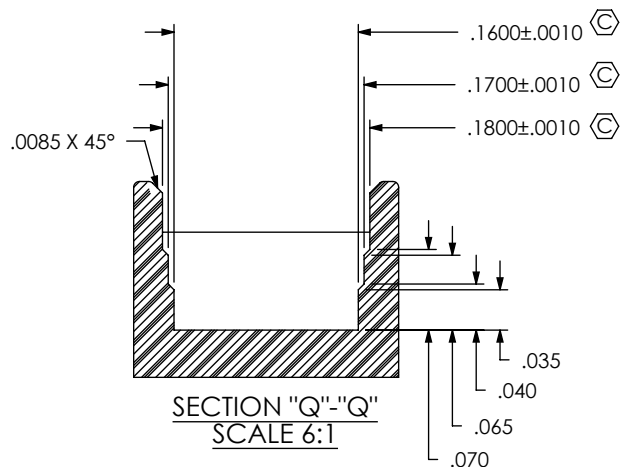
TABLE 2	
No OF POS	"A"
-02	.325
-04 THRU -25	.355



DETAIL 'S'
SCALE 8:1

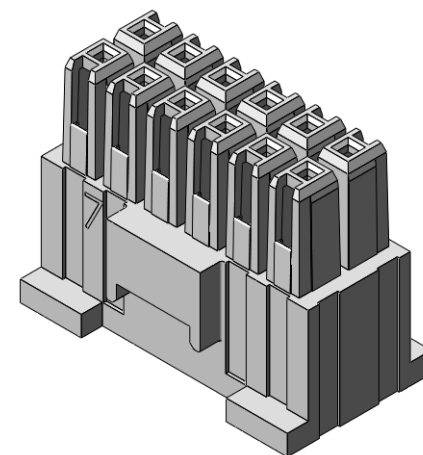
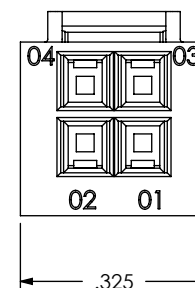
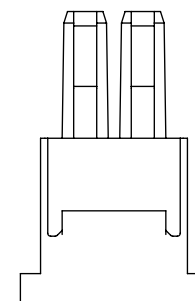


SECTION "P"-"P"
SCALE 6:1



SECTION "Q"-"Q"
SCALE 6:1

FIG 7
(IPD1-02-D-R SHOWN)
(SAME AS FIG. 5, UNLESS OTHERWISE STATED)
(SEE NOTE 16)



PROPRIETARY NOTE

THIS DOCUMENT CONTAINS INFORMATION
CONFIDENTIAL AND PROPRIETARY TO
SAMTEC, INC. AND SHALL NOT BE REPRODUCED
OR TRANSFERRED TO OTHER DOCUMENTS OR
DISCLOSED TO OTHERS OR USED FOR ANY
PURPOSE OTHER THAN THAT WHICH IT WAS
OBTAINED WITHOUT THE EXPRESSED WRITTEN
CONSENT OF SAMTEC, INC.

DO NOT SCALE DRAWING

SHEET SCALE: 3:1

samtec

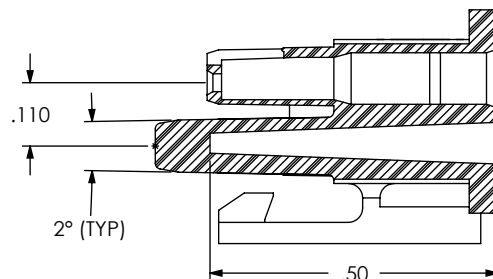
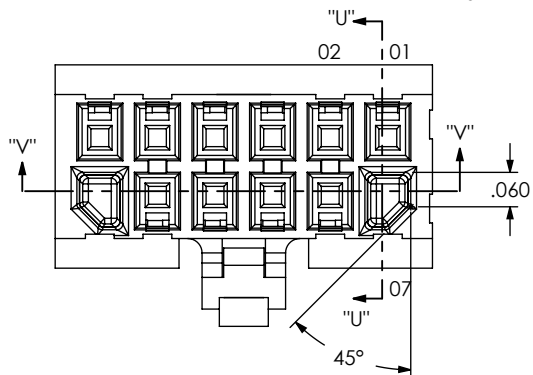
520 PARK EAST BLVD. NEW ALBANY, IN 47150
PHONE: 812-944-6733 FAX: 812-948-5047
e-Mail: info@SAMTEC.com code 55322

DESCRIPTION:
.100 SHROUDED CONTACT BODY

DWG. NO.
IPD1-XX-D-XX-X

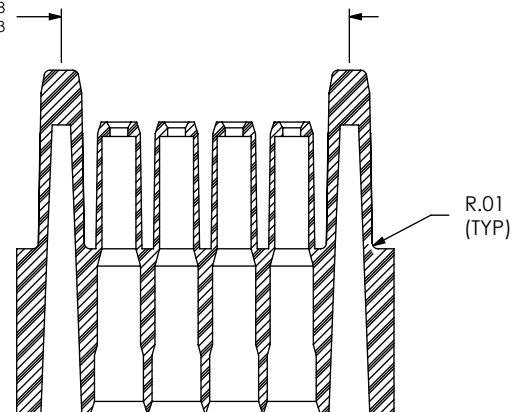
BY: CHAD F 03/05/2002 SHEET 3 OF 5

FIG 8
IPD1-06-D-GP SHOWN
SAME AS FIG 1, UNLESS OTHERWISE STATED

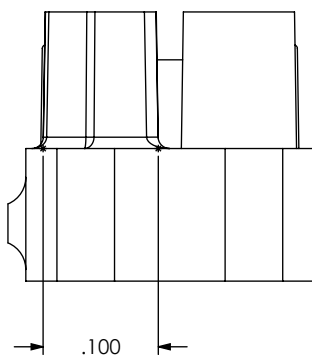
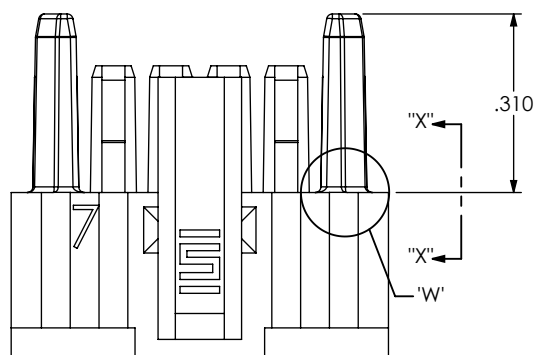


SECTION "U"-U"

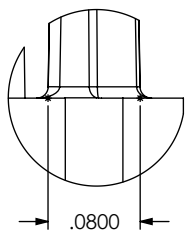
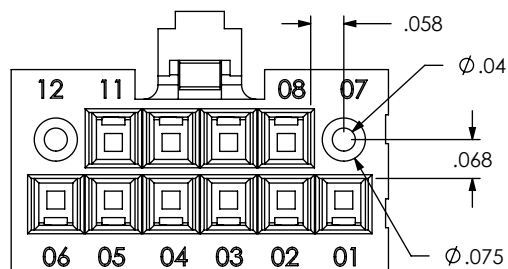
$$((\text{No OF POSITIONS} - 1) \times .100) \begin{matrix} +.008 \\ -.003 \end{matrix}$$



SECTION "V"-V"
SCALE 3:1



SECTION "X"-X"
SCALE 6:1



DETAIL 'W'
SCALE 6:1

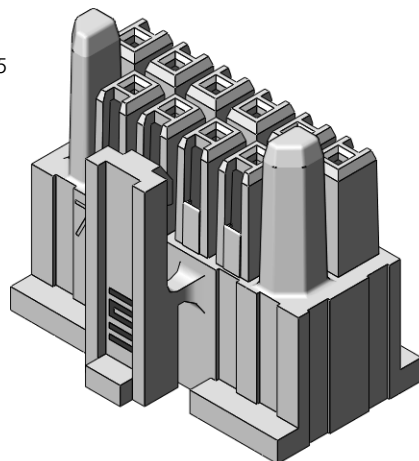


FIG 9
IPD1-06-D-GP-R SHOWN
REFER TO FIG 6 FOR -R AND FIG 8 FOR -GP

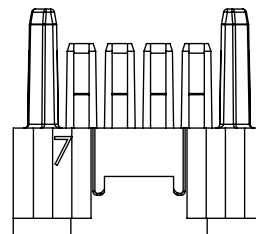
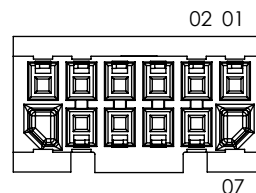
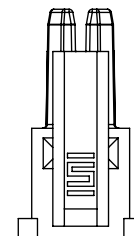
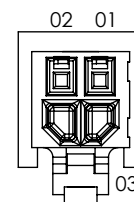


FIG 10
IPD1-02-D-GP SHOWN
SAME AS FIG 2, UNLESS OTHERWISE STATED
REFER TO FIG 8 FOR -GP



PROPRIETARY NOTE

THIS DOCUMENT CONTAINS INFORMATION
CONFIDENTIAL AND PROPRIETARY TO
SAMTEC, INC. AND SHALL NOT BE REPRODUCED OR
DISCLOSED TO OTHERS OR USED FOR ANY
PURPOSE OTHER THAN THAT WHICH IT WAS
OBTAINED WITHOUT THE EXPRESSED WRITTEN
CONSENT OF SAMTEC, INC.

DO NOT SCALE DRAWING

SHEET SCALE: 3:1

samtec

520 PARK EAST BLVD, NEW ALBANY, IN 47150
PHONE: 812-944-6733 FAX: 812-948-5047
e-Mail: info@SAMTEC.com code 55322

DESCRIPTION:
.100 SHROUDED CONTACT BODY

DWG. NO.
IPD1-XX-D-XX-X

BY: CHAD F 03/05/2002 SHEET 4 OF 5

FIG 11
IPD1-05-D-H SHOWN
SAME AS FIG 1, EXCEPT AS SHOWN

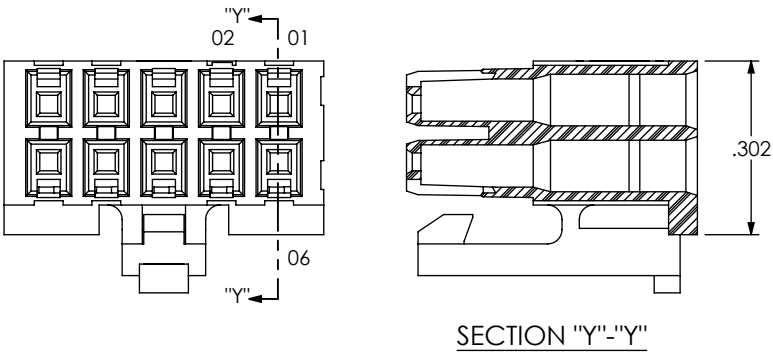
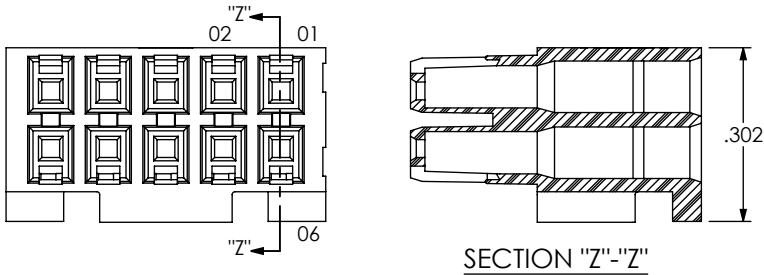


FIG 12
IPDT-05-D-H-R
SAME AS FIG 6, EXCEPT AS SHOWN



PROPRIETARY NOTE
THIS DOCUMENT CONTAINS INFORMATION
CONFIDENTIAL AND PROPRIETARY TO
SAMTEC, INC. AND SHALL NOT BE REPRODUCED
OR TRANSFERRED TO OTHER DOCUMENTS OR
DISCLOSED TO OTHERS OR USED FOR ANY
PURPOSE OTHER THAN THAT WHICH IT WAS
OBTAINED WITHOUT THE EXPRESSED WRITTEN
CONSENT OF SAMTEC, INC.

DO NOT SCALE DRAWING

SHEET SCALE: 3:1

samtec

520 PARK EAST BLVD, NEW ALBANY, IN 47150
PHONE: 812-944-6733 FAX: 812-948-5047
e-Mail info@SAMTEC.com code 55322

DESCRIPTION:
.100 SHROUDED CONTACT BODY

DWG. NO.
IPD1-XX-D-XX-X

BY: CHAD F 03/05/2002 SHEET 5 OF 5