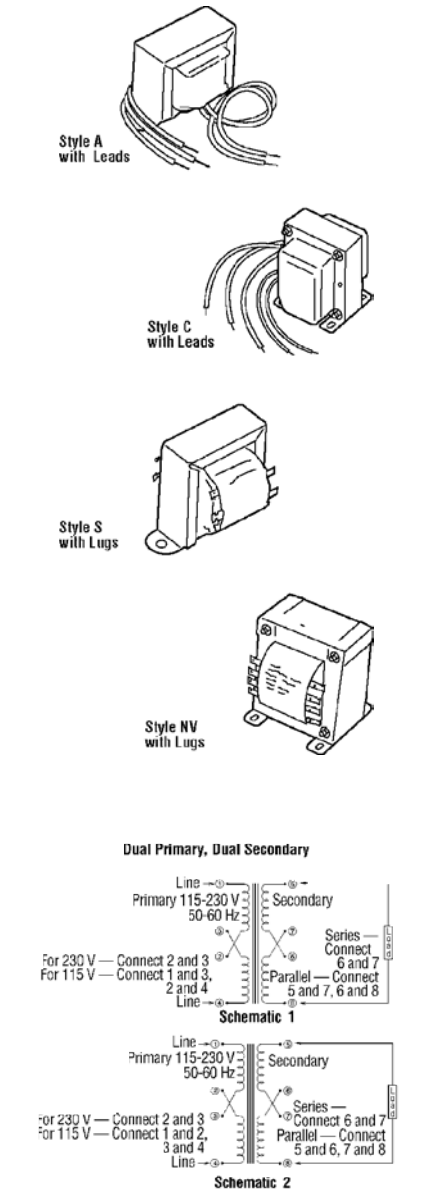


Visit Stancor's Website at [www.stancor.com](http://www.stancor.com)

Power Transformers



- ▶ Leadwire Terminations Standard for Most Items; Solder Lugs Available on Some Products
- ▶ Most Items May Be Operated at 400 Hz without Change in Output Rating
- ▶ Rated for Continuous Duty
- ▶ Designed Using Traditional EI Laminations for Stability
- ▶ Wide Variety of Mounting Configurations to Fit Virtually Any Design Requirement

Specifications. **Input Voltages:** 50/60 Hz; Other voltages available as custom designs. **Operating Temperature:** -40° to +105°C. Class A insulating materials. Designed to meet requirements of UL 506.

Single Secondary

Termination: Primary — leads; Secondary — leads.

Stock No.	Mir.'s Type	Primary		Secondary		Style	Insulation Test RMS (Volts)	Dimensions (Inches)				Weight (Lbs.)	Agency Certification*	EACH	
		Volts	Volts	Amps	Case			Mounting		1-49	50-99				
					H			D	MW					MD	
928-3027	P-6465	117	6.3 CT	0.600	A	1500	1.38	2.38	1.50	2.00	—	0.40	UL	6.68	6.22
928-4040	P-8389	117	6.3	1.000	A	1500	1.75	2.88	1.63	2.38	—	0.60	UL	12.34	11.51
928-3028	P-6466	117	6.3 CT	3.000	A	2500	2.00	3.25	2.13	2.81	—	1.40	—	11.15	10.39
928-4752	P-8652	117	10.0 CT	1.000	A	1500	2.00	3.25	2.00	2.81	—	0.90	—	11.91	11.10
928-8380	P-8380	117	10.0 CT	3.000	A	1500	2.25	3.75	2.25	3.13	—	1.60	—	21.79	20.31
928-4232	P-8655	117	10.0 CT	6.000	NV	1500	3.13	2.50	2.63	2.00	2.06	3.10	—	19.53	18.20
928-4045	P-8390	117	12.0	0.150	A	1500	1.25	2.13	1.25	1.75	—	0.25	UL	7.20	6.53
928-4047	P-8391	117	12.0	0.350	A	1500	1.38	2.38	1.38	2.00	—	0.35	—	7.42	6.92
928-4048	P-8392	117	12.0	0.700	A	1500	1.75	2.94	1.63	2.38	—	0.60	UL	7.54	7.03
928-4049	P-8393	117	12.0	1.200	A	1500	2.00	3.25	1.63	2.81	—	0.85	—	9.38	8.75
928-4757	P-8657	117	12.0	2.000	A	1500	2.00	3.25	2.13	2.81	—	1.30	—	11.30	10.54
928-4236	P-8658	117	12.0	4.000	A	1500	2.63	4.00	2.25	3.56	—	2.30	—	15.93	14.85
928-4238	P-8659	117	12.0	6.000	NV	1500	3.50	2.88	2.63	2.25	2.13	3.40	—	21.51	20.05
928-9960	P-8660	117	12.0	8.000	NV	1500	3.81	3.19	2.75	2.50	2.13	4.30	—	22.24	20.73
928-4034	P-8384	117	12.6 CT	1.000	A	1500	2.00	3.25	1.75	2.81	—	0.90	—	12.81	11.95
928-3040	P-8130	117	12.6 CT	2.000	A	1500	2.00	3.25	2.13	2.81	—	1.40	UL	10.90	10.17
928-8350	P-8358	117	12.6 CT	3.000	A	1500	2.38	3.75	2.25	3.13	—	1.60	—	19.16	17.86
928-4741	P-8641	117	12.6 CT	4.000	A	1500	2.62	4.00	2.38	3.56	—	2.30	—	17.51	16.32
928-4218	P-8644	117	12.6 CT	10.000	C	1500	4.25	3.44	3.38	2.75	2.69	6.30	—	40.10	37.38
928-7100	P-8553	115	14.0 CT	0.250	A	1500	1.38	2.38	1.44	2.00	—	0.40	—	7.81	7.28
928-4816	P-8691	115	18.0 CT	1.000	A	1500	2.00	3.31	2.13	2.81	—	1.50	—	10.37	9.66
928-4820	P-8693	115	18.0 CT	2.000	A	1500	2.38	3.75	2.25	3.13	—	2.00	—	12.16	11.33
928-7105	P-8504	115/230	20.0 CT	0.250	A	2500	1.44	2.38	1.38	2.00	—	0.40	—	10.39	9.68
928-4604	P-8604	117	20.0 CT	1.000	A	1500	2.00	3.25	2.13	2.81	—	1.40	UL	11.48	10.70
928-9570	P-8551	115	24.0	1.000	A	1500	2.00	3.25	2.13	2.81	—	1.40	—	8.27	7.71
928-4822	P-8694	115	24.0	2.000	A	1500	2.63	4.00	2.00	3.56	—	2.30	—	13.39	12.48
928-4050	P-8394	117	24.0 CT	0.085	A	1500	1.38	2.13	1.25	1.75	—	0.25	—	8.65	7.50
928-9575	P-8395	117	24.0 CT	0.200	A	1500	1.38	2.38	1.38	2.00	—	0.35	UL	7.94	7.40
928-7110	P-8721	230	24.0 CT	0.200	A	1500	1.38	2.38	1.38	2.00	—	0.35	—	10.33	9.63
928-4200	P-8578	115/230	24.0 CT	0.200	A	1500	1.38	2.38	1.50	2.00	—	0.30	—	10.14	9.46
928-4052	P-8396	117	24.0 CT	0.400	A	1500	1.75	2.88	1.63	2.38	—	0.60	UL	8.94	8.33
928-4836	P-8722	230	24.0 CT	0.400	A	1500	1.75	2.88	1.63	2.38	—	0.60	—	13.56	12.64
928-4053	P-8397	117	24.0 CT	0.700	A	1500	2.00	3.25	1.75	2.81	—	0.85	UL	9.40	8.77
928-4861	P-8661	117	24.0 CT	1.000	A	1500	2.00	3.25	2.06	2.81	—	1.40	—	10.04	9.36
928-4862	P-8662	117	24.0 CT	2.000	A	1500	2.62	4.00	2.38	3.56	—	2.30	—	14.65	13.66
928-4863	P-8663	117	24.0 CT	4.000	NV	1500	3.81	3.13	2.81	2.13	2.13	4.00	UL	41.00	22.20
928-9970	P-8664	117	24.0 CT	6.000	NV	1500	4.19	3.44	3.00	2.75	2.25	5.70	—	32.38	30.19
928-4865	P-8665	117	24.0 CT	8.000	NV	1500	4.19	3.44	3.38	2.75	2.75	7.30	—	36.35	33.88
928-4824	P-8695	115	24.0 CT	10.000	NV	1500	4.31	3.44	3.50	2.75	3.13	8.00	—	76.95	71.73
928-3031	P-6469	117	25.2	1.000	A	1500	2.00	3.25	2.13	2.81	—	1.40	—	11.09	10.34
928-3080	P-8180	117	25.2 CT	1.000	A	1500	2.00	3.25	2.25	2.81	—	1.40	—	10.50	9.79
928-4016	P-8357	117	25.2 CT	2.000	A	1500	2.63	4.00	2.25	3.56	—	2.20	UL	18.29	17.05
928-9115	P-8574	115/230	25.2 CT	2.000	A	1500	2.63	4.00	2.25	3.56	—	2.20	UL	14.73	13.73
928-4038	P-8368	117	25.2 CT	2.800	A	1500	2.63	4.00	2.25	3.56	—	2.20	—	22.27	20.76
928-9609	P-8609	117	26.8 CT	1.000	A	1500	2.00	3.25	2.13	2.81	—	1.30	—	10.40	9.70
928-4206	P-8603	117	28.0 CT	0.800	A	1500	2.00	3.25	2.13	2.81	—	1.00	UL	10.50	9.79
928-4867	P-8667	117	28.0 CT	1.000	A	1500	2.00	3.25	2.13	2.81	—	1.40	—	12.60	11.75
928-9989	P-8669	117	28.0 CT	4.000	NV	1500	3.81	3.19	3.25	2.50	2.50	5.30	—	26.32	24.53
928-4802	P-8670	117	28.0 CT	6.000	NV	1500	4.25	3.44	3.50	2.75	2.63	7.00	—	33.29	31.03
928-4111	P-8611	117	36.0 CT	0.135	A	1500	1.38	2.38	1.38	2.00	—	0.35	—	9.42	8.78
928-4112	P-8612	117	36.0 CT	0.300	A	1500	1.75	2.88	1.63	2.38	—	0.60	—	9.63	8.97
928-4212	P-8613	117	36.0 CT	0.550	A	1500	2.00	3.25	1.88	2.81	—	1.00	—	11.18	10.42
928-4671	P-8671	117	36.0 CT	1.000	A	1500	2.38	3.75	2.25	3.13	—	2.00	—	14.77	13.77
928-9990	P-8672	117	36.0 CT	2.000	NV	1500	3.44	2.81	2.75	2.25	2.13	3.50	—	19.95	18.60
928-4804	P-8673	117	36.0 CT	4.000	NV	1500	4.19	3.50	2.88	2.75	2.38	6.00	—	31.82	29.67
928-4208	P-8605†	117	48.0 CT	1.000	A	2500	2.63	4.00	2.38	3.56	—	2.30	—	21.23	19.79

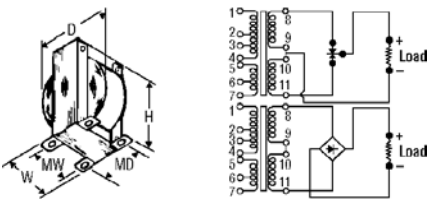
\*Agency Certification Note: UL Recognized (File E68100, Guide #YPTQ2) UL Class 1. †Primary tapped to provide secondary voltages of 45 CT, 48 CT, 51 CT or 54 CT.

Dual Primary, Dual Secondary

Primaries 115/230 volts 50/60 Hz — solder lug termination. Agency Certification: UL Recognized (File E68100, Guide #YPTQ2) UL Class 1.

Stock No.	Mfr.'s Type	Style	Schematic	VA Cap.	Output from Two Secondary Windings			Dimensions (Inches)					Weight (Lbs.)	EACH	
					Individually	Parallel	Series	Case		Mounting				1-49	50-99
								H	W	D	MW	MD			
928-3000	P-6375	S	1	12	6 V @ 1.00 A	6 V @ 2.0 A	12 V @ 1.00 A	2.38	2.88	1.63	2.38	—	1.0	9.74	9.08
928-3001	P-6376	S	1	24	6 V @ 2.00 A	6 V @ 4.0 A	12 V @ 2.00 A	2.75	3.13	1.88	2.81	—	1.5	15.07	14.04
928-3002	P-6377	S	2	48	12 V @ 2.00 A	12 V @ 4.0 A	24 V @ 2.00 A	3.13	3.63	2.25	3.13	—	2.5	16.29	15.18
928-3003	P-6378	NV	2	96	12 V @ 4.00 A	12 V @ 8.0 A	24 V @ 4.00 A	3.50	2.81	3.06	2.25	2.31	4.2	27.73	25.85
928-3004	P-6379	NV	2	192	12 V @ 8.00 A	12 V @ 16.0 A	24 V @ 8.00 A	4.25	3.44	3.62	2.75	3.13	8.0	66.56	63.91
928-4615	P-8615	S	1	12	24 V @ 0.25 A	24 V @ 0.5 A	48 V @ 0.25 A	2.38	2.88	1.63	2.38	—	1.0	13.32	12.41
928-4616	P-8616	S	1	24	24 V @ 0.50 A	24 V @ 1.0 A	48 V @ 0.50 A	2.75	3.13	1.88	2.81	—	1.5	13.30	12.40
928-4617	P-8617	S	2	48	24 V @ 1.00 A	24 V @ 2.0 A	48 V @ 1.00 A	3.13	3.63	2.25	3.13	—	2.5	14.84	13.83
928-4618	P-8618	NV	2	96	24 V @ 2.00 A	24 V @ 4.0 A	48 V @ 2.00 A	3.50	2.81	3.06	2.25	2.31	4.2	25.81	24.06
928-4619	P-8619	NV	2	192	24 V @ 4.00 A	24 V @ 8.0 A	48 V @ 4.00 A	4.25	3.44	3.62	2.75	3.13	8.0	38.80	35.57

Universal Rectifier Transformers



Primaries 117 volts 50/60 Hz. May also be satisfactorily operated at 400 cycles. Solder lug termination, rectifiers not included.

Stock No.	Mfr.'s Type	Rectifier Circuit	Range of Applied AC Volts Under Load (Approx.)	Output Resistive or Inductive Load Max. DC		Output Capacitive Load* Max. DC		Case Dimensions
-----------	-------------	-------------------	--	--	--	---------------------------------	--	-----------------