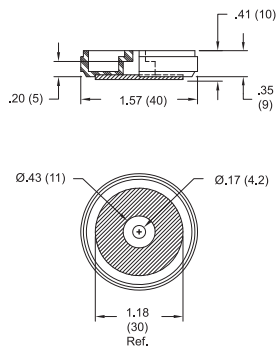
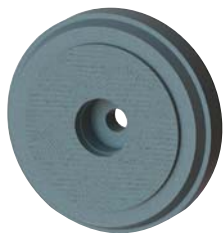
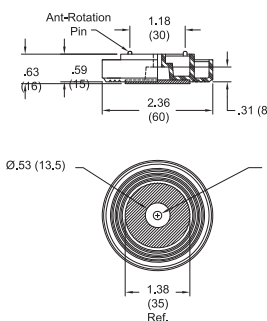
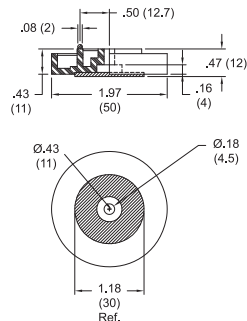
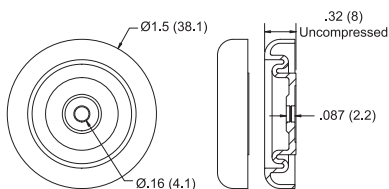


**BF**
Big Screw Mount Foot**BF-1001**

- Ideal for heavy duty applications
- Mounted securely with a #8 (M4) pan head screw
- Nylon fiber pad material helps prevent abrasion
- Foot Material: UL94 HB ABS
- Pad Material: Nylon Fiber
- Color: Black

**BF-1002****BF-1005**

Item No.	Load Capacity	Pack Qty.	Bulk Pack Qty.
BF-1001	22 lbs. (10 kg.)	1	100
BF-1002	22 lbs. (10 kg.)	1	100
BF-1005	22 lbs. (10 kg.)	1	100

SVF
Shock & Vibration Dampening Foot

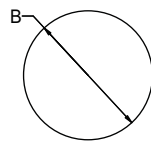
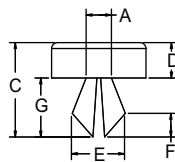
- Mounted with a #6 or #8 (M4) screw or an SR-40XX rivet (See page 731)
- Provides excellent shock and vibration control
- SVF-1 Material: UL94 HB TPE 75 Shore A
- SVF-2 Material: UL94 HB TPE 64 Shore A
- Color: Black

Item No.	Item No.	Pack Qty.	Bulk Pack Qty.
SVF-1	SVF-2	1	400

BSS Series
Flat Head Split Stem Bumpers

- Specifications:
- Material: Nylon
 - Color: Natural

- Features:
- Produced with a split stem portion and undercut to make insertion easy and removal difficult. Used as panel plugs and bumpers

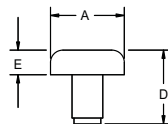
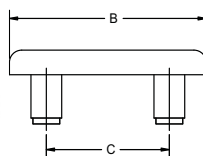


Item No.	To Fit Hole In	To Fit Hole mm	A In	A mm	B In	B mm	C In	C mm	D In	D mm	E In	E mm	F In	F mm	G In	G mm	Pack Qty.	Bulk Pack Qty.
BSS010A	0.156	3.96	0.152	3.86	0.500	12.70	0.312	7.92	0.063	1.60	0.166	4.22	0.063	1.60	0.187	4.75	1	14000
BSS015A	0.265	6.73	0.260	6.60	0.750	19.00	0.625	15.88	0.187	4.75	0.290	7.37	0.125	3.18	0.312	7.92	1	10500

BDS Series
Double Stem Bumpers

- Specifications:
- Natural Nylon

- Features:
- Designed for applications requiring a bumper with a large head area



Item No.	To Fit Hole In	To Fit Hole mm	A In	A mm	B In	B mm	C In	C mm	D In	D mm	E In	E mm	Pack Qty.	Bulk Pack Qty.
BDS010A	0.187	4.75	0.375	9.53	1.000	25.40	0.625	15.88	0.500	12.70	0.125	3.18	1	3500