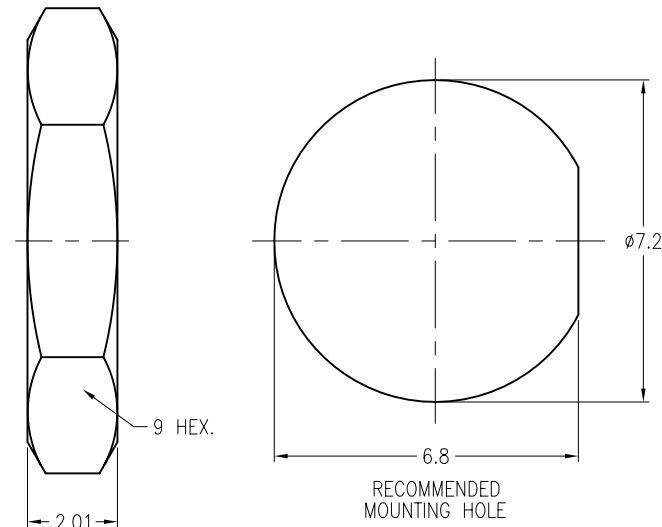
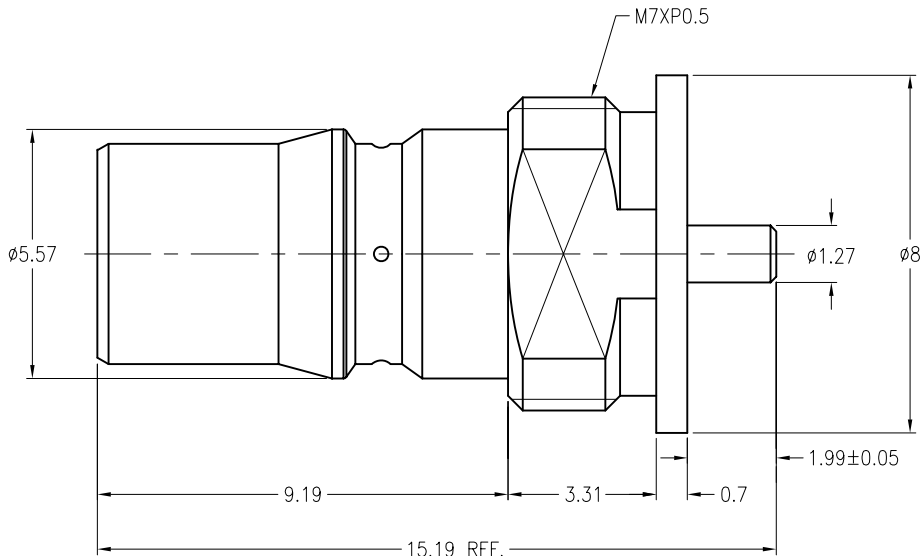


NOTES: 1. MATERIALS AND FINISHES(PLATING THICKNESS IN MICRO-INCHES): BODY – BRASS, ALBALOY PLATING CONTACT – BERYLLIUM COPPER, GOLD PLATING INSULATOR – PTFE, NATURAL 2. ELECTRICAL: A. IMPEDANCE: 50 OHM B. FREQUENCY RANGE: DC 0–6 GHz C. DIELECTRIC WITHSTANDING VOLTAGE: 1000 VRMS, MIN. 3. MECHANICAL: A. DURABILITY: 500 CYCLES MIN. B. TEMPERATURE RANGE: –65°C to +165°C	THIRD ANGLE PROJ.		REVISIONS			
	REV	DESCRIPTION		DATE	ECO	APPR
	B	SEE SHEET 1		10–Nov–06		JEKY
	C	SEE SHEET 1		31–Dec–07		KATE
	D	SEE SHEET 1		31–Aug–09		SCOTT.H



CUSTOMER OUTLINE DRAWING
ALL OTHER SHEETS ARE FOR INTERNAL USE ONLY

UNLESS OTHERWISE SPECIFIED, DIMENSIONS ARE IN METRIC AND TOLERANCES ARE: 0.5 – 6mm 6 – 30mm 30 – 120mm ANGLES ±0.1mm ±0.2mm ± 0.3mm ±1°	MATERIAL		DRAWN		DATE		TITLE QMA JACK BULKHEAD		Amphenol RF Danbury CT USA, Tainan Taiwan, Shenzhen China www.amphenolrf.com		
			S.XIE		08–20–09’						
			ENGINEER		DATE						
	REFERENCE			CISSY		31–Dec–07		SCALE: 6/1		SHEET 2 OF 2	
				APPROVED		DATE					
NOTICE – These drawings, specifications, or other data (1) are, and remain the property of Amphenol Corp. (2) must be returned upon request; and (3) are confidential and not to be disclosed to any person other than those to whom they are given by Amphenol Corp. The furnishing of these drawings, specifications, or other data by Amphenol Corp., or to any other person to anyone for any purpose is not to be regarded by implication or otherwise in any manner licensing, granting rights or permitting such holder or any other person to manufacture, use or sell any product, process or design, patented or otherwise, that may in any way be related to or disclosed by said drawings, specifications, or other data.			SCOTT		08–20–09’				ITEM NO. 930–126J–51S		
	FINISH		F:\DWG\CNPD\930\126J\51S–DSZ				DWG SIZE B		CODE ID 74868		
									REV D		PART NO. 930–126J–51S

Mouser Electronics

Authorized Distributor

Click to View Pricing, Inventory, Delivery & Lifecycle Information:

[Amphenol:](#)

[930-126J-51S](#)