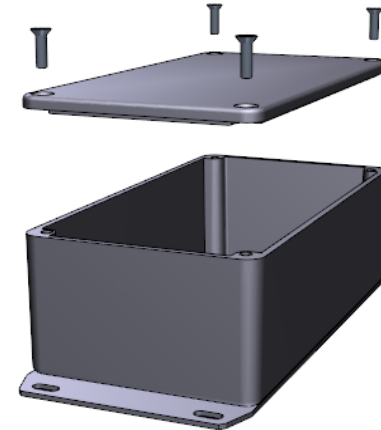
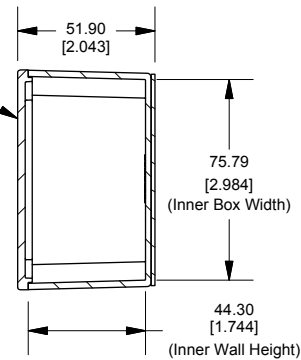
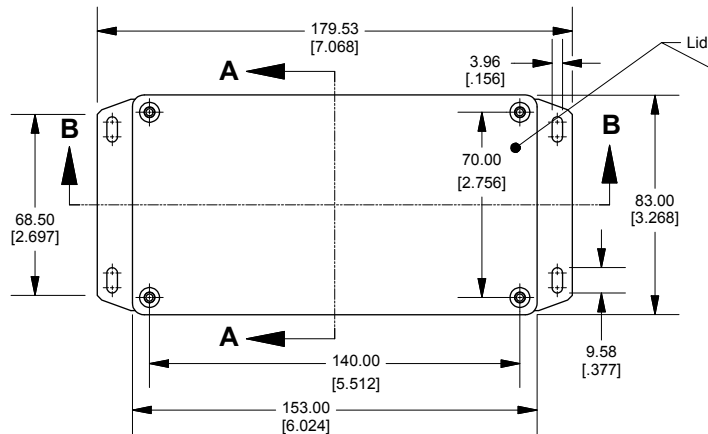


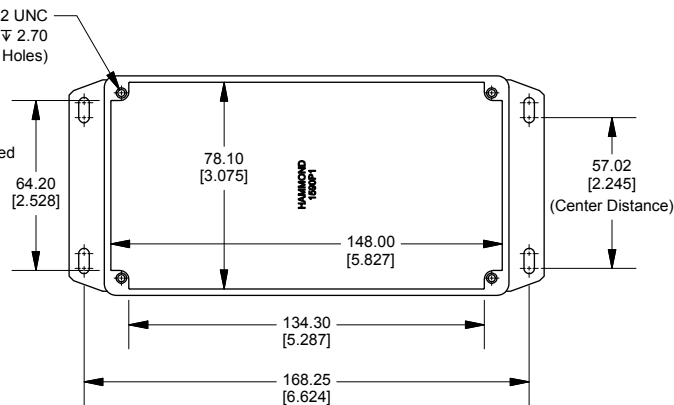
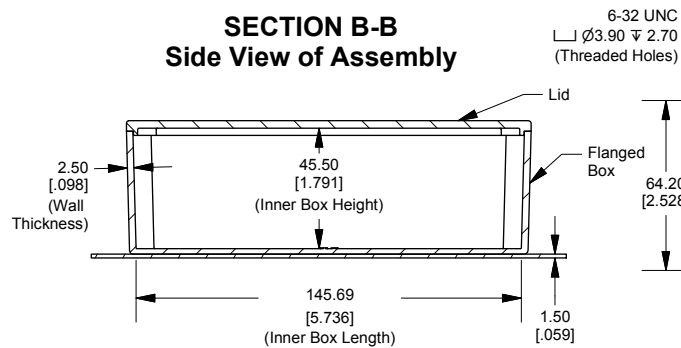
# Top View of Assembly

# SECTION A-A End View of Assembly

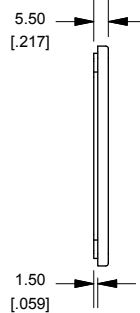
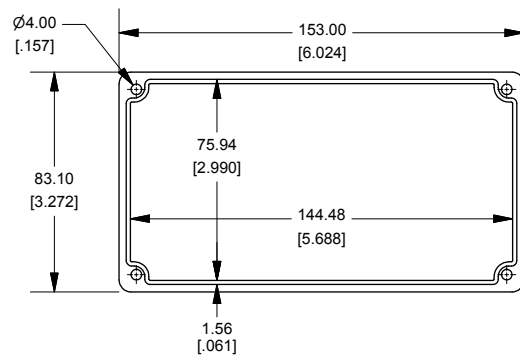


# Top View Looking Inside Box

# SECTION B-B Side View of Assembly



# Lid



Enclosures can be Factory Modified ( Milling, Drilling, Printing etc.)  
Contact Factory [mjm@hammondmg.com](mailto:mjm@hammondmg.com) for quotes  
Solid models of this enclosure available in STEP or IGES.

# NOTE

Purchased assembly includes box, lid and 4 cover screws.  
Box and lid are made from Diecast Aluminum Alloy.  
Silicone Gasket supplied with liquid resistant enclosure.  
Bottom Flange is Welded.

# PART NUMBERS

# 1590P1F Enclosure

Natural Finish Enclosure	1590P1F
Black Textured Enclosure	1590P1FBK

# 1590P1F Liquid Resistant Enclosure (Silicone Gasket)

Natural Finish Enclosure	1590WP1F
Black Textured Enclosure	1590WP1FBK

# ACCESSORIES

Recommended Torque: 75 ozf.in / 55 cN.m	
---	--

# Liquid Resistant Cover Screws

Stainless Steel Cover Screws (Pkg 100)	
--	--

[6-32 x 1/2" With O-Ring]	1590WMS100
---------------------------	------------

Black Stainless Steel Cover Screws (Pkg 100)	1590WMS100BK
--	--------------

[6-32 x 1/2" With O-Ring]	
---------------------------	--

# Standard Cover Screws

Plated Cover Screws (Pkg 100)	1590MS100
-------------------------------	-----------

[6-32 x 1/2"]	
---------------	--

Black Cover Screws (Pkg 100)	1590MS100BK
------------------------------	-------------

[6-32 x 1/2"]	
---------------	--

Dimensions:  
mm  
[inches]

