



VB125ASP

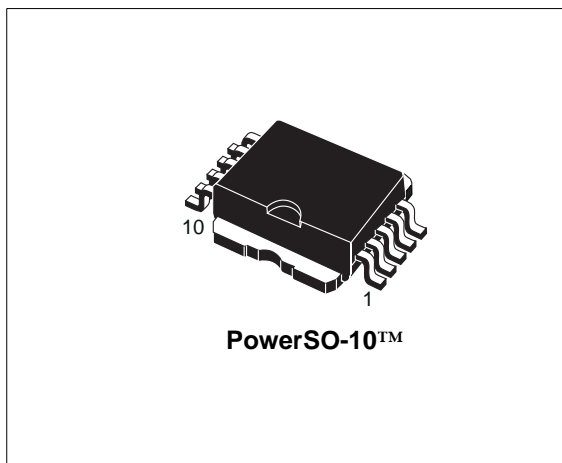
HIGH VOLTAGE IGNITION COIL DRIVER POWER I.C.

TYPE	V _{cl}	I _{cl}	I _{CC}
VB125ASP	340V	11.1A	200mA

- PRIMARY COIL VOLTAGE INTERNALLY SET
- COIL CURRENT LIMIT INTERNALLY SET
- LOGIC LEVEL COMPATIBLE INPUT
- BATTERY OPERATION
- SINGLE FLAG-ON COIL CURRENT
- TEMPERATURE COMPENSATED HIGH VOLTAGE CLAMP

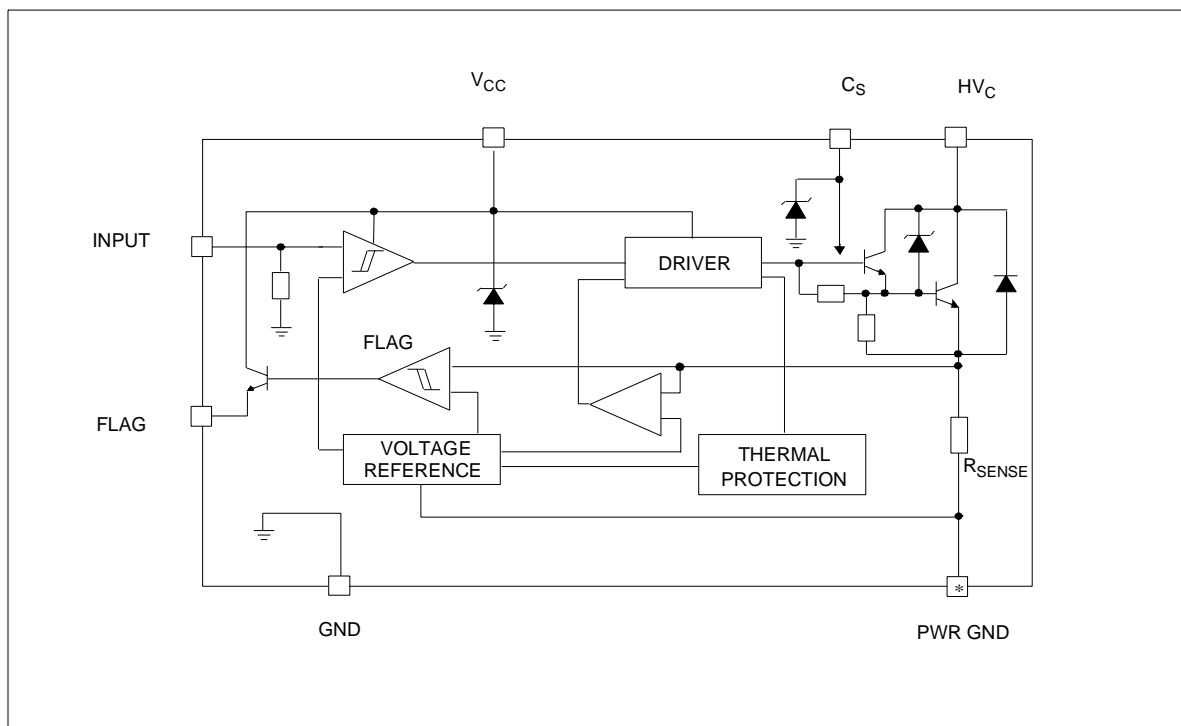
DESCRIPTION

The VB125ASP is a high voltage power integrated circuit made using the STMicroelectronics VIPower™ M1-2 technology, with vertical current flow power darlington and logic level compatible driving circuit. The VB125ASP can be directly biased by using the 12V battery voltage, thus avoiding to use a low voltage regulator. It has



built-in protection circuit for coil current limiting and collector voltage clamping. It is suitable as smart, high voltage, high current interface in advanced electronic ignition system.

BLOCK DIAGRAM



(*) Pins 1...5

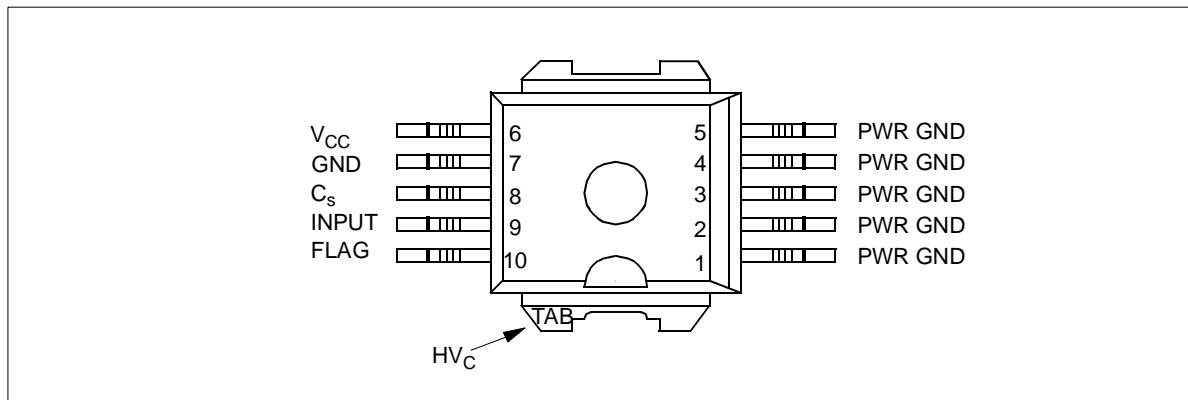
ABSOLUTE MAXIMUM RATING

Symbol	Parameter	Value	Unit
HV_C	Collector voltage (Internally limited)	-0.3 to V_{cl}	V
I_C	Collector current (Internally limited)	11.1	A
V_{CC}	Driving stage supply voltage	-0.2 to 40	V
I_{CC}	Driving circuitry supply current	400	mA
I_S	Logic circuitry supply current	100	mA
V_{IN}	Input voltage	-0.3 to 6	V
P_{tot}	Power dissipation at $T_C \leq 25^\circ C$	100	W
V_{ESD}	ESD Voltage (HV_C pin)	-4 to 4	KV
V_{ESD}	ESD Voltage (other pin)	-2 to 2	KV
T_j	Junction operating temperature	-40 to 150	$^\circ C$
T_{stg}	Storage temperature Range	-55 to 150	$^\circ C$

THERMAL DATA

Symbol	Parameter	Value	Unit
$R_{thj-case}$	Thermal resistance junction-case (MAX)	1.2	$^\circ C/W$
$R_{thj-amb}$	Thermal resistance junction-ambient (MAX)	62.5	$^\circ C/W$

CONNECTION DIAGRAM (TOP VIEW)



PIN FUNCTION

No	Name	Function
1÷5	PWR GND	Emitter power ground
6	V_{CC}	Logic supply voltage
7	GND	Control ground (*)
8	C_s	Logic level supply voltage filter capacitor
9	INPUT	Logic input channel
10	FLAG	Diagnostic output signal
TAB	HV_C	Primary coil output driver

(*) Pin 7 must be connected to pins 1÷5 externally.

ELECTRICAL CHARACTERISTICS ($V_{CC}=6$ to $24V$; $-40^{\circ}C < T_j < 125^{\circ}C$; $R_{coil}=400$ to $700m\Omega$; $L_{coil}=2$ to $6mH$ unless otherwise specified; see note 1)

Symbol	Parameter	Test Conditions	Min	Typ	Max	Unit
V_{cl}	High voltage clamp	$I_C=7A$; (See note 2)	340	370	400	V
		$I_C=2A$; (Switching off from 7A)	300		400	V
$V_{cg(sat)}$	Power stage saturation voltage	$I_C=6A$; $V_{CC}=14V$; $V_{IN}=4V$			2	V
		$I_C=7A$; $V_{CC}=14V$; $V_{IN}=4V$ (See note 3)			3	V
$I_{CC(off)}$	Power-off supply current	$V_{IN}=0.4V$; $V_{CC}=14V$			20	mA
		$V_{IN}=0.4V$; $V_{CC}=24V$ (See note 4;5)			80	mA
$I_{CC(on)}$	Power-on supply current	$V_{IN}=4V$; $V_{CC}=14V$; $I_C=4A$			200	mA
		$V_{IN}=4V$; $V_{CC}=24V$; $I_C=4A$ (See note 4; 5)			300	mA
I_{cl}	Collector current limit	$V_{IN}=4V$; $10V < V_{CC} < 19V$ (See note 6; 7)	8.8		11.1	A
V_{INH}	High level input voltage		4			V
V_{INL}	Low level input voltage				0.8	V
$V_{IN(hyst)}$	Hysteresis input voltage		0.4			V
I_{INH}	High level input current	$V_{IN}=4V$	10		150	μA
I_{INL}	Low level input current	$V_{IN}=0.8V$	0		30	μA
V_{diagH}	High level diagnostic output voltage	$R_{EXT}=22K\Omega$; $C_{EXT}=1nF$ (See note 8)	3.5		5.5	V
V_{diagL}	Low level diagnostic output voltage	$R_{EXT}=22K\Omega$; $C_{EXT}=1nF$ (See note 8)			0.5	V
$I_{C(diag)}$	Threshold level collector current	$T_j=-40^{\circ}C$; $10V < V_{CC} < 19V$	5.45		6.8	A
		$T_j=25^{\circ}C$; $10V < V_{CC} < 19V$	5.55		6.35	A
		$T_j=125^{\circ}C$; $10V < V_{CC} < 19V$ (See note 7; 9 and fig. 5)	5.5		6.35	A
$I_{C(diag)}$	Threshold level collector current	$T_j=-40^{\circ}C$; $V_{CC}=7V$	5.9		6.6	A
		$T_j=25^{\circ}C$; $V_{CC}=7V$	5.7		6.3	A
		$T_j=125^{\circ}C$; $V_{CC}=7V$ (See note 7; 9 and fig. 5)	5.5		6.3	A
I_{diag}	High level flag output current	$I_C > I_{C(diag)}$ (See note 7)	0.5			mA
$I_{diag(leak)}$	Leakage current on flag output	$V_{IN}=LOW$			10	μA
V_f	Diode forward voltage	$I_f=10A$			3.5	V
$E_{s/b}$	Single pulse avalanche energy		300			mJ
T_j	Thermal output current control	$IN=ON$ (See note 10)	150			$^{\circ}C$
$t_{d(on)}$	Turn-on delay time of output current	(See note 11)		1		μs
$t_{d(off)}$	Turn-off delay time of output current	(See note 12)	7		60	μs

VB125ASP

NOTE 1: Only functionality is guaranteed with $6V < V_{CC} < 10V$ and $V_{CC} > 24V$ and not parameter values.

NOTE 2: In the high voltage clamping structure of this device a temperature compensation has been implemented. The circuit schematic is shown in fig. 1. The KVbe cell takes care of the temperature compensation. The whole electrical characteristic of the new circuit is shown in fig. 2. Up to $V_{CE} = nV_Z$ no current will flow into the collector (just the leakage current of the power stage); for $nV_Z < V_{CE} < V_{CL}$ a current begins to flow across the resistances of the KVbe compensation circuit (typical slope $\approx 20 \text{ K}\Omega$) as soon as the V_{CL} reached the dynamic resistance drop to $\sim 4\Omega$ to protect the device against overvoltage (See figure 3).

NOTE 3: The saturation voltage of the Power stage includes the drop on the sensing resistor.

NOTE 4: Considering the different ways of operation of the device (with or without spark, etc...) there are some short periods of time in which the output terminal (HV_C) is pulled below ground by a negative current due to leakage inductances and stray capacitances of the ignition coil. With VIPower devices, if no corrective action is taken, these negative currents can cause parasitic glitches on the diagnostic output. To kill this potential problem, a circuit that avoids the possibility for the HV_C to be pulled underground, by sending the required negative current from the battery is implemented in the VB125ASP. For this reason there are some short periods in which a current exceeding 220 mA flows in the V_{CC} pin.

NOTE 5: A zener protection of 16V (typical) is placed on the supply pin (V_{CC}) of the chip to protect the internal circuitry. For this reason, when the battery voltage exceeds that value, the current flowing into V_{CC} pin can be greater than the maximum current specified at $V_{CC} = 14V$ (both in power on and power off conditions): it will be limited by an internal resistor.

NOTE 6: The primary coil current value I_{cl} must be measured 1 ms after desaturation of the power stage.

NOTE 7: These limits apply with regard to the minimum battery voltage and resistive drop on the coil and cables that permit to reach the limitation or diagnostic level.

NOTE 8: No internal Pull-Down.

NOTE 9: When I_C gets over $I_{C(diag)}$, the diagnostic output voltage rises to the high level and so it remains until the end of the input signal.

NOTE 10: $T_{jmin} = 150^\circ\text{C}$ means that the behavior of the device will not be affected for junction temperature lower than 150°C . For higher temperature, the thermal protection circuit will begin its action reducing the I_{cl} limit according with the power dissipation. Chip temperature is a function of the R_{th} of the whole system in which the device will be operating (See Fig.4).

NOTE 11: Turn on delay time measured from 90% of input voltage rising edge to 10% of output voltage falling edge.

NOTE 12: Turn off delay time is defined as the time between the 90% of input pulse falling edge and the point where the HV_C reaches 200V.

FIGURE 1: Temperature compensated high voltage clamp

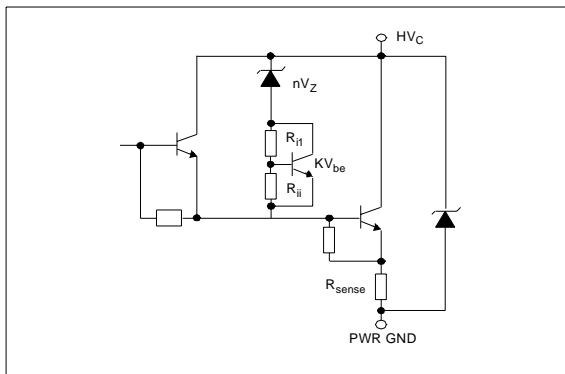


FIGURE 2: Electrical characteristic of the circuit shown in Figure 1.

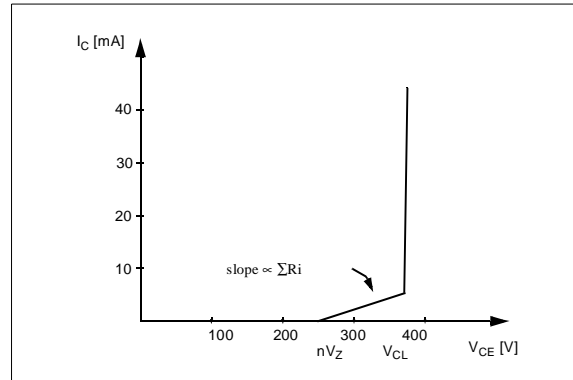
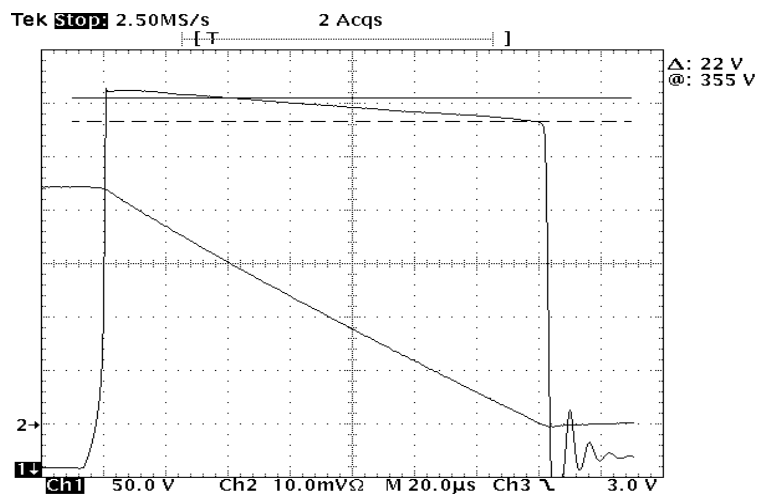
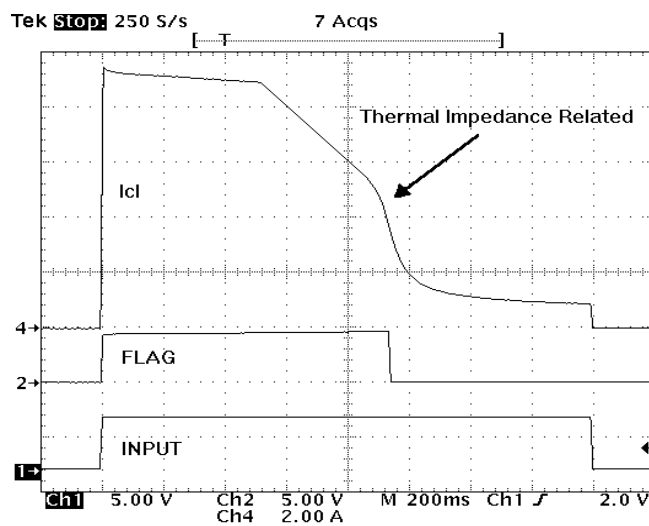


FIGURE 3: V_{cl} with load $L \approx 4\text{mH}$ **FIGURE 4:** Output Current Waveform after Thermal Protection Activation.

VB125ASP

FIGURE 5: Waveforms

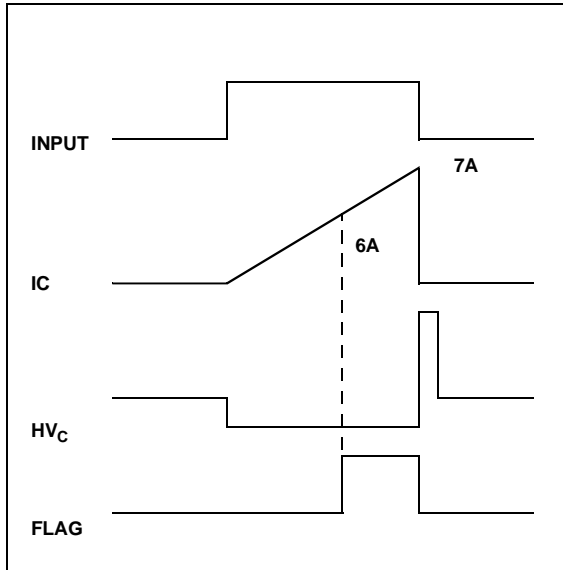


FIGURE 6: Threshold Collector Current Vs Temperature

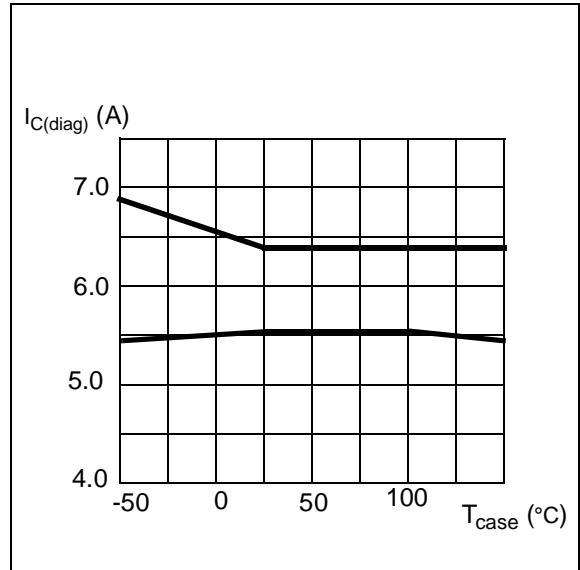
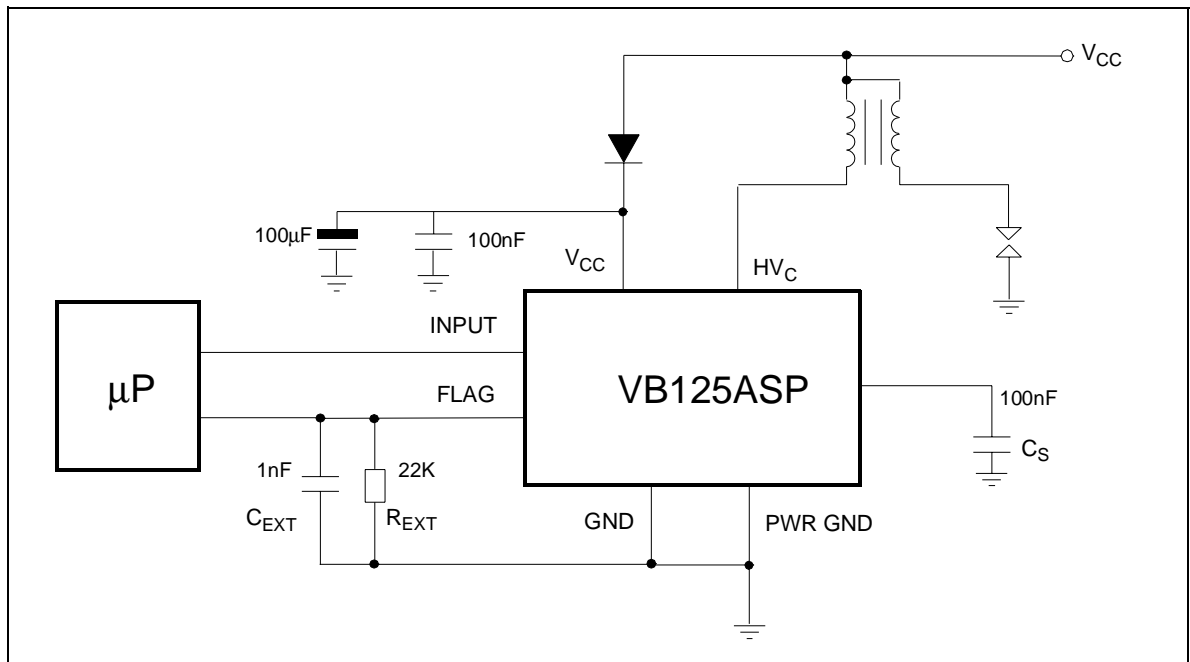


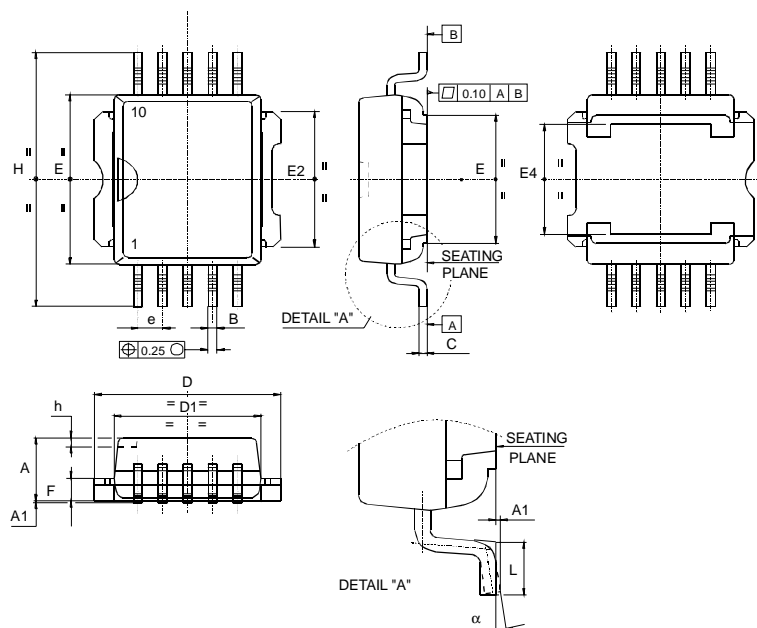
FIGURE 7: Application Circuit



PowerSO-10™ MECHANICAL DATA

DIM.	mm.			inch		
	MIN.	TYP.	MAX.	MIN.	TYP.	MAX.
A	3.35		3.65	0.132		0.144
A (*)	3.4		3.6	0.134		0.142
A1	0.00		0.10	0.000		0.004
B	0.40		0.60	0.016		0.024
B (*)	0.37		0.53	0.014		0.021
C	0.35		0.55	0.013		0.022
C (*)	0.23		0.32	0.009		0.0126
D	9.40		9.60	0.370		0.378
D1	7.40		7.60	0.291		0.300
E	9.30		9.50	0.366		0.374
E2	7.20		7.60	0.283		300
E2 (*)	7.30		7.50	0.287		0.295
E4	5.90		6.10	0.232		0.240
E4 (*)	5.90		6.30	0.232		0.248
e		1.27			0.050	
F	1.25		1.35	0.049		0.053
F (*)	1.20		1.40	0.047		0.055
H	13.80		14.40	0.543		0.567
H (*)	13.85		14.35	0.545		0.565
h		0.50			0.002	
L	1.20		1.80	0.047		0.070
L (*)	0.80		1.10	0.031		0.043
α	0°		8°	0°		8°
α (*)	2°		8°	2°		8°

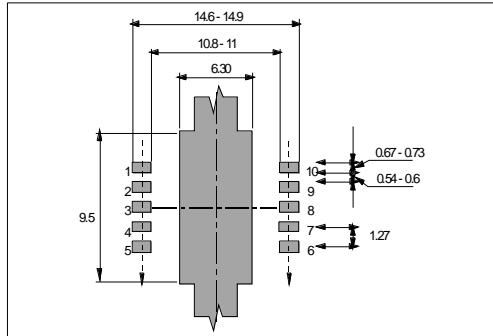
(*) Muar only POA P013P



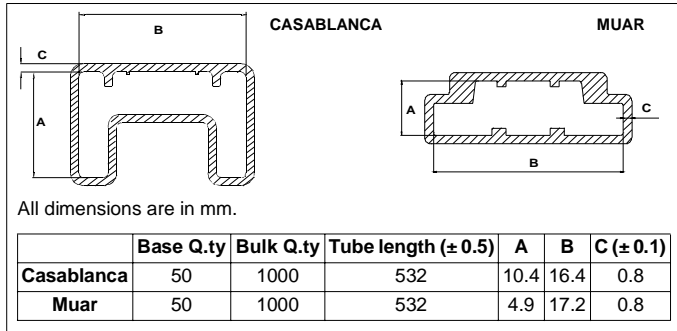
P095A

VB125ASP

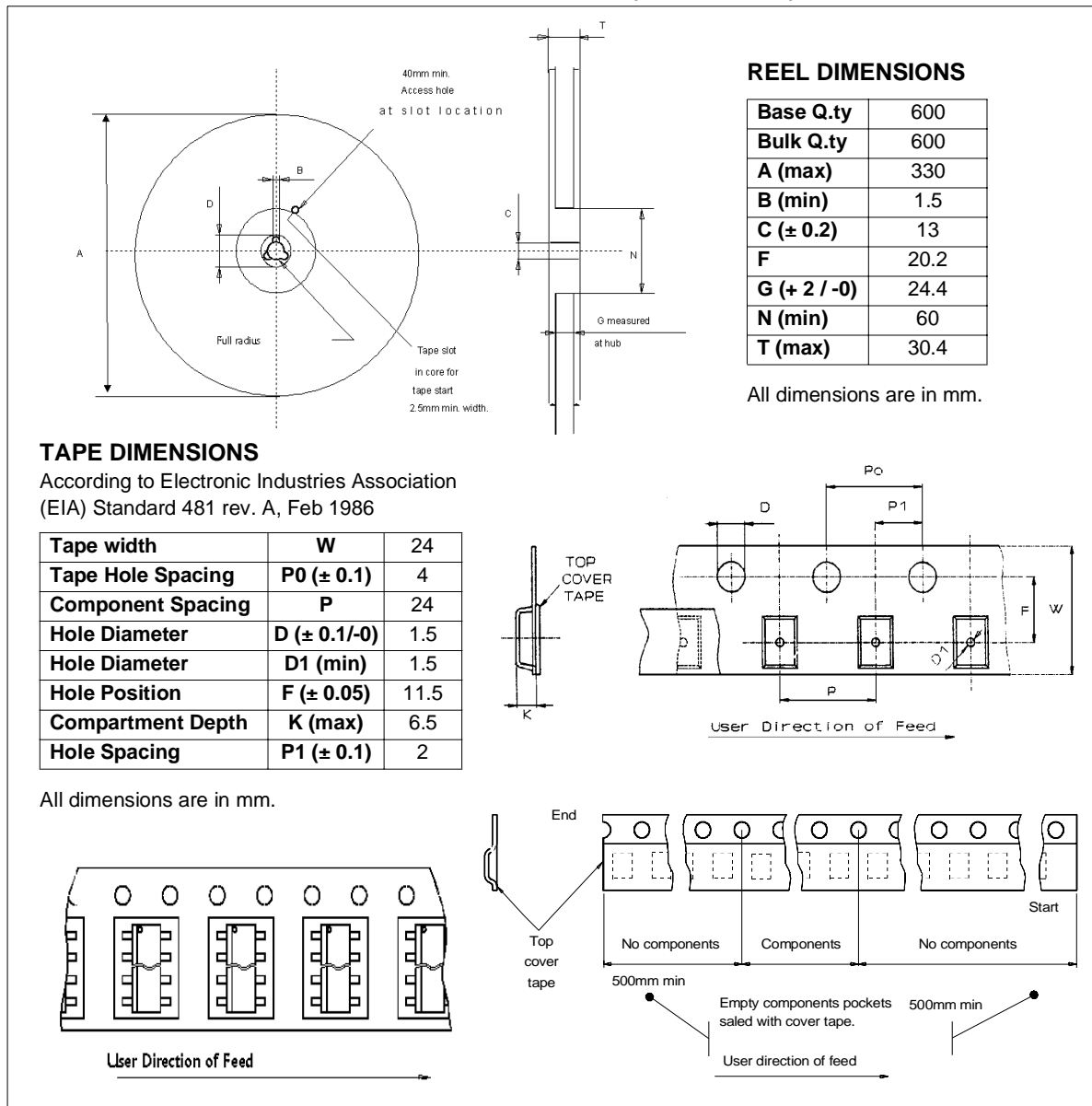
PowerSO-10™ SUGGESTED PAD LAYOUT



TUBE SHIPMENT (no suffix)



TAPE AND REEL SHIPMENT (suffix "13TR")



Information furnished is believed to be accurate and reliable. However, STMicroelectronics assumes no responsibility for the consequences of use of such information nor for any infringement of patents or other rights of third parties which may result from its use. No license is granted by implication or otherwise under any patent or patent rights of STMicroelectronics. Specifications mentioned in this publication are subject to change without notice. This publication supersedes and replaces all information previously supplied. STMicroelectronics products are not authorized for use as critical components in life support devices or systems without express written approval of STMicroelectronics.

The ST logo is a registered trademark of STMicroelectronics

© 2000 STMicroelectronics - Printed in ITALY- All Rights Reserved.

STMicroelectronics GROUP OF COMPANIES

Australia - Brazil - China - Finland - France - Germany - Hong Kong - India - Italy - Japan - Malaysia - Malta -
Morocco - Singapore - Spain - Sweden - Switzerland - United Kingdom - U.S.A.

<http://www.st.com>