

## Interactive Catalog Replaces Catalog Pages

Honeywell Sensing and Control has replaced the PDF product catalog with the new **Interactive Catalog**. The **Interactive Catalog** is a power search tool that makes it easier to find product information. It includes more installation, application, and technical information than ever before.



**Click this icon to try the new  
Interactive Catalog.**

---

### **Sensing and Control**

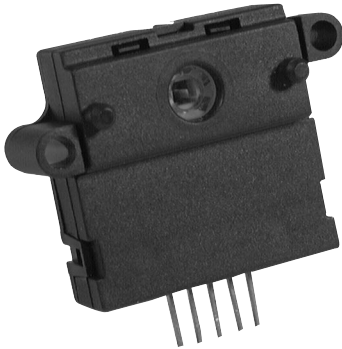
Honeywell Inc.

11 West Spring Street

Freeport, Illinois 61032

Pressure Sensors
Gage Amplified

189PC Series



- FEATURES
- Manifold mount/O-ring sealed
  - Fully signal conditioned
  - PCB termination
  - Operating temperature up to 125°C
  - Glass chip tube (non-outgassing)

189PC PERFORMANCE CHARACTERISTICS @ 8.0 ±0.01 VDC Excitation, 25°C

	Min	Typ	Max	Units
Excitation	7.00	8.00	16.0	VDC
Supply Current	—	—	6	mA
Current Sourcing Output	—	—	10	mA
Null Offset	0.95	1.00	1.05	V
Output at Full Pressure	5.80	6.00	6.15	V
Ratiometricity Error				
7 to 8V or 8 to 9V	—	±0.50	—	% Span
9 to 12 V	—	±2.00	—	% Span
Temperature Error				
(Combined null and span)	−2	0	+2	% Span
Stability over One Year	—	±0.50	—	%Span
Response Time	—	—	1.00	mS
Weight	—	12	—	grams
Short Circuit Protection	Output may be shorted indefinitely to ground			
Output Ripple	None, DC Device			
Ground Reference	Supply and output are common			

ENVIRONMENTAL SPECIFICATIONS

Operating Temperature	−40°C to +85°C (−40° to +185°F)	
Storage Temperature	−55° to +125°C (−67° to +257°F)	
Compensated Temperature	0° to +50°C (32° to +122°F)	
Shock	MIL-STD-202, Method 213 (50g, half sine, 6 msec)	
Vibration	MIL-STD-202, Method 204 (10 to 2000 Hz at 10 g)	
Media	P2 port	Wetted materials; polyester housing, epoxy adhesive, silicon, borosilicate glass, and silicon-to-glass bond*

\*Liquid media containing some highly ionic solutions could potentially neutralize the chip-to-glass tube bond.

Amplified

# Pressure Sensors

## Gage Amplified

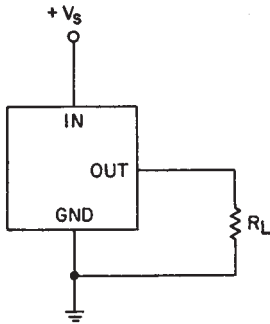
189PC Series

189PC SERIES ORDER GUIDE GAGE TYPE

Catalog Listing	Pressure Range psi	Overpressure psi Max.	Linearity, %Span
			P2 > P1 Max.
189PC15GM	0-15	45	±2.00
189PC100GM	0-100	250	±1.50
189PC150GM	0-150	250	±1.50

### Electrical Connections

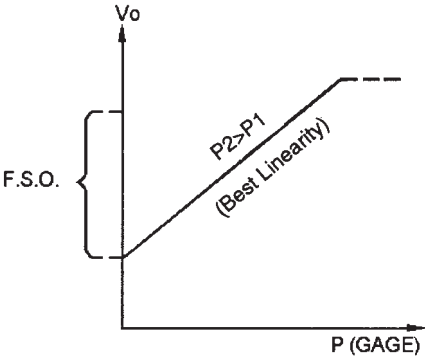
#### Voltage Excitation



#### Pin Designation

- Pin 1 =  $V_{SS}$
- Pin 2 =  $V_{out}$
- Pin 3 = GND
- Pin 4 = No Connect
- Pin 5 =  $V_{CC}$

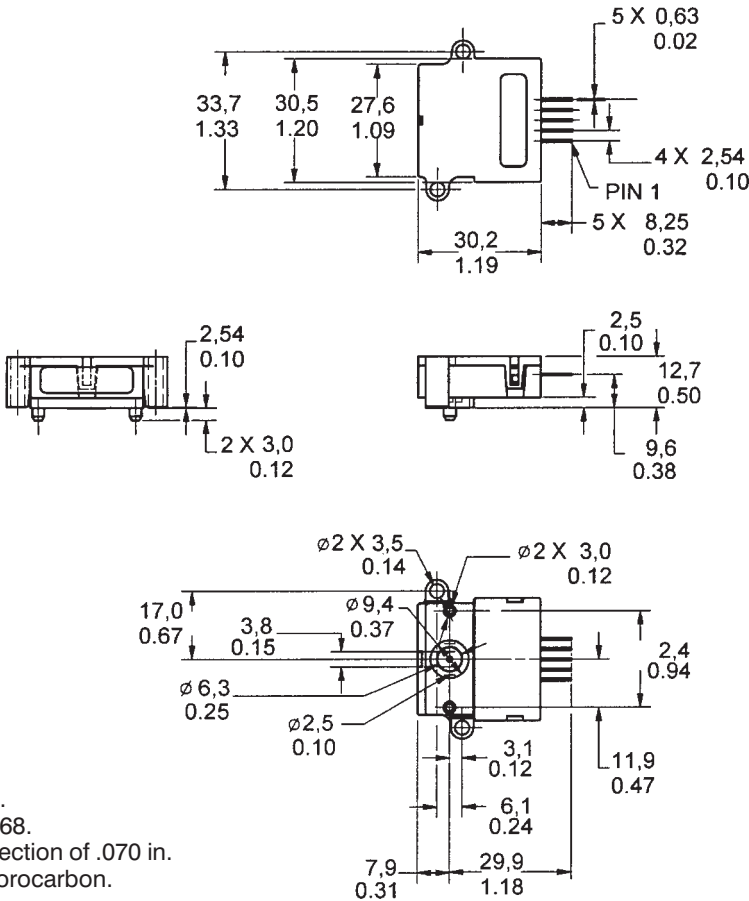
#### Pressure Reference Gage



#### NOTES

- Input and output share a common ground.
- $R_L$  must be greater than or equal to 3000 ohms.

#### MOUNTING DIMENSIONS (for reference only)



O-Ring provided with sensor.  
O-Ring Part Number: SS-12168.  
O.D. of .114 in. and a cross section of .070 in.  
Material is 70 Durometer Fluorocarbon.