

Customer Information Sheet

DRAWING No.: M80-01900XX

SHEET 2 OF 2

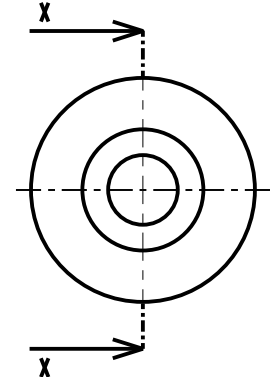
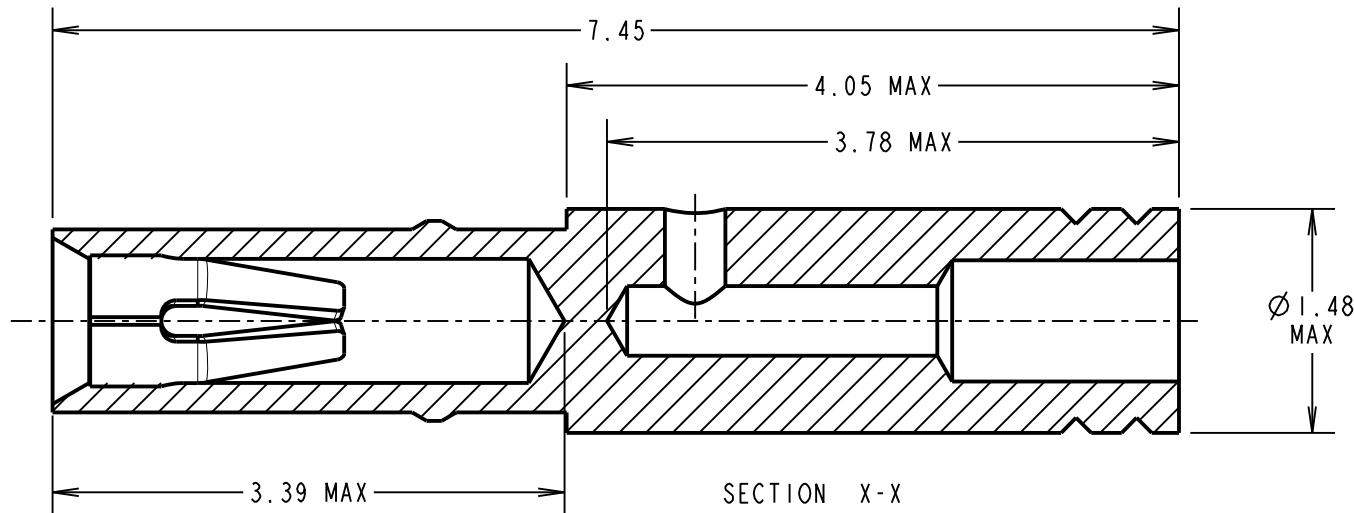
IF IN DOUBT - ASK

(C)

NOT TO SCALE

THIRD ANGLE PROJECTION

ALL DIMENSIONS IN mm

**SPECIFICATION:****MATERIAL:**

CONTACT SHELL = BRASS

CONTACT CLIP = BERYLLIUM COPPER

FINISH:01 = 3.5 - 5.0 μ 100% TIN OVER NICKEL
SHELL, 0.3 μ GOLD CLIP05 = 0.28 μ GOLD SHELL, 0.3 μ GOLD CLIP**MECHANICAL:**

INSERTION FORCE = 2.8N MAX, 1.0N MIN

WITHDRAWAL FORCE = 1.8N MAX, 0.2N MIN

DURABILITY = 500 OPERATIONS

ENVIRONMENTAL:

OPERATING TEMPERATURE = -55°C TO +125°C

PACKING:

BULK

FOR COMPLETE SPECIFICATION, SEE COMPONENT
SPECIFICATION C005XX (LATEST ISSUE)**ORDER CODE:****M80-01900XX****FINISH:**01 - GOLD CLIP, 100% TIN OVER NICKEL
SHELL

05 - GOLD CLIP, GOLD SHELL

NOTES:

- SUITABLE FOR WIRE GAUGE 28, 30 & 32 AWG. MAXIMUM INSULATION DIAMETER Ø0.75mm, BS3G210 TYPE A WIRE AND MIL-W-16878 TYPE ET WIRE ARE RECOMMENDED.
STRIP WIRE BY 2.00mm FOR CRIMPING.
- RECOMMENDED CRIMP TOOL = M22520/2-01 WITH POSITIONER T5747.
REFER TO INSTRUCTION SHEET IS-01 FOR CRIMPING INSTRUCTIONS.
- RECOMMENDED MATING PIN SIZE = Ø0.51-0.46mm.

SB	2	26.01.12	11637
NAME	ISS.	DATE	C/NOTE
APPROVED: S.BENNETT			
CHECKED: S.FLOWER			
DRAWN: S. MCCULLAGH			
CUSTOMER REF.:			
ASSEMBLY DRG:			

HARWINwww.harwin.com
technical@harwin.comTHIS DRAWING AND ANY
INFORMATION OR DESCRIPTIVE
MATTER SET OUT HEREON ARE
CONFIDENTIAL AND COPYRIGHT
PROPERTY OF THE HARWIN
GROUP AND MUST NOT BE
DISCLOSED, LOANED, COPIED
OR USED FOR MANUFACTURING,
TENDERING OR FOR ANY
OTHER PURPOSE WITHOUT
THEIR WRITTEN PERMISSION.**TOLERANCES**X. = ± 1 mm
X.X = ± 0.25 mm
X.XX = ± 0.10 mm
X.XXX = ± 0.01 mmANGLES = $\pm 5^\circ$

UNLESS STATED

MATERIAL:

SEE ABOVE

FINISH: SEE ABOVE

S/AREA: mm²**TITLE:**CRIMP SOCKET
CONTACT ASSEMBLY
(EXTRA SMALL BORE)

DRAWING NUMBER:

M80-01900XXSHT
2 OF 2