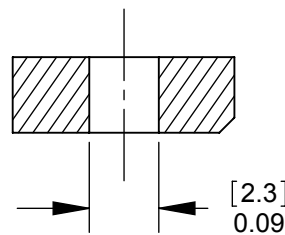
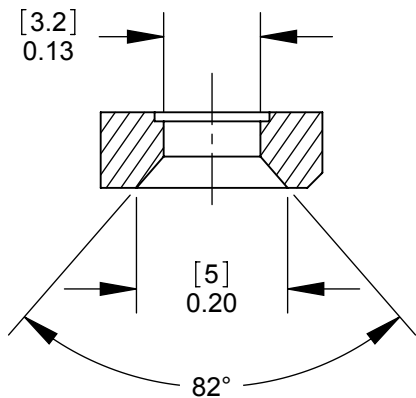


**PD3MSC1  
FRONT MOUNT**  
SECTION A-A  
SCALE 4 : 1

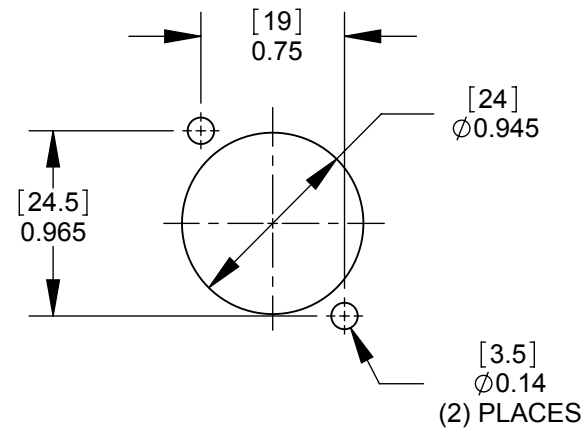
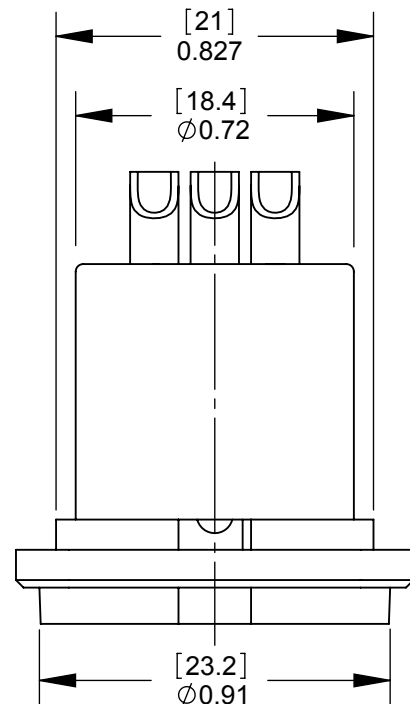


**PD3MSC2  
REAR MOUNT**  
SECTION A-A  
SCALE 4 : 1



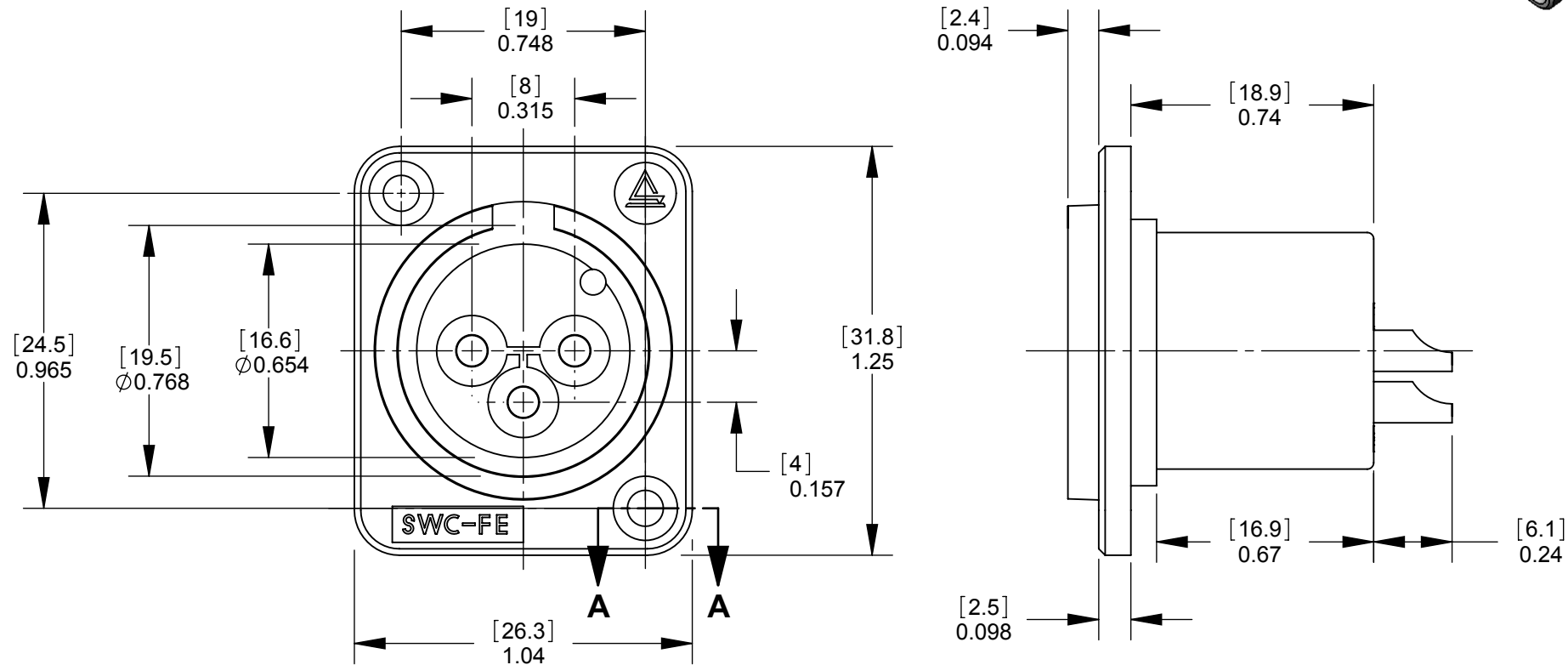
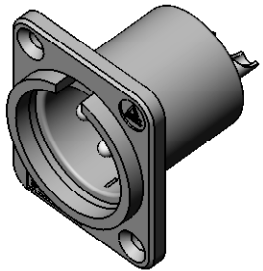
**PD3MSC3  
REAR MOUNT**  
SECTION A-A  
SCALE 4 : 1

- NOTES:
- 1. MATERIALS:  
HOUSING - THERMOPLASTIC, BLACK  
PINS - COPPER ALLOY (SEE TABLE FOR FINISH)
  - 2. THESE PRODUCTS ARE RoHS COMPLIANT.



RECOMMENDED  
PANEL CUT-OUT

PART NUMBER	MOUNTING STYLE SEE SECTION A-A	TERMINAL PLATING
PD3MSC1	FRONT MOUNT	SILVER
PD3MSC2	REAR MOUNT	SILVER
PD3MSC3	FRONT MOUNT	SILVER
PD3MSC1AU	FRONT MOUNT	GOLD
PD3MSC2AU	REAR MOUNT	GOLD
PD3MSC3AU	FRONT MOUNT	GOLD



CUSTOMER DRAWING

					THIS DRAWING DESCRIBES A DESIGN CONSIDERED PROPRIETARY IN NATURE, DEVELOPED AND MANUFACTURED BY SWITCHCRAFT INC. AND IS RELEASED ON A CONFIDENTIAL BASIS FOR IDENTIFICATION PURPOSES ONLY.				
					SIZE	WIDTH	MULT	LBS/M	*
					FINISH SPEC No.			MATERIAL SPEC No.	
					FIRST USED ON		SCALE 2:1		Switchcraft®
					DATE DRAWN 4/27/10	BY RS	CHKD RS 4/27/10	APVD TJK 4/28/10	
					NAME PLASTIC PANEL MOUNT QG CONNECTOR, SOLDERCUP, RoHS			PART No. PD3MSC SERIES	REV A
A	22118	1/14/98	RS	TJK	DO NOT SCALE DRAWING				
REV	ECO NUMBER	DATE	BY	APVD					
REVISIONS									