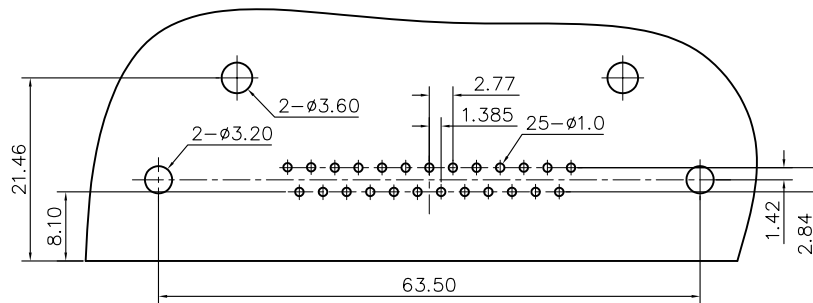
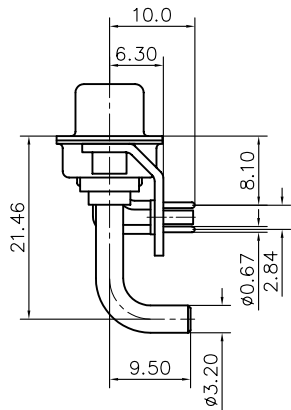
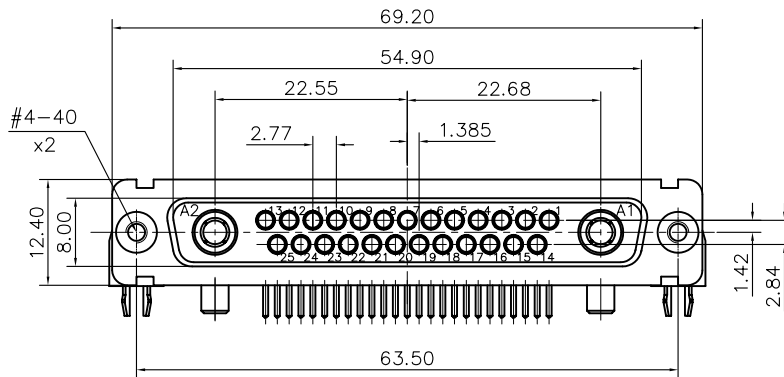


This document is the property of Amphenol Corporation and is delivered on the express condition that it is not to be disclosed, reproduced or used, in whole or in part, for manufacture or sale by anyone other than Amphenol Corporation without its prior consent, & that no right is granted to disclose or to use any information in this document.



RECOMMENDED P.C.B LAYOUT  
(TOLERANCE +/-0.03)



REVISIONS				
SYM	ECN	DESCRIPTION	DATE	APPROVED
A	HK4748	Release new drawing	10/24/07	IP

### D-SUB TECHNICAL DATA

SHELL: Steel 2.5um(100u") min tin over 1.25um(50u") min nickel  
BODY: Glass filled thermoplastic.  
Flame retardant to UL94 V-0 Color Black  
CONTACTS: Signal contacts: Brass, 0.4um(15u") min gold over 1.25um(50u") min nickel  
Front power contact: Bronze, 0.4um(15u") gold over 1.25um(50u") nickel  
Rear power contact: Brass, 100u" tin over 50u" nickel  
BRACKET: Steel, 2.5um(100u") min tin over 1.25um(50u") min nickel  
BOARDLOCK: Phosphor copper, 2.5um(100u") min tin over 1.25um(50u") min nickel  
REAR NUT: Brass, 2.5um(100u") min tin over 1.25um(50u") min nickel  
ELECTRICAL: Voltage rating: Signal and power contacts: 300 V RMS at 50 Hz  
Current rating Signal contacts 7.5A. power contacts 20A to 40A.  
Withstanding Voltage >1000 V RMS at 50 Hz for one minute  
Insulation resistance >5000 M Ohms  
Contact resistance 20 mOhms max.  
CLIMATIC: Temperature range -55 °C up to 155°C  
Damp heat 56 days(40 °C-95% HR)  
MARKING: Amphenol...(Series No.)  
Manufacturing date  
Commercial reference

### PRODUCT CODE

L 77TW C H 27W2 S R605

RoHS Compliance

77TW: Tin plated shells

Shell Size :C

H=4-40 rear nut

R605: RM6 snap in assy  
grounding plug  
Printed circuit terminations  
US foot print with metal  
bracket

Contact type:  
S:Female  
P: Male

Configuration: 27W2

UNLESS OTHERWISE SPECIFIED TOLERANCES		APPROVAL	DATE
	U.S. METRIC	DRAWN Lisa peng	08/10/07
.X +/-	0.50	CHECKED tik.wang	08/10/07
.XX +/-	0.30		
.XXX +/-	0.20		
FRACTIONS +/-			
ANGLES +/-	5°		
FOR MATERIALS AND FINISHES SEE NOTES		DRAWING FILE : drawing/Draw/CL77TWCH27W2SR605	
REMOVE SHARP EDGES		ANGLE OF PROJECTION	
DIMENSIONS			
U.S.	INCHES		
METRIC	MM		

Amphenol

TITLE  
Hybrid connector, TW series

SIZE	DRAWING NO.	REV.
A4	C L77TWCH27W2SR605	A
SCALE	NONE	SHEET 1 OF 1

# Mouser Electronics

Authorized Distributor

Click to View Pricing, Inventory, Delivery & Lifecycle Information:

[Amphenol:](#)

[L77TWCH27W2SR605](#)