

Distributed by:

JAMECO[®]
ELECTRONICS

www.Jameco.com ♦ 1-800-831-4242

The content and copyrights of the attached
material are the property of its owner.

Jameco Part Number 42068

.200"(5.08mm) pitch power connectors

CH396-04 Series (old item number JS-1114-04H-R)

* Poles:4

* Material:NYLON 66 UL94V-2

* Suitable CT396H series terminal

Specifications

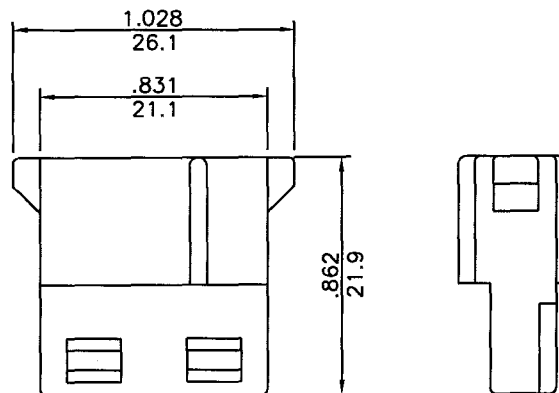
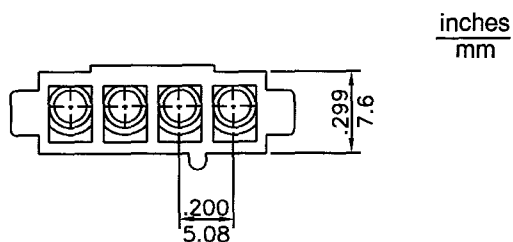
* Current rating: 5A AC, DC

* Voltage rating: 250V AC, DC

* Temperature range: -25°C~+120°C

* Insulation resistance: 1,000MΩ min.

* Withstand voltage: 1,500V AC/minute



.200"(5.08mm) pitch crimp terminal

CT396H Series

* Material:Brass

* Finished:Tin-plated 60u"

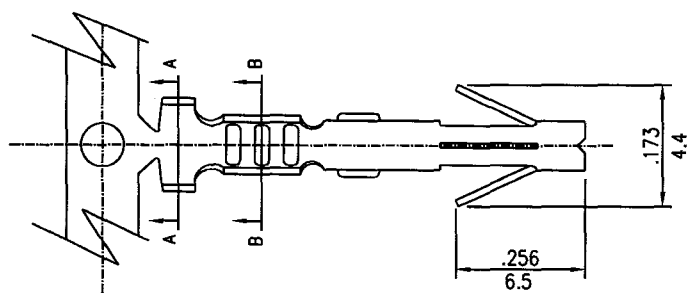
* Used in CH396-04 series housings

* Wire range:AWG#16~#18

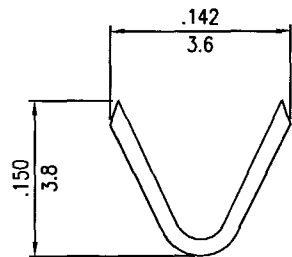
* Insulation O.D:2.50mm(max)

* Thickness:0.30mm

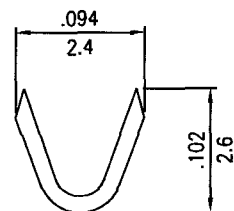
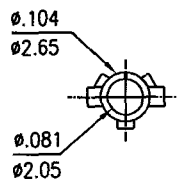
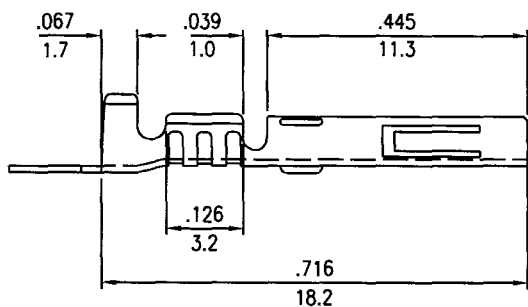
* Q'TY:7,000pcs/reel



inches
mm



A-A SECTION



B-B SECTION