

MICRO SWITCH

A DIVISION OF MINNEAPOLIS-HONEYWELL REGULATOR COMPANY
FED. MFR. CODE 91929

SWITCH — ACTUATOR

CATALOG LISTING

JX-20

5

JX-20

M

DRAWING
NUMBER

ISSUE

5

REPLACES

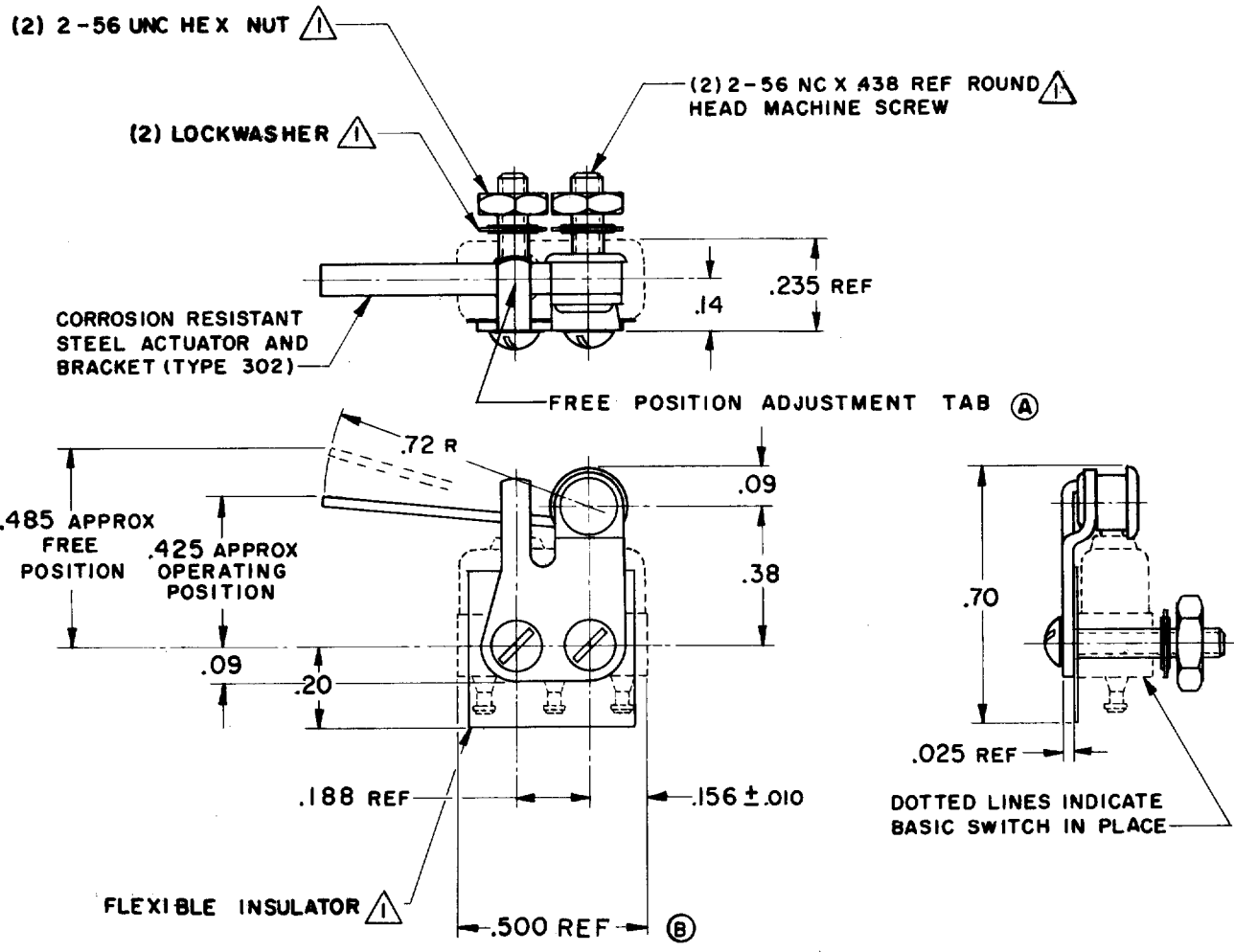
RELEASE NO. SR-7915

CHECK 8.4.5. 14 NOV 58

CHECK 23 SEPT 58

CHECK 24 NOV 58

CHECK 18 SEPT 58



NOTE—
△—FURNISHED UNASSEMBLED.

THIS DRAWING COVERS A PROPRIETARY ITEM AND IS THE PROPERTY OF MICRO SWITCH, A DIVISION OF MINNEAPOLIS-HONEYWELL REGULATOR CO. THIS DRAWING IS NOT TO BE COPIED OR USED WITHOUT THE APPROVAL OF MICRO SWITCH.

CHARACTERISTICS WITH ISX1-T BASIC SWITCH INSTALLED	
OPERATING FORCE—	— 1 OZ APPROX
RELEASE FORCE—	— 4 GRAMS MIN (A)
DIFFERENTIAL TRAVEL—	— .030 APPROX
OVERTRAVEL—	— .030 APPROX

ELECTRICAL DATA	
CONTACT ARRANGEMENT	BREAK DISTANCE

SCALE 2 TO 1	
DO NOT SCALE PRINT	
UNLESS OTHERWISE SPECIFIED DIMENSIONS ARE IN INCHES	
TOLERANCES ARE:	
ONE PLACE (.0)	±.030
TWO PLACE (.00)	±.015
THREE PLACE (.000)	±.005
ANGLES	±
WEIGHT	

FO-50378

DRAWN

R. E. R.

Mouser Electronics

Authorized Distributor

Click to View Pricing, Inventory, Delivery & Lifecycle Information:

[Honeywell:](#)

[JX-20](#)