

Male Style H 10 + 2



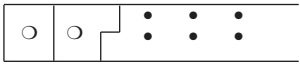
Series 8449 – 2 rows (2 x 5) + 2



Contact Design and Termination Length	Number of Contacts	Loading Description	Part Number
			Performance classes according to DIN 41612 I
Power Contacts = dip Solder	10 + 2	fully loaded	12 8449 010 002 169
Special Contacts = pc Solder	10 + 2	fully loaded + ground in z32	12 8449 010 102 169

NB: Additional Plating & Loading Variations: Please contact your local AVX sales office or distributor.

LOADING DESCRIPTION

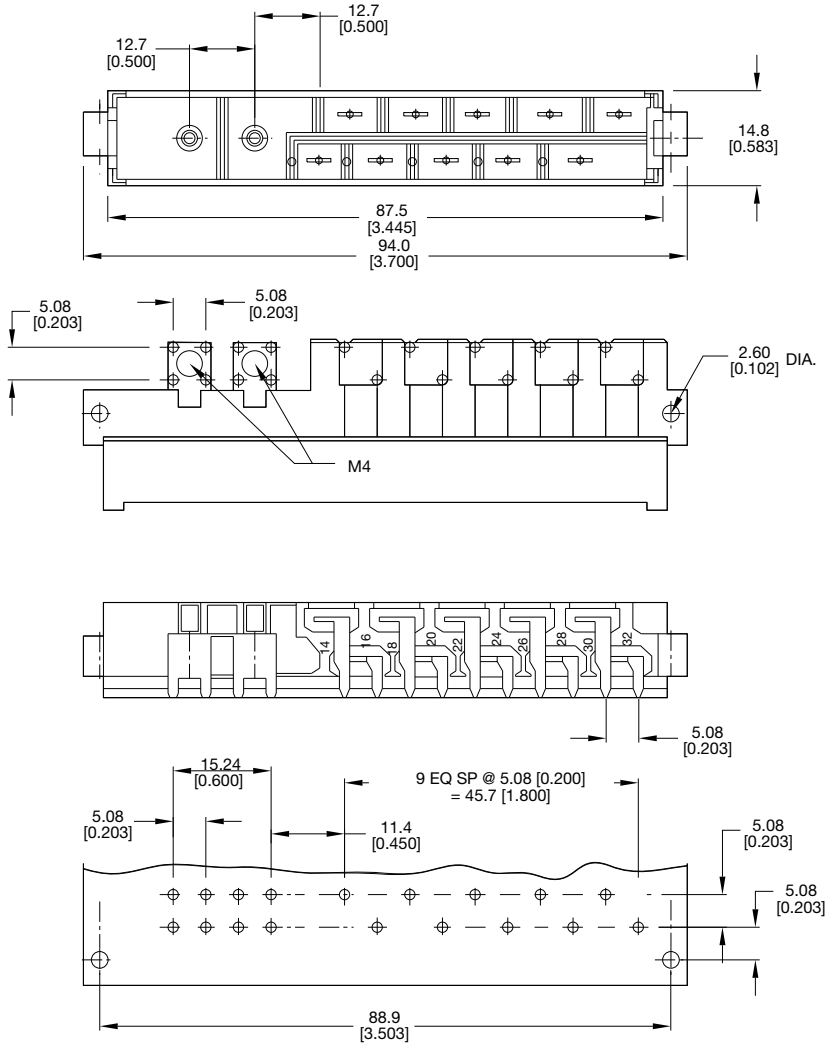


10 + 2 contacts, fully loaded



10 + 2 contacts, fully loaded with ground in Z32

DIMENSIONS



Female Style H 10 + 2



Series 8449 – 2 rows (2 x 5) + 2



Contact Design and Termination Length	Number of Contacts	Loading Description	Part Number
			Performance classes according to DIN 41612
Power Contacts = Screw	10 + 2	fully loaded	20 8449 010 001 169
Special Contacts = Solder			
Power Contacts = Screw	10 + 2	fully loaded	20 8449 010 002 169
Special Contacts = Screw			

NB: Additional Plating & Loading Variations: Please contact your local AVX sales office or distributor.

LOADING DESCRIPTION

10 + 2 contacts, fully loaded

DIMENSIONS

Top View Dimensions:

- Overall Length: 90.0 [3.543]
- Pin Pitch (between rows): 80.8 [3.180]
- Overall Width: 95.0 [3.740]
- Pin Diameter: 2.80 [0.110] DIA.

Side View Dimensions:

- Pin Height: 6.00 [0.233]
- Mounting Flange Width: 84.9 [3.087]
- Mounting Flange Thickness: 3.00 [0.120]
- Base Width: 59.1 [2.330]