

Video signal switcher

BA7649A / BA7649AF

The BA7649A and BA7649AF are five-channel analog multiplexers (the IN5 pin can be used a mute input) designed for use in video cassette recorders. They feature large dynamic range, and wide operating frequency range, and have sync-tip inputs which are ideal for switching video signals.

●Applications

Video cassette recorders and televisions

●Features

- 1) 5-input / 1-output switches.
- 2) Built-in mute (the IN5 pin can be use a mute input).
- 3) Sync-tip clamp inputs.
- 4) Wide operating supply voltage range
(4.5V to 13.0V).
- 5) Low power consumption (48mW Typ.).
- 6) Excellent frequency characteristics
(10MHz, 0dB Typ.).
- 7) Wide dynamic range (3.5V_{P-P} Typ.).
- 8) Low interchannel crosstalk
(– 65dB Typ., f = 4.43MHz).
- 9) DIP / SOP 14 pin package.

●Absolute maximum ratings (Ta = 25°C)

BA7649A

Parameter	Symbol	Limits	Unit
Power supply voltage	V _{CC}	13.5	V
Allowable current	P _d	1100*	mW
Operating temperature	Topr	– 25 ~ + 75	°C
Storage temperature	Tstg	– 55 ~ + 125	°C

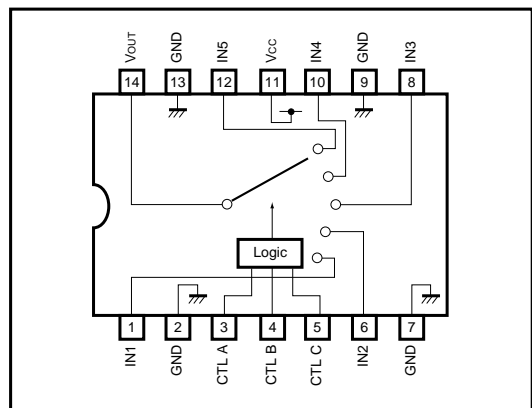
* Reduced by 11.0mW for each increase in Ta of 1°C over 25°C.

BA7649AF

Parameter	Symbol	Limits	Unit
Power supply voltage	V _{CC}	13.5	V
Allowable current	P _d	450*	mW
Operating temperature	Topr	– 25 ~ + 75	°C
Storage temperature	Tstg	– 55 ~ + 125	°C

* Reduced by 4.5mW for each increase in Ta of 1°C over 25°C when mounted on a 50mm × 50mm PCB board.

●Block diagram



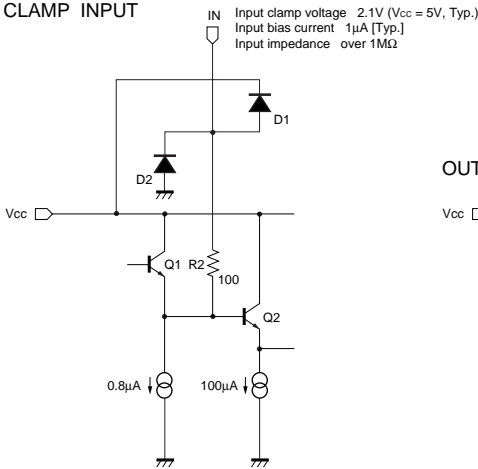
●Truth table

CTLA	CTLB	CTLC	OUT
L (OPEN)	L (OPEN)	L (OPEN)	IN1
L (OPEN)	H	L (OPEN)	IN2
H	L (OPEN)	L (OPEN)	IN3
H	H	L (OPEN)	IN4
*	*	H	MUTE (IN5)

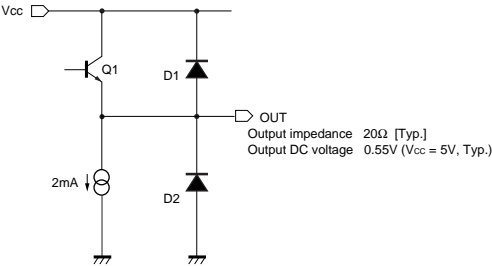
* Either "L (open)" or "H".

●Equivalent circuits

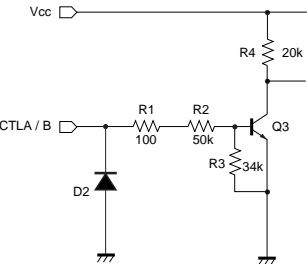
CLAMP INPUT



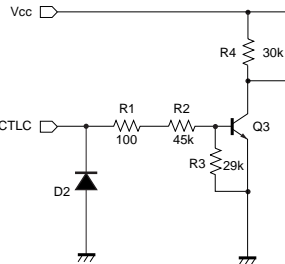
OUTPUT



CTLA / CTLB



CTLC



●Electrical characteristics (unless otherwise noted, $T_a = 25^\circ\text{C}$ and $V_{CC} = 5\text{V}$)

Parameter	Symbol	Min.	Typ.	Max.	Unit	Conditions
Operating voltage	V_{CC}	4.5	—	13.0	V	—
Supply current	I_{CC}	—	9.5	14.5	mA	—
Maximum output level	V_{om}	3.0	3.5	—	V_{P-P}	$f = 1\text{kHz}$, $\text{THD} = 0.5\%$
Voltage gain	G_V	-0.5	0	0.5	dB	$f = 1\text{MHz}$, $V_{IN} = 1.0\text{V}_{P-P}$
Interchannel crosstalk	C_T	—	-65	—	dB	$f = 4.43\text{MHz}$, $V_{IN} = 1.0\text{V}_{P-P}$
Frequency characteristics	G_f	-3.0	0	1.0	dB	$f = 10\text{MHz} / 1\text{MHz}$, $V_{IN} = 1.0\text{V}_{P-P}$
CTL pin switching level A	V_{TH-A}	1.0	2.0	3.0	V	—
CTL pin switching level B	V_{TH-B}	1.0	2.0	3.0	V	—
CTL pin switching level C	V_{TH-C}	1.0	2.0	3.0	V	—

○Not designed for radiation resistance.

●Measurement circuit

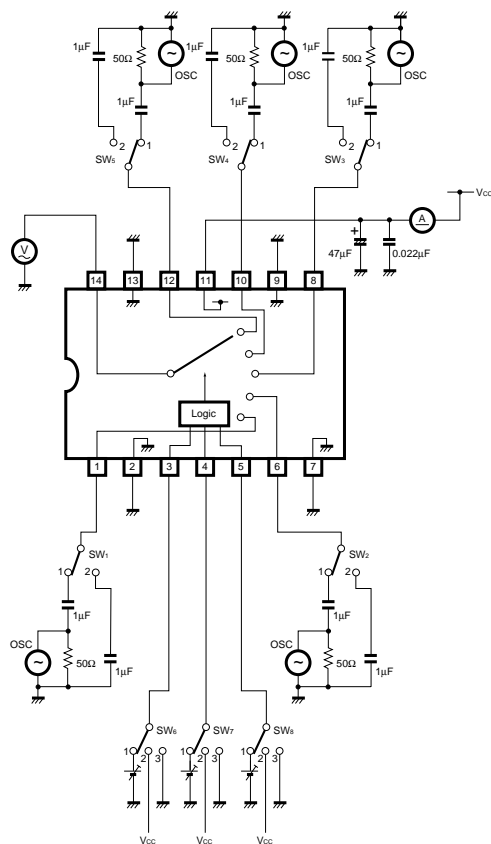


Fig. 1

● Measurement conditions

Parameter		Symbol	Switch settings								Measurement method
			SW ₁	SW ₂	SW ₃	SW ₄	SW ₅	SW ₆	SW ₇	SW ₈	
Current dissipation		I _{CC}	2	2	2	2	2	3	3	3	Ammeter
Maximum output level	IN 1	V _{om}	1	2	2	2	2	3	3	3	f = 1kHz, THD = 0.5% Note 1
	IN 2	V _{om}	2	1	2	2	2	3	2	3	
	IN 3	V _{om}	2	2	1	2	2	2	3	3	
	IN 4	V _{om}	2	2	2	1	2	2	2	3	
	IN 5	V _{om}	2	2	2	2	1	*	*	2	
Voltage gain	IN 1	G _V	1	2	2	2	2	3	3	3	f = 1MHz, V _{IN} = 1V _{P-P} Note 2
	IN 2	G _V	2	1	2	2	2	3	2	3	
	IN 3	G _V	2	2	1	2	2	2	3	3	
	IN 4	G _V	2	2	2	1	2	2	2	3	
	IN 5	G _V	2	2	2	2	1	*	*	2	
Interchannel crosstalk	IN1→1N2	C _T	1	2	2	2	2	3	2	3	f = 4.43MHz, V _{IN} = 1V _{P-P} Note 3
	IN1→1N3	C _T	1	2	2	2	2	2	3	3	
	IN1→1N4	C _T	1	2	2	2	2	2	2	3	
	IN1→1N5	C _T	1	2	2	2	2	*	*	2	
	IN2→1N3	C _T	2	1	2	2	2	2	3	3	
	IN2→1N4	C _T	2	1	2	2	2	2	2	3	
	IN2→1N5	C _T	2	1	2	2	2	*	*	2	
	IN3→1N4	C _T	2	2	1	2	2	2	2	3	
	IN3→1N5	C _T	2	2	1	2	2	*	*	2	
	IN4→1N5	C _T	2	2	2	1	2	*	*	2	
Frequency characteristic	IN 1	G _f	1	2	2	2	2	3	3	3	f = 10MHz, f = 1MHz, V _{IN} = 1V _{P-P} Note 4
	IN 2	G _f	2	1	2	2	2	3	2	3	
	IN 3	G _f	2	2	1	2	2	2	3	3	
	IN 4	G _f	2	2	2	1	2	2	2	3	
	IN 5	G _f	2	2	2	2	1	*	*	2	
CTL pin switching level	CTLA	V _{TH}	2	2	1	2	2	1	3	3	Note 5
	CTLB	V _{TH}	2	1	2	2	2	3	1	3	
	CTLC	V _{TH}	2	2	2	2	1	*	*	1	

* Anywhere is possible.

Note 1: Connect a distortion meter to the output, and input a f = 1kHz sine wave. Adjust the output level until the output distortion is 0.5%.

This output voltage at this time is the maximum output level V_{om} (V_{P-P}).

Note 2: Input a 1V_{P-P}, 1MHz sine wave. The voltage gain is given by G_V = 20 log (V_{OUT} / V_{IN}).

Note 3: Input a 1V_{P-P}, 4.43MHz sine wave. The interchannel crosstalk is given by C_T = 20 log (V_{OUT} / V_{IN}).

Note 4: Input 1V_{P-P}, 1MHz and 10MHz sine waves. The frequency characteristic is given by G_f = 20 log (V_{OUT} (f = 10MHz) / V_{OUT} (f = 1MHz)).

Note 5: Input a 1V_{P-P}, 1MHz sine wave. Reduce the CTL pin voltage from V_{CC}.

The CTL pin switching level (V_{TH}) is the CTL pin voltage at which the V_{OUT} level drops below 20mV_{P-P}.

● Electrical characteristic curves

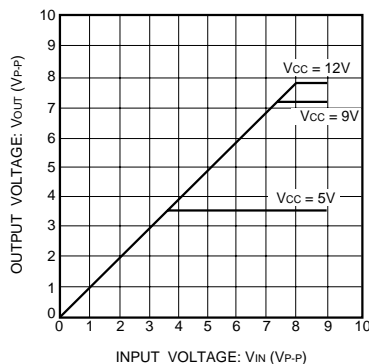


Fig. 2 V_{IN} vs. V_{OUT} (f = 1kHz)

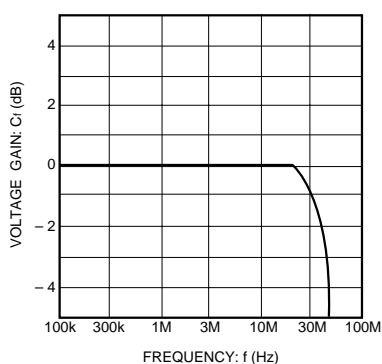


Fig. 3 Frequency characteristics

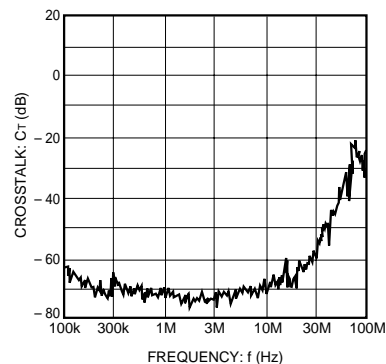
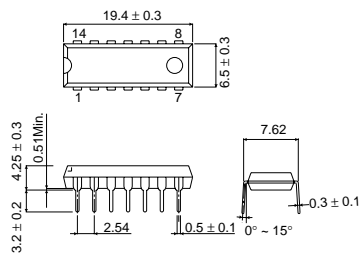


Fig. 4 Interchannel crosstalk

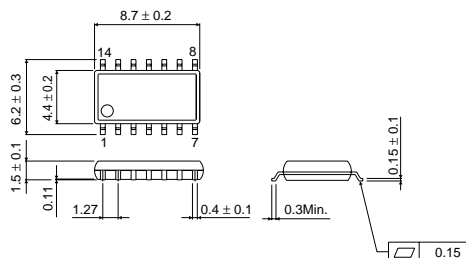
● External dimensions (Units: mm)

BA7469A



DIP14

BA7649AF



SOP14

Notes

- No technical content pages of this document may be reproduced in any form or transmitted by any means without prior permission of ROHM CO.,LTD.
- The contents described herein are subject to change without notice. The specifications for the product described in this document are for reference only. Upon actual use, therefore, please request that specifications to be separately delivered.
- Application circuit diagrams and circuit constants contained herein are shown as examples of standard use and operation. Please pay careful attention to the peripheral conditions when designing circuits and deciding upon circuit constants in the set.
- Any data, including, but not limited to application circuit diagrams information, described herein are intended only as illustrations of such devices and not as the specifications for such devices. ROHM CO.,LTD. disclaims any warranty that any use of such devices shall be free from infringement of any third party's intellectual property rights or other proprietary rights, and further, assumes no liability of whatsoever nature in the event of any such infringement, or arising from or connected with or related to the use of such devices.
- Upon the sale of any such devices, other than for buyer's right to use such devices itself, resell or otherwise dispose of the same, no express or implied right or license to practice or commercially exploit any intellectual property rights or other proprietary rights owned or controlled by
- ROHM CO., LTD. is granted to any such buyer.
- Products listed in this document use silicon as a basic material.
Products listed in this document are no antiradiation design.

The products listed in this document are designed to be used with ordinary electronic equipment or devices (such as audio visual equipment, office-automation equipment, communications devices, electrical appliances and electronic toys).

Should you intend to use these products with equipment or devices which require an extremely high level of reliability and the malfunction of which would directly endanger human life (such as medical instruments, transportation equipment, aerospace machinery, nuclear-reactor controllers, fuel controllers and other safety devices), please be sure to consult with our sales representative in advance.

About Export Control Order in Japan

Products described herein are the objects of controlled goods in Annex 1 (Item 16) of Export Trade Control Order in Japan.

In case of export from Japan, please confirm if it applies to "objective" criteria or an "informed" (by MITI clause) on the basis of "catch all controls for Non-Proliferation of Weapons of Mass Destruction.