

# TELEPHONE

## MODULAR FLUSH JACK

Round Flush Jack with mounting bracket attached.  
Mounts in any standard electrical box.

Non-UL	Color	Conductor
30-9608	Ivory	4
30-9608-BU	Ivory	4

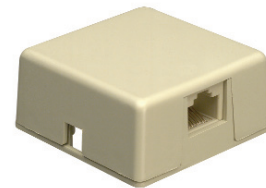
Notes: Complies with USOC numbers RJ11C, RJ13C, RJ1DC



## VOICE CONNECTING BOX

For alarm reporting devices. Equipped with 8-position, non-keyed modular jack with shorting bar. Mounts to flat surface.

Non-UL	Color	Conductor
30-9805	Ivory	8



## CRIMP TOOLS/TESTER

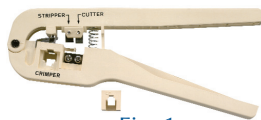


Fig. 1



Fig. 2

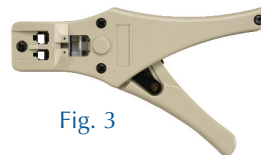


Fig. 3



Fig. 4

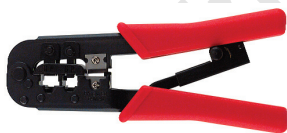


Fig. 5



Fig. 6

Retail Part No.	Bulk Part No.	Figure Number	Description	Features
30-9951	30-9951-BU	1	Modular Crimp Tool	Installs 4-Conductor Modular Plugs
12-001		2	Professional Telco® Crimping Tool	8 Contact Cut, Strip & Crimp Telco/Telephone Wire
12-004		2	Professional Telco® Crimping Tool	4/6 Contact Cut, Strip & Crimp Telco/Telephone Wire
12-005		2	Professional Telco® Crimping Tool	4 Contact Cut, Strip & Crimp Telco/Telephone Wire
12-002		3	Modular Handset Dura Crimp Tool	Crimps 4 & 6 Contact Modular Plugs & 4 Position Handset Plugs
30-9955		4	Modular Crimp Tool	Installs 10-Conductor Modular Plugs
12-2475		5	Dual Cut and Crimp Tool	Cuts & Crimps 8P8C/RJ-45, 6P6C/RJ-12 & 4P4C/RJ 11 Plugs
30-9452		6	Tele-Check Modular Line Tester	Analyzes Modular Phone Line Problems