

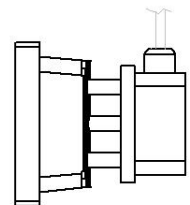
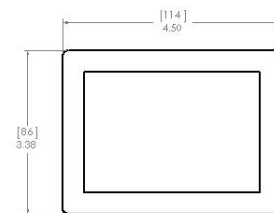
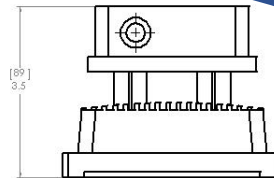


Technical Data

Part #

LLx-355C-51-10 - 85-260VAC

900 Lumen



Electrical and optical parameters (Ta = 25°, V=220)

	Symbol	Values			Unit
		MIN	TYP	MAX	
Input Voltage	V _{in}	85	220	260	V _{ac}
Input Current	I _{in}	0.14			A
Oscillation Frequency	f	50~60			Hz
Power Consumption	P	11			W
Efficiency		≥75			%
Power factor Corrector		≥0.6			
LED QTY	--	9 IN 1			
CCT	--	6000 (Cool white)			K
Luminous flux	--	900 (Cool white)			Lm
Beam Angle	--	120			Deg.
Operating Temperature	T _{opr}	-20	25	40	C

Voltage Range:

Power Consumption:

Light Output:

Color Temp:

Dimensions

LED

Enclosure:

Wiring:

Wire Length:

LLx-355C-51-10 85-260VAC

10 Watt

900 Lumen

6000K

114.5mm x 86.8mm x 104mm

Bridgelux - American Made

Cast Aluminum

Aluminum Bracket

Stainless Hardware

Black - Line

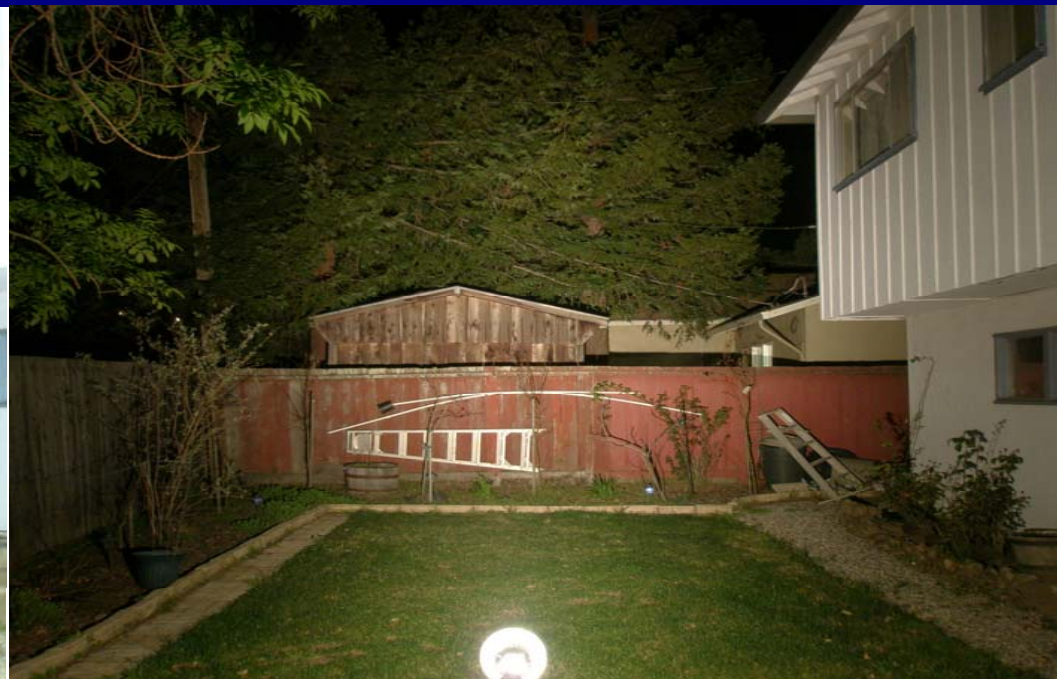
White - Neutral

Green - Ground

2 Meters (6 Foot)

www.lunasealighting.com

10 Watt LED Flood Light Vs 75 Watt Halogen



Energy Efficient High Output LED With 120 Degree Beam Angle!

This second generation Lunasea 10 Watt LED Flood Light is environmentally friendly, mercury-free, lead-free and incredibly energy efficient. Many lights look bright near the light source itself, but as you can see from the demonstration pictures to the right, what sets this 10 watt LED Flood Light apart is how it evenly maintains brightness over distance with a 120 degree beam angle, Halogen Par Flood Lights typically provide a beam angle of between 25-40 degrees.

Our high power LED illuminant provides a brilliant bright light without radiation, strobe flash or UV, while pulling a fraction of the power of halogen lamps. The die-cast aluminum radiator interfaces with ambient air to insure maximum heat dissipation across the fixture to deliver unsurpassed service in outdoor environments.

Part Numbers:

LLB-355C-01-10 (Cool White, 12VDC, 10 Watt, 120 Degree Beam Angle, 900 Lumen)

LLB-355C-51-10 (Cool White, 120VAC, 10 Watt, 120 Degree Beam Angle, 900 Lumen)

Yearly energy cost compares 10 Watt LED Flood Light vs 75 Watt Halogen Flood Light based on a US National Average kWh of \$0.1201. If using the 10 Watt LED Flood Light to replace an above 75 Watt Halogen Flood Light the energy savings will increase. Energy Savings also increase at the higher kWh tier rates.

- Replaces 75 Watt Halogen or Above
- Yearly Energy Cost @ 6 Hrs Per Day \$2.63 vs \$19.73
- LED Compared To Halogen: Hours Life 50,000 vs 3,000
- Rugged Corrosion Resistant Aluminum & 6 Foot Cord
- Compact In Size: Dimensions 5" x 4" x 4.5"

LunaseaLighting.com



10 Watt Outdoor LED Flood Light



Energy Efficient High Output LED With 120 Degree Beam Angle!

This second generation Lunasea 10 Watt LED Flood Light is environmentally friendly, mercury-free, lead-free and incredibly energy efficient. Many lights look bright near the light source itself, but as you can see from the demonstration pictures to the right, what sets this 10 Watt LED Flood Light apart is how it evenly maintains brightness over distance with a 120 degree beam angle, Halogen Par Flood Lights typically provide a beam angle of between 25-40 degrees.

- Replaces 75 Watt Halogen Light Or Above
- Yearly Energy Cost @ 6 Hrs Per Day \$2.63 vs \$19.73
- LED Compared To Halogen: Hours Life 50,000 vs 3,000
- Bridgelux High Power LED Made In The USA
- Rugged Corrosion Resistant Aluminum & 6 Foot Cord
- IP65 Outdoor Environment Rated
- Compact In Size: Dimensions 5" x 4" x 4.5"

Yearly energy cost compares 10 Watt LED Flood Light vs 75 Watt Halogen Flood Light based on the US National Average kWh of \$0.1201 (check your electrical bill for the kWh rate in your immediate area). If using the 10 Watt LED Flood Light to replace an above 75 Watt Halogen Flood Light the energy savings will increase. Energy Savings also increase at the higher kWh tier rates and increased hours of use.

Part Numbers:

LLB-355C-01-10 (Cool White, 12VDC, 10 Watt, 900 Lumen)

LLB-355C-51-10 (Cool White, 120VAC, 10 Watt, 900 Lumen)



