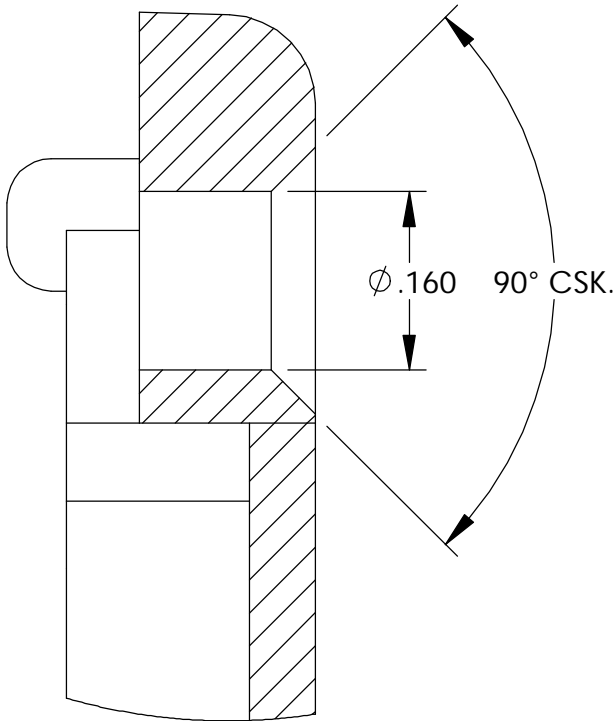


THE INFORMATION CONTAINED IN THIS DRAWING IS THE SOLE PROPERTY OF
BUD INDUSTRIES INC. ANY REPRODUCTION IN PART OR WHOLE WITHOUT
THE WRITTEN PERMISSION OF BUD INDUSTRIES INC. IS PROHIBITED.

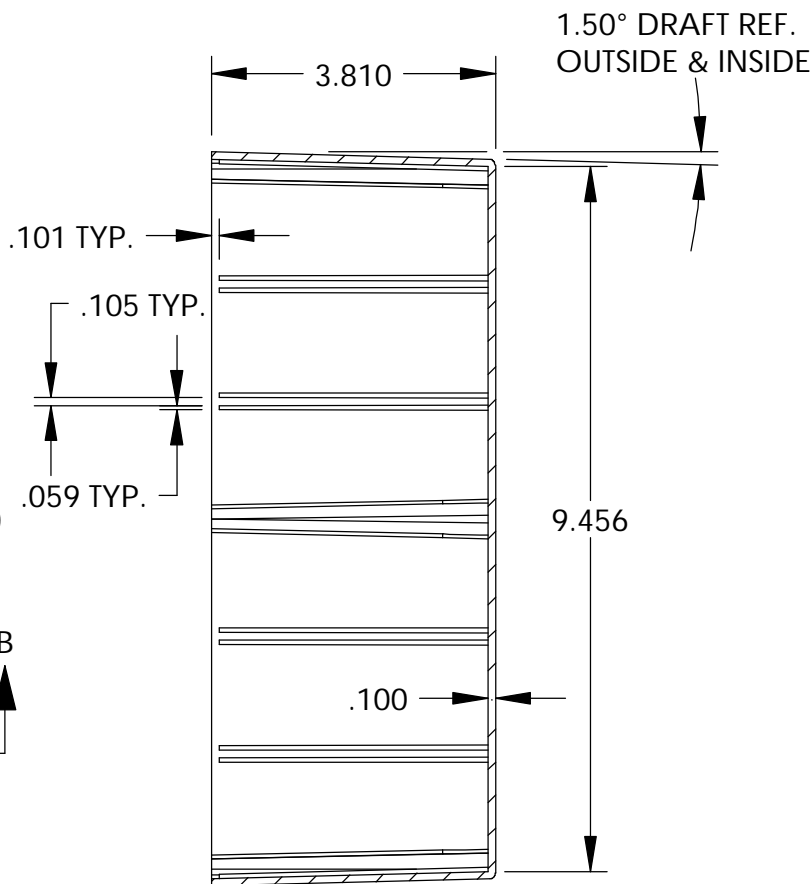
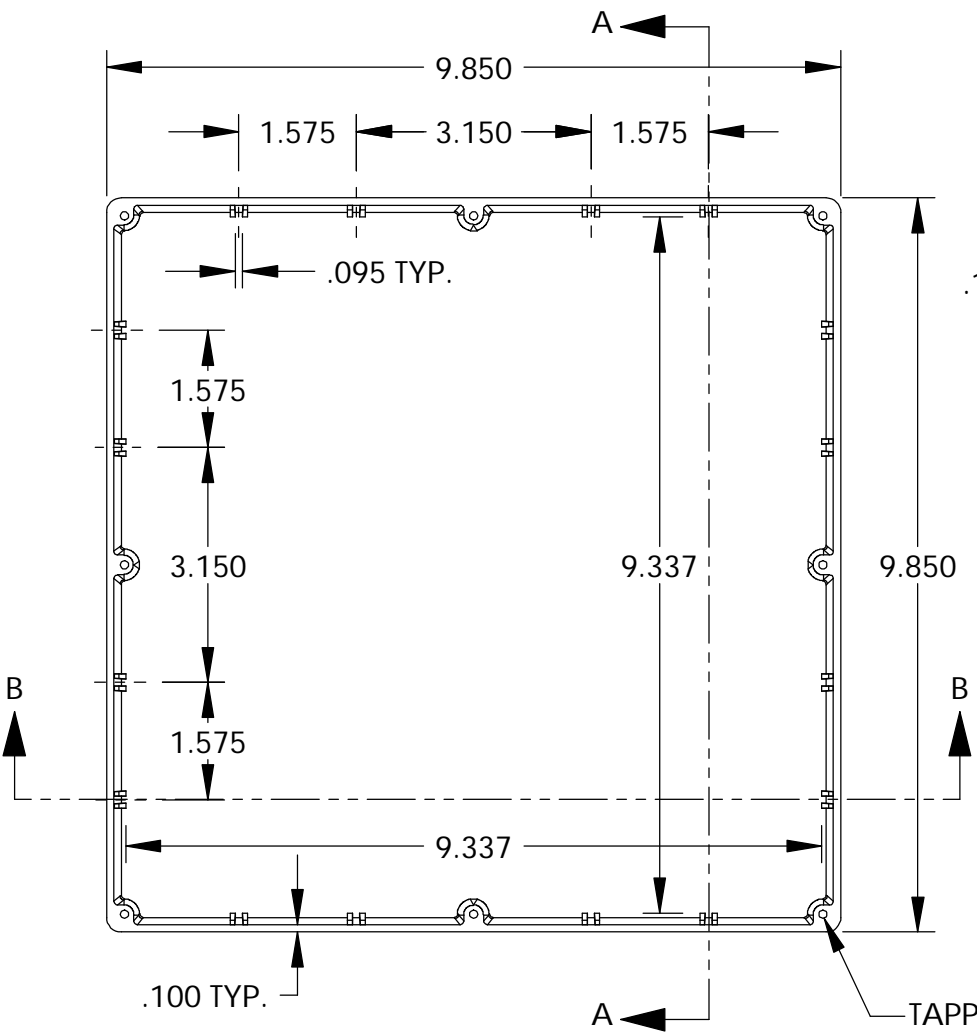
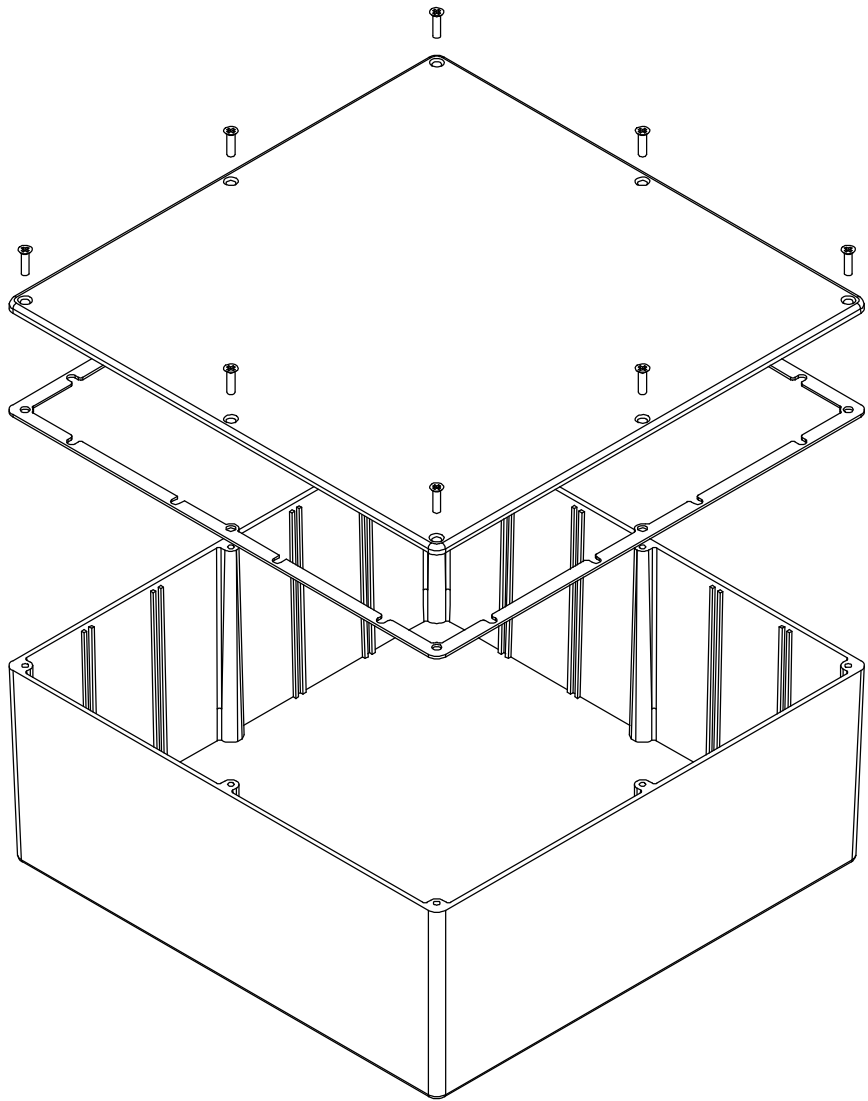
DWG. NO.	CN-5713
ISSUE	REVISIONS

MATERIAL - ALUMINUM ALLOY #ADC-12
FINISH - NATURAL (CONTACT BUD FACTORY FOR
ALTERNATE FINISHES)
GASKET - RATED IP65 NEOPRENE, SELF-ADHESIVE,
3mm THICK, COLOR BLACK
SCREWS - STAINLESS STEEL, M3.5 x 12mm LG.,
CSK. HEAD, SELF-THREADING

ALL HOLE DIAMETERS HAVE $\pm .005$ TOLERANCE.
ALL OTHER DIMENSIONS HAVE $\pm .015$ TOLERANCE.
ENCLOSURES ARE SHIPPED UNASSEMBLED WITH
ALL ITEMS SHOWN.

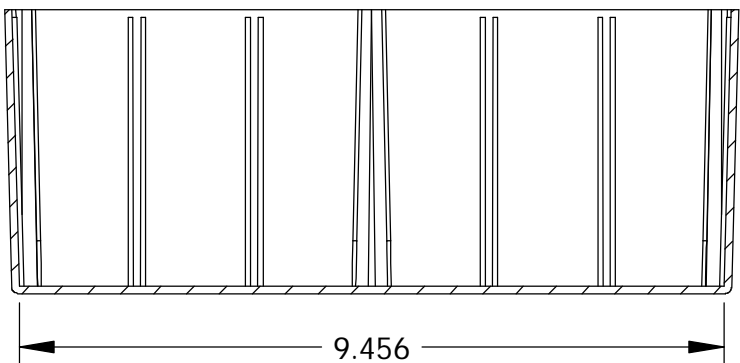


DETAIL D
SCALE 6 : 1

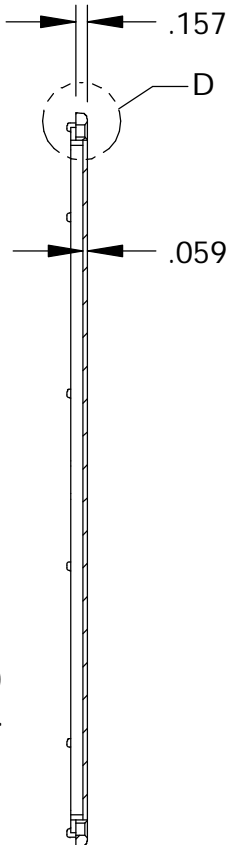
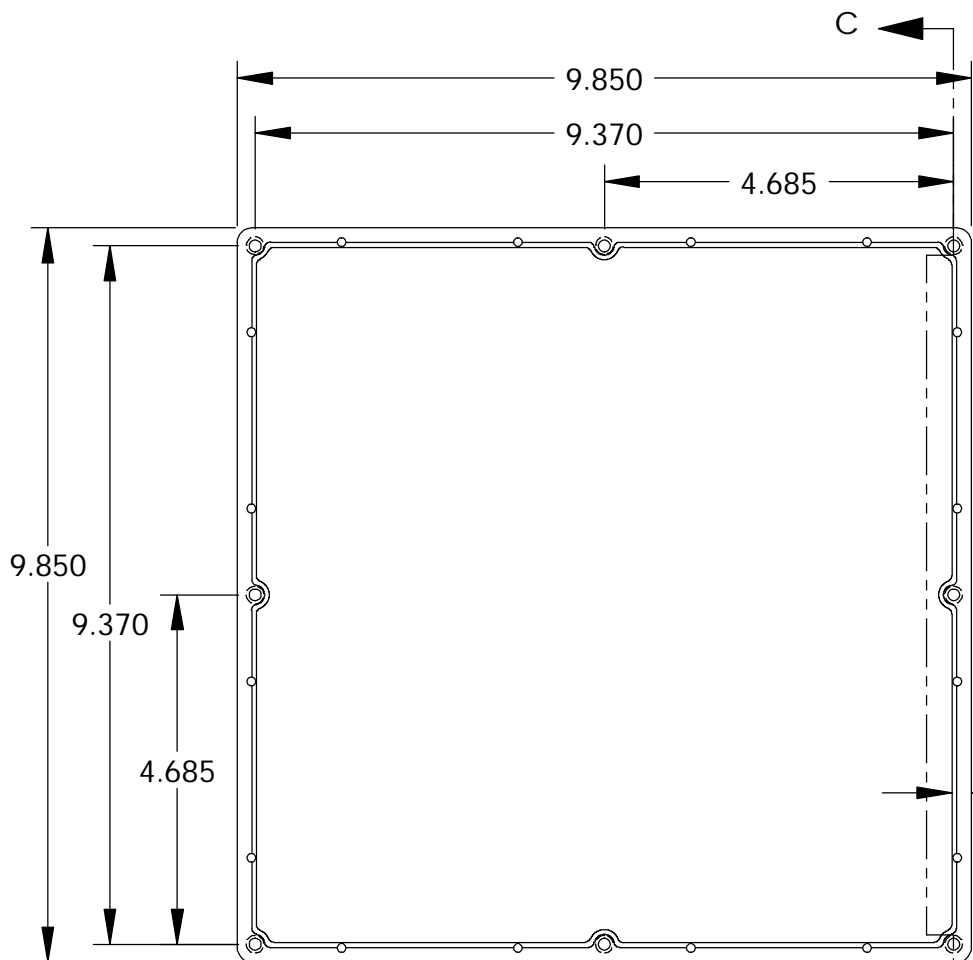


SECTION A-A

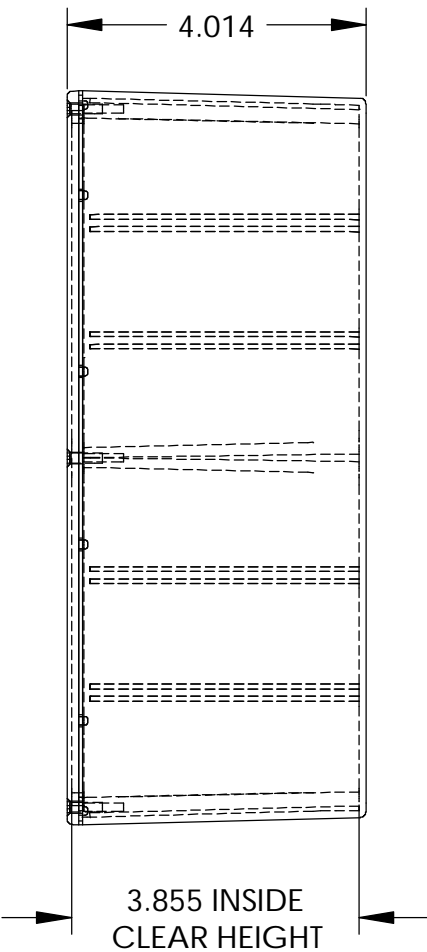
BODY



SECTION B-B



SECTION C-C



3.855 INSIDE
CLEAR HEIGHT

COVER

PARTS LIST												
			+/.005 BETWEEN HOLE CENTERS +/.015 FROM SHEARED EDGE +/.032 FROM A BENT SURFACE +/.062 BETWEEN ASSEMBLED SURFACES UNLESS OTHERWISE SPECIFIED			CAD GENERATED DRAWING. DO NOT MANUALLY UPDATE		<div>BUD INDUSTRIES INC.</div> <div>DIE CAST ALUMINUM ENCLOSURE</div>				
						APPROVALS					DATE	
						DRAWN					3-31-06	
						MATERIAL					CHECKED	
						AS NOTED						
FINISH			APPROVED			DWG. NO.		REV.				
AS NOTED						CN-5713						
DO NOT SCALE DRAWING						SCALE		SHEET 1 OF 1				

Mouser Electronics

Authorized Distributor

Click to View Pricing, Inventory, Delivery & Lifecycle Information:

[Bud Industries:](#)

[CN-5713](#)