

# SL-156 CONNECTOR WITH TPA DEVICE

TE Connectivity (TE) introduces its new generation of SL-156 wire-to-board crimp connectors with Terminal Position Assurance (TPA) device. The new housing design extends the existing SL-156 family and is fully compatible with SL-156 and MTA-156 board headers. The new housing can therefore be used as a drop-in replacement with existing headers. There is no need to change the printed circuit board (PCB) of an application.

New design features of the SL-156 housings with TPA help the shop floor workers to achieve a constant level of interconnection quality. The single-row connectors with a .156" (3.96 mm) contact pitch are available with 2 to 12 positions and are rated for up to 250VAC and up to 10 amps. Breakaway style retainers add the TPA function to secure the contacts in the housing cavity against backing out. Polarization tabs make sure that housing and header are mated correctly.

SL-156 connectors with TPA are modular products, consisting of housing, tin- or gold-plated terminals (contacts) and secondary locking device. During the installation sequence the wire is crimped to the terminal and the terminated wire is inserted into the housing cavity where it locks in place. The new housing design prevents the worker from accidentally inserting the terminal upside down because the cavity can only be loaded in one way.

## ELECTRICAL

- Voltage rating: 250 VAC
- Current rating: 10 A

## MECHANICAL

- Positions: 2 to 12 (single row)
- Wire size: 24 to 18 AWG discrete wire
- Centerline: .156" (3.96 mm)
- Breakaway style TPA 20 positions
- Operating temperature: -55 to 105 °C

## STANDARDS

- CSA approved
- UL recognized

## MATERIALS

- Housing: UL94V-0 rated nylon
- Contacts: Tin-plated Phos Bronze, Gold also available

## SPECIFICATIONS

- Product specification: [108-1049](#)
- Application specification: [114-1021](#)

## KEY FEATURES

- .156" centerline (3.96 mm)
- 2 - 12 positions for discrete wires AWG 24 to 18
- Voltage up to 250 V
- Current up to 10 A
- Locking ramp
- Polarization tabs
- Terminals can only be loaded one way
- 20-position breakaway Terminal Position Assurance (TPA)
- Housing color white

## APPLICATIONS



Household Appliances



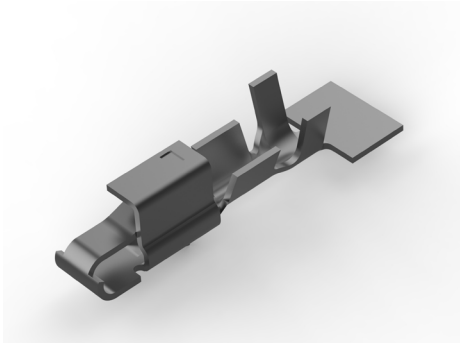
HVAC



Industrial Machinery

PRODUCT OFFERING

Part Number	Description
<a href="#">2-2132074-0</a>	SL-156 Breakaway Contact Retainer (20-Posn)
<a href="#">770476-1</a>	SL-156 Recp Contact Phos Bronze Bright Tin Lead
<a href="#">770476-2</a>	SL-156 Recp Contact Phos Bronze Bright Tin Gold Plated
<a href="#">3-770476-1</a>	SL-156 Recp Contact Phos Bronze Bright Tin RoHS
<a href="#">2132189-2</a>	SL-156 2-Posn Retainer Housing w/Lock Ramp, Tabs
<a href="#">2132189-3</a>	SL-156 3-Posn Retainer Housing w/Lock Ramp, Tabs
<a href="#">2132189-4</a>	SL-156 4-Posn Retainer Housing w/Lock Ramp, Tabs
<a href="#">2132189-5</a>	SL-156 5-Posn Retainer Housing w/Lock Ramp, Tabs
<a href="#">2132189-6</a>	SL-156 6-Posn Retainer Housing w/Lock Ramp, Tabs
<a href="#">2132189-7</a>	SL-156 7-Posn Retainer Housing w/Lock Ramp, Tabs
<a href="#">2132189-8</a>	SL-156 8-Posn Retainer Housing w/Lock Ramp, Tabs
<a href="#">2132189-9</a>	SL-156 9-Posn Retainer Housing w/Lock Ramp, Tabs
<a href="#">1-2132189-0</a>	SL-156 10-Posn Retainer Housing w/Lock Ramp, Tabs
<a href="#">1-2132189-2</a>	SL-156 12-Posn Retainer Housing w/Lock Ramp, Tabs



APPLICATION TOOLING

Part Number	Description
<a href="#">2151033-1</a>	Mechanical Feed, OCEAN, Male Adapter Post, Applicator
<a href="#">90471-1</a>	Extraction Tool

Connect With Us

We make it easy to connect with our experts and are ready to provide all the support you need. Visit [te.com/support](https://te.com/support) to chat with a Product Information Specialist.

TE Connectivity  
Connected Living Solutions

[te.com/mta-connectors](https://te.com/mta-connectors)

TE, TE Connectivity, TE connectivity (logo), and EVERY CONNECTION COUNTS are trademarks owned or licensed by the TE Connectivity plc family of companies. Other product names, logos, and company names mentioned herein may be trademarks of their respective owners.

The information given herein, including drawings, illustrations and schematics which are intended for illustration purposes only, is believed to be reliable. However, TE Connectivity makes no warranties as to its accuracy or completeness and disclaims any liability in connection with its use. TE Connectivity's obligations shall only be as set forth in TE Connectivity's Standard Terms and Conditions of Sale for this product and in no case will TE Connectivity be liable for any incidental, indirect or consequential damages arising out of the sale, resale, use or misuse of the product. Users of TE Connectivity products should make their own evaluation to determine the suitability of each such product for the specific application.