

# HG2G

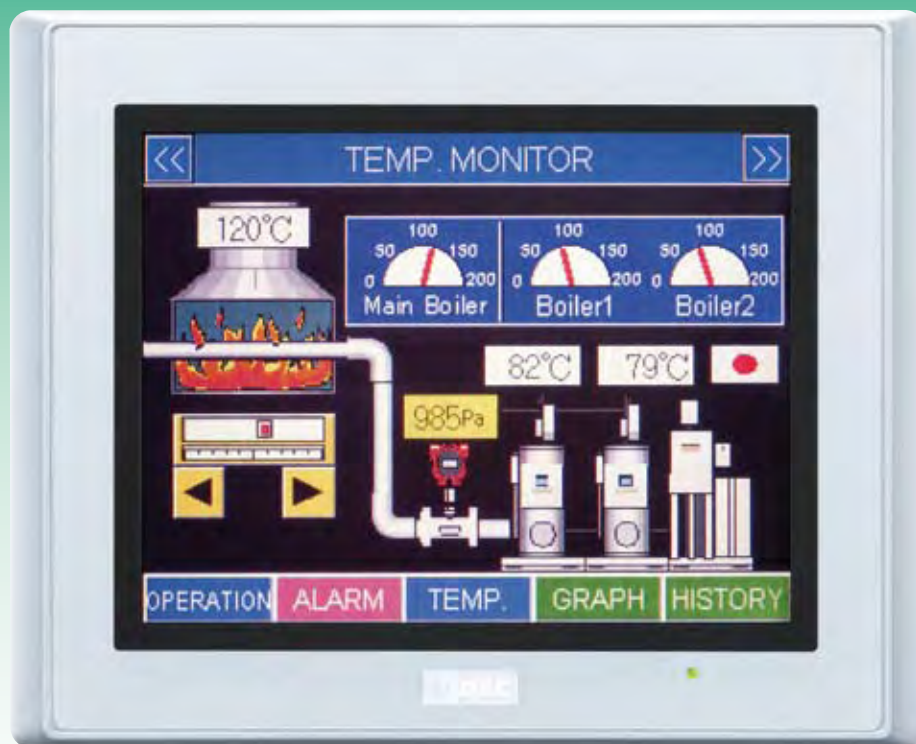
5.7  
inch

## Operator Interface



### *World Class, Super Bright LCD Monitor*

Available with Ethernet (10/100BASE-T) interface and other network communications.



Housing color: Silver



Housing color: Light gray



Housing color: Dark gray

IDEC CORPORATION

**5.7 inch**  
320 × 240 Pixels

# Enhanced visibility and user- Stylish design with 3 different

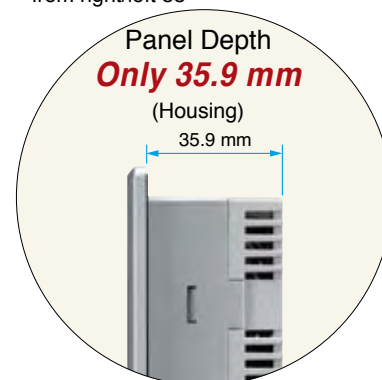
## Super Bright **350 cd/m<sup>2</sup>**\*

High contrast,  
Wide viewing angle

256 colors, Color LCD

Contrast comparison: 1.7 times brighter than  
competitive models

Viewing angle: From top 65°, from bottom 70°,  
from right/left 55°



Housing color: Silver

## Super Bright **500 cd/m<sup>2</sup>**\*

High-quality monochrome

15 brightness levels  
Monochrome LCD

Contrast comparison: 5 times brighter than  
competitive models

Viewing angle: From top 25°, from bottom 45°,  
from left/right 45°.



Housing color: Dark gray

\*Luminance according to LCD manufacturer's specifications

STN Color  
256

STN  
Monochrome  
15 levels

Touch Panel  
Analog

User Memory  
2MB

Serial  
Communication  
RS232C  
RS485 (422)

Ethernet  
10/100  
BASE-T

Thin  
35.9mm  
(Panel Depth)

Body Color  
Light Gray  
Dark Gray  
Silver

CE Marked  
UL/c-UL  
Listed

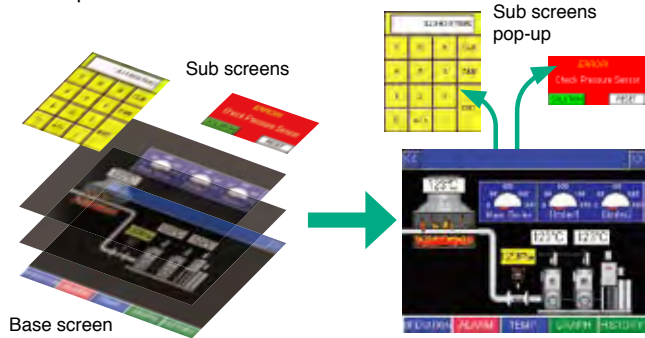
# friendly features. housing colors.

## HG2G Operator Interface

### Easily design and edit screens

**By overlapping the screens, common graphic images can be shared.**

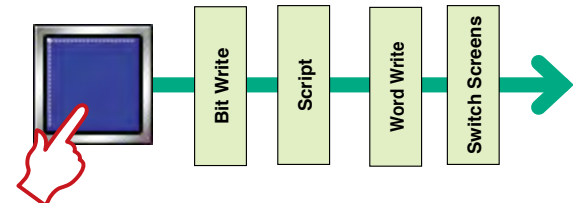
Five base screens can be overlapped onto one base screen and up to three pop-up sub screens can be placed on top. Effective design is possible by creating a layout screen and sharing graphics used in multiple screens.



### Execute several operations using only one button

**Multi-button functionality allows operation of several functions at the same time.**

Up to 32 functions can be set in one button so there is no need to overlap buttons. Bit write, word write, and script commands can be set in one button, reducing design time.



### Complicated operations are strain on the host machine

**Complicated operation can be processed inside the HG2G using script functions.**

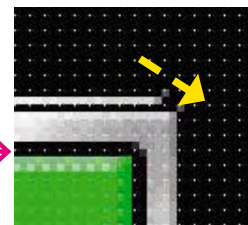
Various operations can be processed inside the HG2G, reducing the strain on the host machine. Conditional statements and functions can be selected and entered from the function list using the script function, allowing beginners to enter functions easily. Syntax check function is also available.

### Flexible screen design

**Button positioning and size can be adjusted.**

The position and size of a touch button can be changed as required.

The touch button can be moved and re-sized in 1-pixel increments.



### Display foreign languages

**Multiple languages can be displayed by using the language change function.**

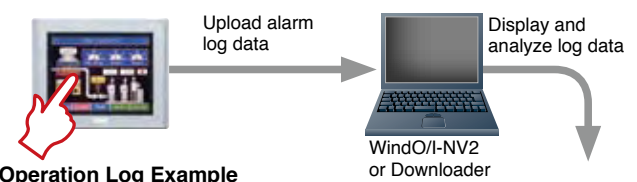
Switch to any of 16 different languages by simple operation. Text can be edited by the text manager of WindO/I-NV2. Text can also be edited using Excel and can be imported using CSV and TEXT files. European, Japanese, Chinese, Taiwanese, Korean, Central European, Baltic, Cyrillic, and Windows fonts can be installed.



### Solve system errors quickly

**Operation log functions and alarm log functions record operational details.**

The Operation Log records information for every operation. This function enables you to check who, when, what, and where an operation was performed. The alarm log function displays an alarm when a system error occurs and stores the log data. These functions help analyze causes and solve problems such as system errors. The log data can be exported as a CSV file.



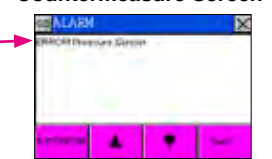
### Operation Log Example

Time	User Name	Screen No.	Event Name	Part Name	Device	Changed to
2009/01/23 01:34:07	—	Base 1	Change Operation Modes	—	—	Run Mode
2009/01/23 01:34:08	—	Base 1	Change Users	—	—	test1
2009/01/23 01:34:08	test1	Base 1	Switch Base Screens	—	—	Base 1
2009/01/23 01:34:13	test1	Base 1	Press Buttons	BitSwitch1	—	—
2009/01/23 01:34:13	test1	Base 1	Write Data to any Devices	—	LM 0	1

### Alarm Log Display



### Countermeasure Screen



- |          |                          |                       |                                    |                                    |                        |                        |
|----------|--------------------------|-----------------------|------------------------------------|------------------------------------|------------------------|------------------------|
| Features | System Software Download | Download via O/I Link | Device Monitor                     | Switching Text Groups              | Alarm Log              | Preventive Maintenance |
|          | Font Download            | Simulation            | Overlapping Screens                | Scripts                            | Logging Data           | Recipe                 |
|          | Download via Ethernet    | Pass-through Function | Pop-up Screen Superimpose Function | Trigger Condition Setting of Parts | Operation Log Function | Password Setting       |



### Ethernet Connection

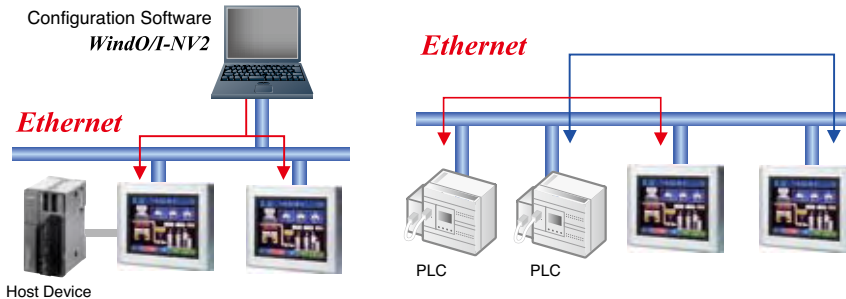
HG2G maintenance is possible using a PC located in a remote location. Communicates with PLCs via host communication.

Screen display data can be changed and data can be analyzed from remote locations using a PC.

Connected to a PLC that can be used via Ethernet. Flexible system architecture. Both 1:1 communication and N:N communication are possible.

(Ethernet Communication Drivers)  
 IDEC: Web Server Unit (FC3/FC4/FC5 series),  
 Mitsubishi: MELSEC-Q/QnA (Ethernet)  
 A-B: Ethernet/IP  
 Modicon: Modbus/TCP  
 Koyo: DirectLogic

When connecting several PLCs, the PLCs must use the same ethernet protocols.



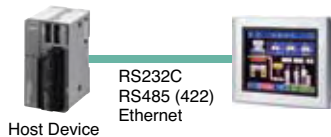
### Serial Connection

Connects to a variety of devices such as PLCs, computer boards, and barcode readers.

#### PLC Link Communication

Serial 1 Ethernet

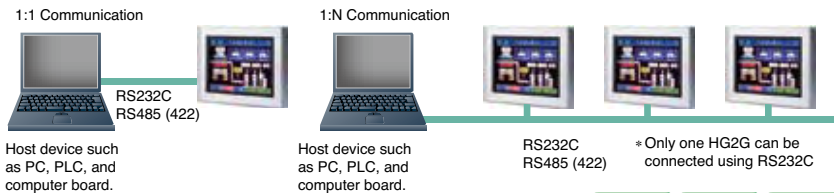
Data can be read from and written to PLC devices, such as relays and registers. Various communication device drivers are available.



#### DM Link Communication

Serial 1

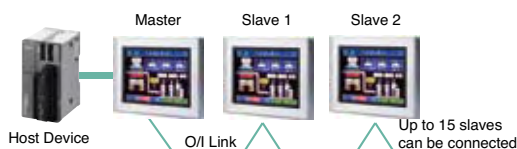
PC, PLC, and computer boards can access the DM link memory in the HG2G to read and write data. 1:1 and 1:N communication systems are possible. Because a proprietary communication protocol is used for the HG2G, the host requires a special program for DM link communication.



#### O/I Link Communication

O/I Link

Up to 16 HG2G units can be connected with the O/I link at a communication speed of 115.2 kbps.

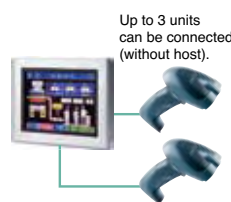


O/I link unit is not required for the HG2G slave. Operator interfaces other than HG2G cannot be connected.

#### User Communication/Sub Host Communication

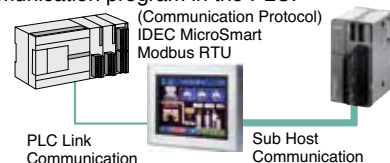
Serial 1 Serial 2 O/I Link

**User Communication**  
 Connect to serial communication devices such as barcode readers.



#### Sub Host Communication

A communication method for reading and writing data from and to devices such as PLC relays and registers. Using Sub Host Communication with PLC Link Communication makes it possible to communicate with two PLCs without making a communication program in the PLC.



### Interface Specification

Ethernet

#### Ethernet Interface

10/100Base-T compliant, communicates with host devices such as a PLC or PC and can be used to download screen data to the HG2G.

Serial 1

#### Serial Interface 1

Communicates to the host using either RS232C or RS485 (422).

Serial 2

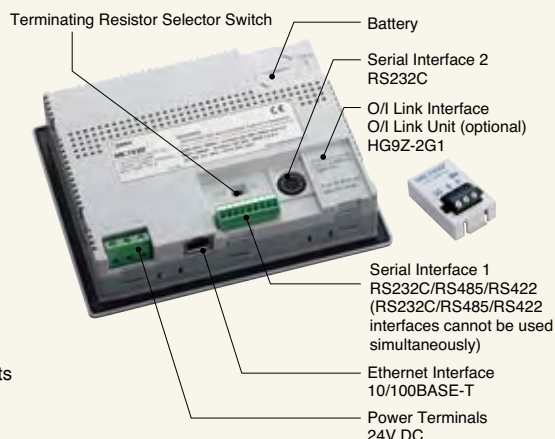
#### Serial Interface 2

Communicates with a PC using RS232C, enabling HG2G maintenance. This port can also be used as an interface for user or sub host communications.

O/I Link

#### O/I Link Interface

By attaching an optional O/I link unit, up to 16 HG2G units can be connected to one host device using the O/I link communication system. High-speed communication of 115.2 kbps



Serial 2

O/I Link

Serial 1

Ethernet

## User-friendly features enable easy graphical screen editing.

### Application Software



Automation Organizer is a complete package software to create system configuration and edit and debug programs for PLCs and operator interfaces. Automation Organizer consists of system configuration software "WindCFG," PLC programming software "WindLDR," and OI touchscreen programming software "WindO/I-NV2."



Automation Organizer  
**WindO/I-NV2**

## OI Touchscreen Programming Software

## Flexible workspace allows for dynamic screen design

### Project Window

Structure of projects: such as screen, project, alarm log, and text managers are easy to recognize and settings are easy to edit.

### Screen List

Created screens can be seen as images, making it easy to open screens that need editing.



### Tag Editor

Device addresses of the connected PLC and HG series are displayed. A tag name can be set to each address and the name can be changed by the user.

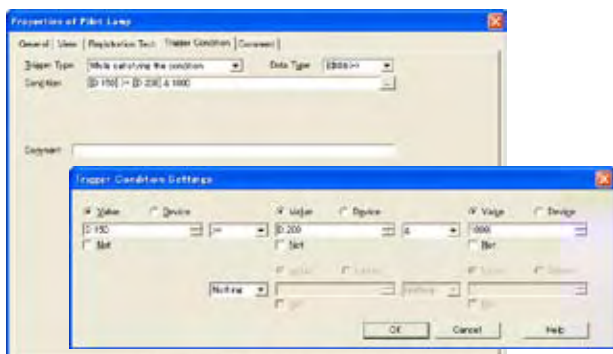
### Part List

Button and lamp parts can be displayed. Layout is possible by using drag and drop methodology.

### Object List

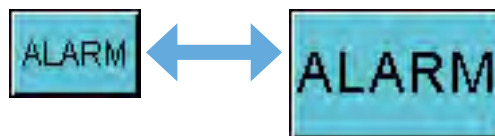
Device, operating condition, and type of command can be read from this list. A property can also be changed by selecting the item.

### Easy Setting of Parts Operating Conditions



The operating conditions of buttons and lamps, bit/word write, and screen switching can be set in the property settings for each part. Lamps can be easily set to turn on, turn off, or flash.

### Automatic Adjustment of Text Size



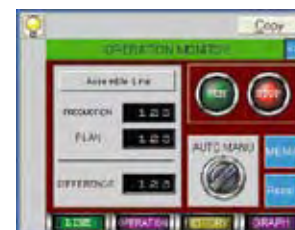
The text size is automatically adjusted according to the size of the object such as a button nameplate. The text size fits in the object even when the language is switched from English to a different language.

### Confirm Images on the WindO/I-NV2 Screen

Easy to confirm the screen image before and after switching screens and texts on the WindO/I-NV2 screen. Powerful screen editing.

Preview (when off)

Preview (when on)



### Select from 5000 images in the image library



Various graphic images can be selected from WindO/I-NV2 configuration software and Symbol Factory, a graphic library containing 5000 images.

### Download Service

Latest versions of WindO/I-NV2, host interface drivers, and user's manual can be downloaded from the IDEC website. Update your HG2G system software by downloading the latest functions using WindO/I-NV2.

<http://www.idec.com/download>

# HG2G Operator Interface

**Brightest LCD in its class.**

**Can be used with various interfaces including Ethernet.**

- Super-bright LCD.  
Can be seen clearly—even in bright locations.
- Ethernet communication is available.
- Easy system configuration with various communication systems, such as PLC link communication.
- Easy-to-use design tool WindO/I-NV2
- Slim body style—only 35.9mm deep behind the panel (housing)
- Components can be laid out easily on the analog touch panel.
- Light gray, dark gray, and silver housing colors are available.
- Multi-lingual fonts can be displayed by switching text groups.
- Operation log function is provided.



## Types

Display Screen	Operation Type	Maintenance Interface	Host Interface	Ethernet Interface	Housing/Bezel Color	Type No.	Remarks
5.7-inch STN monochrome LCD 15 shades	Analog switch	RS232C	RS232C/485 (422) Detachable 9-pin terminal block	With	Light gray	HG2G-SB22TF-W	CE
					Dark gray	HG2G-SB22TF-B	
					Silver	HG2G-SB22TF-S	
Without				Light gray	HG2G-SB22VF-W		
				Dark gray	HG2G-SB22VF-B		
				Silver	HG2G-SB22VF-S		
5.7-inch STN color LCD 256 colors				With	Light gray	HG2G-SS22TF-W	
					Dark gray	HG2G-SS22TF-B	
					Silver	HG2G-SS22TF-S	
				Without	Light gray	HG2G-SS22VF-W	
					Dark gray	HG2G-SS22VF-B	
					Silver	HG2G-SS22VF-S	

## • Options

Name	Ordering Type No.	Package Quantity	Description
Protective Sheet	HG9Z-2D2	5	For HG2G
PLC Connection Cable For IDEC MicroSmart (5m)	HG9Z-XC275	1	Mini DIN 8-pin
PLC Connection Cable For IDEC MicroSmart (2.4m)	FC2A-KP1C	1	Mini DIN 8-pin
O/I Link Unit	HG9Z-2G1	1	Communication unit for O/I link
Maintenance Cable	HG9Z-XCM22	1	Dsub 9-pin (socket) (2m long) Computer link cable 4C (FC2A-KC4C) for IDEC's MicroSmart and OpenNet Controller is also compatible.
Application Software "Automation Organizer" (CD) (English/Japanese/Chinese)	SW1A-W1C	1	Complete package includes Wind CFG system configuration software, WindLDR PLC programming software, and WindO/I-NV2 OI Touchscreen programming software. PDF files of English/Japanese/Chinese manuals are stored on the CD.
Manual "WindO/I-NV2"	HG9Y-B1119	1	English

## • Replacement Parts

Name	Type No.	Ordering Type No.	Package Quantity	Description
Mounting Clip	SLD-K02	SLD-K02PN10	10	Four clips are supplied with HG2G.
Replacement Battery	HG9Z-XR1	HG9Z-XR1	1	Lithium battery CR2032 (one battery is supplied with HG2G)
Host communication plug	HG9Z-XT09	HG9Z-XT09	1	One plug is supplied with HG2G.



## General Specifications

Rated Power Voltage	24V DC
Power Voltage Range	20.4 to 28.8V DC
Power Consumption	10W maximum
Allowable Momentary Power Interruption	10 ms maximum
Inrush Current	20A maximum
Dielectric Strength	1000V AC, 10 mA, 1 minute between power and FG terminals
Insulation Resistance	50 MΩ minimum between power and FG terminals (500V DC megger)
Operating Temperature	0 to 50°C (no freezing)
Operating Humidity	10 to 90% RH (no condensation)
Storage Temperature	-20 to +60°C (no freezing)
Storage Humidity	10 to 90% RH (no condensation)
Pollution Degree	2 (IEC 60664-1)
Vibration Resistance	5 to 9 Hz amplitude 3.5 mm, 9 to 150 Hz, acceleration 9.8 m/s <sup>2</sup> 10 cycles (100 minutes) on each of three mutually perpendicular axes (IEC60068-2-6)
Shock Resistance	147 m/s <sup>2</sup> , 11 ms 5 shocks on each of three mutually perpendicular axes (IEC60062-2-27)
Noise Immunity	Fast transient/burst test, Common mode: Level 3, Power terminals: ±2 kV, Communication line: ±1 kV (IEC 61000-4-4)
Electrostatic Discharge	ESD-3 (RH-1), Level 3 (contact ±6 kV, air ±8 kV) (IEC 61000-4-2)
Corrosion Immunity	Free from corrosive gases
Mounting	Panel mounting
Degree of Protection	IP65 (operator)
Dimensions	167.2W × 134.7H × 40.9D mm
Weight (approx.)	500g

• Do not use the HG2G in an environment subject to strong ultraviolet rays, otherwise the LCD quality will deteriorate.

## Display Specifications

Display Color		Monochrome	Color
Effective Display Area		Monochrome STN	Color STN
Color/Shade		Monochrome 15 shades	256 colors
Effective Display Area		115.2W × 86.4H mm	
Display Resolution		320W × 240H pixels	
Contrast Adjustment		Possible in steps	
Backlight		Cold-cathode tube	
Backlight Life		75,000 hours nominal (Note)	
Backlight Control		Automatic OFF	
Backlight Replacement		Impossible (by IDEC only)	
Display Character Size	1/4 size	8 × 8 pixels (Western European language: ISO 8859-1, Central European language: ANSI 1250, Baltic: ANSI 1257, Cyrillic: ANSI1251, Japanese katakana and symbols: JIS 8-bit code)	
	1/2 size	8 × 16 pixels (Western European language ISO 8859-1, Central European language: ANSI 1250, Baltic: ANSI 1257, Cyrillic: ANSI1251, Japanese katakana and symbols: JIS 8-bit code)	
	Full size	16 × 16 pixels (Japanese JIS first and second level characters, simplified Chinese, traditional Chinese, Korean)	
	Double size	32 × 32 pixels (Japanese JIS first level characters, Mincho font)	
Quantity of Characters	1/4 size	40 characters × 30 lines	
	1/2 size	40 characters × 15 lines	
	Full size	20 characters × 15 lines	
	Double size	10 characters × 7 lines	
Character Magnification		0.5, 1, 2, 3, 4, and 8 vertically and horizontally	
Character Attribute		Blink (1 or 0.5 sec period), reverse, bold, shadowed	
Graphics Type		Straight line, polyline, rectangle, circle, ellipse, arc, pie, equilateral polygons (3, 4, 5, 6, 8), paint, bitmap image	
Window Display		3 popup screens + 1 system screen	

Note: The backlight life refers to the time until the surface brightness reduces by half after using continuously at room temperatures.

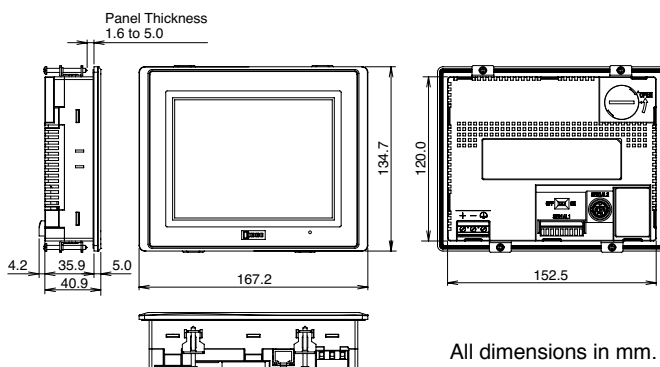
## General Specifications

Switching Element	Analog resistive membrane
Operating Force	0.2 to 0.8N
Mechanical Life	1,000,000 operations
Acknowledge Sound	Electronic buzzer

## Function Specifications

Screen Types	Base screen, sub screen, system screen
No. of Screens	Base screen: 3000 max. Sub screen: 3015 max.
User Memory	2 MB (including expansion fonts)
Parts	Bit Button, Word Button, Goto Screen, Print Button, Key Button, Multi Button, Keypad, Selector Switch, Potentiometer, Numerical Input, Character Input, Pilot Lamp, Multi-State Lamp, Picture Display, Message Display, Message Switching Display, Alarm List Display, Alarm Log Display, Numerical Display, Bar Graph, Trend Chart, Pie Chart, Meter, Calendar, Bit Write Command, Word Write Command, Goto Screen Command, Print Command, Screen Script Command, Multi Command, Timer
Calendar	Year, Month, Day, Hour, Min., Sec., Day of Week ±60 sec per month (at 25 °C)
Power Failure Backup Data	Calendar, log data, keep internal relay, keep internal register
Battery Life	4 years (at 25°C)

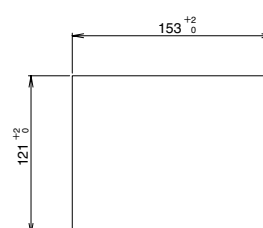
## Dimensions



## Interface Specifications

Serial Interface 1	RS232C	Electrical Characteristics	EIA RS232C compliant
		Transmission Speed	1200, 2400, 4800, 9600, 19200, 38400, 57600, 115200 bps
		Synchronization	Asynchronous
		Communication Method	Half or full duplex
		Control System	Hardware control or none
		Connector	Detachable 9-pin terminal block
Serial Interface 2	RS485/RS422	Electrical Characteristics	EIA RS485 (422) compliant
		Transmission Speed	1200, 2400, 4800, 9600, 19200, 38400, 57600, 115200, 187500 bps
		Synchronization	Asynchronous
		Communication Method	Half or full duplex
		Control System	Hardware control or none
		Connector	Detachable 9-pin terminal block
Serial Interface 2	EIA RS232C	Electrical Characteristics	EIA RS232C compliant
		Transmission Speed	9600, 19200, 38400, 57600, 115200 bps
		Synchronization	Asynchronous
		Communication Method	Half duplex, proprietary protocol
		Connector	Mini DIN 8-pin connector
O/I Link Communication	EIA RS485	Electrical Characteristics	EIA RS485 compliant
		Transmission Speed	19200, 38400, 57600, 115200 bps
		Synchronization	Asynchronous
		Communication Method	Half duplex, proprietary protocol
		Connector	3-pin terminal block
Ethernet	IEEE802.3 (10/100BASE-T)	Interface	IEEE802.3 (10/100BASE-T) compliant
		Connector	Modular connector (RJ-45)

## Panel Cut-out



- Install the HG2G into a panel cut-out by tightening the four mounting clips to a torque of 0.12 to 0.15 N·m (recommended tightening torque: 0.14 N·m).

Note: Do not tighten with excessive force, otherwise the HG2G and screen will be distorted. Also waterproof characteristics may be lost.

## Compatible PLCs

Manufacturer	Series	Applicable CPU Unit	CPU Connection	Link Unit	Ethernet
IDEC	OpenNet Controller	FC3A-CP2	✓		✓
	MicroSmart	FC4A-C10R2	✓		✓
		FC4A-C16R2/C24R2, FC4A-D20K3/D20S3, FC4A-D20RK1/D20RS1, FC4A-D40K3/D40S3	✓	✓	✓
		FC5A-C10R2/C16R2, FC5A-C24R2, FC5A-C10R2C/C16R2C, FC5A-C24R2C	✓	✓	✓
Mitsubishi	MELSEC-A	FC5A-D16RK1/D16RS1, FC5A-D32K3/D32S3	✓	✓	✓
		A1N, A2N, A3N, A1SH		✓	
		A2CPCUC24	✓		
	MELSEC-QnA	A0J2, A0J2H, A2A, A3A, A2U, A3U, A4U, A2US, A2USH-S1		✓	
		Q4ACPU, Q4ARCPU, Q3ACPU, Q2ACPU, Q2ACPU-S1		✓	✓
		Q2ASHCPU, Q2ASHCPU-S1, Q2ASCPU, Q2ASCPU-S1		✓	✓
	MELSEC-Q	Q00CPU, Q01CPU	✓		✓
		Q02CPU, Q02HCPU	✓	✓	✓
		Q06HCPU, Q12PHCPU, Q25HCPU		✓	✓
	MELSEC-FX	Q00JCPU			✓
		FX0, FX0N, FX1, FX2, FX2C, FX-0S, FX-1S	✓		
		FX2N, FX2NC, FX1N, FX1NC	✓	✓	
OMRON	SYSMAC-C	FX3UC, FX3U	✓	✓	
		C500, C500F, C1000H, C1000HF, C2000, C2000H, C200HS, C200HE, C200HG, C200HX, C120, C120F		✓	
		C20H, C28H, C40H, C60H, CQM1H, C200HS-CPU21/23/31/33, C200HE-CPU42, C200HG-CPU43/63, C200HX-CPU44/64	✓		
		CPM1, CPM1A		✓	
		CPM2A	✓	✓	
		CS1G, CS1H	✓	✓	
		CJ1M, CJ1H, CJ1G	✓		
		CP1H		✓	
	PLC-5	Any PLC-5 models connectable to 1770-KF2		✓	
		Any PLC-5	✓		
Allen-Bradley	SLC-500	PLC-5, PLC-5E			✓
		SLC5/03, SLC5/04	✓		✓
	MicroLogix	SLC5/05			✓
		MicroLogix1000, MicroLogix1100, MicroLogix1200, MicroLogix1500	✓		✓
	ControlLogix	ControlLogix5550, ControlLogix5555			
		1768CompactLogix	✓		
	CompactLogix	1769CompactLogix	✓		
		1794-L33, 1794-L34	✓		
	FlexLogix				
SIEMENS	S7-200	CPU212, CPU214, CPU215, CPU216, CPU221, CPU222, CPU224, CPU226, CPU224XP, CPU226XM	✓		
		CPU313, CPU314, CPU315, CPU315-2DP, CPU316, CPU318		✓	
	S7-300	CPU313C-2PiP	✓		
	S7-400	CPU412, CPU414, CPU416, CPU416F-2, CPU417		✓	


Manufacturer	Series	CPU Unit	CPU Connection	Link Unit	Ethernet
Keyence	KV-700, KV-1000	KV-700, KV-1000	✓	✓	
	KZ	KZ-10, 16, 20, 40, 80	✓		
	KV	KV-10, 16, 24, 40	✓		
Sharp	New Satellite JW	JW-10	✓		
		JW-21CU, JW-31CUH/H1, JW-50CU/CUH		✓	
		JW-22CU, JW-32CUH/H1, JW-33CUH/H1/H2/H3, JW-70CU/CUH, JW-100CU/CUH	✓	✓	
Hitachi	S10mini	S10mini	✓	✓	
	S10V	LQP510			
JTEKT (TOYODA)	TOYOPUC-PC2J	PC2J	✓		
	TOYOPUC-PC3J	PC3J, PC3JD, PC3JG	✓		
Toshiba	TC200	TC3-13B1	✓		
	TCmini	TC03-01, TC03-02			
GE Fanuc Automation	Series 90-30	CPU311, CPU313, CPU323	✓		
		CPU331, CPU341, CPU350, CPU351, CPU352, CPU360, CPU363, CPU364, CPU374	✓	✓	
		VersaMax Nano Micro (14, 23, 28 points)	✓		
Schneider	Twido	TWDLCAA16DRF, TWDLCAA24DRF		✓	
	Momentum	171CC96020			✓
Panasonic	FP series	FP0, FP10, FP10SH, FP1, FP2, FP2SH, FPΣ	✓		
Yaskawa	Machine Controller	MP920, MP930, MP2300	✓	✓	
Koyo	DirectLOGIC05	DL05			✓
		DL06			
		D2-240, D2-250, D2-250-1, D2-260			
	KOSTAC SZ	SZ-4	✓		
		SU-6H	✓		
		SU-5E, SU-6B, SU-5M, SU-6M	✓	✓	✓
FANUC	Power Mate	Power Mate-MODEL D	✓		
	Series	16i, 160i, 18i, 180i, 30i, 31i, 32i			
Yokogawa	FACTORY ACE	FA-M3 (F3SP20, F3SP28, F3SP30, F3FP36, F3BP20, F3BP30)		✓	
		FA-M3 (F3SP05, F3SP21, F3SP25, F3SP35, F3SP38, F3SP53, F3SP58)	✓	✓	
Fuji	FREX-PC	NB1, NB2, NB3, NJ-CPU-E4, NJ-CPU-A8, NJ-CPU-B16, NS	✓	✓	
	MICREX-F	F30, F50, F50H, F55, F60, F70, F70S, F80H, F81, F120H, F120S, F140S, F150S, F250		✓	
Toshiba	PROSEC T Series	T1-16, T1-28, T1-40, T1-40S, PU234E	✓	✓	
		PU224, PU215N, PU235N, PU245N, PU315, PU325, PU325H, PU326H	✓		
	V Series	PU672T, PU662T, PU612E, L1PU11H, L1PU12H, S2PU82, S2PU72, S2PU32, S2PU22, S3PU65, S3PU55, S3PU45, S3PU21	✓		
LS Industrial Systems	MASTER-K	K10S1, K120S	✓		
		K80S, K200S	✓	✓	
		K300S		✓	

\* Ethernet link unit may be necessary for some PLCs.

The updated information of the compatible PLCs can be found at the following website.

<http://www.idec.com/download>

Windows and Excel are registered trademarks of Microsoft Corporation, USA in the USA and other countries.

	<b>Safety Precautions</b>	Read the safety precautions described in the user's manual to make sure of correct operation of the HG2G.
-------------------------------------------------------------------------------------	---------------------------	-----------------------------------------------------------------------------------------------------------

Specifications and other descriptions in this catalog are subject to change without notice.

	<b>IDEC CORPORATION</b> 7-31, Nishi-Miyahara 1-Chome, Yodogawa-ku, Osaka 532-8550, Japan Tel: +81-6-6398-2571, Fax: +81-6-6392-9731 E-mail: marketing@idec.co.jp	
	<b>IDEC CORPORATION (USA)</b> 1175 Elko Drive, Sunnyvale, CA 94089-2209, USA Tel: +1-408-747-0550 / (800) 262-IDEC (4332) Fax: +1-408-744-9055 / (800) 635-6246 E-mail: opencontact@idec.com	<b>IDEC ELEKTROTECHNIK GmbH</b> Wendenstrasse 331, 20537 Hamburg, Germany Tel: +49-40-25 30 54 - 0, Fax: +49-40-25 30 54 - 24 E-mail: service@idec.de
	<b>IDEC CANADA LIMITED</b> 3155 Pepper Mill Court, Unit 4, Mississauga, Ontario, L5L 4X7, Canada Tel: +1-905-890-8561, Toll Free: (888) 317-4332 Fax: +1-905-890-8562 E-mail: sales@ca.idec.com	<b>IDEC (SHANGHAI) CORPORATION</b> Room 608-609, 6F, Gangtai Plaza, No. 700, Yan'an East Road, Shanghai 200001, PRC Tel: +86-21-5353-1000, Fax: +86-21-5353-1263 E-mail: idec@cn.idec.com
	<b>IDEC AUSTRALIA PTY. LTD.</b> 2/3 Macro Court, Rowville, Victoria 3178, Australia Tel: +61-3-9763-3244, Toll Free: 1800-68-4332 Fax: +61-3-9763-3255 E-mail: sales@au.idec.com	<b>IDEC (BEIJING) CORPORATION</b> Room 211B, Tower B, The Grand Pacific Building, 8A Guanghua Road, Chaoyang District, Beijing 100026, PRC Tel: +86-10-6581-6131, Fax: +86-10-6581-5119
<b>IDEC ELECTRONICS LIMITED</b> Unit 2, Beechwood, Chineham Business Park, Basingstoke, Hampshire RG24 8WA, UK Tel: +44-1256-321000, Fax: +44-1256-327755 E-mail: sales@uk.idec.com		<b>IDEC (SHENZHEN) CORPORATION</b> Unit AB-3B2, Tian Xiang Building, Tian'an Cyber Park, Fu Tian District, Shenzhen, Guang Dong 518040, PRC Tel: +86-755-8356-2977, Fax: +86-755-8356-2944
<b>www.idec.com</b> (090526)		<b>IDEC IZUMI (H.K.) CO., LTD.</b> Units 11-15, Level 27, Tower 1, Millennium City 1, 388 Kwun Tong Road, Kwun Tong, Kowloon, Hong Kong Tel: +852-2803-8989, Fax: +852-2565-0171 E-mail: info@hk.idec.com <b>IDEC TAIWAN CORPORATION</b> 8F-1, No. 79, Hsin Tai Wu Road, Sec. 1, Hsi-Chih, Taipei County, Taiwan Tel: +886-2-2698-3929, Fax: +886-2-2698-3931 E-mail: service@tw.idec.com <b>IDEC IZUMI ASIA PTE. LTD.</b> No. 31, Tannery Lane #05-01, HB Centre 2, Singapore 347788 Tel: +65-6746-1155, Fax: +65-6844-5995 E-mail: info@sg.idec.com