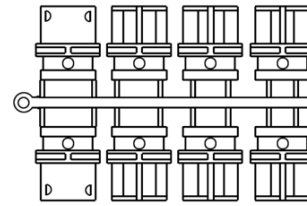
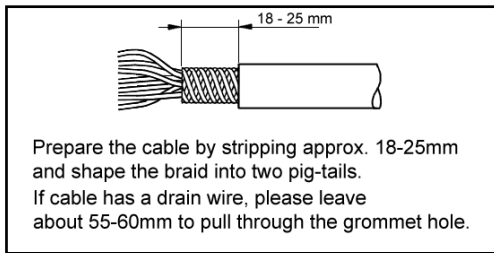
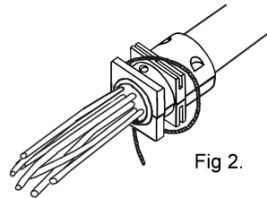
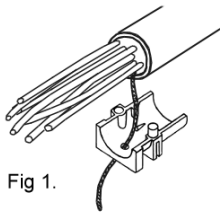


Assembly Instruction MHDTZK / MHD45ZK RA / RAHI



Select the ferrule halves that most closely match the diameter of the cable.
(The ferrule halves do not need to match)



Foil Cable

Insert the wire through the hole in one of the two ferrule halves as shown in Fig 1.
Assemble the two halves around the cable and make sure that the insulation runs the full length of the ferrule, then complete as shown in Fig 2.

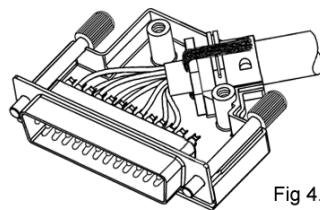
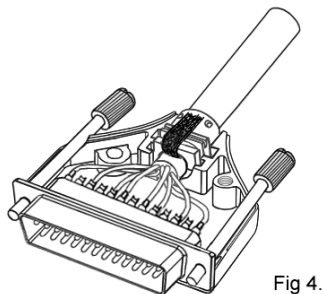
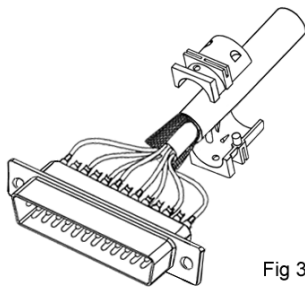
Loop the earth wire recess as shown, preferably in a "knot".

The earth wire can be insulated and extended to a contact on the connector if required.

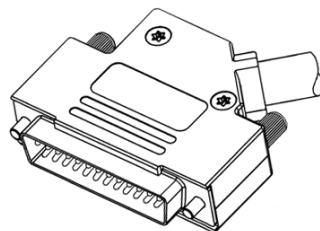
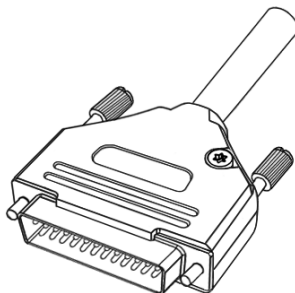
Braided Cable

For heavily braided cables, pigtail the braid and turn it back over the ferrule as shown in Fig 3.

For light braided cables, pigtail the braid and turn it back over the ferrule in one direction only.



Place the assembly into the hood half as shown in Fig 4.



Complete the assembly by putting the second hood half over the assembly, and tighten with accompanied screw mounting set.
Recommended Torque is 150 - 200 Ncm