

PART NUMBER CODING

SFH213-PP_C-D_-ID-BK

COLOR

BK= BLACK

NUMBER OF POSITIONS

(CONTACTS PER ROW)

PLATING

(SEE PLATING TABLE)

PLATING TABLE

CONTACT SURFACE

P = GOLD FLASH

V = GOLD FLASH

K = .000015" GOLD

J = .000015" GOLD

E = .000100" PURE TIN, MATTE

TERMINATION

GOLD FLASH

NICKEL

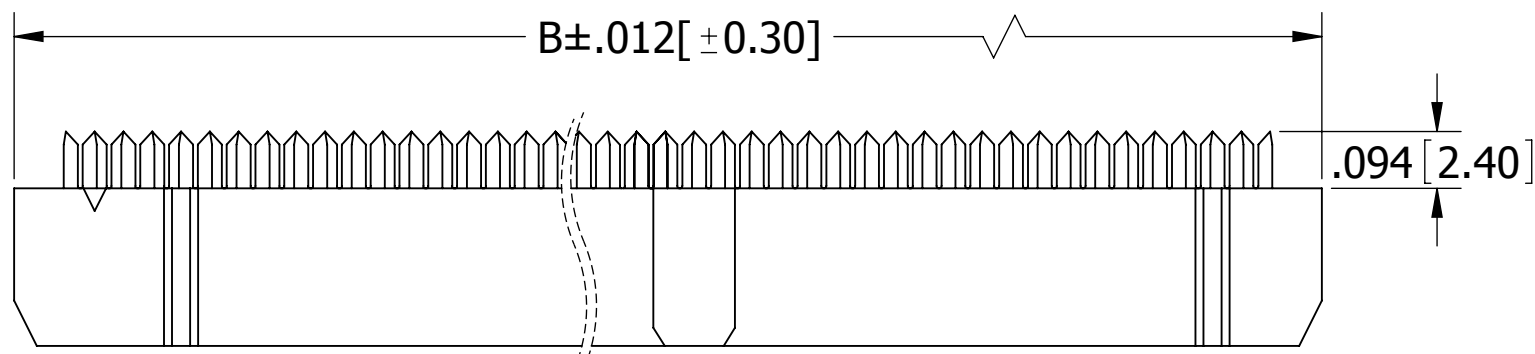
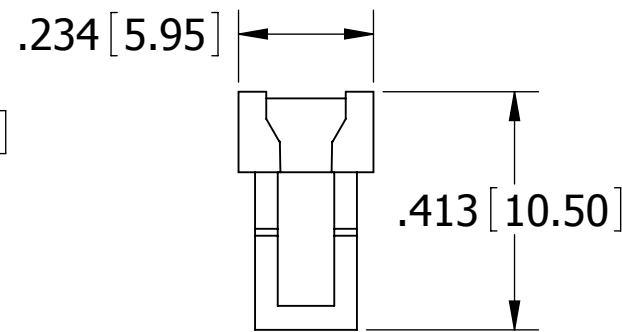
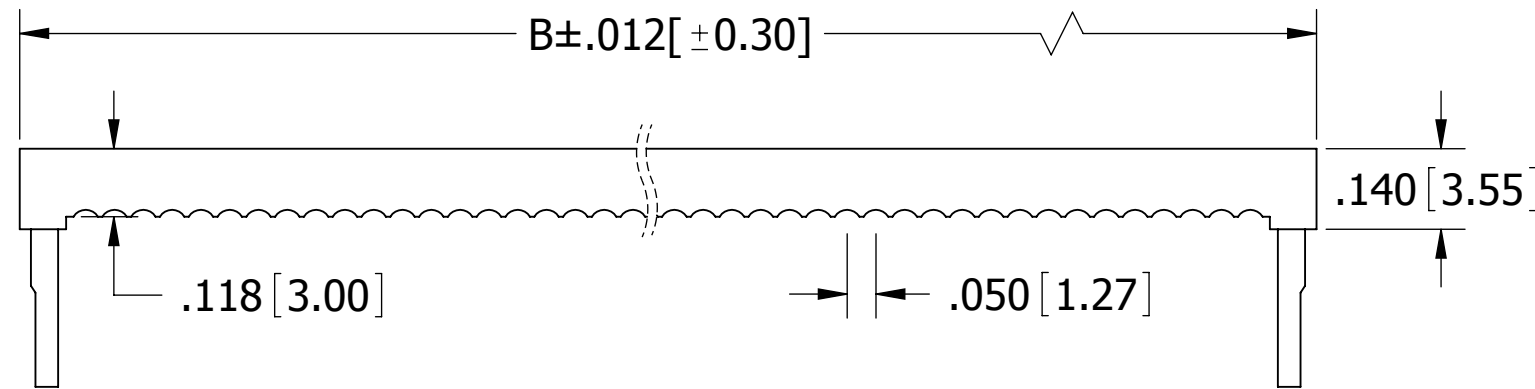
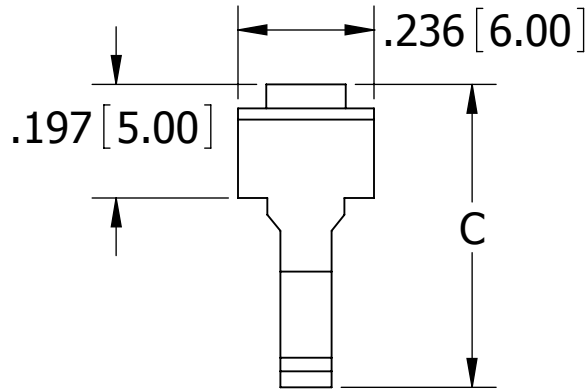
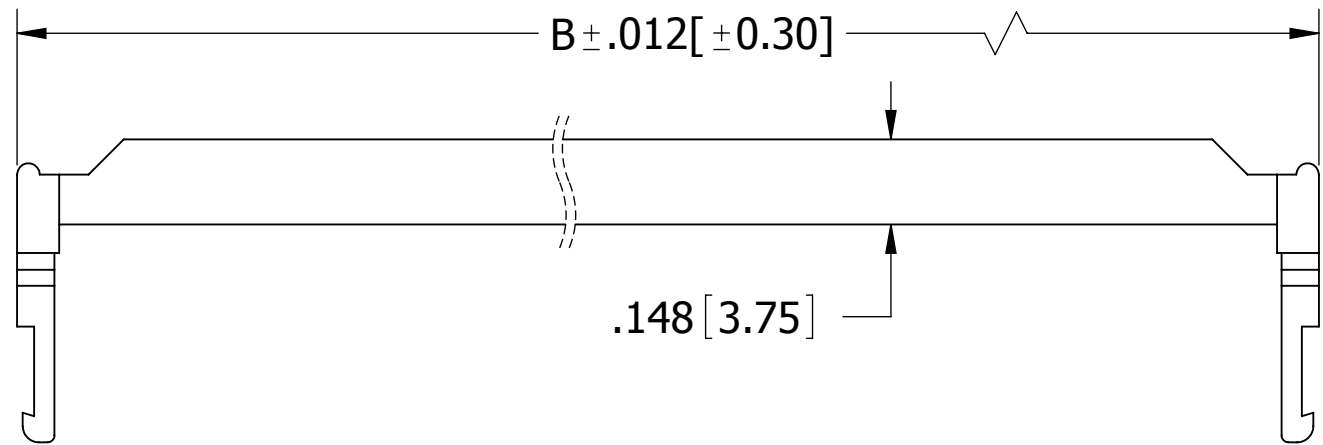
NICKEL

GOLD FLASH

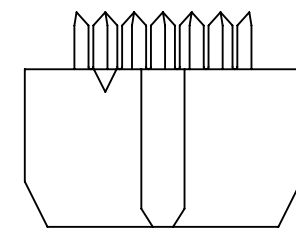
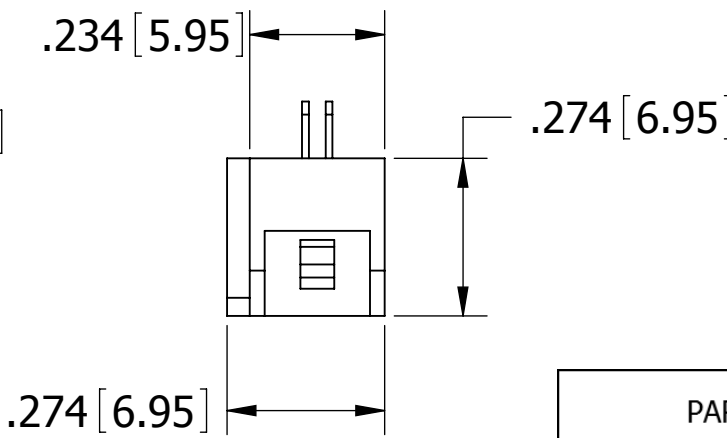
.000100" PURE TIN, MATTE

REVISIONS

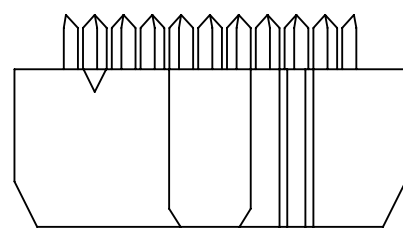
REV.	ECO. NO	DESCRIPTION	DATE	BY
A	1930	INITIAL RELEASE	3/17/2009	JH
B	2159	UPDATE NOTE 10 FOR FLAT RIBBON CABLE SPEC	07/05/2010	LH
C	3374	UPDATE DIMENSION TABLE ' C ' OF 03 AND 04 POSITION .526[13.35] (WAS .516[13.10]), REMOVE 30 AND 32 POSITION OF DIMENSION .047[1.20] ON PAGE 2	02/01/2015	LH



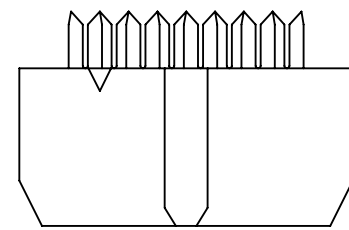
(POSITION 07 THRU 25)



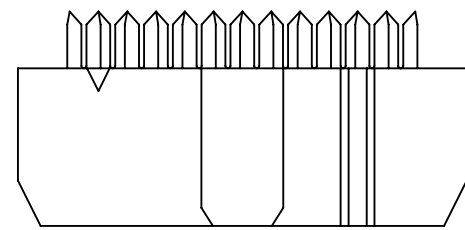
(POSITION 03)



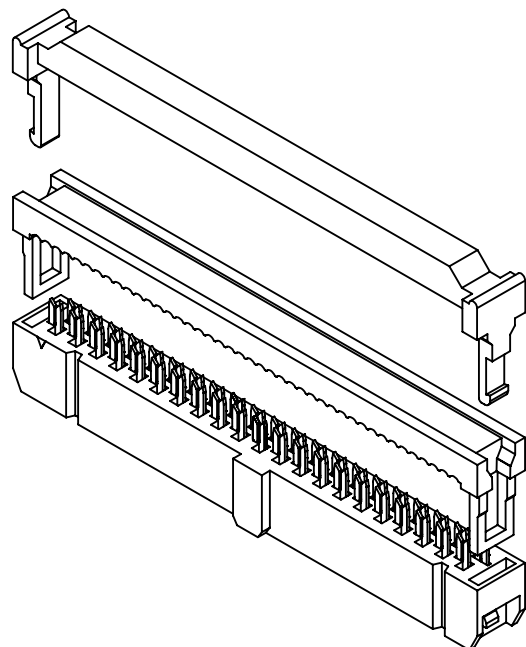
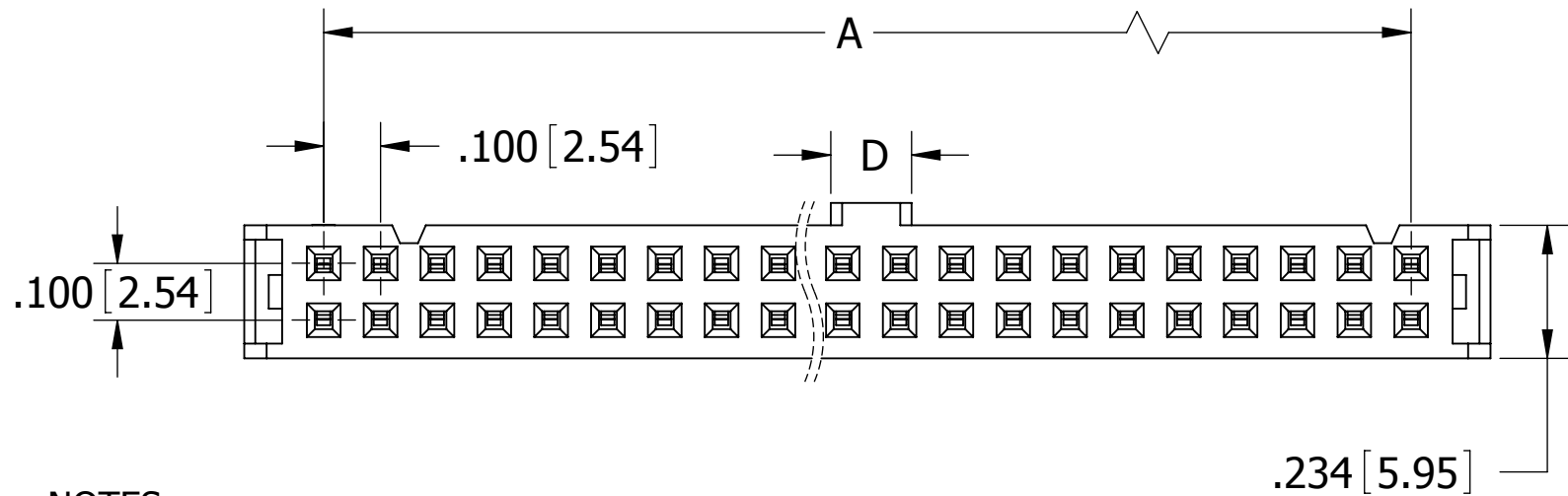
(POSITION 05)



(POSITION 04)

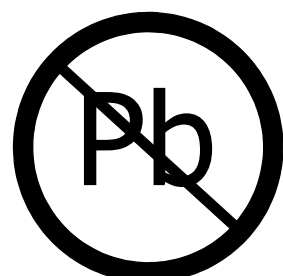


(POSITION 06)



NOTES:

1. INSULATOR MATERIAL: PBT 30% GLASS FIBER.
2. CONTACT MATERIAL: PHOSPHOR BRONZE.
3. OPERATING TEMPERATURE: -40°C TO +105°C.
4. UL FLAMMABILITY RATING: 94V-0.
5. CURRENT RATING: 1 AMP PER CONTACT.
6. INSULATION RESISTANCE: 3,000 MEGOMHS MIN.
7. CONTACT RESISTANCE: 30m OHMS MAX.
8. DIELECTRIC WITHSTANDING: 500 V AC.
9. MATES WITH SBH11 SERIES
10. FOR .050"[1.27mm] PITCH FLAT RIBBON CABLE, 26 - 28 AWG WIRE RANGE.



UNLESS OTHERWISE SPECIFIED:
DIMENSIONS ARE IN INCHES [MM]

TOLERANCES:

ANGULAR: ± 30°

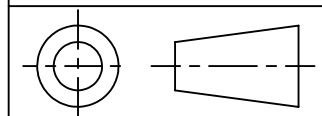
DECIMALS

.XX= ± .012 [.3]
.XXX= ± .008 [.20]
.XXXX= ± .0040 [.100]

DRAWN DATE NAME

3/24/2009 JH

THE INFORMATION HEREIN CONTAINS
PROPRIETARY INFORMATION OF
SULLINS ELECTRONICS AND IS NOT
TO BE REPRODUCED, USED OR
DISCLOSED TO OTHERS FOR ANY
PURPOSE EXCEPT AS SPECIFICALLY
AUTHORIZED IN WRITING BY AN
OFFICER OF SULLINS ELECTRONICS.

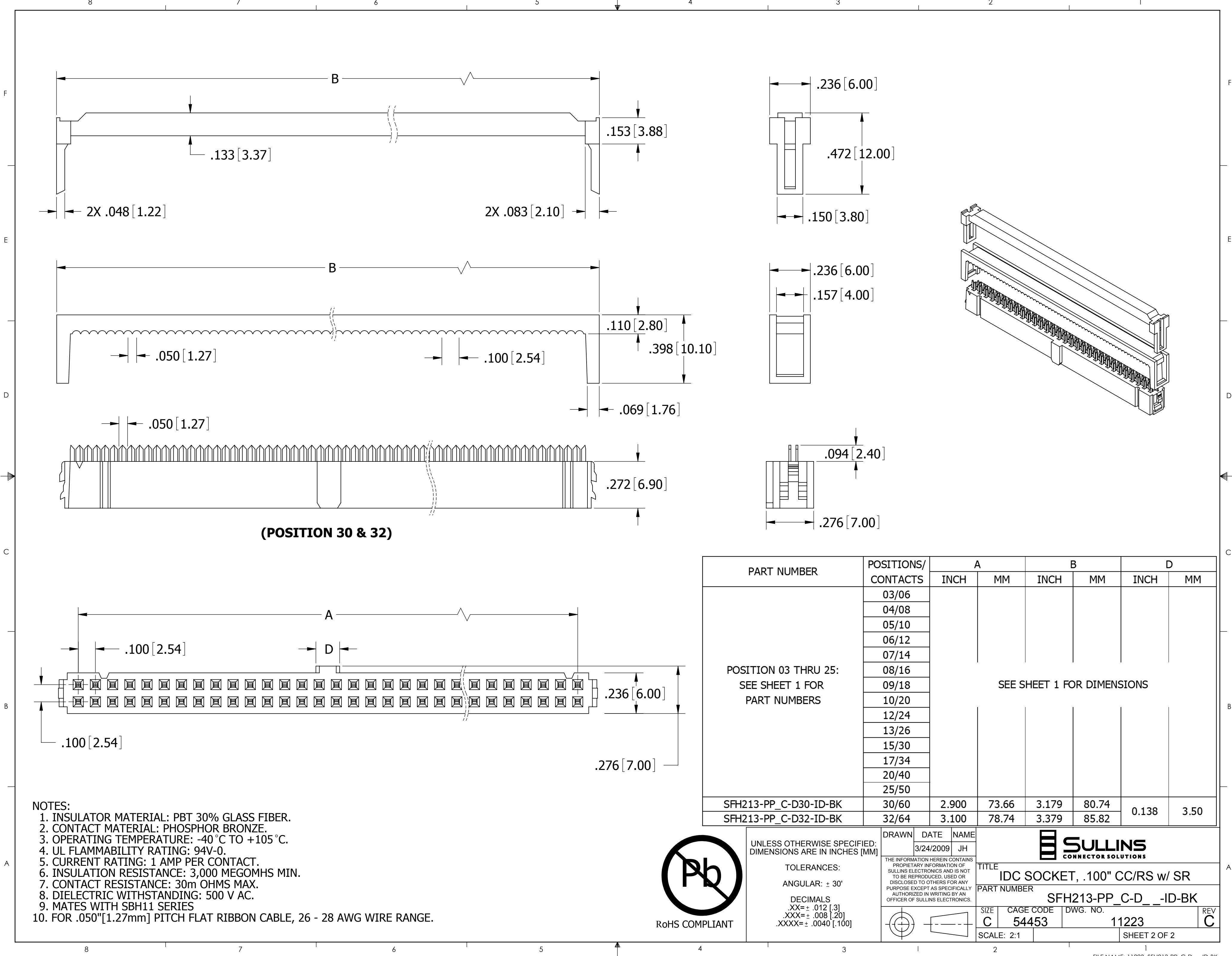


TITLE
IDC SOCKET .100" CC/RS, w/ SR

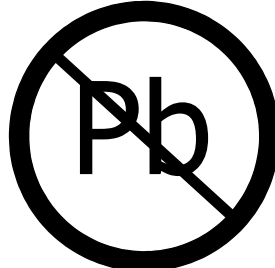
PART NUMBER
SFH213-PP_C-D_-ID-BK

SIZE CAGE CODE DWG. NO. REV
C 54453 11223 C

SCALE: 2:1 SHEET 1 OF 2



PART NUMBER	POSITIONS/ CONTACTS	A		B		D	
		INCH	MM	INCH	MM	INCH	MM
POSITION 03 THRU 25: SEE SHEET 1 FOR PART NUMBERS	03/06	SEE SHEET 1 FOR DIMENSIONS					
	04/08						
	05/10						
	06/12						
	07/14						
	08/16						
	09/18						
	10/20						
	12/24						
	13/26						
	15/30						
	17/34						
	20/40						
	25/50						
SFH213-PP_C-D30-ID-BK	30/60	2.900	73.66	3.179	80.74	0.138	3.50
SFH213-PP_C-D32-ID-BK	32/64	3.100	78.74	3.379	85.82		



RoHS COMPLIANT

UNLESS OTHERWISE SPECIFIED:
DIMENSIONS ARE IN INCHES [MM]

TOLERANCES:

ANGULAR: ± 30°

DECIMALS

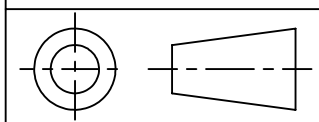
.XX=± .012 [3]

.XXX=± .008 [20]

.XXXX=± .0040 [100]

DRAWN DATE NAME
3/24/2009 JH

THE INFORMATION HEREIN CONTAINS
PROPRIETARY INFORMATION OF
SULLINS ELECTRONICS AND IS NOT
TO BE REPRODUCED, USED OR
DISCLOSED TO OTHERS FOR ANY
PURPOSE EXCEPT AS SPECIFICALLY
AUTHORIZED IN WRITING BY AN
OFFICER OF SULLINS ELECTRONICS.



SULLINS
CONNECTOR SOLUTIONS

TITLE
IDC SOCKET, .100" CC/RS w/ SR

PART NUMBER
SFH213-PP_C-D__-ID-BK

SIZE CAGE CODE DWG. NO. REV
C 54453 11223 C

SCALE: 2:1 SHEET 2 OF 2