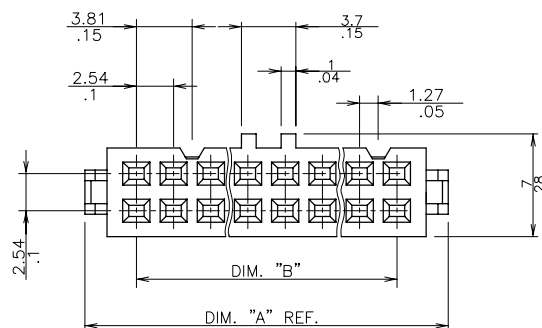


6.1 MAX
.24 MAX

- NOTE:
- 1 MATERIAL: BASE AND COVER: 30% GLASS FILLED POLYESTER FLAME RETARDANT PER UL-94-V0
COLOUR: SEE TABLE
STRAIN RELIEF: UNREINFORCED THERMOPLASTIC FLAME RETARDANT PER UL-94-V0
COLOUR: GREY
CONTACT: PHOSPHORE BRONZE
 - 2 PLATING: 0.38 μ m / 15 μ " Au OVER 1.27 μ m / 50 μ " Ni MIN IN CONTACT AREA REMAINDER OF PRODUCT (IDC PART) 1.5 μ m / 60 μ " TIN LEAD OVER 1.27 μ m / 50 μ " Ni
 - 3 COVER AND STRAIN RELIEF ARE LOOSE PIECES DELIVERED IN BOX
 - 4 DIM PRODUCT WITH COVER IN PRELOAD POSITION 13 \pm 0.3 / .512 \pm .008
 - 5 A DASH "A" AT THE END OF THE PART NUMBER TO INDICATE A SELECTIVE LOADED (SEE TABLE TO IDENTIFY MISSING TERMINALS POSITION), COLOR: BLUE SEE TABLE
 - 6 A DASH "K" AT THE END OF THE PART NUMBER TO INDICATE A SOLID CENTER KEY
 - 7 A DASH "L" AT THE END OF THE PART NUMBER TO INDICATE A NEW LATCH DESIGN

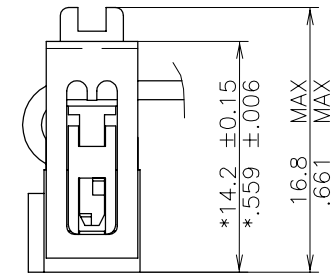


CUSTOMER COPY FOR REFERENCE ONLY

mat'l. code				tolerances unless otherwise specified		CUSTOMER COPY		FCI ELECTRONICS	
ltr	ecp no	dr	date	linear		projection		title	
E	V50865	PNZ	95.07.20					RECEP. 2 PCS.	
F	F03019	DLE	03.01.23					0.38 μ m / 15 μ "	
				angles				product family	QUICKIE III
				dr	P NIZZI	95.07.20		size	213
				engr	JM PHAMVAN	95.07.20		dwg no	93699
				chr	P NIZZI	95.07.20	scale	4:1	sheet
				appd	JMP	95.07.20			1 of 2
sheet index	revision	F	F						
1	2								

PRODUCT NUMBER	SIZE	DIM "A"	DIM "B"	DIM "C"	DIM "S"	BASE COLOUR	COVER COLOUR	SELECTIVE LOADED MISSING TERMINAL POS.
93699-034	2X17	47.64/1.876	40.64/1.5	47.56/1.872	43.81/1.725	GREY	GREY	
93699-034K	2X17	47.64/1.876	40.64/1.5	47.56/1.872	43.81/1.725	GREY	GREY	
93699-034KA	2X17	47.64/1.876	40.64/1.5	47.56/1.872	43.81/1.725	BLUE	BLUE	1 (SEE NOTE 5)
93699-050	2X25	67.96/2.676	60.96/2.4	67.88/2.672	64.13/2.525	BLUE	GREY	
93699-050K	2X25	67.96/2.676	60.96/2.4	67.88/2.672	64.13/2.525	GREY	GREY	
93699-150	2X25	67.96/2.676	60.96/2.4	67.88/2.672	64.13/2.525	BLUE	GREY	
93699-110K	2X05	17.16/ .676	10.16/ .40	17.08/ .672	13.33/ .525	GREY	GREY	5,8 (SEE NOTE 5)
93699-110KA	2X05	17.16/ .676	10.16/ .40	17.08/ .672	13.33/ .525	GREY	GREY	
93699-130K	2X15	45.56/1.676	35.56/1.40	-	38.73/1.525	GREY	GREY	
93699-320	2X10	29.86/1.176	22.86/ .9	29.78/1.172	26.03/1.025	GREY	GREY	
93699-810	2X05	17.16/ .676	10.16/ .4	17.08/ .672	13.33/ .525	GREY	GREY	
93699-820	2X10	29.86/1.176	22.86/ .9	29.78/1.172	26.03/1.025	GREY	GREY	
93699-826	2X13	37.48/1.476	30.86/1.2	37.40/1.472	33.65/1.325	GREY	GREY	
93699-850	2X25	67.96/2.676	60.96/2.4	67.88/2.672	64.13/2.525	GREY	GREY	
93699-934	2X17	47.64/1.876	40.64/1.5	47.56/1.872	43.81/1.725	GREY	GREY	

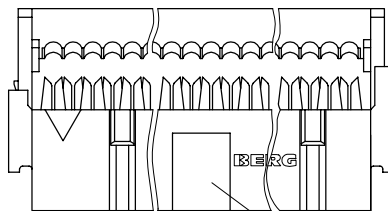
93699-XXXL	2Xxx	SEE NOTE 7
93699-XXXKL	2Xxx	SEE NOTE 6 AND 7
93699-XXXKAL	2Xxx	SEE NOTE 5 AND 7



WITH STANDARD STRAIN RELIEF

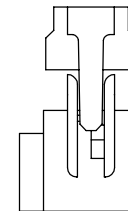
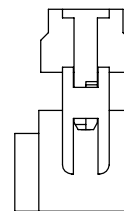
AFTER TERMINATION SIDE VIEW OF ASSEMBLY

(* LATCHING DIM ON HEADER).



1.55 REF
.061 REF

OPTIONAL SPECIAL POLARIZING KEY (K)





NEW DESIGN
SEE NOTE 5

WITH STANDARD STRAIN RELIEF

CUSTOMER COPY FOR REFERENCE ONLY

93699-9XX	○			○		○
93699-8XX		○		○		○
93699-3XX		○		○	○	
93699-1XX	○		○		○	
93699-0XX	○		○		○	

PRODUCT NUMBER	WITH CENTRAL KEY	WITHOUT CENTRAL KEY	WITHOUT	STANDARD	LOW PROFILE	DUAL ENTRY	BLIND
			STRAIN RELIEF			COVER	

mat'l. code SEE NOTES				tolerances unless otherwise specified			CUSTOMER COPY	 ELECTRONICS www.fciconnect.com
ltr	ecn no	dr	date	linear				
E	V50865	PNZ	95.07.20				title RECEP. 2PCS. 0.38µm/15µ"	
F	F03019	DLE	03.01.23					
				angles			product family QUICKIE III	code 213
		dr	P NIZZI	95.07.20				
		engr	JM PHAMVAN	95.07.20		scale 4:1	size dwg no 93699	sheet 2 of 2
		chr	P NIZZI	95.07.20				
		appd	JMP	95.07.20				
sheet index	revision sheet							