

1N5186 THRU SPD5192 3 AMP FAST RECOVERY RECTIFIER 100-1000 VOLTS



14830 Valley View Avenue
La Mirada, California 90638
(213) 921-9660
TWX 910-583-4807
FAX 213-921-2396

CASE STYLE



FEATURES

- FAST RECOVERY 150 NSEC MAX
- PIV TO 1000 VOLTS
- LOW REVERSE LEAKAGE
- HERMETICALLY SEALED
- SINGLE CHIP CONSTRUCTION

MAXIMUM RATINGS

Rating	Symbol	Value	Unit
Peak Repetitive Reverse Voltage and DC Blocking Voltage	$V_{RM} (rep)$		Volts
	V_R	100	
	1N5186	200	
	1N5187	400	
	1N5188	600	
	1N5190	800	
		1000	
RMS Reverse Voltage	V_r		Volts
	1N5186	70	
	1N5187	140	
	1N5188	280	
	1N5190	420	
	SPD5191	560	
		700	
Half Wave Rectified Forward Current, Averaged Over Full Cycle (Resistive Load, 60Hz, Sine Wave $T_A = 55^\circ C$)	I_O	3	Amps
Peak Repetitive Forward Current ($T_A = 55^\circ C$, 8.3 ms Pulse, Allow Junction to Reach Equilibrium Between Pulses)	$I_{FM} (rep)$	25	Amps
Peak Surge Current ($T_A = 55^\circ C$, Superimposed on Rated Current at Rated Voltage, 8.3 ms Pulse)	$I_{FM} (surge)$	100	Amps
Operating and Storage Temperature	T_J, T_{stg}	-65 to +200	$^\circ C$

HERMAL CHARACTERISTICS

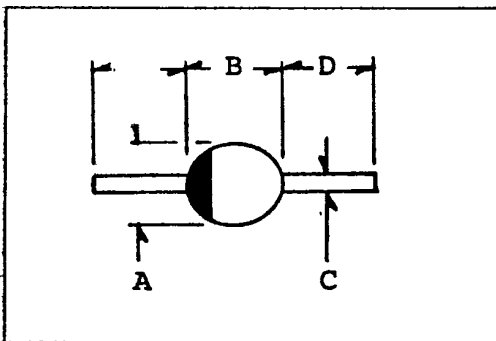
Characteristics	Symbol	Max	Unit
Thermal Resistance, Junction to Leads, $L = 3/8"$	$R_{\theta JL}$	27	$^\circ C/W$

ELECTRICAL CHARACTERISTICS

Characteristics	Symbol	Value	Unit
Max Full Cycle Forward Voltage Drop, Averaged Over Full Cycle (I_O (Max), 60 Hz, Square Wave, $T_A = 55^\circ\text{C}$)	$V_{F(AV)}$.6	Vdc
Max Instantaneous Forward Voltage Drop ($I_F = 3 \text{ A dc}$, $T_A = 25^\circ\text{C}$, 300 μs Pulse)	V_F	1.3	Vdc
Max Full Cycle Reverse Leakage Current, Averaged Over Full Cycle (Rated V_R 60Hz, Square Wave, $T_A = 100^\circ\text{C}$)	$I_{R(AV)}$	100	$\mu\text{A dc}$
Max Reverse Leakage Current (Rated V_R , $T_A = 25^\circ\text{C}$)	I_R	5	$\mu\text{A dc}$
Max Junction Capacitance ($V_R = 10 \text{ V}$, $T_A = 25^\circ\text{C}$)	C_J	40	pf

REVERSE RECOVERY CHARACTERISTICS

Characteristics	Symbol	Min	Typ	Max	Unit
Reverse Recovery Time ($I_F = 500\text{ma}$, $I_R = 1\text{A}$, $I_{RR} = 250\text{ma}$)	t_{rr}	--	--	150	ns
Characteristics	Symbol	Min	Typ	Max	Unit
Reverse Recovery Time ($I_F = 500\text{ma}$, $I_R = 1\text{A}$, $I_{RR} = 250\text{ma}$)	t_{rr}	--	--	250	ns
Characteristics	Symbol	Min	Typ	Max	Unit
Reverse Recovery Time ($I_F = 500\text{ma}$, $I_R = 1\text{A}$, $I_{RR} = 250\text{ma}$)	t_{rr}	--	--	500	ns

PHYSICAL DIMENSIONS**KEY TO DIMENSIONS:**

(Inches)

- A = .170 - .250
 B = .240 - .260
 C = .048 - .052
 D = 1.10 Min.

SSD SOLID STATE DEVICES, INC.