
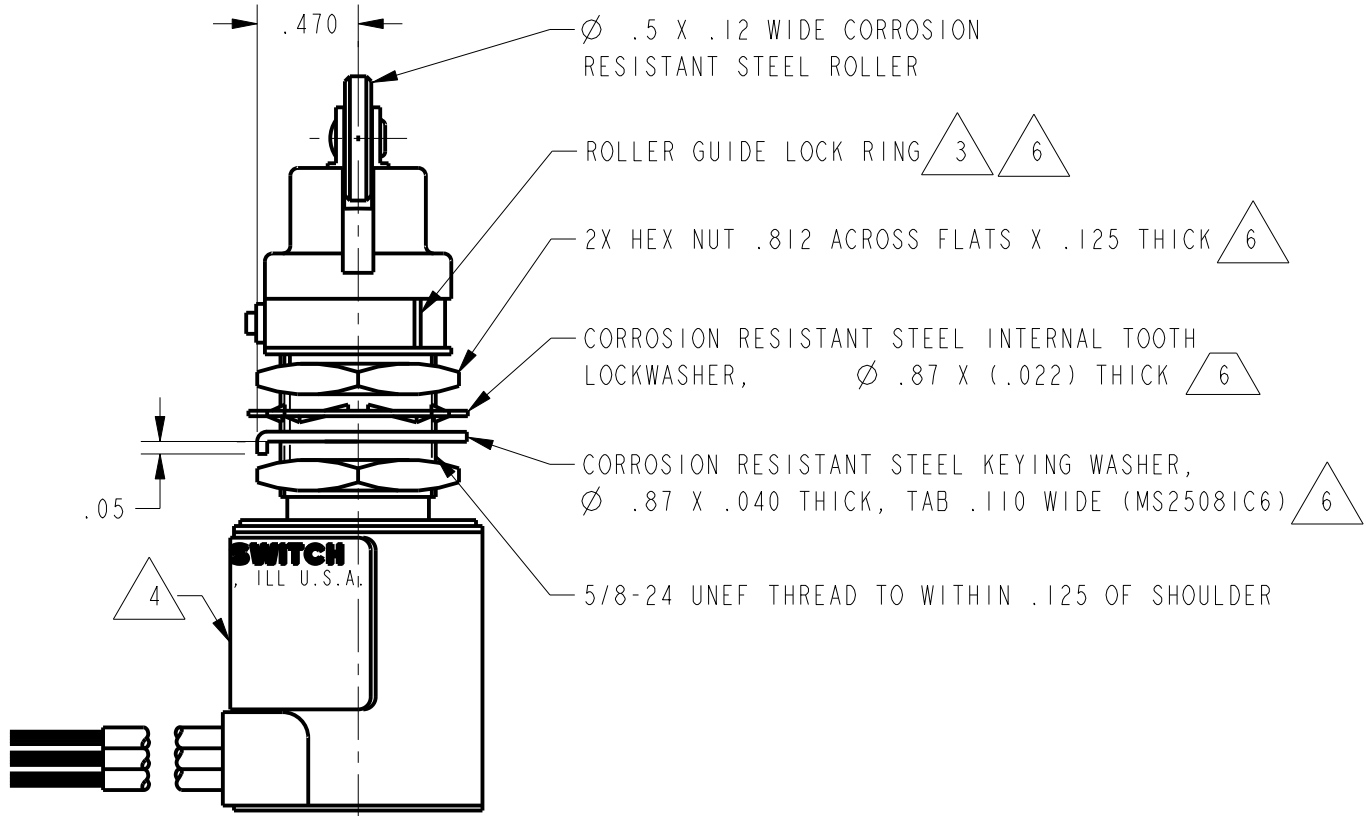
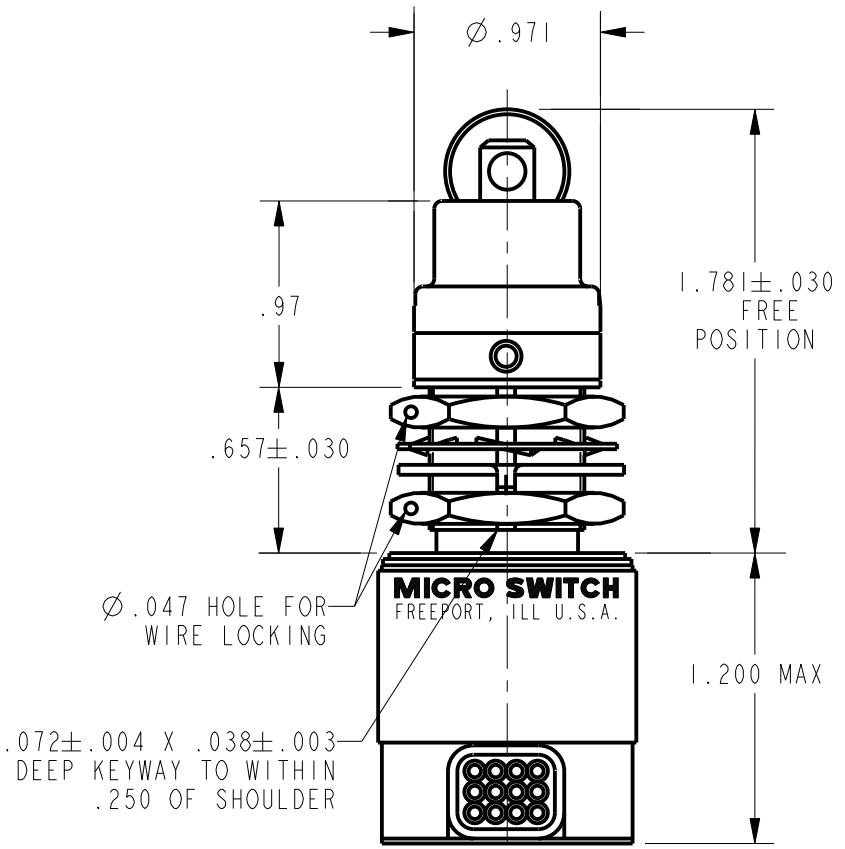
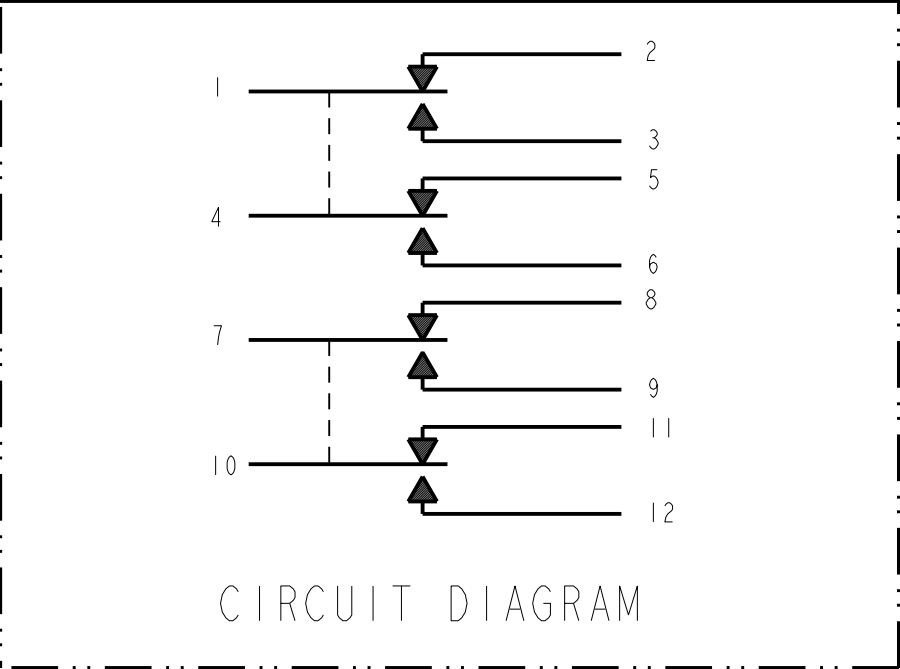
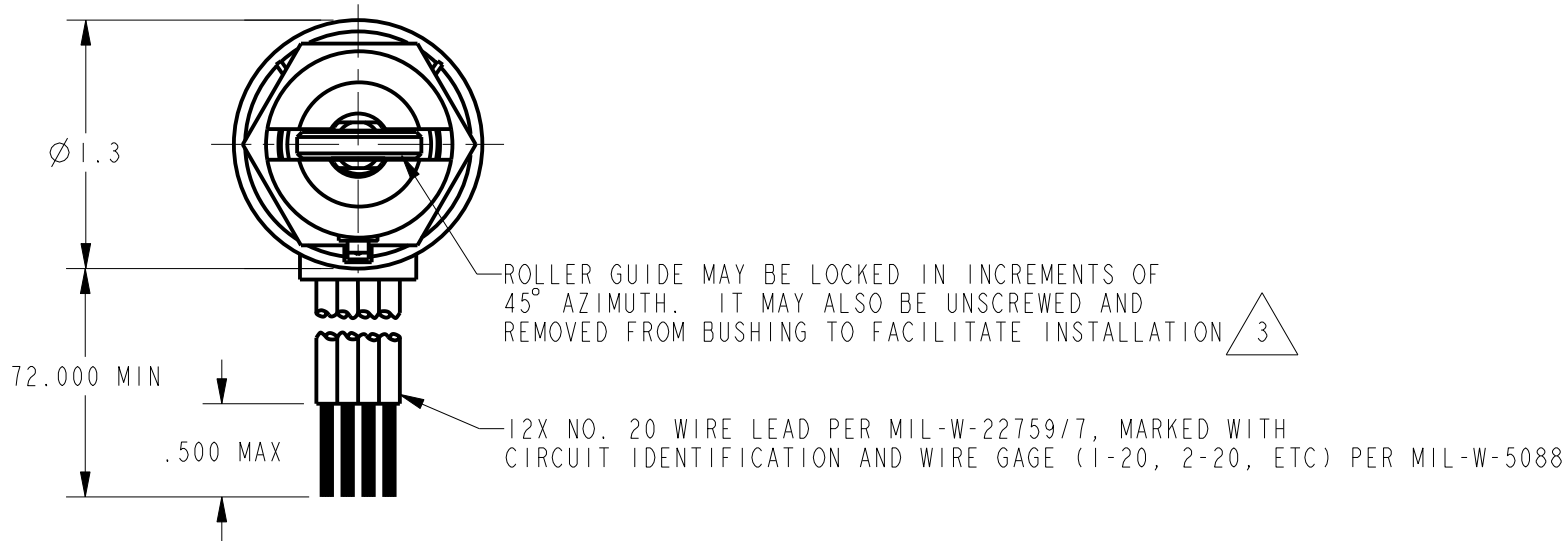


HONEYWELL
PART NUMBER
424HE55-6
FAA-PMA 

REV	DOCUMENT	CHANGED BY	CHECK
8	0012481	KSR 25APR05	AK



- NOTES
- 1 - CORROSION RESISTANT STEEL ENCLOSURE
 - 2 - SWITCH SEALED PER MIL-PRF-8805 SYMBOL 5
 - 3 - TO ADJUST ROLLER DIRECTION, REMOVE ROLLER GUIDE LOCKRING, SCREW ROLLER GUIDE DOWN AS FAR AS POSSIBLE, THEN UNSCREW TO DESIRED DIRECTION SECURE BY REPLACING ROLLER GUIDE LOCKRING
 - 4 - CIRCUIT DIAGRAM, CATALOG LISTING, FSCM CODE, MICRO SWITCH, FAA-PMA, AND DATE CODE IS SHOWN ON SWITCH
 - 5 - COINCIDENCE OF OPERATING AND RELEASING POINTS: .010 INCH OF PLUNGER TRAVEL
 - 6 - HARDWARE MAY BE PACKAGED UNASSEMBLED PER MIL-PRF-8805
 - 7 - FOR MANUFACTURING DETAIL SEE ASSEMBLY DRAWING 424HE55-6 FOR FAA-PMA

CHARACTERISTICS		ELECTRICAL DATA	
OPERATING FORCE	6 - 12 LB	LOAD	CONTACT ARRANGEMENT 4X S P D T
FULL OVERTRAVEL FORCE	30 LB MAX		28 VDC
RELEASE FORCE	4 LB MIN		SEA LEVEL
PRETRAVEL	.040 MAX		100,000 FT
DIFFERENTIAL TRAVEL	.020 MAX	RES	7
OVERTRAVEL	.250 MIN	IND	4
		MOTOR	4

DESIGN UNITS: INCH
TOLERANCES UNLESS NOTED:
NO PLACE X \pm 0.040
ONE PLACE .X \pm .030
TWO PLACE .XX \pm .015
THREE PLACE .XXX \pm .005
FOUR PLACE .XXXX \pm 0.0001
ANGLES X \pm 0
THIRD ANGLE PROJECTION

DRAWN	JLH	26JUN03
CHECK	SAV	26JUN03
THIS DRAWING COVERS A PROPRIETARY ITEM AND IS THE PROPERTY OF HONEYWELL. THIS DRAWING IS NOT TO BE COPIED OR USED WITHOUT THE PERMISSION OF HONEYWELL.		
INTERPRET PER ANSI Y14.5M 1982 OTHER HONEYWELL ENGINEERING STANDARDS MAY APPLY		
Pro/ENGINEER 2D		

Honeywell			
TITLE			
SWITCH - ENCLOSED			
SIZE	TYPE	DRAWING NAME	REV
C	I	424HE55-6	8
SCALE FULL		WEIGHT: 16.0 OZ MAX	SHEET 1 OF 1

Mouser Electronics

Authorized Distributor

Click to View Pricing, Inventory, Delivery & Lifecycle Information:

[Honeywell:](#)

[424HE55-6](#)