

# ASSEMBLY - TOGGLE SWITCH

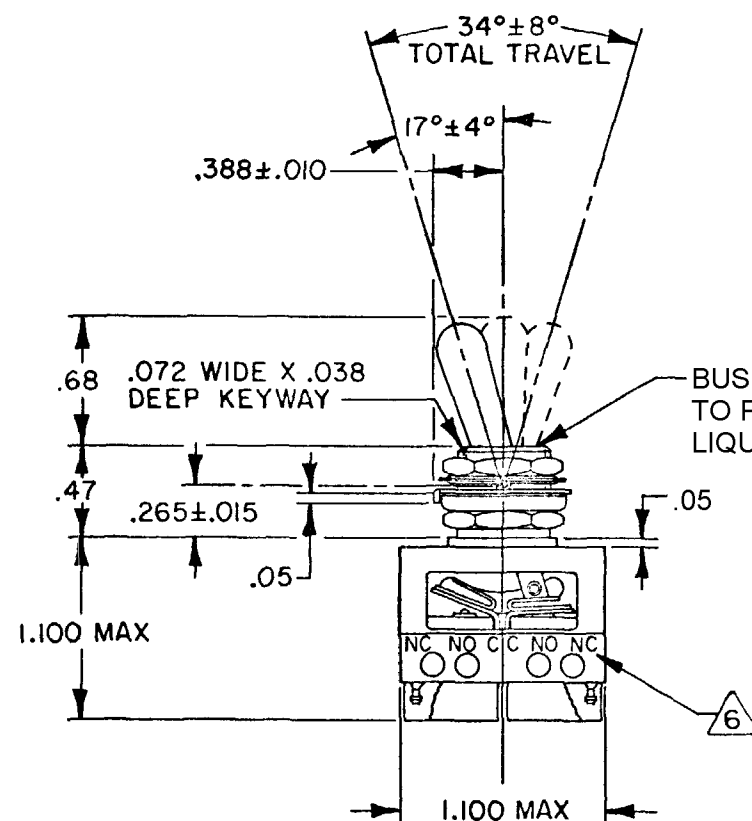
## CATALOG LISTING

# 64AT305 SERIES

## CHART 1

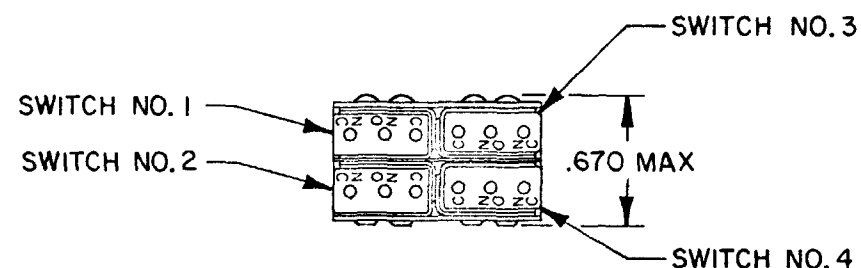
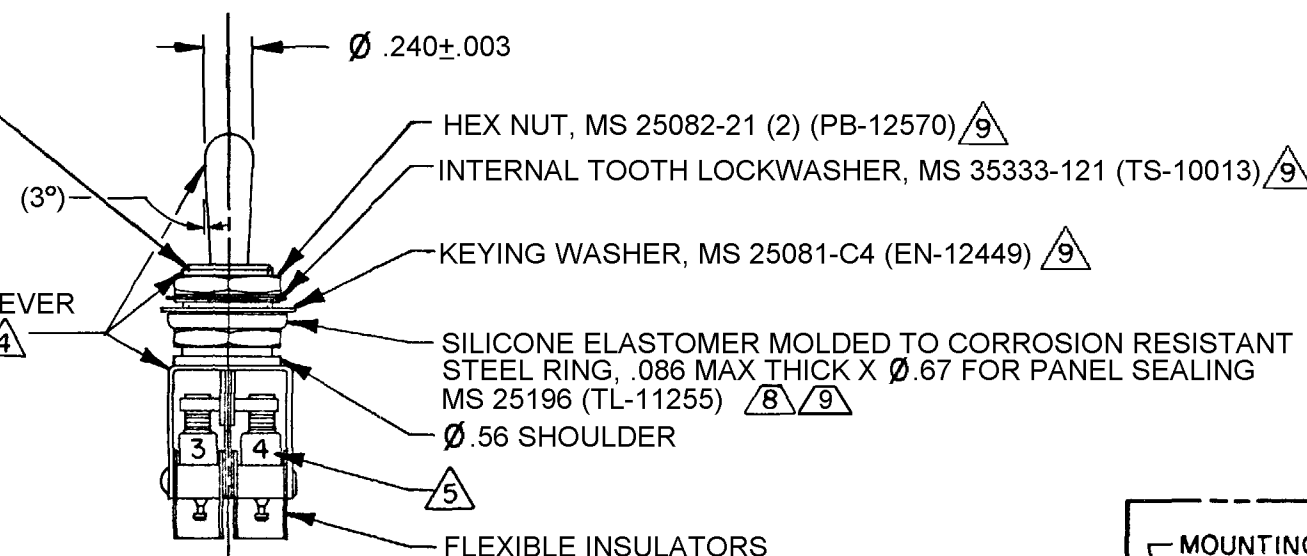
| MILITARY<br>PART NUMBER               | CATALOG<br>LISTING | KEYWAY<br>POSITION |       | CENTER<br>POSITION |      | OPPOSITE KEY-<br>WAY POSITION |       |
|---------------------------------------|--------------------|--------------------|-------|--------------------|------|-------------------------------|-------|
|                                       |                    | C-NC               | C-NO  | C-NO               | C-NC | C-NC                          | C-NO  |
|                                       | 64AT305-1          | 1, 2               | 3, 4  | NONE               | ALL  | 3, 4                          | 1, 2  |
|                                       | 64AT305-3          | 1, 2               | 3, 4  | NONE               | NONE | 3, 4                          | 1, 2  |
|                                       | 64AT305-5          | 1, 2*              | 3, 4* | NONE               | ALL  | 3, 4                          | 1, 2  |
|                                       | 64AT305-7          | 1, 2*              | 3, 4* | NONE               | ALL  | 3, 4*                         | 1, 2* |
|                                       |                    |                    |       |                    |      |                               |       |
| * ASTERISK DENOTES MOMENTARY POSITION |                    |                    |       |                    |      |                               |       |

\* ASTERISK DENOTES MOMENTARY POSITION



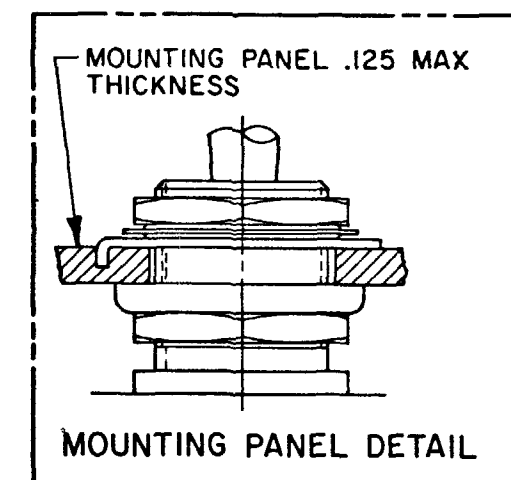
15/32-32 UNS THREAD TO  
WITHIN .062 OF SHOULDER

- BUSHING SEALED INTERNALLY TO PREVENT ENTRANCE OF LIQUIDS OR DUST

CORROSION RESISTANT LEVER  
BUSHING AND BRACKET  $\Delta_4$  —

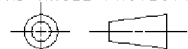
## NOTES

- 1 - UNIT INCLUDES "SX" TYPE BASIC SWITCH (4)
- 2 - SWITCHES DO NOT NECESSARILY OPERATE SIMULTANEOUSLY
- 3 - TERMINALS ARE PLATED FOR SOLDERING
- 4 - DULL FINISH ON LEVER AND BUSHING
- 5 - SWITCH NUMBERS MARKED ON END OF BASIC SWITCHES
- 6 - TERMINAL DESIGNATION STAMPED ON BOTH SIDES OF UNIT
- 7 - WHEN LEVER IS MOVED OUT OF A MAINTAINED POSITION, IT WILL RETURN OF ITS OWN ACCORD TO THE ORIGINAL POSITION OR THE ADJACENT POSITION. THE TOGGLE LEVER MAY HANG UP BETWEEN THE TWO ADJACENT POSITIONS ONLY BY EXERTING CONSIDERABLE EFFORT
- 8 - FOR PANEL SEAL TO BE EFFECTIVE MOUNTING HOLE IN PANEL SHOULD NOT EXCEED .500 DIAMETER
- 9 - HARDWARE FURNISHED ASSEMBLED WITH SWITCH OR IN PACKET 15PA314-AT PER MIL-PRF-8805
- 10 - REPLACEMENT MOUNTING HARDWARE PACKET 15PA314-AT
- 11 - SWITCH SERIES MEETS THE REQUIREMENTS OF MIL-PRF-8805/98 EXCEPT INITIAL CONTACT RESISTANCE IS 50 MILLIOHMS AND FINAL CONTACT RESISTANCE AFTER MECHANICAL ENDURANCE IS 500 MILLIOHMS MAX



THIS DRAWING COVERS A PROPRIETARY ITEM AND IS THE PROPERTY OF MICRO SWITCH, A DIVISION OF HONEYWELL. THIS DRAWING IS NOT TO BE COPIED OR USED WITHOUT THE APPROVAL OF MICRO SWITCH.

THIRD ANGLE PROJECTION



SCALE FULL

DO NOT SCALE PRINT

UNLESS OTHERWISE SPECIFIED  
TOLERANCES ARE

|           |      |            |
|-----------|------|------------|
| ONE PLACE | (.0) | $\pm .030$ |
|-----------|------|------------|

TWO PLACE (.00) +.015

THREE PLACE ( 000)  $\pm$  005

|             |        |   |
|-------------|--------|---|
| THREE PLAGE | (.000) | ± |
| ANGLES      |        | ± |

WEIGHT .07 LB EST

ANSI Y14.5M-1982 APPLIES

| ELECTRICAL RATINGS |           |                |           |
|--------------------|-----------|----------------|-----------|
| LOAD               | SEA LEVEL |                | 50,000 FT |
|                    | 28 VDC    | 115 VAC, 60 HZ | 28 VDC    |
|                    | (AMPERES) | (AMPERES)      | (AMPERES) |
| RESISTIVE          | 7         | 7              | 4         |
| INDUCTIVE          | 4         | 7              | 2.5       |

# Mouser Electronics

Authorized Distributor

Click to View Pricing, Inventory, Delivery & Lifecycle Information:

[Honeywell:](#)

[64AT305-3](#)