

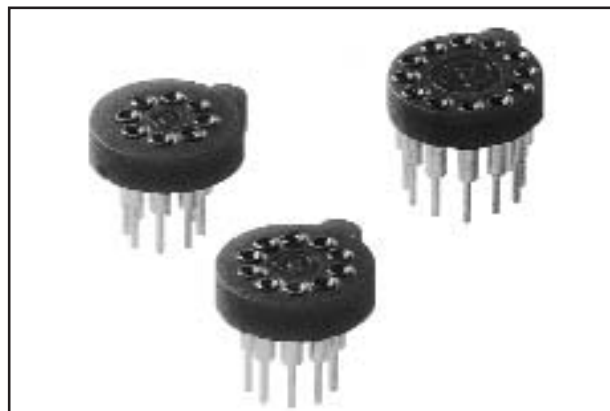
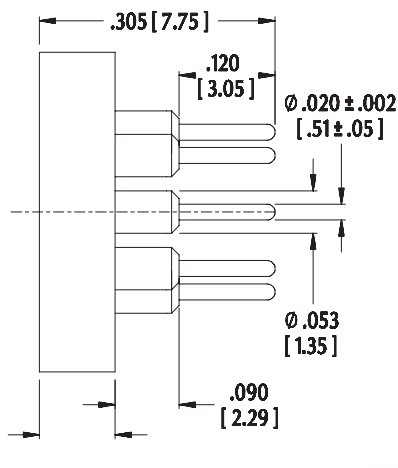


- Aries' TO sockets feature molded chamfer lead-ins for easy device insertion.
- High stand-off design for heat dissipation and easy cleaning.
- External polarization for positive location.

- Body material is black UL 94-V0 Glass-filled 4/6 Nylon.
- Pin body is Brass Alloy 360 1/2 hard per UNS C36000 ASTM-B16-00.
- Pin body plating:
 - 10TL is 200μ [5.08μm] min. 93/7 Tin/Lead per ASTM B545 over 100μ [2.54μm] min. Nickel per SAE-AMS-QQ-N-290.
 - 10 is 200μ [5.08μm] min. Tin per ASTM B545 Type 1 over 100μ [2.54μm] min. Nickel per SAE-AMS-QQ-N-290.
- 4-fingered collet contact is Beryllium Copper Alloy per UNS C17200 ASTM-B194-01.
- Contact plating is 30μ [7.6μm] min. Gold per MIL-G-45204 over 50μ [1.27μm] Nickel per SAE-AMS-QQ-N-290.
- Contact current rating=3 Amps.
- Operating temperature=-67°F to 221°F [-55°C to 105°C].
- Insertion Force=180 grams/pin; Withdrawal Force=90 grams/pin; Normal Force=140 grams/pin; based on a .018 [.46] diameter test lead.
- Socket accept leads .015-.025 [.38-.64] in diameter, .137-.180 [.348-.457] long.

•Suggested PCB hole size= $.030 \pm .002$ [.76 \pm .05] dia.

No. of Pins	Catalog No.	Outside Dia. "A"	Pin Pattern Dia. "B"	Pin to Pin Angle "C"
3	03-514-10	.400 [10.16]	.200 [5.08]	90
4	04-514-10	.400 [10.16]	.200 [5.08]	90
8	08S-514-10	.400 [10.16]	.200 [5.08]	45
8	08L-514-10	.400 [10.16]	.230 [5.84]	45
10	10-514-10	.400 [10.16]	.230 [5.84]	36
12	12-514-10	.405 [10.231]	.300 [7.62]	30

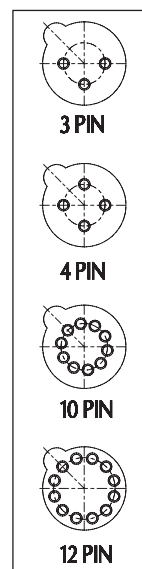


Note: Aries specializes in custom design and production. In addition to the standard products shown on this page, special materials, platings, sizes, and configurations can be furnished, depending on quantities. Aries reserves the right to change product specifications without notice.

ORDERING INFORMATION

XX-514-10-XX

No. of pins (see table) Series Gold collet/Tin shell plated solder tail Option: TL= Gold collet/ Tin/Lead Plated solder Tail



Bristol, PA USA
TEL: (215) 781-9956
FAX: (215) 781-9845

14006
REV. E

Mouser Electronics

Authorized Distributor

Click to View Pricing, Inventory, Delivery & Lifecycle Information:

[Aries Electronics:](#)

[08L-514-10](#) [08S-514-10](#) [03-514-10](#) [04-514-10](#) [12-514-10](#) [10-514-10](#)