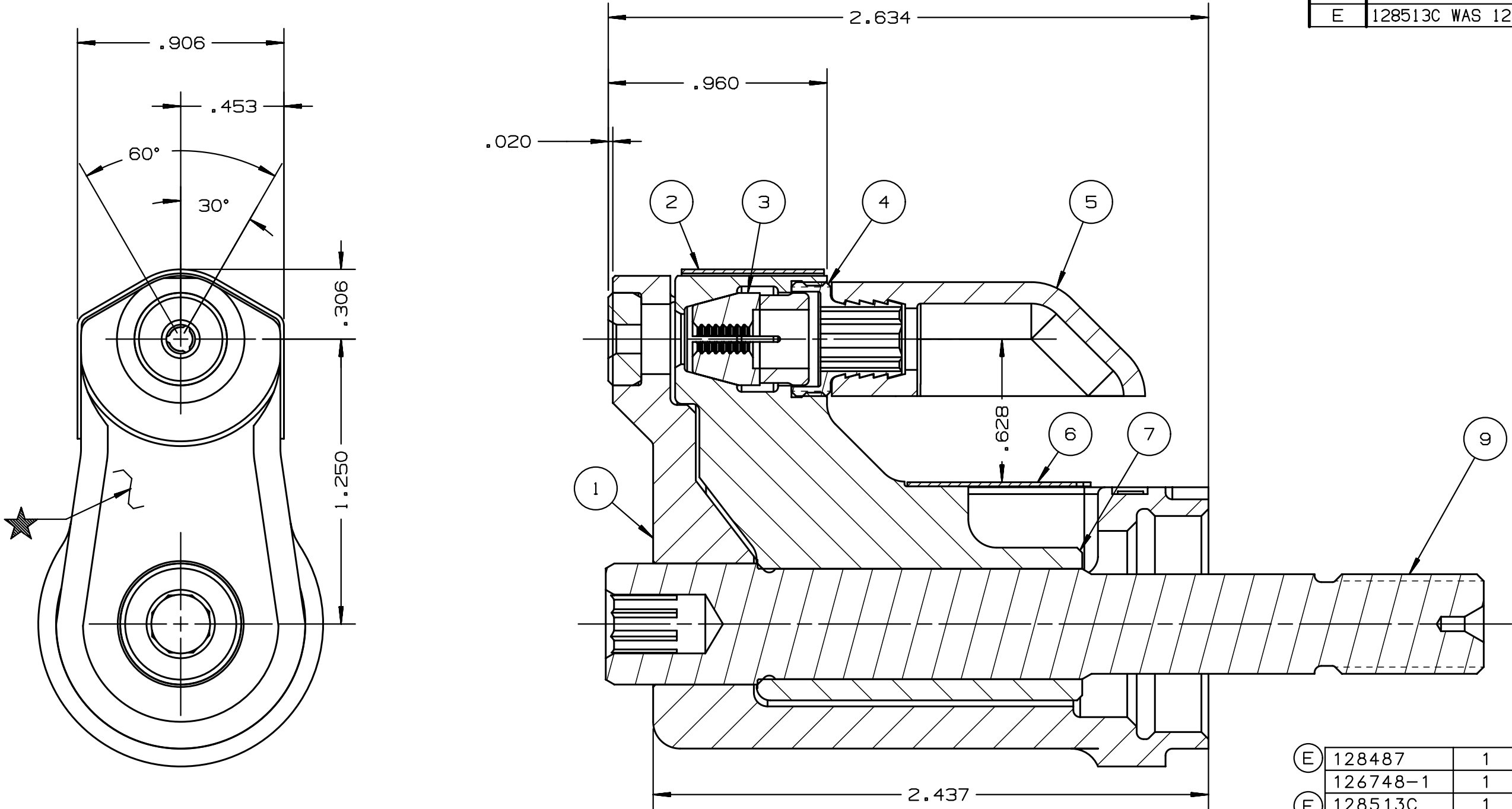


REV	DESCRIPTION	DET	DATE
C	REWROTE NOTES: ADDED .453 CENTER TO EDGE DIMENSION		11/24/09
D	128080 WAS 127206	MJK	5/05/10
E	128513C WAS 128623C. ADDED 128487	JJC	08/03/12



NOTES:

- 1 MAXIMUM RECOMMENDED STROKE .500
- 2 FOR USE WITH THE 206-375 TOOL. FOR OTHER TOOLS AND/OR STROKE COMBINATIONS, REFER TO THE STROKE LIMITER CHART (HK1122) OR CONSULT AN AFS/HUCK SPECIALIST.
- 3 SHIP WITH: STOP 126747, DEFLECTOR 126748-1 AND (2) .030 SHIMS 128290 REFERENCE PB563 FOR PROPER USE.
- 4 128623C ASSEMBLY CONSISTS OF 128513C COLLET AND 128487 DRAWBAR.
- 5 128336-05C ASSEMBLY CONSISTS OF 127077C ANVIL HOLDER AND 127207-05 ANVIL INSERT

E	128487	1	DRAWBAR	9
	126748-1	1	UNITIZED DEFLECTOR	8
E	128513C	1	COLLET	7
	126745	1	GUARD	6
	120095	1	DEFLECTOR	5
	122912	1	BARBED RETAINER	4
	128080	1	UNITIZED CHUCK JAW	3
	127582	1	TOP GUARD	2
	127295C	1	ANVIL ASSEMBLY	1
	PART NO.	QTY	DESCRIPTION	ITEM

IDENTIFICATION PER SPEC 42-311: ★ ETCH		HUCK INTERNATIONAL, INC., I.S.D 1 CORPORATE DR KINGSTON, NEW YORK 12401	
ITAR/ECCN: EAR99		CLEARANCE NOSE ASSEMBLY -05 UAB BR	
SCH B#: 8467.99.0190		FINAL ASSY:	
HTS: 8467.99.0190		DET: MVM	CK: DATE: 10/29/04 SCALE: 2:1
		B	99-3764C