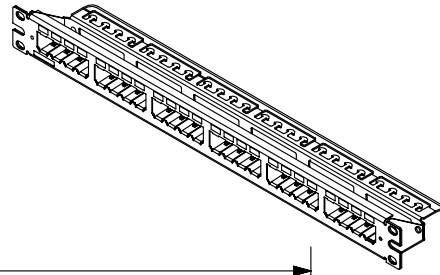


2

1

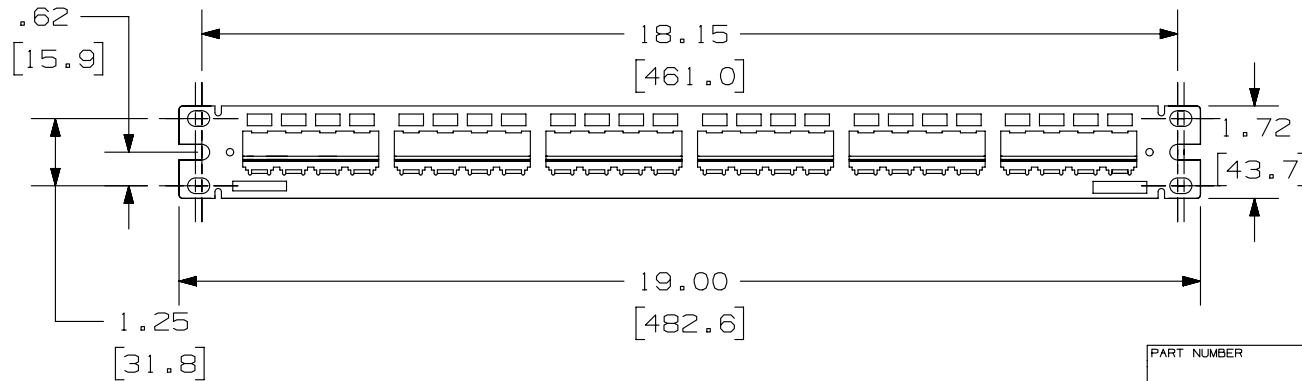
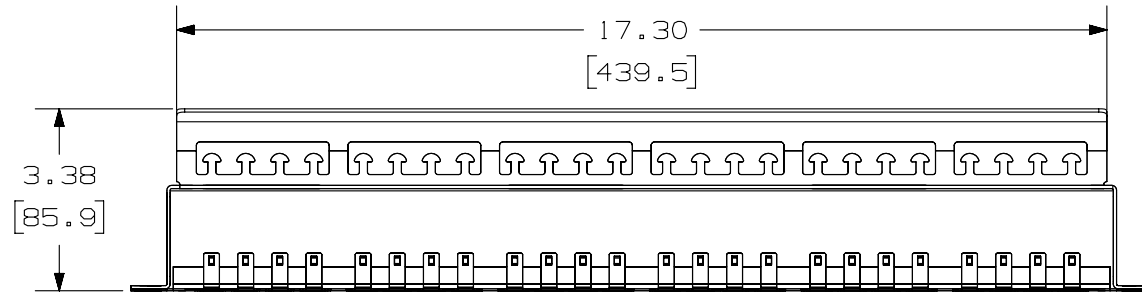
THIS COPY IS PROVIDED ON A RESTRICTED BASIS AND IS NOT TO BE USED IN ANY WAY DETRIMENTAL TO THE INTERESTS OF PANDUIT CORP.



PANDUIT P/N	WEIGHT
CP24WS**Y	11.15 LB/10 PCS (5076.3 g/10 PCS)

NOTES:

- SEE CURRENT CATALOG FOR VARIOUS APPLICATIONS WITH THIS WIRING SYSTEM.
- THE HIGH DENSITY PATCH PANEL IS DESIGNED FOR MOUNTING TO 19" UNIVERSAL RACKS.
- PACKAGE CONTENTS:
 - CP24WSBLY:
 - 24 PORT STAMPING
 - CABLE TIE
 - SCREW KIT (INCLUDES FOUR #12-24 SCREWS AND FOUR LOCK WASHERS)
 - SCREW KIT (INCLUDES FOUR M6 SCREWS)
 - REMOVAL TOOL (CPT)
 - CP24WSLGY AND CP24WSTGY:
 - 24 PORT STAMPING
 - CABLE TIE
 - SCREW KIT (INCLUDES FOUR M6 SCREWS, CAGE NUTS, AND WASHERS)
 - REMOVAL TOOL (CPT)
- PATCH PANELS ACCEPT SNAP-IN MINI-COM MODULES.
- DIMENSIONS IN PARENTHESIS ARE IN METRIC.



PART NUMBER		CP24WS**Y	
TITLE		MINI-COM 24 PORT ALL METAL MODULAR PATCH PANEL WITH SUPPORT BAR	
CUSTOMER DRAWING			
ITEM REVISION NAME		M02479CM/00	
DATASET FILE NAME		M02479CM_DC66/00B	
UNLESS OTHERWISE SPECIFIED, DIMENSIONAL TOLERANCES ARE: IN [mm]		MATERIAL:	
.X ± .XX ± .03 (.8)		PANEL: STAINLESS STEEL	
.XXX ± .010 (.3)		STRAIN RELIEF: C.R.S.	
ANGLES ±		DRAWING NUMBER:	
		02479-066	
DRAWN BY		SCALE	
JSP		NONE	
DATE		SHT 1 OF 1	
4-19-06		A	
CHK			
MJD			

REV	DATE	BY	CHK	APR	DESCRIPTION	ECN
1	5/6/14	JSP	REFR	MMR	A. REVISED DRAWING TITLE BLOCK.	02479-066
R	4-19-06	JSP	MJD	MJD	RELEASED TO PRODUCTION	02479-066

2

1

D10100DA/14