

# Single Point Level Switches LS-7



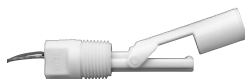
## Small Size - Engineered Plastics, Side Mount

LS-7 Series - Compact side mounts are the solution to many small tanks. These low-cost units are ideal for high volume use in small tanks and vessels. Engineered plastics construction offers broad compatibility in water, oils and chemicals.



**Type 3**

Internal Mounting



**Type 5**

External Mounting



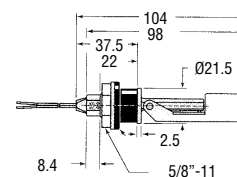
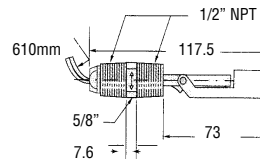
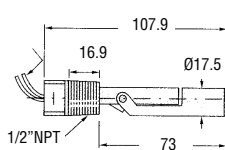
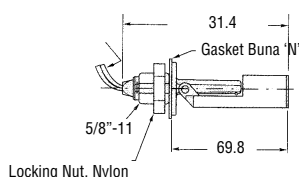
**Type 7**

External Mounting



**Type 10**

External Mounting  
Mounts and seals through non-threaded hole  $\varnothing$  22 using an HNBR compression gasket. Wall thickness 0.5 to 4mm.



## Specifications

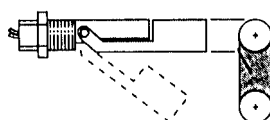
	Type 3	Type 5	Type 7	Type 10
<b>Materials</b>				
<b>Stem/Mounting</b>	Versaplast Polypropylene** Nylon*	Versaplast Polypropylene** Nylon*	Polypropylene** Nylon*	Versaplast Polypropylene** Nylon*
<b>Lead Wire Jacket</b>	PVC	PVC	TPE***	TPE***
<b>Min. specific gravity of the liquid</b>	Versaplast 0.80 PP 0.55 Nylon 0.65	0.80 0.55 0.65	0.55 0.65	0.80 0.55 0.65
<b>Operating Temperature</b>	Versaplast -40°C to 121°C PP -40°C to 107°C Nylon -40°C to 121°C	-40°C to 150°C -40°C to 107°C -40°C to 121°C	-40°C to 107°C -40°C to 121°C	-40°C to 121°C -40°C to 107°C -40°C to 121°C
<b>Operating Pressure Max.</b>	7 bar	7 bar	7 bar	3.5 bar
<b>Switch SPST</b>	20 VA	20 VA	20 VA	20 VA
<b>Lead Wire Gauge (Approx 0.6m long)</b>	22 AWG	22AWG (18AWG Nylon)	18 AWG	22 AWG
<b>Float Arc</b>	55mm	32mm	38mm	53mm
<b>Protection Rating</b>	IP64	IP64	IP65	IP65
<b>Weight approx.</b>	80g	60g	70g	90g

\* Not suitable for long term use in water. \*\* Not suitable for Hydrocarbons \*\*\* Thermoplastic Elastomer Zip Cord

Versaplast (Ryton [80%] + Nylon [20%]) is suitable for both water and Hydrocarbons

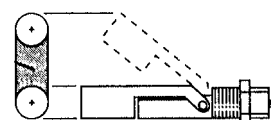
By rotating the switch 180°, the switch operation can be Normally Open or Normally Closed. Arrows on exterior of mounting indicate NO when pointing up.

Normally Open



When the switch is mounted so that the float lowers with the liquid level, the switch is NO

Normally Closed



When the switch is mounted so that the float rises with the liquid level, the switch is NC

## Order data

	Type 3	Type 5	Type 7	Type 10
<b>Polypropylene</b>	164520	131100	160450	165800
<b>Nylon</b>	165570	140620	160460	165900
<b>Versaplast</b>	182600	177100		182700