

D

D

C

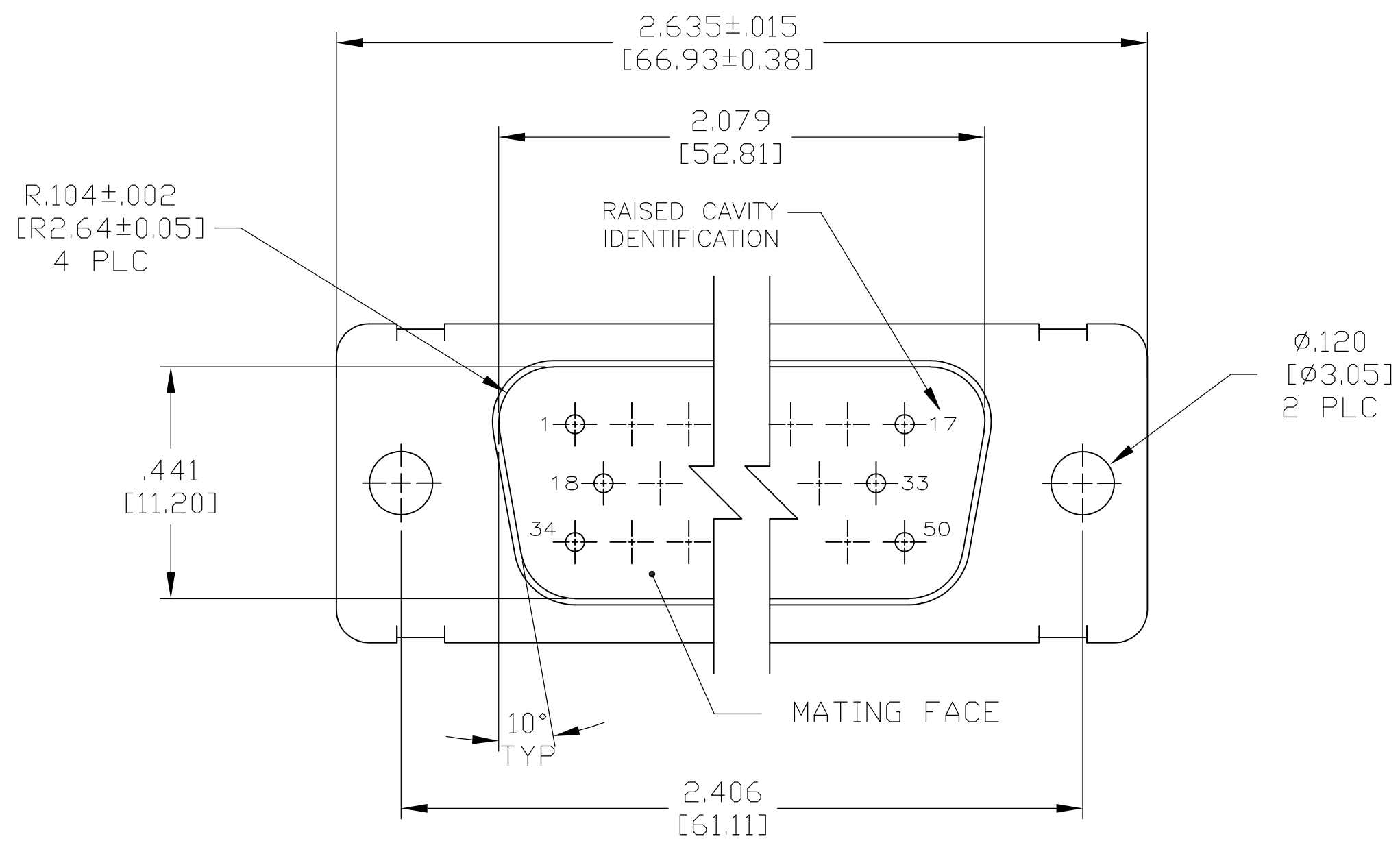
C

B

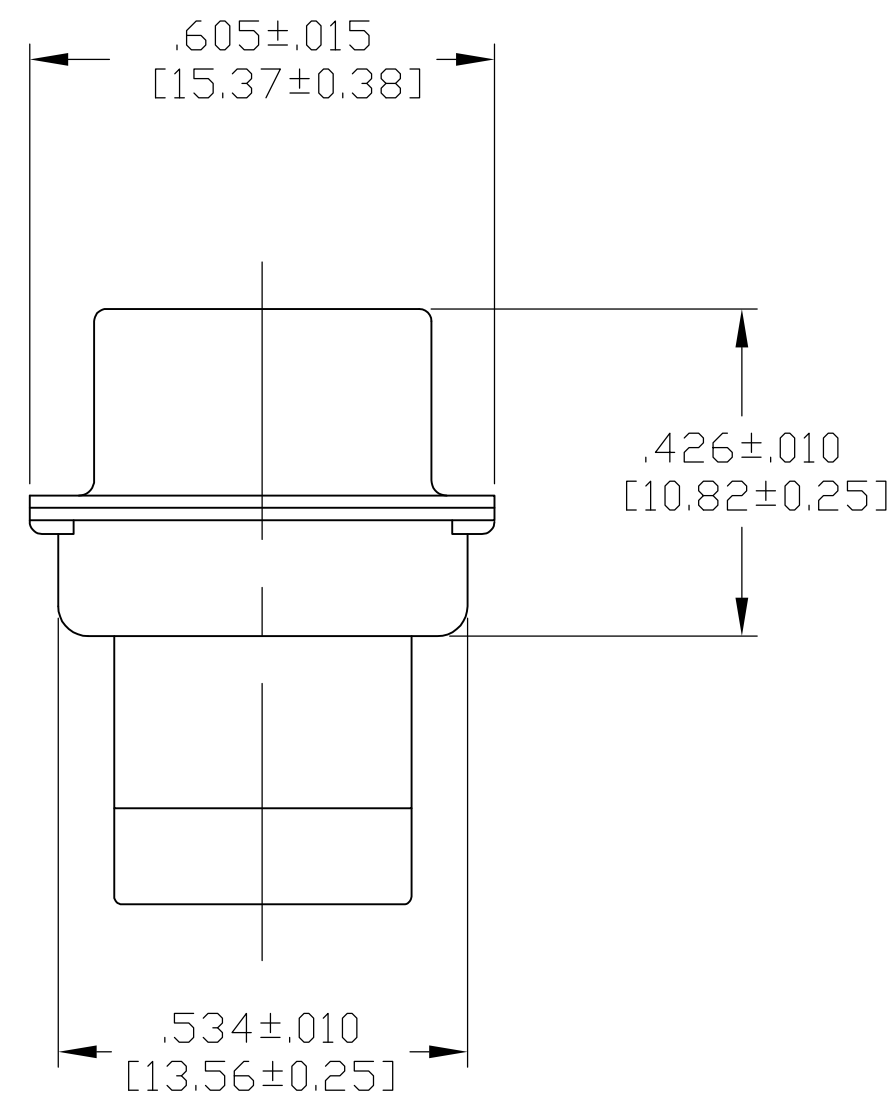
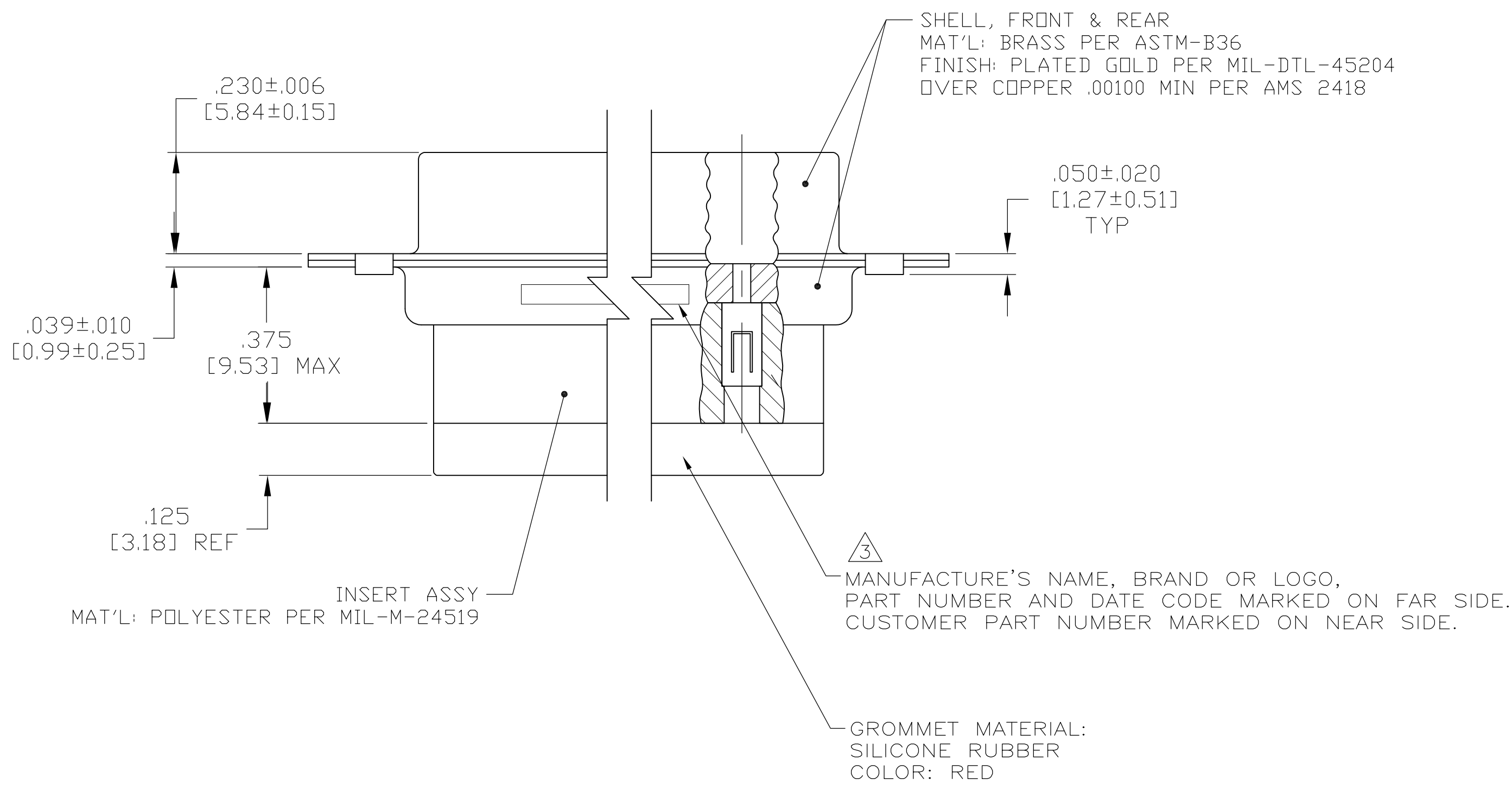
B

A

A



- THIS CONNECTOR ASSEMBLY IS SUPPLIED WITH Be Cu CONTACT RETENTION CLIPS INSTALLED IN THE INSERT ASSEMBLY.
- THIS CONNECTOR ASSEMBLY MATES WITH ANY PLUG CONNECTOR WITH THE SAME INSERT ARRANGEMENT AND DIMENSIONAL REQUIREMENTS PER MIL-C-24308.
- MARKED WITH .047 [1.19]-.062 [1.57] HIGH CHARACTERS. FAR SIDE REFERS TO THE WIDE SIDE OF THE KEYSTONE. NEAR SIDE REFERS TO THE NARROW SIDE OF THE KEYSTONE.
- MAXIMUM WIRE INSULATION TO BE USED WITH THIS CONNECTOR ASSEMBLY IS .054 [1.37] DIAMETER.
- SPECIAL REQUIREMENTS PER BDEING 1A01 DOCUMENT.
- BUILT TO ORDER, NO INVENTORY OF THIS PART NUMBER IS TO BE KEPT. SINGLE LOT DATE CODE REQUIRED.



5 6	1A01-030PHW	1-211642-1
6	A70323-12013-030	211642-8
--	---	211642-4
5 6	1A01-030PHA	211642-1
REMARKS	CUSTOMER MARKING	PART NUMBER

THIS DRAWING IS A CONTROLLED DOCUMENT.		DWN C.C.THOMAS 4-9-09		Tyco Electronics Corporation Harriaburg, PA 17105-3608	
DIMENSIONS: INCHES		CHK R. LEASE 4-9-09		NAME PLUG ASSY.,AMPLIMITE,50 POSN.,SIZE 5, SERIES 109 WITH GROMMET, NON-MAGNETIC	
TOLERANCES UNLESS OTHERWISE SPECIFIED:		APVD R. LEASE 4-9-09		SIZE A1	
0 PLC ± -		PRODUCT SPEC		CAGE CODE 00779	
1 PLC ± -		APPLICATION SPEC		DRAWING NO 211642	
2 PLC ± -		WEIGHT		RESTRICTED TO	
3 PLC ± .005 [0.13]		CUSTOMER DRAWING		SCALE 4:1	
4 PLC ± -		SHEET 1 OF 1		REV G	
ANGLES ± -					
MATERIAL SEE CALLOUTS					
FINISH SEE CALLOUTS					