

Coaxial Amplifier

ZHL-1042J

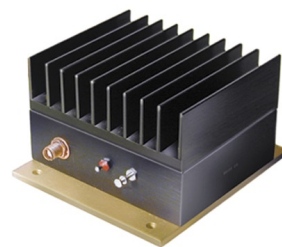
50Ω Medium Power 10 to 4200 MHz

Features

- wideband, 10 to 4200 MHz
- high IP3, +30 dBm typ.
- low noise, 6 dB typ.

Applications

- laboratory
- communication systems



CASE STYLE: NN92

Connectors	Model	Price	Qty.
SMA	ZHL-1042J	\$495.00	(1-9)

Amplifier Electrical Specifications

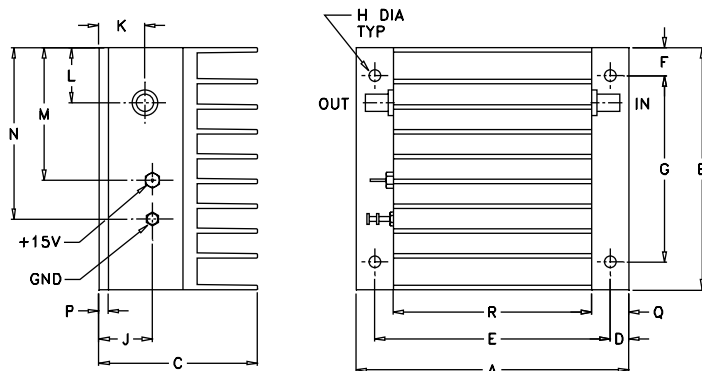
MODEL NO.	FREQUENCY (MHz)		GAIN (dB)			MAXIMUM POWER (dBm)		DYNAMIC RANGE		VSWR (:1) Typ.		DC POWER	
	f_L	f_U	Typ.	Min.	Flatness Max.	Output (1 dB Compr.)	Input (no damage)	NF (dB) Typ.	IP3 (dBm) Typ.	In	Out	Volt (V) Nom.	Current (mA) Max.
ZHL-1042J	10	4200	—	25	±1.5	+20	+10	6	+30	2.5	2.5	15	330

Open load is not recommended, potentially can cause damage.
With no load derate max input power by 20 dB

Maximum Ratings

Operating Temperature	-20°C to 65°C
Storage Temperature	-55°C to 100°C
DC Voltage	+20V Max.

Outline Drawing



Outline Dimensions (inch/mm)

A	B	C	D	E	F	G	H	J
3.66	3.25	2.13	.25	3.16	.38	2.50	.156	.72
92.96	82.55	54.10	6.35	80.26	9.65	63.50	3.96	18.29
K	L	M	N	P	Q	R	wt	
.64	.74	1.78	2.30	.125	.50	2.66	grams	
16.26	18.80	45.21	58.42	3.18	12.70	67.56	440.0	



INTERNET <http://www.minicircuits.com>

P.O. Box 350166, Brooklyn, New York 11235-0003 (718) 934-4500 Fax (718) 332-4661

Distribution Centers NORTH AMERICA 800-654-7949 • 417-335-5935 • Fax 417-335-5945 • EUROPE 44-1252-832600 • Fax 44-1252-837010

Mini-Circuits ISO 9001 & ISO 14001 Certified

REV. OR
M98088
ZHL-1042J
051229
Page 1 of 2

FREQUENCY (MHz)	GAIN (dB)			DIRECTIVITY (dB)			VSWR (:1)		NOISE FIGURE (dB)	POUT at 1 dB COMPR. (dBm)
	12V	15V	16V	12V	15V	16V	IN	OUT		
10.00	27.55	28.68	28.68	33.40	32.60	33.80	1.60	1.57	19.14	22.32
21.40	28.01	29.08	29.09	30.70	19.80	26.40	1.56	1.83	17.99	23.20
67.00	27.31	28.36	28.37	28.30	27.70	27.50	1.57	1.84	13.37	22.82
209.90	27.41	28.43	28.44	32.30	29.80	34.40	1.52	1.78	7.36	22.75
258.50	26.30	27.16	27.18	29.70	23.10	24.80	1.65	1.10	5.34	21.04
657.20	27.06	28.06	28.06	29.80	23.00	30.50	1.24	1.43	5.90	21.80
1514.10	27.81	28.70	28.71	29.50	29.10	27.40	1.53	1.62	5.28	20.96
1836.40	27.53	28.29	28.28	30.00	26.70	27.70	1.88	1.47	5.40	21.14
2158.70	26.69	27.44	27.44	25.50	26.20	27.90	1.94	1.29	5.39	20.59
2373.60	26.44	27.26	27.27	25.00	26.00	28.50	1.83	1.20	5.30	20.84
2910.80	26.45	27.38	27.41	23.90	28.10	23.20	1.48	1.12	5.41	20.61
3233.10	26.74	27.60	27.60	23.50	31.50	25.70	1.45	1.34	5.43	20.72
3555.40	26.87	27.63	27.64	28.60	25.90	25.80	1.17	1.64	5.43	20.61
3877.70	27.26	28.14	28.15	22.20	20.80	22.20	1.31	1.75	5.55	21.22
4200.00	27.17	28.06	28.08	21.90	18.30	21.20	1.46	1.66	5.58	20.82

