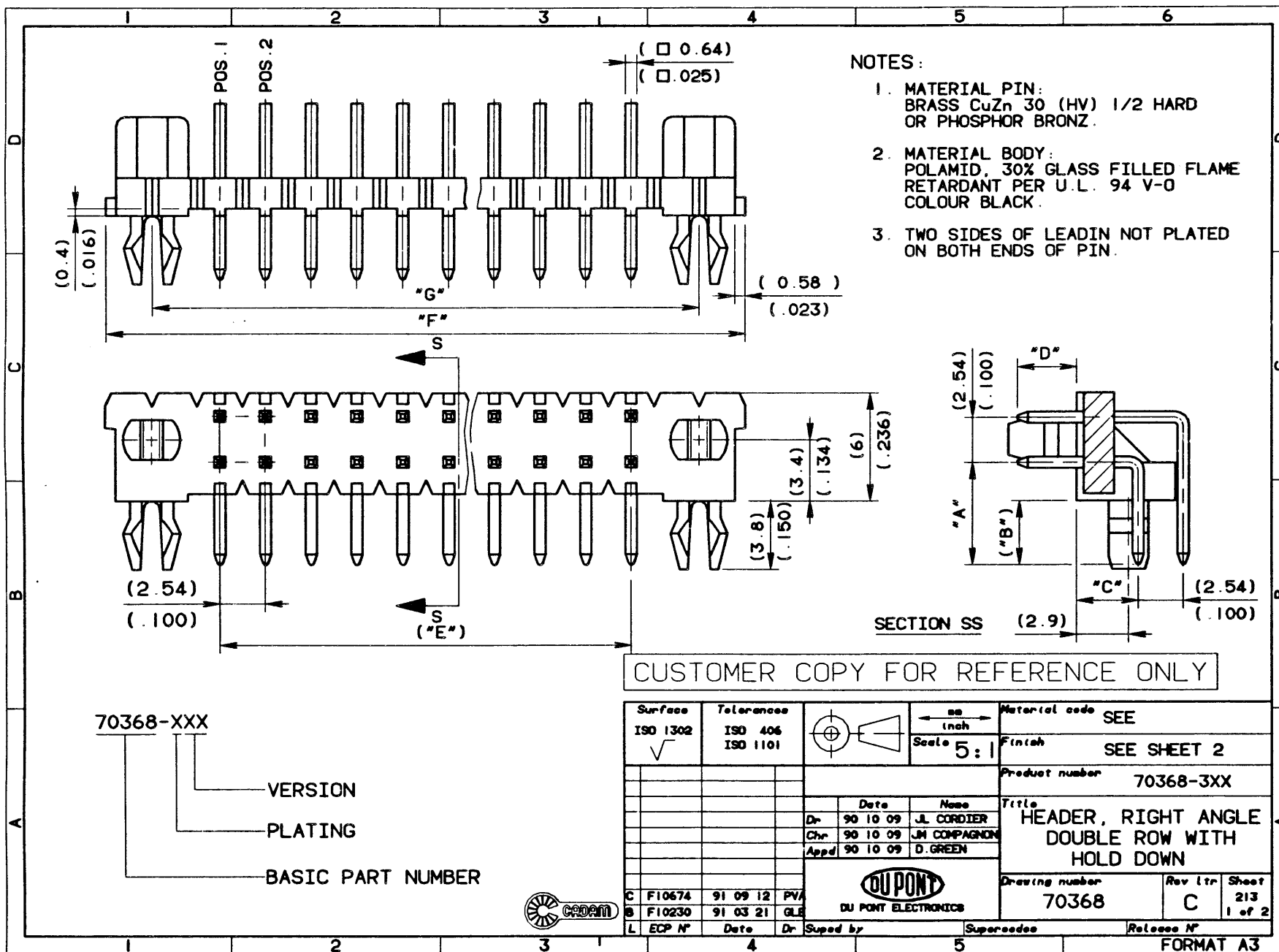


70368 213 1/2



2/2

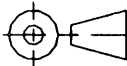
213

70368

PRODUCT NUMBER 70368	NUMBER OF POSITIONS	PRODUCT DIMENSIONS						
		"A"	"B"	"C"	"D"	("E")	("F")	("G")
		±0.25/.010	REF.	±0.20/.008	±0.25/.010	REF.	REF.	REF.
-320	2X10	5.75/.226	3.55/.140	3.4/.134	3.55/.140	22.86/.900	30.4/1.197	35.56/1.400
-328	2X14	5.75/.226	3.55/.140	3.4/.134	3.55/.140	33.02/1.300	40.56/1.597	45.72/1.800
-332	2X16	5.75/.226	3.55/.140	3.4/.134	3.55/.140	38.1/1.500	45.64/1.797	50.8/2.000
-340	2X20	5.75/.226	3.55/.140	3.4/.134	3.55/.140	48.26/1.900	55.8/2.197	60.96/2.400
-352	2X26	5.75/.226	3.55/.140	3.4/.134	3.55/.140	63.5/2.500	71.04/2.797	76.2/3.000


CUSTOMER COPY FOR REFERENCE ONLY


Surface ISO 1302 √	Tolerances ISO 406 ISO 1101		mm inch Scale	Material code SEE SHEET 1
				Finish SEE TABLE
				Product number 70368-3XX
				Title HEADER, RIGHT ANGLE, DOUBLE ROW WITH HOLD DOWN
				Drawing number 70368
				Rev ltr C
				Sheet 213 2 of 2

70368-3XX	4 μm/150 μm Sn Pb (93/7)
PLATING CODE	MINIMUM PLATING THICKNESS OVER 1.27 μm Ni 50 μm




  
 DU PONT ELECTRONICS

C F10674	91 09 12	PVA			
B F10230	91 03 21	GLE			
L ECP N°	Date	Dr	Supd by	Supersedes 70368	Release N°

FORMAT A3