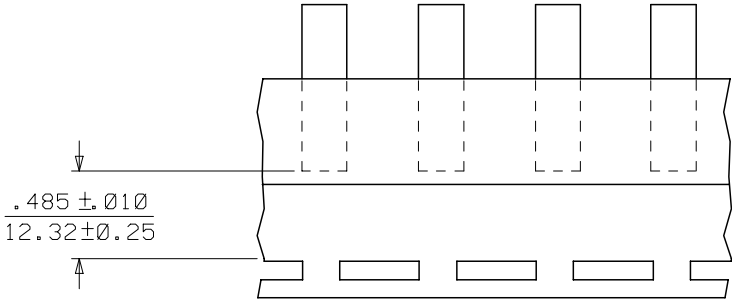
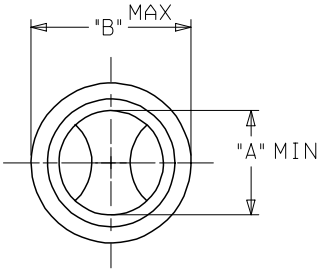
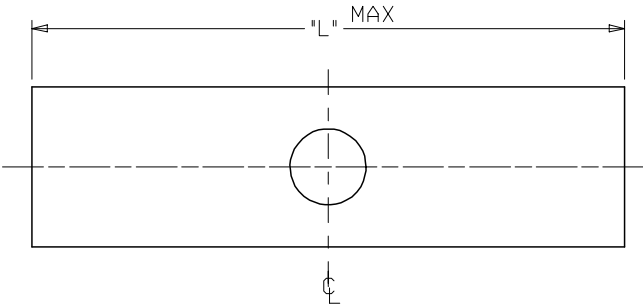


	10	9	8	7	6	5	4	3	2	19203
	MATERIAL NUMBER	ENGINEERING NUMBER	AWG	"L" MAX	"A" MIN	"B" MAX	MATERIAL	PACKAGING	TEMPERATURE RATING	
	192030166	A-T-345	22-18	.675/(17.1)	.059/(1.50)	.130/(3.30)	COPPER	LOOSE PIECE	650°F (343°C)	
F	192030171	B-T-331	16-14	.675/(17.1)	.091/(2.31)	.160/(4.06)	COPPER		650°F (343°C)	
	192030183	C-T-346	12-10	.827/(21.0)	.139/(3.53)	.223/(5.66)	COPPER		650°F (343°C)	
	192030104	C-T-346T	12-10	.827/(14.7)	.139/(3.53)	.223/(5.66)	COPPER	TAPE MOUNTED	650°F (343°C)	

(C) (ENTIRE CHART)



PARTS ON TAPE

SALES DRAWING

- NOTES:
1. FINISH: NICKEL PLATED
  2. ALL DIMENSIONS IN INCHES/(MM).
  3. PART IS ROHS COMPLIANT.

DEL STEEL MN FROM CHART EC NO: ETC2007-0397 DRW: JHILL 2007/04/27 CHKD: JMACNEIL 2007/05/09 APPR: JMACNEIL 2007/05/10	QUALITY SYMBOLS ▽=0 ▽=0	GENERAL TOLERANCES (UNLESS SPECIFIED)		DIMENSION STYLE IN/MM		SCALE ---	DESIGN UNITS INCH	THIRD ANGLE PROJECTION
				mm	INCH	DRAWN BY BRE	DATE 2001/09/28	
				4 PLACES ± ---	± ---	CHECKED BY	DATE	
				3 PLACES ± ---	± ---	HEB	DATE 2001/09/28	
C	DESCRIPTION REV			2 PLACES ± ---	± ---	APPROVED BY RWD	DATE 2001/09/28	BUTT CONNECTORS, TEMP-TERMS, 650 DEG F  MOLEX INCORPORATED  SD-19203-012
				1 PLACE ± ---	± ---	MATERIAL NO.	DOCUMENT NO.	
				ANGULAR ± ---°		SEE CHART		
				DRAFT WHERE APPLICABLE MUST REMAIN WITHIN DIMENSIONS		THIS DRAWING CONTAINS INFORMATION THAT IS PROPRIETARY TO MOLEX INCORPORATED AND SHOULD NOT BE USED WITHOUT WRITTEN PERMISSION		
								SHEET NO. 1 OF 1

# Mouser Electronics

Authorized Distributor

Click to View Pricing, Inventory, Delivery & Lifecycle Information:

Molex:

19203-0166