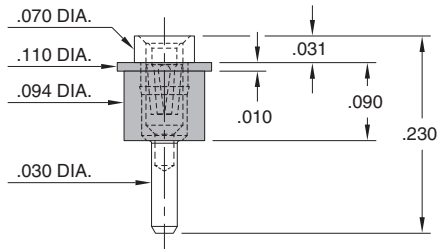
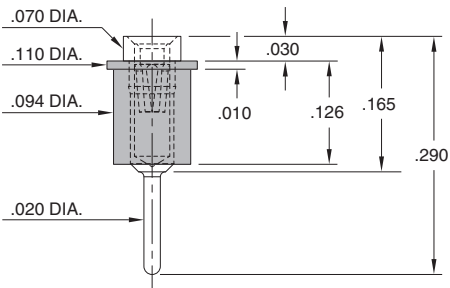


# INTERCONNECTS

## SERIES 305, 310 DISCRETE INSULATED RECEPTACLES



**FIG. 1**



**FIG. 2**

- Series 305 and 310 single position insulated parts are offered in standard and low profile styles

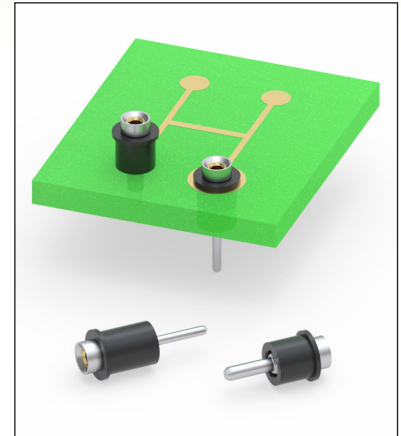
305-43-001-30-010800 uses pin #0501-0

310-43-001-30-010800 uses pin #1001-0

See pages 162 and 165 for details

- Insulated terminals are used to electrically isolate single pin interconnects in an assembly. The plastic sleeve provides insulation of the terminal from nearby conductive components or for applications such as mounting through a metal panel or other non-insulated housing. The sleeve also facilitates the handling of small, individual terminals and can provide mechanical support for pins mounted on or through printed circuit boards

- Insulators are high temperature thermoplastic, suitable for most soldering operations



## ORDERING INFORMATION

FIG. 1	Series 305...010800	Receptacle with Sleeve
	305-43-001-30-010800	
FIG. 2	Series 310...010800	Receptacle with Sleeve
	310-43-001-30-010800	

### SPECIFICATIONS:

Insulating Sleeve tolerance:  $\pm .003$

Packaging: Bulk



XX=Plating Code  
See Below

For  
Electrical, Mechanical  
& Environmental Data,  
See page 264

SPECIFY PLATING CODE XX=			43					
Sleeve (Pin)			200 $\mu$ " Sn					
Contact (Clip)			30 $\mu$ " Au					

