



Micro Commercial Components

Micro Commercial Components
20736 Marilla Street Chatsworth
CA 91311

Phone: (818) 701-4933

Fax: (818) 701-4939

PB605 THRU PB610

Features

- Glass Passivated chip
- Low Forward Voltage
- Any Mounting Position
- Silver Plated Copper Leads
- Surge Overload Rating Of 150 Amps
- UL Recognized File # E165989
- Case Material: Molded Plastic. UL Flammability Classificatio Rating 94-0 and MSL Rating 1
- Lead Free Finish/RoHS Compliant (NOTE 1) ("P" Suffix designates RoHS Compliant. See ordering information)

Maximum Ratings

- Operating Temperature: -55°C to +125°C
- Storage Temperature: -55°C to +150°C

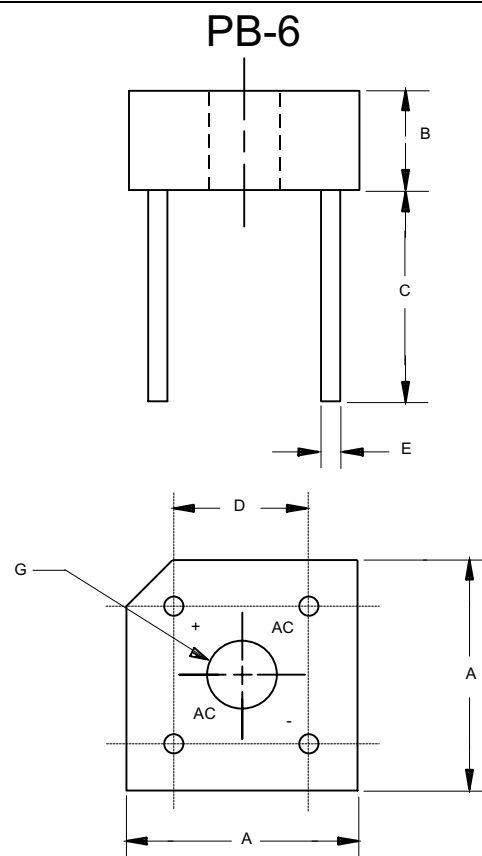
| Microsemi Catalog Number | Device Marking | Maximum Recurrent Peak Reverse Voltage | Maximum RMS Voltage | Maximum DC Blocking Voltage |
|--------------------------|----------------|--|---------------------|-----------------------------|
| PB605 | PB605 | 50V | 35V | 50V |
| PB61 | PB61 | 100V | 70V | 100V |
| PB62 | PB62 | 200V | 140V | 200V |
| PB64 | PB64 | 400V | 280V | 400V |
| PB66 | PB66 | 600V | 420V | 600V |
| PB68 | PB68 | 800V | 560V | 800V |
| PB610 | PB610 | 1000v | 700V | 1000v |

Electrical Characteristics @ 25°C Unless Otherwise Specified

| | | | |
|---|-------------|--------------------|--|
| Average Forward Current | $I_{F(AV)}$ | 6.0A | $T_J = 50^\circ\text{C}$ |
| Peak Forward Surge Current | I_{FSM} | 150A | 8.3ms, half sine |
| Maximum Forward Voltage Drop Per Element | V_F | 1.10V | $I_{FM} = 3.0A$; $T_J = 25^\circ\text{C}$ (Note 2) |
| Maximum DC Reverse Current At Rated DC Blocking Voltage | I_R | 10 μ A 1 mA | $T_J = 25^\circ\text{C}$ $T_J = 100^\circ\text{C}$ |

Notes: 1. High Temperature Solder Exemption Applied, see EU Directive Annex Notes 7
2. Pulse Test: Pulse Width 300usec, Duty Cycle 1%

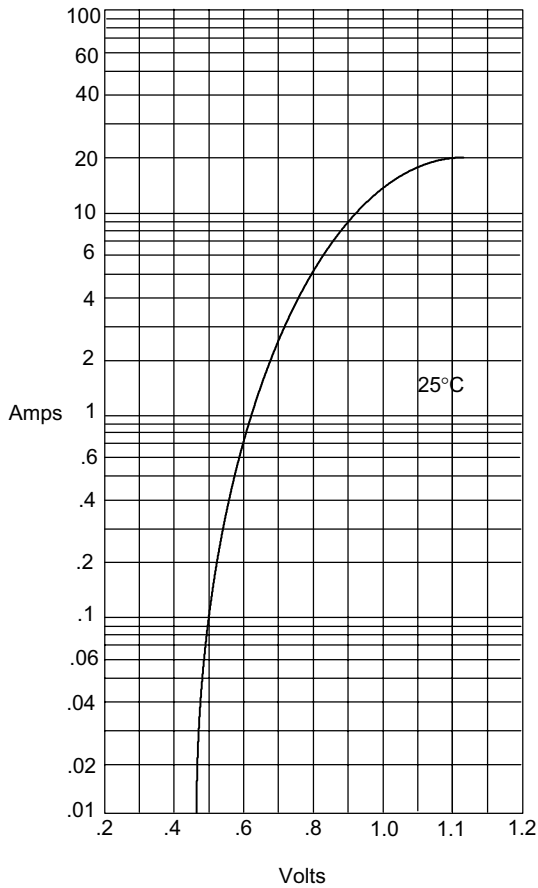
6 Amp Glass Passivated Rectifier 50 to 1000 Volts



| DIMENSIONS | | | | | |
|------------|--------|------|-------|-------|---------|
| DIM | INCHES | | MM | | NOTE |
| | MIN | MAX | MIN | MAX | |
| A | .578 | .618 | 14.69 | 15.71 | 2PL |
| B | .230 | .270 | 5.84 | 6.86 | |
| C | .750 | --- | 19.10 | --- | |
| D | .405 | .444 | 10.30 | 11.30 | 2PL |
| E | .038 | .042 | 0.97 | 1.07 | 4PL/TYP |
| G | .145 | --- | 3.70 | --- | Ø |

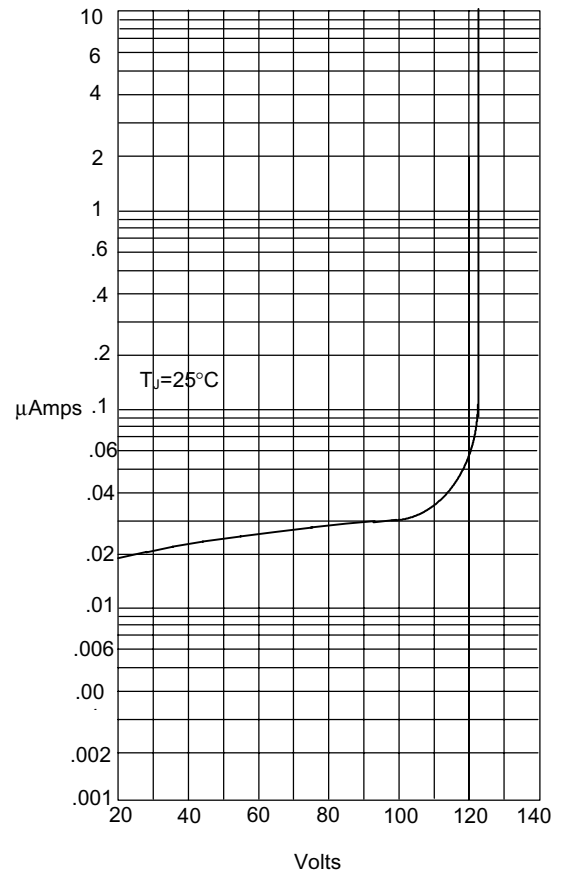
PB605 thru PB610

Figure 1
Typical Forward Characteristics



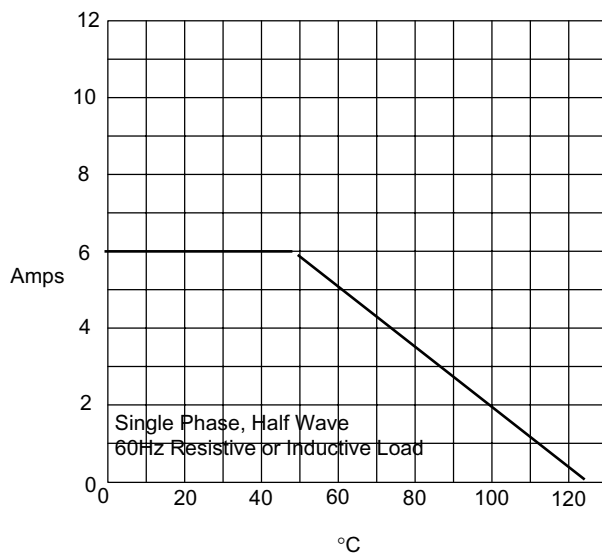
Instantaneous Forward Current - Amperes *versus*
Instantaneous Forward Voltage - Volts

Figure 2
Typical Reverse Characteristics



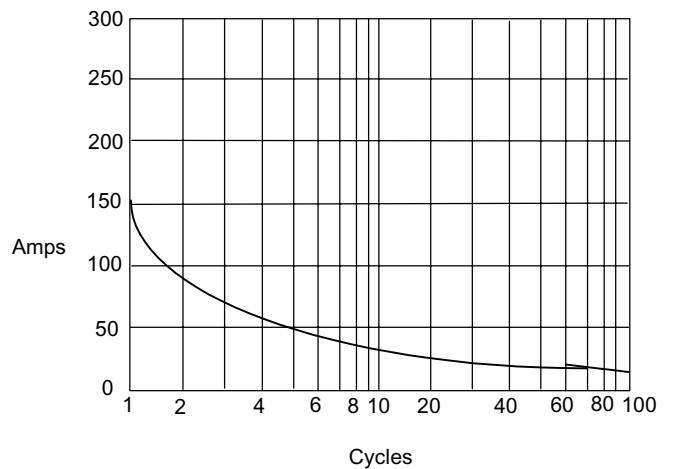
Instantaneous Reverse Leakage Current - MicroAmperes *versus*
Percent Of Rated Peak Reverse Voltage - Volts

Figure 3
Forward Derating Curve



Average Forward Rectified Current - Amperes *versus*
Ambient Temperature - °C

Figure 4
Peak Forward Surge Current



Peak Forward Surge Current - Amperes *versus*
Number Of Cycles At 60Hz - Cycles



Micro Commercial Components

Ordering Information

| Device | Packing |
|------------------|-----------------|
| (Part Number)-BP | Bulk;200pcs/Box |

IMPORTANT NOTICE

Micro Commercial Components Corp. reserves the right to make changes without further notice to any product herein to make corrections, modifications , enhancements , improvements , or other changes .
Micro Commercial Components Corp. does not assume any liability arising out of the application or use of any product described herein; neither does it convey any license under its patent rights ,nor the rights of others . The user of products in such applications shall assume all risks of such use and will agree to hold *Micro Commercial Components Corp.* and all the companies whose products are represented on our website, harmless against all damages.

APPLICATIONS DISCLAIMER

Products offer by *Micro Commercial Components Corp.* are not intended for use in Medical, Aerospace or Military Applications.

Mouser Electronics

Authorized Distributor

Click to View Pricing, Inventory, Delivery & Lifecycle Information:

[Micro Commercial Components \(MCC\):](#)

[PB610-BP](#) [PB66-BP](#) [PB68-BP](#) [PB61-BP](#) [PB605-BP](#) [PB64-BP](#) [PB62-BP](#)