

PRODUCT NUMBER
10077488-XXXXXXLF

A

B

C

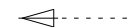
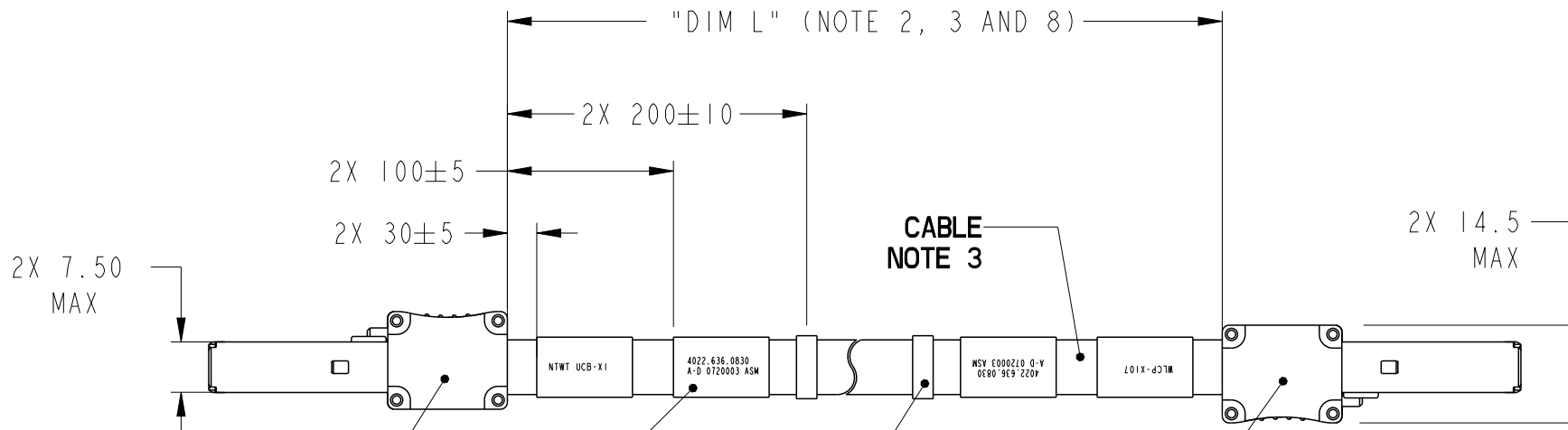
D

A

B

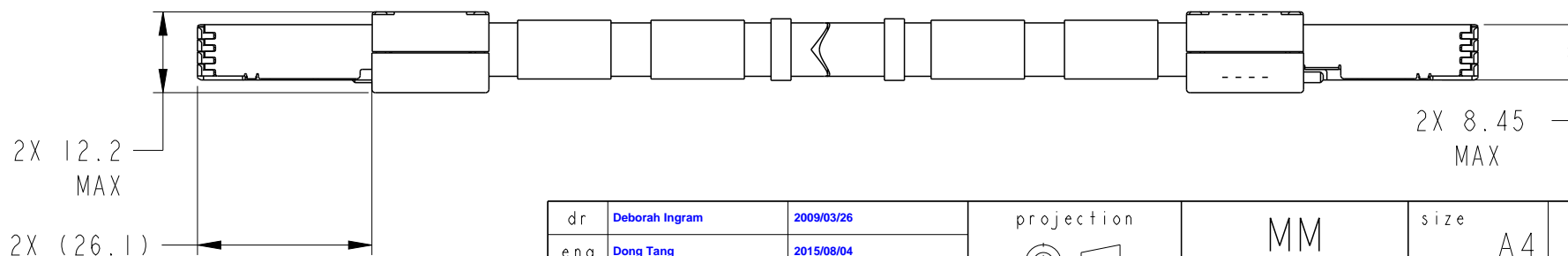
C

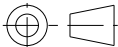


D



VIEW A

SHT.2



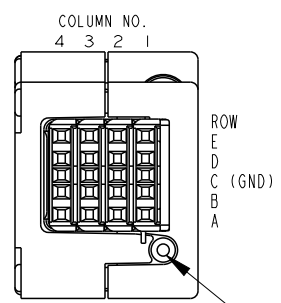
dr	Deborah Ingram	2009/03/26	<div>projection</div> <div></div>	<div>MM</div> <div></div>	size	A4	scale	1:2		
eng	Dong Tang	2015/08/04			ecn no				ELX-N-21590-1	
chr	-	-			rel level				Released	
appr	Frank Mao	2015/08/25	product family		C&A					
		title			CABLE ASSEMBLY			dwg no	10077488	rev
DENSI-SHIELD I/O 8 PAIR										
www.fci.com		cat. no.		-		Product - Customer Drw			sheet 1 of 5	

PRODUCT NUMBER
10077488-XXXXXXLF

TABLE 1
PIN OUT/WIRING LIST
SEE NOTE 5

END P1		END P2	
PIN NUMBER	WIRE ID	PIN NUMBER	WIRE ID
C1-C4	GROUND	C1-C4	GROUND
A1	TN1	E1	RN1
B1	TP1	D1	RP1
D1	RP2	B1	TP2
E1	RN2	A1	TN2
A2	TN6	E2	RN6
B2	TP6	D2	RP6
D2	RP7	B2	TP7
E2	RN7	A2	TN7
A3	TN8	E3	RN8
B3	TP8	D3	RP8
D3	RP3	B3	TP3
E3	RN3	A3	TN3
A4	TN5	E4	RN5
B4	TP5	D4	RP5
D4	RP4	B4	TP4
E4	RN4	A4	TN4

DW_x = DRAIN WIRE _x
RP_x = RECIEVER PAIR _x, POSITIVE POLE
RN_x = RECIEVER PAIR _x, NEGATIVE POLE
TP_x = TRANSMITTER PAIR _x, POSITIVE POLE
TN_x = TRANSMITTER PAIR, NEGATIVE POLE



VIEW A
SCALE 2:1
VIEWED FROM
MATING SIDE

HEXAGON SCREW

dr	Deborah Ingram	2009/03/26			size	A4	scale	1:2			
eng	Dong Tang	2015/08/04			ecn no	ELX-N-21590-1					
chr	-	-			rel level	Released					
appr	Frank Mao	2015/08/25	product family		C&A						
		title			CABLE ASSEMBLY		dwg no				
					DENSI-SHIELD I/O 8 PAIR		10077488				
www.fci.com		cat. no.		-	Product - Customer Drw			rev			
								AB			
					sheet 2 of 5						



Copyright FCI.

PRODUCT NUMBER
10077488-XXXXXXXXLF



TABLE 2 LABEL'S					
		P1 END		P2 END	
OPTION-SEE NOTE 4	ITEM	PI	CENTER	CENTER	P2
A	A	SEE NOTE 4	-	-	-
B	D	WLCP-X105	4022.636.07432	4022.636.07432	NTWT UCB-X2
B	E	WLCP-X106	4022.636.07422	4022.636.07422	NTWT UCB-X3
B	F	WRCP-X108	4022.636.07393	4022.636.07393	NTWT UCB-X2
B	I	WRCP-X107	4022.636.07403	4022.636.07403	NTWT UCB-X3
B	J	SPMR-S13X101	4022.636.02533	4022.636.02533	WLCP-X102
B	K	SPMR-S14X101	4022.636.02543	4022.636.02543	WLCP-X101
B	L	WRCP-X104	4022.636.04243	4022.636.04243	SPMR-S14X102
B	M	WRCP-X103	4022.636.04253	4022.636.04253	SPMR-S12X101
B	S	IFSR-S09X101	4022.646.07121	4022.646.07121	GCB-X2
B	T	IFSR-S06X101	4022.646.07131	4022.646.07131	GCB-X3
B	U	APE 398-X2	4022.646.07002	4022.646.07002	GCB-X4
B	V	APE 398-X1	4022.646.07012	4022.646.07012	GCB-X5
B	W	WLCP-X106	4022.646.55131	4022.646.55131	UCB-X3
B	X	WLCP-X105	4022.646.55141	4022.646.55141	UCB-X2
B	Y	WRCP-X108	4022.646.55371	4022.646.55371	UCB-X2
B	Z	WRCP-X107	4022.646.55381	4022.646.55381	UCB-X3
B	6	GCB-X4	4022.664.32451	4022.664.32451	APE 398-X2
B	7	GCB-X5	4022.664.32461	4022.664.32461	APE 398-X1

dr	Deborah Ingram	2009/03/26	<div>projection</div> <div></div>	<div>MM</div> <div></div>	size	A4	scale	1:2		
eng	Dong Tang	2015/08/04			ecn no ELX-N-21590-1					
chr	-	-			rel level Released					
appr	Frank Mao	2015/08/25	product family		C&A					
<div>FCi</div>		title			CABLE ASSEMBLY			dwg no	10077488	rev
		DENSI-SHIELD I/O 8 PAIR								
www.fci.com		cat. no.		-	Product - Customer Drw				sheet 3 of 5	

PRODUCT NUMBER
10077488-XXXXXXXXLF

NOTES:

1. MATES WITH FCI PART NUMBERS 10044471 SERIES.

2. UNLESS OTHERWISE SPECIFIED ASSEMBLED LENGTH TOLERANCE = +48mm/-0mm

3. PART NUMBER DESCRIPTION/DENSI-SHIELD CONNECTOR:

10077488 - N XX XX X D LF

WIRE GAGE

N: 26 AWG

LF: LEAD FREE (NOTE 9)

HARDWARE TYPE

D: HIGH SPEED VERSION + INTRA-HEXAGON SCREW VERSION

ITEM LETTER IN TABLE 2

LENGTH "DIM L"

XXXX: XX METERS, XX CENTIMETERS

EXAMPLES OF LENGTH GIVEN BELOW:

0046 = 00 METERS 46 CENTIMETERS

0500 = 05 METERS 00 CENTIMETERS

EXAMPLE: 10077488-N0500BDLF = 26 AWG, 05 METER, 00 CENTIMETERS, HIGH SPEED + HEXAGON SCREW, AND IS LEAD FREE

4. LABEL INFORMATION:

OPTION A

-FCI

-FCI PART NUMBER

-DATE CODE(Y Y/M M/D D) - SERIAL NUMBER

-CUSTOMER PART NUMBER

-COUNTRY ORIGIN

OPTION B & C

FOR 10077488-N01006DLF, WE SHOULD STICK ONLY ONE LABEL IN THE CENTER.

THE MARKING SIZE HEIGHT OF THE TEXT 2.5mm±0.1mm MINIMUM USE

SanSerif Font

TEST LEVEL

EXAMPLE: A-D (ENCIRCLING AFTER TESTING THE CABLE ASSEMBLY) PROTECTIVE LABEL

ENCIRCLING (A-D) LETTERS IN EACH LABEL AFTER PAST FINAL ELECTRICAL TEST.

SERIAL NUMBER

THE SERIAL NUMBER MUST BE SET UP AS FOLLOWS:

- TWO CHARACTERS REPRESENTING THE YEAR (E.G.: 07 FOR 2007)
- TWO CHARACTERS REPRESENTING THE WEEK NUMBER (E.G.: 20)
- THREE CHARACTERS REPRESENTING THE SERIES CODE (E.G.: 003)
- THREE CHARACTER VENDOR ID, AGREED WITH ASML-SCE (E.G.: ASM)
- SEE EXAMPLE BELOW:

FONT SHALL BE CLEARLY VISIBLE AND BLACK IN COLOR.

ENCIRCLE A-D LETTERS
AFTER PASSING FINAL
ELECTRICAL TEST

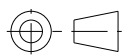
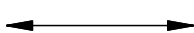

4022.636.0830
(A-D) 0720003 ASM

dr	Deborah Ingram	2009/03/26	<div>projection</div> <div></div>	<div>MM</div> <div></div>	size	A4	scale	1:2	
eng	Dong Tang	2015/08/04			ecn no	ELX-N-21590-1			
chr	-	-				rel level			Released
appr	Frank Mao	2015/08/25	product family		C&A				
		title			CABLE ASSEMBLY	dwg no		rev	
					DENSI-SHIELD I/O 8 PAIR	10077488		AB	
www.fci.com		cat. no.	-	Product - Customer Drw			sheet 4 of 5		

PRODUCT NUMBER
10077488-XXXXXXLF

NOTES CONTINUED:

5. ALL CABLE ASSEMBLIES SHALL BE TESTED 100% FOR CONTINUITY AS DEFINED IN WIRING LIST.
6. UNLESS OTHERWISE SPECIFIED ALL CABLE ASSEMBLIES SHALL BE 100% HI-POT TESTED PER PRODUCT SPECIFICATION: GS-12-314.
7. OTHER TESTING PERFORMED AS REQUIRED BY PRODUCT SPECIFICATION: GS-12-314.
8. THIS DIMENSION IS A FINISHED PRODUCT LENGTH.
9. LEAD FREE PRODUCTS MEET EUROPEAN UNION DIRECTIVES AND OTHER COUNTRY REGULATIONS AS DESCRIBED IN GS-47-0004.
10. CONNECTOR ASSEMBLIES SHOWN ARE FOR REFERENCE ONLY AND MAY NOT SHOW ALL PART DETAIL. REFERENCE CONNECTOR ASSEMBLY DRAWINGS FOR COMPLETE DETAILS.
11. PACKAGING PER GLOBAL STANDARD GS-14-1272.
12. MATERIALS:
COVERS: ZINC ALLOY, Cu-Ni-Sn PLATED.
SHEET METAL COVER: STAINLESS STEEL
FERRULES: COPPER ALLOY, Ni-Sn PLATED
TERMINAL BLOCK:
-HOUSING: THERMOPLASTIC
-TERMINALS: COPPER ALLOY, FINISH: MIN 0.8um Au ON
-Ni-UNDER LAYER IN CONTACT AREA.
-TRANSITION BOARD: FR4 FIBERGLASS FILLED EPOXY.
-HEXAGON SCREW: STAINLESS STEEL
-SCREW STOP: TEFLON
13. FOR OPTION C, APPLY TWO CABLE TIE ON CABLE.

dr	Deborah Ingram	2009/03/26	<div>projection</div> 	<div>MM</div> 	size	A4	scale	1:2				
eng	Dong Tang	2015/08/04			ecn no	ELX-N-21590-1						
chr	-	-			rel level	Released						
appr	Frank Mao	2015/08/25	product family		C&A							
			title		CABLE ASSEMBLY			dwg no	10077488	rev	AB	
					DENSI-SHIELD I/O 8 PAIR							
www.fci.com			cat. no.		-	Product - Customer Drw				sheet 5 of 5		