

# JRC SAW FILTER

## NSVS1105

Application

### 422.2MHz SAW FILTER

Electrical Specification: (Table 1)

The device characteristics are measured in the circuit shown in Fig.1.

Table 1. Electrical Specifications

Item		Spec.
Input and Output Impedance		50Ω
Nominal Center Frequency (f0)		422.2MHz
Insertion Loss	421.7~422.7MHz	3.5dB max.
Response Variation	421.7~422.7MHz	1.5dB max.
Input and Output VSWR	421.7~422.7MHz	2.5 max.
Out of Band Rejection (Relative to Through Level)	400.8 MHz	50dB min.
	443.6 MHz	45dB min.

Temperature Range: -10~+60°C

Maximum Rating: (Table 2)

Table 2. Maximum Ratings

Item	Rating
Maximum Input Power	+20dBm
Maximum DC Voltage	7.5V
Operating Temperature Range	-10~+60°C
Storage Temperature	-20~+70°C

Mechanical Specifications: (Fig.2)

Package is designed as small as 3.0x3.0x1.15[mm<sup>3</sup>] for SMD (Surface Mount Device) type.

#### Notice:

This part is electrostatic discharge sensitive and may be damaged by improper handling.

Communications Equipment Division  
Communications Equipment Marketing Department

***Japan Radio Co., Ltd.***

10-1 Nishi-Shinjuku 6-chome, Shinjuku-ku,

Tokyo. 160-8328 Japan

Tel. +81 3-3348-3845

Fax. +81 3-3348-3935

<http://www.jrc.co.jp/jp/product/device/saw/index.html> (Japanese)

[http://www.jrc.co.jp/eng/product/comm/device/saw/saw\\_top\\_e.html](http://www.jrc.co.jp/eng/product/comm/device/saw/saw_top_e.html) (English)

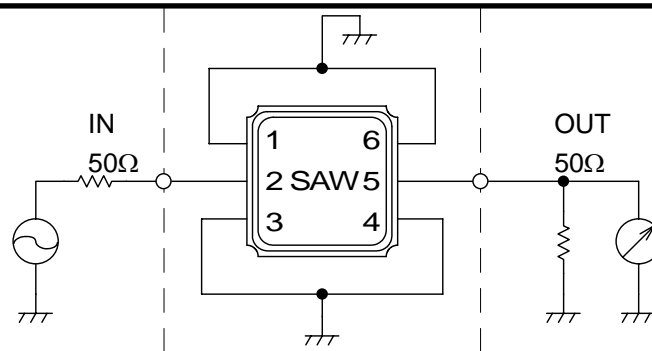


Fig.1 Measuring circuit

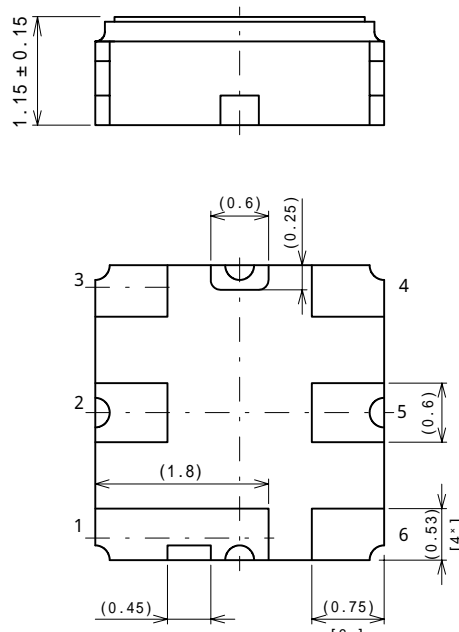
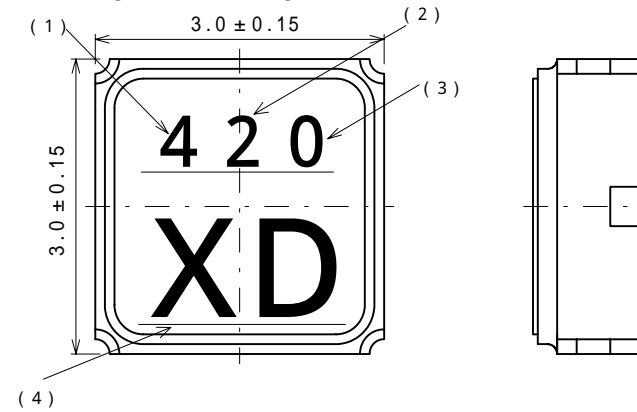


Fig.2 Package dimensions (in mm)

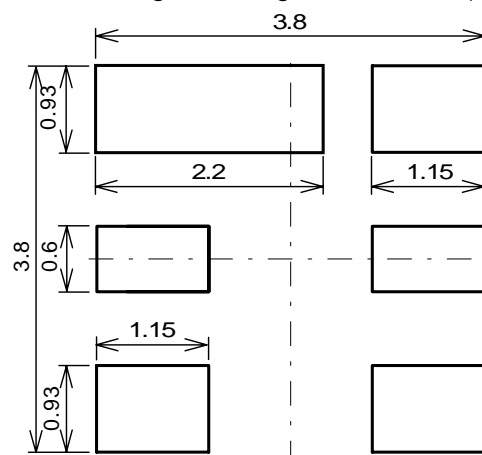


Fig.3 Desirable land area (in mm)

マーキング方法・・・レーザーマーカ

表示内容

(1) 製造年 (西暦の下1ケ)

(2) 製造月

但し 10月...X

11月...Y

12月...Z

(3) 製造日

但し 1~9日...0

10~19日...1

20~31日...2

(4) 品種種別記号

No.	接 続
1	GND
2	IN / OUT
3	GND
4	GND
5	OUT / IN
6	GND

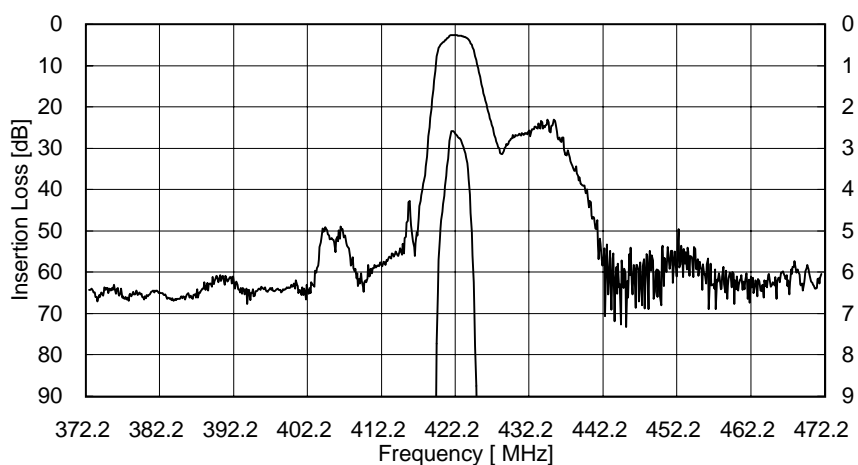
**Notice**

1. Use this component within operating temperature range. It might not be satisfied with electrical specification without operating temperature range. When it is used less than -10°C or more than +60°C, it might be a cause of degradation or destruction of the component. Even if it endures during a short time, it causes degradation of qualification.
2. When soldering iron is used, solder with the temperature at the tip of soldering iron: 350°C max., the time of soldering: 10 seconds max., the power of soldering iron: 30W max..
3. Notice that the allowed time of soldering with soldering iron is accumulated time, when soldering is repeated.
4. As rapid temperature change for cleaning after reflow soldering might be a cause of destruction clean this component after confirming that temperature of this component goes down to room temperature.
5. Confirm that there are not any influence for qualification to this component in mounting on PCB when this component is cleaned.
6. As it might be a cause of degradation or destruction to apply static electricity to this component, do not apply static electricity or excessive voltage while assembling and measuring. And do not transport this component with bare hand.
7. As it might be a cause of degradation or destruction to apply D.C. voltage between each terminal, apply D.C. voltage 7.5V max. in actual circuit.

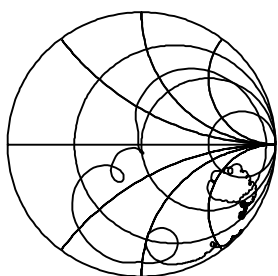
**Note**

1. This specification specifies the quality of this component as a single unit. Make sure that this component is evaluated and confirmed against this specification when it is mounted to your products.

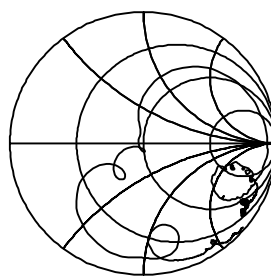
# 422.2MHz SAW Filter FREQUENCY CHARACTERISTICS



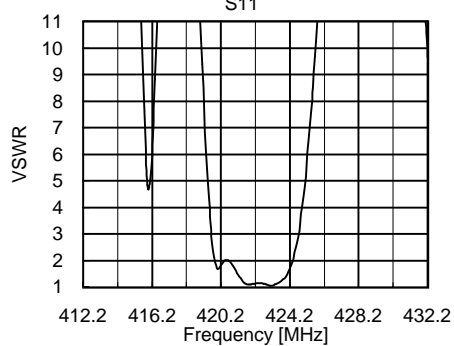
S11



S22



S11



S22

