

## AMOS Series

NEW

VIA

# AMOS-3000

Ultra Compact Fanless  
Embedded System for Pico-  
ITX EPIA-P700 Embedded  
Board

## Features

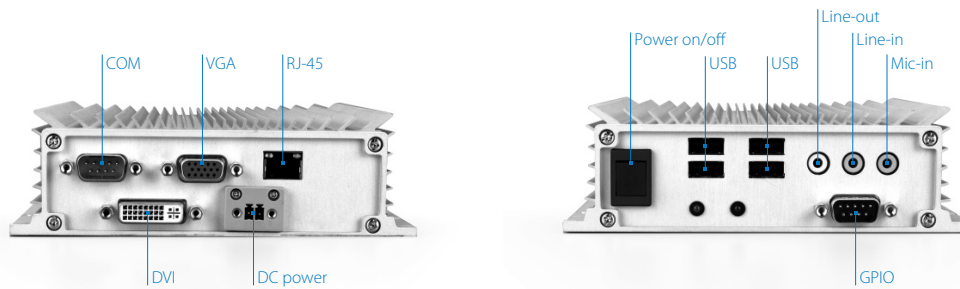
- A fanless, ultra compact embedded chassis supporting EPIA-P700 embedded board
- Slim size with stylish ID and full sealed of aluminum design and few mechanical parts
- Additional extension sub-system chassis for 2.5" SATA hard drive storage chassis
- Optimized integration with front and rear I/O access
- Supports dual independent display
- Supports Gigabit Ethernet and WiFi networking options
- Embedded OS Ready platform
- Multiple mounting solutions: Wall / Table / VESA mountable
- Fanless design for space and environment critical applications



## Specifications

Part Number		AMOS-3000-1C10A1
Processor System	Processor	1.0GHz VIA C7® (optional support 500 MHz VIA Eden™ ULV processor. Part Number: AMOS-3000-1E05A1)
	Chipset	VIA VX700 Unified Digital Media IGP chipset
	BIOS	Award BIOS 4/8 Mbit flash ROM
	System Memory	1 x DDR2 533, 200-pin SDRAM SODIMM socket Up to 1 GB memory size
Display	VGA	Integrated VIA UniChrome™ Pro II 3D/2D AGP graphics with MPEG-2/4 and WMV9 decoding acceleration
	Display Memory	Optimized Unified Memory Architecture (UMA) Supports up to 128 MB frame buffer using system memory
	Display Interface	Supports CRT and DVI-D interface
LAN	Controller	1 x VIA VT6122 Gigabit Ethernet controller
	Interface	1 x RJ45 connector
System Board Support	Compatibility	Compatible with EPIA-P700 embedded board
Drive Bay	DOM Flash Drive	Driver bay for 44-pin IDE interface Disk On Module (DOM) Flash drive
Storage Expansion	HDD bay	Optional storage sub-system expansion chassis, supporting a 2.5" SATA hard disk drive bay
Cooling System	Heatsink	Built-in heatsink and heatpie set
HD Audio	Controller	VIA VT1708A High Definition Audio Codec
	Interface	Support Line-in, Line-out, Mic-in
Others	Watchdog Timer	System reset. Programmable 1 ~ 255 sec
	Serial Ports	Built-in EPIA-P700 system board . VIA Super I/O LITE VT1212 controller, supporting one COM port
	USB	4 x USB 2.0 ports
	GPIO	1 of 2x6-pin headers supports 8-bit GPIO + 5V power source
Chassis Construction	Construction	Aluminum top cover mixed with copper heatpie. Metal chassis housing
	Material	Aluminum top cover and SECC front/rear/bottom plate
Front I/O Ports	Audio Line-in	1 x Front-access Line-In port by a 3.5 Ø audio jack connector
	Audio Line-out	1 x Front-access Line-out port by a 3.5 Ø audio jack connector
	Audio Mic-in	1 x Front-access Mic-in port by a 3.5 Ø audio jack connector
	USB	4 x Front-access USB ports by two pairs of double-stack of mini-DIN connectors
	GPIO	1 x Front-access GPIO port by a D-Sub 9-pin female connector
Rear I/O Ports	VGA	1 x Rear-access VGA port by a D-Sub 15-pin female connector
	DVI	1 x Rear-access DVI Port by a D-Sub 24-pin female connector metal face plate
	Giga LAN	1 x Rear-access Gigabit Ethernet port by a RJ-45 connector
	COM	1 x Rear-access COM port by a D-Sub 9-pin male connector

## System I/O



## Specifications

<b>Part Number</b>		<b>AMOS-3000-1C10A1</b>
<b>Power Supply</b>	<b>Power Source</b>	DC Input 12 V
	<b>Power Input Connector</b>	DC Power Input connector by 2-pole Phoenix connector
	<b>Power ON/OFF</b>	One DC Power on/off switch
	<b>Power Consumption</b>	Maximum 15.86 W. Typical 8.11 W
	<b>Input Voltage</b>	12 VDC @ 0.68 A
<b>Mechanical Specifications</b>	<b>Mounting</b>	Supports table mount, wall mount, and VESA mount
	<b>System Indicator</b>	1 x Power on LED (green) 1 x HDD LED (red)
	<b>Weight</b>	Net 1 kg
	<b>Dimension</b>	135 mm (W) x 45 mm (H) x 131 mm (D). Width 150 mm with mounting bracket
<b>Environmental Specification</b>	<b>Operation Temperature</b>	Supports from -20 up to 70°C: • -20 to 60° C for C7® 1.0GHz SKU (Part Number: AMOS-3000-1C10A1) • -20 to 70° C for Eden™ ULV 500MHz SKU (optional. Part Number: AMOS-3000-1E05A1)
	<b>Relative Humidity</b>	Humidity: 0 ~ 90% @ 45°C, non-condensing
	<b>Vibration Loading During Operation</b>	With IDE DOM flash drive 7Grms, IEC 60068-2-64, random, 5 ~ 500Hz, 1 Oct/min, 1hr/axis With Hard Disk Drive, 1Grms, IEC 60068-2-64, random, 5 ~ 500Hz, 1 Oct/min, 1hr/axis
	<b>Shock During Operation</b>	With IDE DOM flash drive 70G, IEC 60068-2-27, half size, 11ms duration With Hard disk drive 20G, IEC 60068-2-27, half size, 11ms duration
	<b>Certification</b>	CE/FCC/CCC Class A

## Ordering Information

Part Number	CPU Frequency	Description
AMOS-3000-1C10A1	1.0 GHz C7®	1.0 GHz C7® Based Fanless Ultra Compact Embedded System, with 1 x VGA, 1 x DVI, 1 x COM, 1 x GigaLAN, 4 x USB, HD Audio, DC-in 12V
AMOS-3000-2C10A1	1.0 GHz C7®	AMOS-3000-1C10A1 Installed with Storage Chassis, SATA HDD Cable, SATA Power Cable

## Optional Accessories

<b>External AC-to-DC Adapter and Power Cable</b>	
Part Number	Description
99G63-020095	AC-to-DC adapter, 2-pole, DC 12V/5A, 60W
99G33-02032C	Power cable, 180 cm, USA type
99G33-02034C	Power cable with PSE mark
99G33-02033C	Power cable, 180 cm, Europe type
99G33-02031C	Power cable, 180 cm, UK type

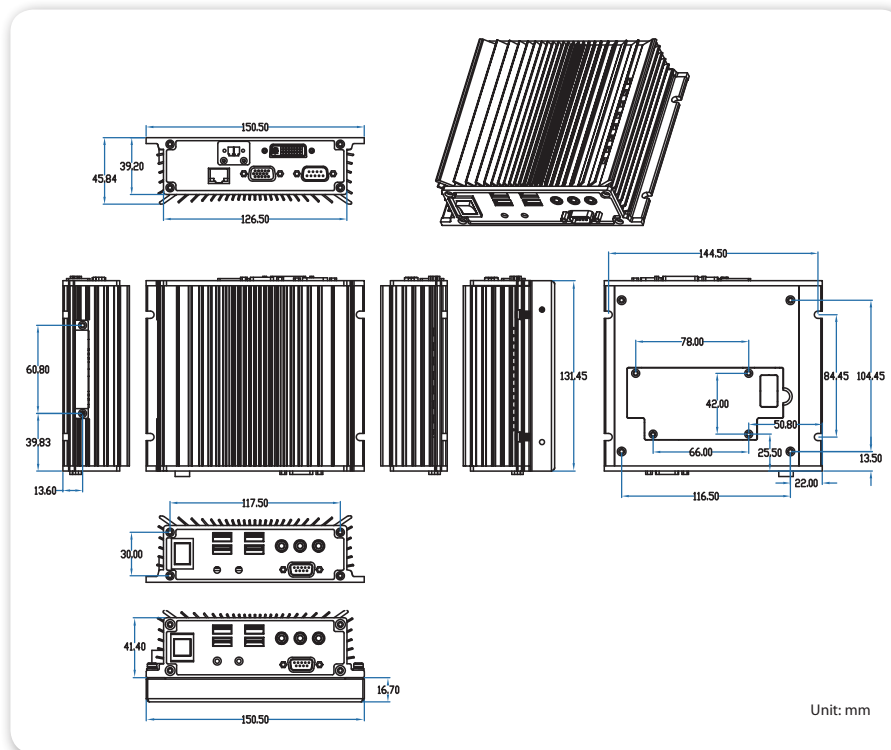
## Optional Accessories

WLAN USB Module	
Part Number	Description
EMIO-1530-20A1	802.11 b/g Wireless LAN USB module with cable for AMOS-3000, USA
EMIO-1530-30A1	802.11 b/g Wireless LAN USB module with cable for AMOS-3000, Europe

Embedded OS (Only available for OEM service)	
Part Number	Description
POS-MXPELI-ENS01	Windows XP Embedded SP2 Feature Pack 2007 OS image and license for AMOS-3000, English version
POS-MCE6LI-ENS01	Windows CE 6.0 Professional OS image and license for AMOS-3000, English version
VOS-UMELXI-ENS01	Linux Mobile Internet Device Edition OS image For AMOS-3000 English version

Certified RAM Module, Flash Disk	
Part Number	Description
99G06-010328	512MB DDR2 667MHZ SDRAM SODIMM, industrial grade, temperature 0°C ~ 85°C
99G06-010338	1GB DDR2 667MHZ SDRAM SODIMM, industrial grade, temperature 0°C ~ 85°C
99G61-050203	512MB, IDE 44-pin Flash Disk On Module(DOM) , industrial grade , wide temperature -40°C ~ 85°C , w/ housing
99G61-050143	1GB, IDE 44-pin Flash Disk On Module(DOM) , industrial grade, wide temperature -40°C ~ 85°C , w/ housing
99G61-050133	2GB, IDE 44-pin Flash Disk On Module(DOM) , industrial grade, wide temperature -40°C ~ 85°C , w/ housing
99G61-050123	4GB, IDE 44-pin Flash Disk On Module(DOM) , industrial grade, wide temperature -40°C ~ 85°C , w/ housing

## Dimensions



## Packing List

- 1 x Driver CD disk
- 1 x Screw package for mounting purpose
- 1 x VESA mount metal plate
- 1 x Washer rubber for table set up
- 1 x Thermal pad for memory
- 1 x 2-pin Phoenix connector to DC jack cable