

NOTES:

1. THIS INSERT IS DESIGNED FOR USE IN RAYCHEM CONNECTOR HOUSING MTC100-JH2-XXX. (SEE RAYCHEM INFORMATION DRAWING D-659-0097 AND HOUSING SPECIFICATION CONTROL DRAWINGS FOR FURTHER DETAILS).
2. PART DESCRIBED HEREON IS SUPPLIED AS SHOWN. IF CONTACTS, SEALING PLUGS, AND TOOLS ARE DESIRED, THE FOLLOWING MODIFICATION NUMBER IS TO BE ADDED TO THE PART NUMBER ON THE KIT PACKAGING LABEL ONLY:

MOD NO.	DESCRIPTION
022	WITH CONTACTS AND SEALING PLUGS
023	WITH CONTACTS, SEALING PLUGS AND TOOL

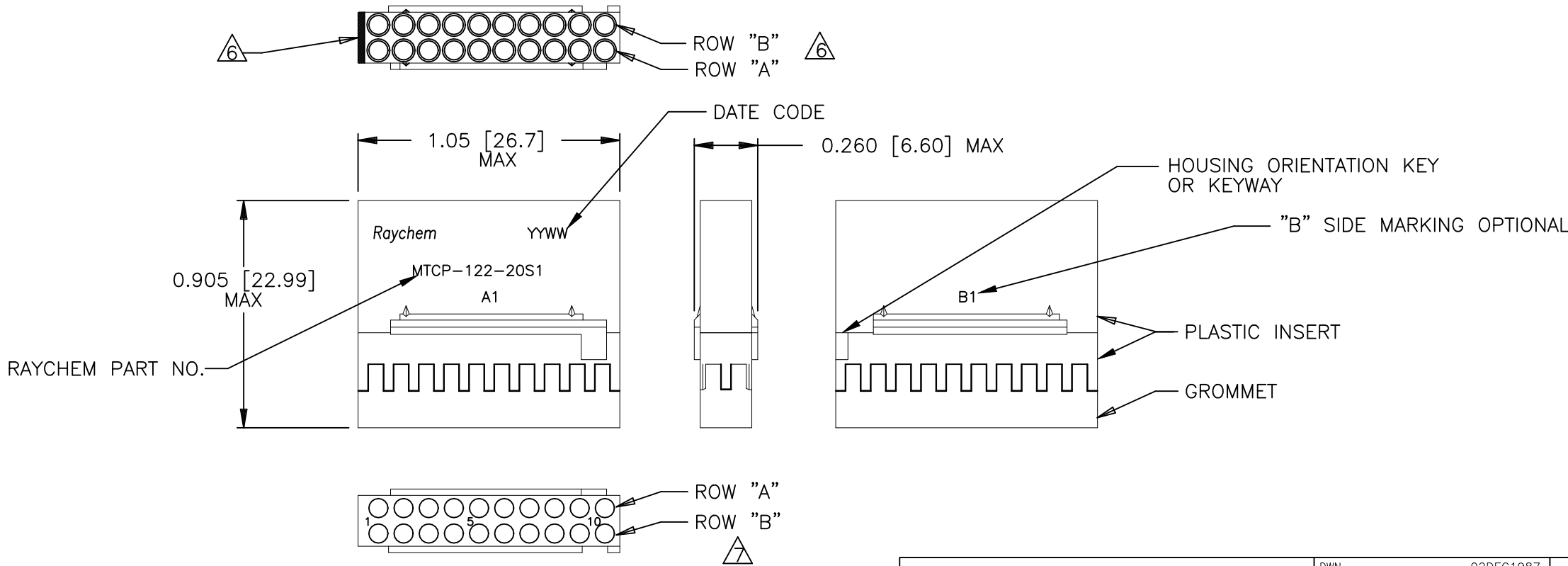
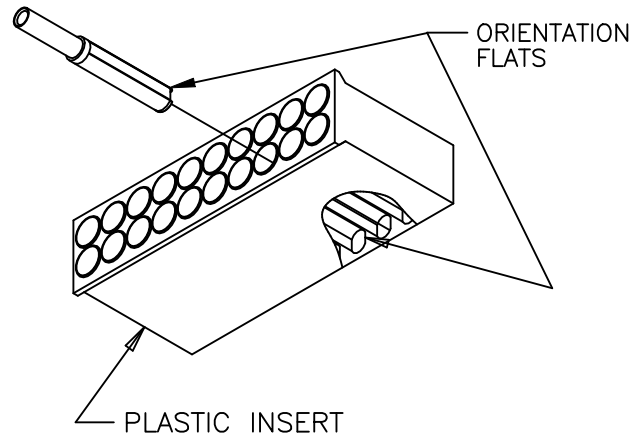
REFERENCE RAYCHEM INFORMATION DRAWING D-659-0097 FOR CRIMP TOOLS OR ADDITIONAL CONTACTS, SEALING PLUGS OR TOOLS.

3. GROMMET DESIGNED TO SEAL ON WIRES HAVING AN INSULATION DIAMETER OF 0.030 TO 0.065.

4. PERFORMANCE:
THIS PRODUCT IS DESIGNED TO MEET THE APPLICABLE REQUIREMENTS OF RAYCHEM SPECIFICATION C-6115.

5. MATERIALS:
- | | |
|--|--|
| A) PLASTIC INSERT | HIGH GRADE POLYARYLENE THERMOPLASTIC |
| B) GROMMET | FLUOROSILICONE PER MIL-R-25988 |
| C) RETENTION CLIPS (20)
(INSIDE PLASTIC INSERT) | BERYLLIUM COPPER 172 PER QQ-C-533 OR
301 STAINLESS STEEL PER TEC-100-309 SPECIAL TEMPER |

6. NUMBER ONE (1) CAVITIES ARE MARKED IN CONTRASTING COLOR. ROWS "A" AND "B" ARE AN INTEGRAL PART OF THE INSERT. ROWS "A" AND "B" ARE IDENTIFIED ON THE SIDE OF THE INSERT AS "A1" AND B1". "B" SIDE MARKING OPTIONAL.



THIS DRAWING IS A CONTROLLED DOCUMENT.		DWN HAWKINGS	02DEC1987	TE Connectivity			
DIMENSIONS: INCHES		CHK —	—	NAME INSERT, SOCKET, PRIMARY, 20 CAVITY, SIZE 22-20 REM CONTACT, 2-IN CONN MTC100 SERIES			
		APVD J. CAMERON	16MAR1998	SIZE A3			
		PRODUCT SPEC —	—	CAGE CODE 00779			
TOLERANCES UNLESS OTHERWISE SPECIFIED:		APPLICATION SPEC —	—	DRAWING NO C-MTCP-122-20S1			
MATERIAL —		FINISH —	—	RESTRICTED TO —			
		WEIGHT 0.0063 lbs	—	SCALE 1:1			
		CUSTOMER DRAWING		SHEET 1 OF 1		REV K	