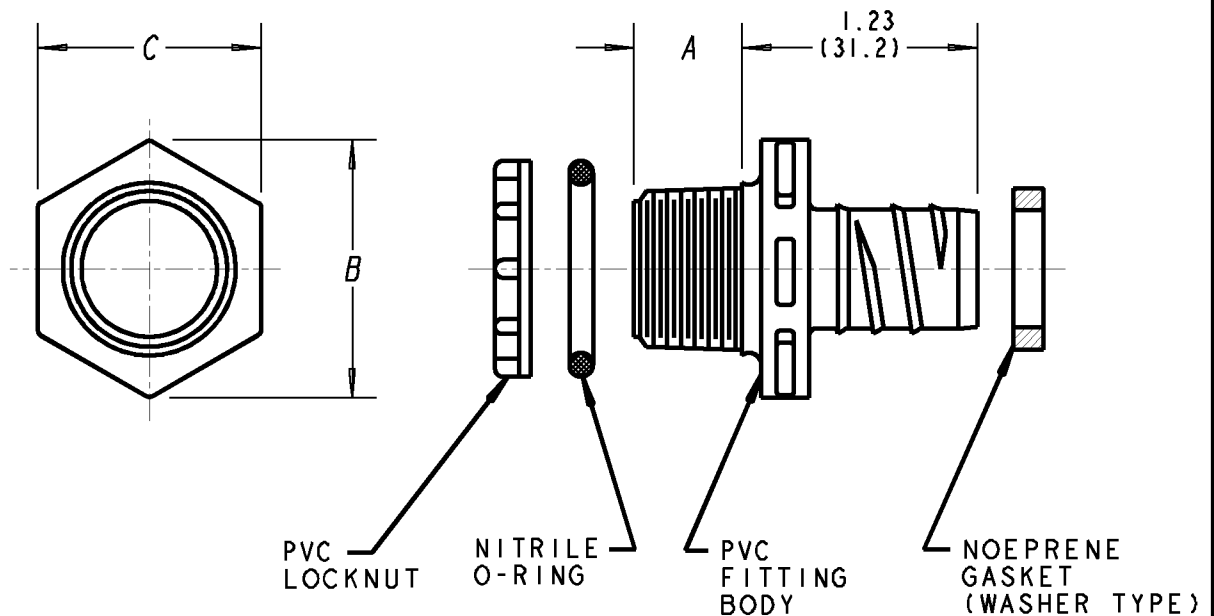


Carlon®

SIZE	PART NUMBER	THREAD SIZE	A	B	C
1/2"	LN43DA LN43DACL LN43DA-CTN LN43DAL	1/2-14NPT	0.56 (14.2)	1.34 (34.0)	1.19 (30.2)
3/4"	LN43EA LN43EACL LN43EA-CTN LN43EAL	3/4-14NPT	0.56 (14.2)	1.63 (41.4)	1.44 (36.6)
1"	LN43FA LN43FA-CAR	1-11-1/2NPT	0.69 (17.5)	1.99 (50.5)	1.75 (44.5)

ASSEMBLY NOTES

1. CUT CONDUIT SQUARE AND CLEAN.
2. PUSH WASHER UP AGAINST STOP ON CONDUIT SIDE OF FITTING.
3. PULL O-RING OVER O-RING GROOVE ON NPT SIDE OF FITTING.
4. SCREW CONDUIT ONTO FITTING UNTIL IT CONTACTS WASHER OVER ENTIRE CIRCUMFERENCE.
5. PLACE FITTING INTO KNOCKOUT AND TIGHTEN LOCKNUT (NOT FITTING).



GENERAL NOTES

1. ALL DIMENSIONS ARE FOR REFERENCE ONLY.
2. DIMENSIONS IN BRACKETS [] ARE IN METRIC UNITS.

REVISIONS

SEE ERN (****) FOR APPROVAL SIGNATURES & RELEASE DATE.
PROJECT NO: ****

Thomas & Betts
www.tnb.com

DESCRIPTION: **STRAIGHT CARFLEX SPIRAL FITTING**

ORIGINAL PROJECT NO / (ERN NO)

/ ()

SHEET NO:

1 OF 1

REV. NO:

D

DRAWING NO:

WSD-AC00827