

MICRO SWITCH

FREEPORT ILLINOIS, U.S.A
A DIVISION OF HONEYWELL

FED. MFG. CODE 91929

MAGNET

CATALOG LISTING

103MG10

X112337-MG

CATALOG LISTING

103MG10

PAGE 1 OF 1

REPLACES

RELEASE NO. PR-24099

ISSUE

3

CHECK

REVISIONS

A	CO-95574
	J J A
	3 JAN 00
B	206549
	CSL
	1 OCT 02

CHECK

26 JULY 99

J A F

26 JULY 99

CHECK

26 JULY 99

J J A

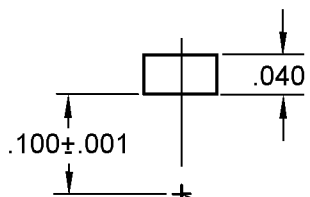
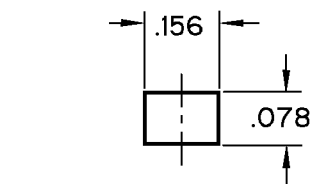
RASTER

FO-52848-A

DRAWN

NOTES

- 1 - THE MAGNET IS RARE EARTH MAGNETIZED AND CONDITIONED FOR OPERATION
- 2 - READING IN GAUSS WITH F.W. BELL 620 GAUSS METER OR EQUIVALENT AND PROBE STJ4-0402 OR EQUIVALENT AT $.100 \pm .001$ INCHES FROM SOUTH POLE AT TEMPERATURE OF $25 \pm 1^\circ\text{C}$ SHALL BE 255 GAUSS MINIMUM
- 3 - POLES NOT MARKED
- 4 - PACKED 125 PIECES EACH TUBE
- 5 - ABSOLUTE MAXIMUM TEMPERATURE RATING 200°C , MAGNETIC PERFORMANCE DEGRADES ABOVE THIS TEMPERATURE

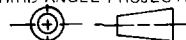


LOCATION OF HALL PROBE

ANSI Y14.5M-1982 APPLIES

THIS DRAWING COVERS A PROPRIETARY ITEM AND IS THE PROPERTY OF MICRO SWITCH, A DIVISION OF HONEYWELL. THIS DRAWING IS NOT TO BE COPIED OR USED WITHOUT THE APPROVAL OF MICRO SWITCH.

THIRD ANGLE PROJECTION



CHARACTERISTICS

ELECTRICAL DATA

CONTACT ARRANGEMENT

SCALE 5:1

DO NOT SCALE PRINT

TOLERANCES

APPLY TO DESIGN UNITS. CONVERSIONS ARE ONLY FOR REFERENCE. UNLESS NOTED, TOLERANCES ARE \pm

	DIM. mm	TOL. mm/in	DIM. in	TOL. mm/in
NO PLACES	X	1/.04	X	0.01/03
ONE PLACE	X,X	0.4/.015	X,X	0.38/.015
TWO PLACES	X,X,X	0.15/.006	X,X,X	0.13/.005
THREE PLACES	X,X,X,X		X,X,X,X	
ANGLES				

SI METRIC

US CUSTOMARY

DESIGN UNITS ☐

WEIGHT

Mouser Electronics

Authorized Distributor

Click to View Pricing, Inventory, Delivery & Lifecycle Information:

[Honeywell:](#)

[103MG10](#)