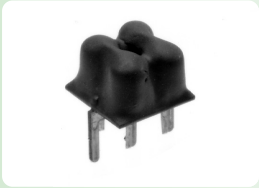


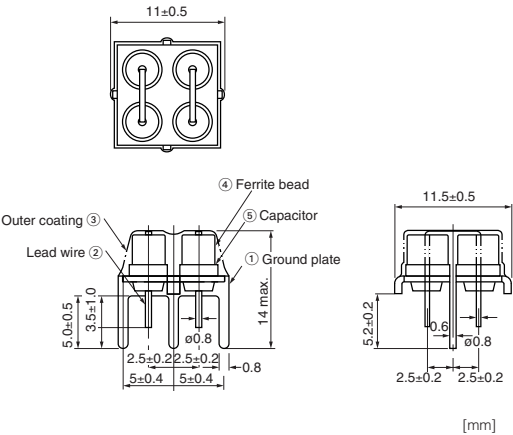
EJ Series
[RoHS Compliant]



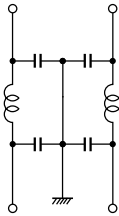
Model	Rated voltage DC (V)	Rated current (A) max.	Operating temperature range (°C)	Storage temperature range (°C)
EJ-2-332P	50	10	-25 to +85	-40 to +100

- Withstanding voltage: 300VDC, 1 to 5 seconds, between lines (INPUT-OUTPUT-GROUND)
- Insulation resistance: more than 1000MΩ (50VDC, one minute)

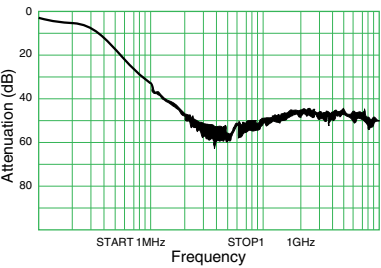
Shape and Dimensions



Circuit Diagram



Attenuation Characteristics



- All specifications in this catalog and production status of products are subject to change without notice. Prior to the purchase, please contact NEC TOKIN for updated product data.
- Please request for a specification sheet for detailed product data prior to the purchase.
- Before using the product in this catalog, please read "Precautions" and other safety precautions listed in the printed version catalog.