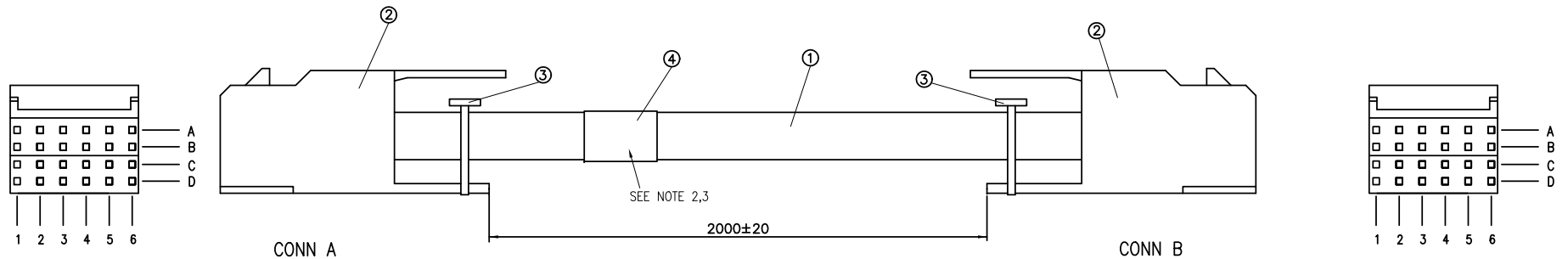



FCI Product number	length(L)
10115180-N0200YYLF	2000 mm



WIRE DIAGRAM

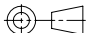
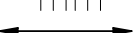
CONN A	CONN B	CABLE PAIR
A1	A1	1
B1	B1	
C1	C1	2
D1	D1	
A2	A2	3
B2	B2	
C2	C2	4
D2	D2	
A3	A3	5
B3	B3	
C3	C3	6
D3	D3	
A4	A4	7
B4	B4	
C4	C4	8
D4	D4	

NOTES:

- MATES WITH HEADER FCI PART NUMBER: 70232-116LF(24PIN)
- UNLESS OTHERWISE SPECIFIED ,LABEL POSITION SHALL BE APPROXIMATELY 50MM FROM REAR OF CONNECTOR
- UNLESS OTHERWISE SPECIFIED ,LABEL CONTENT SHALL CONTAINS THE BELOW:

 — FCI P/N
 — YYWW
- ALL CABLE ASSEMBLIES SHALL BE TESTED 100% FOR CONTINUITY AS DEFINED IN WIRING LIST
- UNLESS OTHERWISE SPECIFIED ALL CABLE ASSEMBLIES SHALL BE 100% HI-POT TESTED BY APPLYING DC 300V FOR MINIMUM OF 0.01S,CONTACTION RESISTANCE 5 Ohm,INSULATION RESISTANCE 20 M Ohm. UNLESS ACTIVE COMPONENTS ARE USED IN THIS ASSEMBLY.
- OTHER TESTING PERFORMED AS REQUIRED BY PRODUCT SPECIFICATION
- LEAD FREE PRODUCTS MEET EUROPEAN UNION DIRECTIVES AND OTHER COUNTRY REGULATIONS AS AS DESCRIBED IN GS-22-008
- CONNECTOR ASSEMBLIES SHOWN ARE FOR REFERENCE ONLY AND MAY NOT SHOW ALL PART DETAIL. REFERENCE CONNECTOR ASSEMBLY DRAWING FOR COMPLETE DETAILS.
- GLOBAL STANDARDS FOR CABLE PACKAGING: *****
- THIS DIMENSION IS A FINISHED PRODUCT LENGTH

④	label,w=25mm ref	1	EA
③	cable tie	2	EA
②	24pin metal connector,24~26AWG,standard latch	2	EA
①	raw cable,8pair,26AWG solid tinned copper,PVC jacket(black color), 100±15 Ohms,-30°C~+75°C,Rated Voltage 80V,	A/R	M
ITEM	DESCRIPTION	Q'TY	UNIT

rev	ecn no	dr	date
A	/	Tommy	3/19'12

www.fciconnect.com			surface	-	tolerance std	-	projection	mm
			TOLERANCES UNLESS OTHERWISE SPECIFIED					
Dr	Tommy Lin	2012-3-19	ANGULAR	LINEAR	0.X	±-		
Eng	Tommy Lin	2012-3-19			0.XX	±-		
Chr	Roger Cheng	2012-3-19	0°	±-	0.XXX	±-	size	A3
Appr	Jackson Wang	2012-3-19	Product family		C&A		ECN	-
							Spec ref	-
			title			10115180		Rev.
			catalog no			CUSTOMER		A
						sheet 1 of 1		

Mouser Electronics

Authorized Distributor

Click to View Pricing, Inventory, Delivery & Lifecycle Information:

[FCI / Amphenol:](#)

[10115180-N0200YYLF](#)