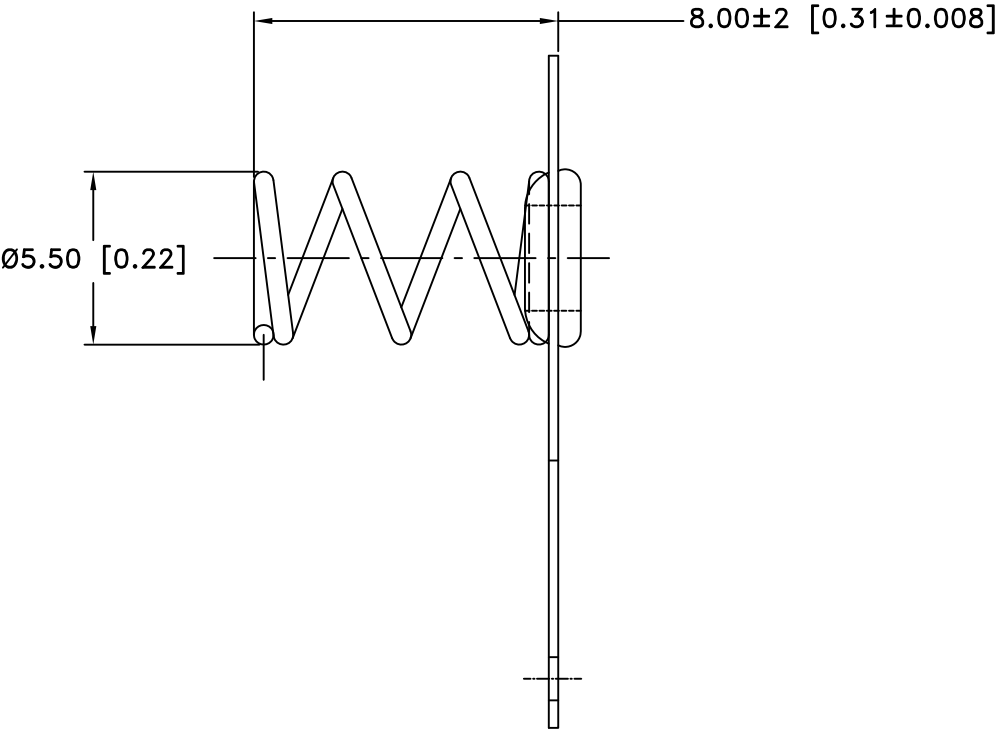
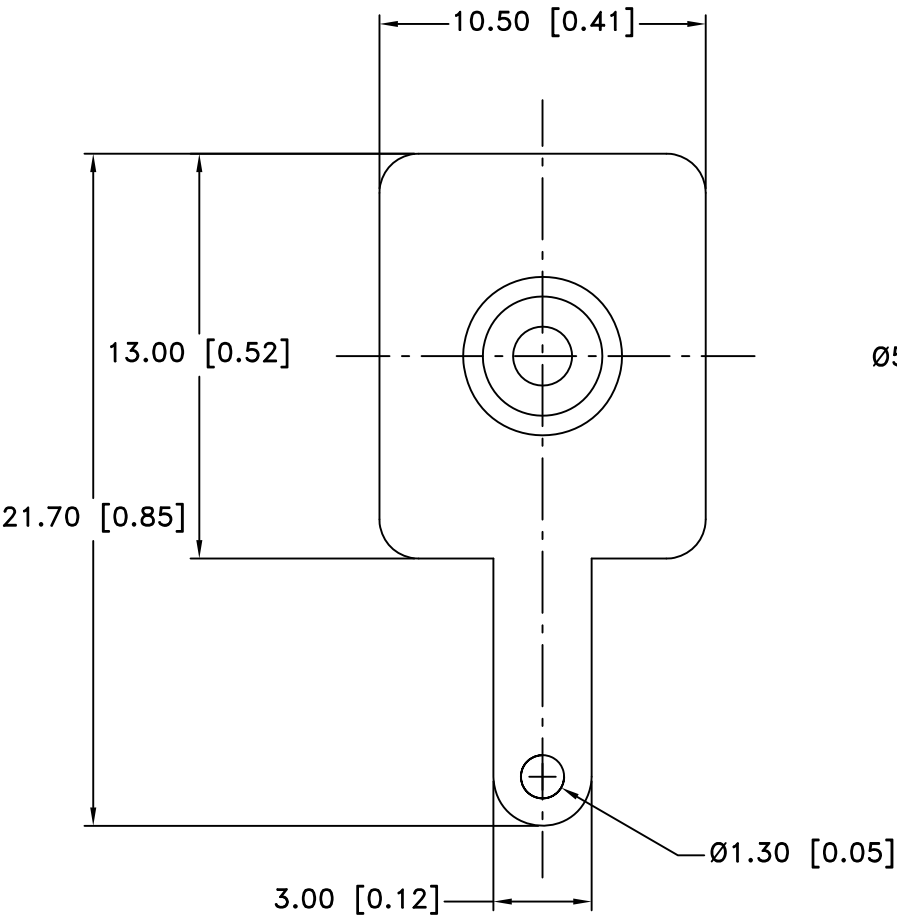



Date	SYM	REVISION RECORD	AUTH	DR.	CK.
10/22/05	E	ADDED "ROHS COMPLIANT"	T.B.	B.S.	
11/21/14	F	UPDATED TO ROHS 2 COMPLIANT	T.B.	B.S.	



NOTES:

1. BASE: STEEL, 0.3mm (0.012") THICK. ELECTROLYTIC TIN PLATED.
2. SPRING: SWG 60C ELASTIC STEEL, 0.61mm (0.024") THICK. NICKEL PLATED.
3. ROHS 2 COMPLIANT

Tolerance (Except as noted)	 Memory Protection Devices, Inc 200 Broad Hollow Road, Farmingdale, New York 11735		
decimal ±.5 (.020)			Scale Drawn By B.S. Approved By T.B.
Fractional ± .8 (.030)	Title "AA" BATTERY NEGATIVE CONTACT		
Angular ± 3°	Date 11/21/14	Drawing Number SN-T5-1	