

Customer Information Sheet

DRAWING No.: M80-887XXX

SHEET 2 OF 2

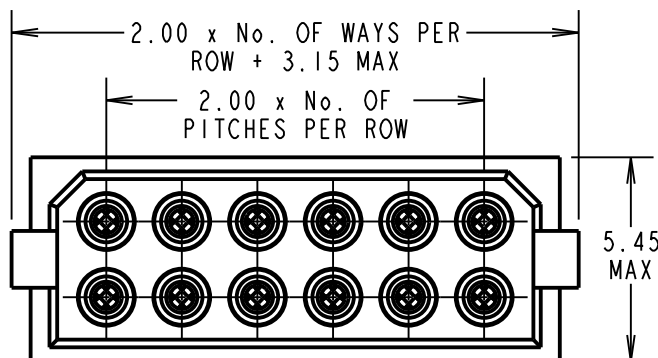
IF IN DOUBT - ASK

(C)

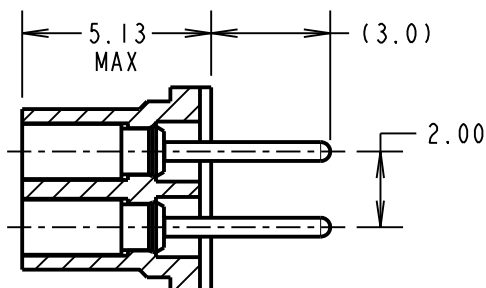
NOT TO SCALE

THIRD ANGLE PROJECTION

ALL DIMENSIONS IN mm



SECTION X-X



SPECIFICATIONS:

MATERIAL:

MOULDING = GLASS-FILLED POLYESTER,
UL94V-0, BLACK

CONTACT CLIP = BERYLLIUM COPPER

CONTACT SHELL = BRASS

FINISH:

01 = 0.3µ GOLD CLIP, 3.5-5.0µ TIN/LEAD SHELL

05 = 0.3µ GOLD CLIP, 0.25-0.3µ GOLD SHELL

ELECTRICAL:

CURRENT RATING AT 25°C = 3.0A MAX

CURRENT RATING AT 85°C = 2.2A MAX

WORKING VOLTAGE = 800V AC/DC

VOLTAGE PROOF = 1200V AC/DC

CONTACT RESISTANCE = 25 mΩ MAX

INSULATION RESISTANCE = 100 MΩ MIN

MECHANICAL:

DURABILITY = 500 OPERATIONS

INSERTION FORCE (Ø0.5mm GAUGE) = 2.8N MAX

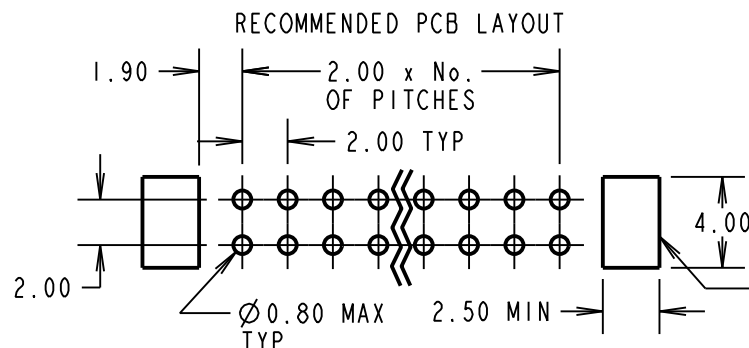
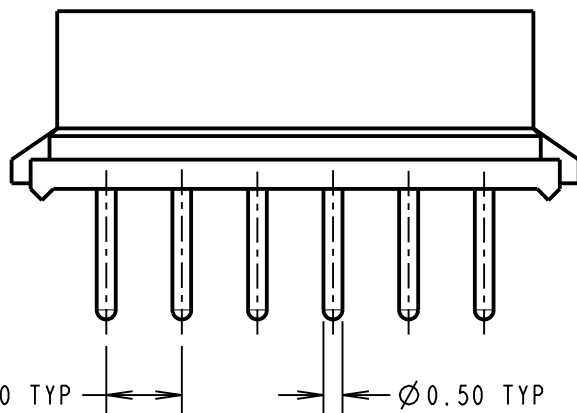
WITHDRAWAL FORCE (Ø0.5mm GAUGE) = 0.2N MIN

ENVIRONMENTAL:

TEMPERATURE RANGE = -55°C TO +125°C

PACKING:

TUBE

FOR COMPLETE SPECIFICATION, SEE COMPONENT
SPECIFICATION C005XX (LATEST ISSUE)

ORDER CODE:

M80-887XXX

TOTAL No. OF WAYS:

04, 06, 08, 10, 12, 14,
16, 18, 20, 26, 34, 44

FINISH

01 = GOLD CLIP, TIN/LEAD SHELL
05 = GOLD CLIP, GOLD SHELL

BRITISH STANDARD

ORDER CODE:

B5741-2XX-F-T-X

TOTAL No. OF WAYS:

04, 06, 08, 10, 12, 14, 16,
18, 20, 26, 34, 44

FINISH:

0 = GOLD CLIP, TIN/LEAD SHELL
2 = GOLD CLIP, GOLD SHELL

SB	15	05.03.12	11672
NAME	ISS.	DATE	C/NOTE
APPROVED: S.BENNETT			
CHECKED: S.FLOWER			
DRAWN: JM BROOKES			
CUSTOMER REF.:			
ASSEMBLY DRG:			

HARWINwww.harwin.com
technical@harwin.comTHIS DRAWING AND ANY
INFORMATION OR DESCRIPTIVE
MATTER SET OUT HEREON ARE
CONFIDENTIAL AND COPYRIGHT
PROPERTY OF THE HARWIN
GROUP AND MUST NOT BE
DISCLOSED, LOANED, COPIED
OR USED FOR MANUFACTURING,
TENDERING OR FOR ANY
OTHER PURPOSE WITHOUT
THEIR WRITTEN PERMISSION.

TOLERANCES

X. = ±1mm
X.X = ±0.25mm
X.XX = ±0.10mm
X.XXX = ±0.01mm

ANGLES = ±5°

UNLESS STATED

MATERIAL:

SEE ABOVE

FINISH: SEE ABOVE

S/AREA: mm²TITLE: DATAMATE 2mm PITCH
DIL VERTICAL PC TAIL
SOCKET ASSEMBLY

DRAWING NUMBER:

M80-887XXXSHT
2 OF 2

Mouser Electronics

Authorized Distributor

Click to View Pricing, Inventory, Delivery & Lifecycle Information:

Harwin:

[M80-8870605](#) [M80-8871005](#) [M80-8871205](#) [M80-8870805](#) [M80-8870405](#) [M80-8873401](#) [M80-8872601](#) [M80-8872001](#) [M80-8874401](#) [M80-8874405](#) [B5741-218-F-T-2](#) [B5741-218-F-T-0](#) [B5741-208-F-T-2](#) [B5741-208-F-T-0](#) [B5741-234-F-T-0](#) [B5741-234-F-T-2](#) [B5741-210-F-T-0](#) [B5741-214-F-T-0](#) [B5741-212-F-T-0](#) [B5741-216-F-T-0](#) [B5741-210-F-T-2](#) [B5741-214-F-T-2](#) [B5741-212-F-T-2](#) [B5741-216-F-T-2](#) [B5741-226-F-T-2](#) [B5741-220-F-T-2](#) [B5741-220-F-T-0](#) [B5741-226-F-T-0](#) [B5741-206-F-T-0](#) [B5741-204-F-T-0](#) [B5741-206-F-T-2](#) [B5741-204-F-T-2](#) [M80-8873405](#) [M80-8872605](#) [M80-8872005](#) [M80-8870601](#) [M80-8871801](#) [M80-8871805](#) [M80-8871001](#) [M80-8871401](#) [M80-8871405](#) [M80-8871201](#) [M80-8870801](#) [M80-8871601](#) [M80-8871605](#) [M80-8870401](#)