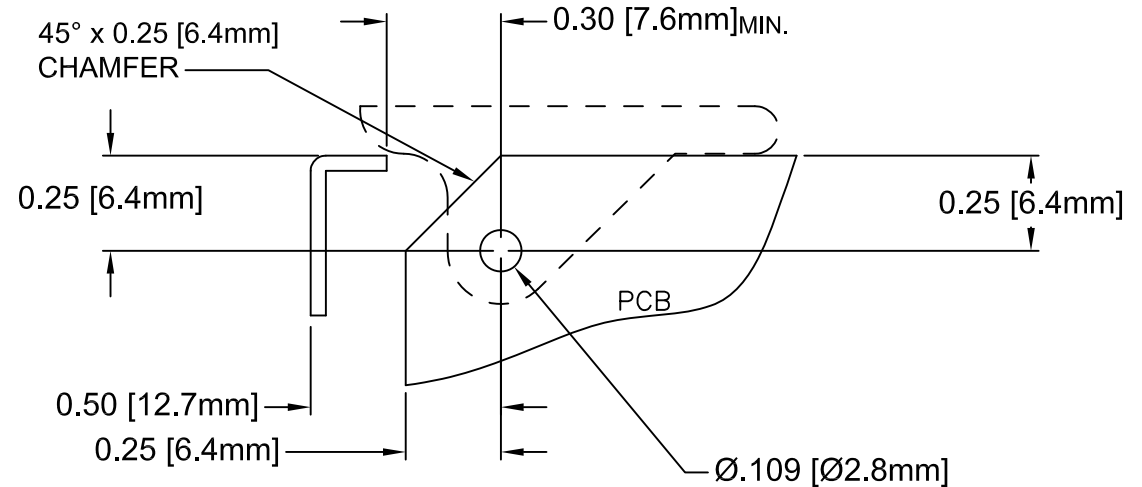
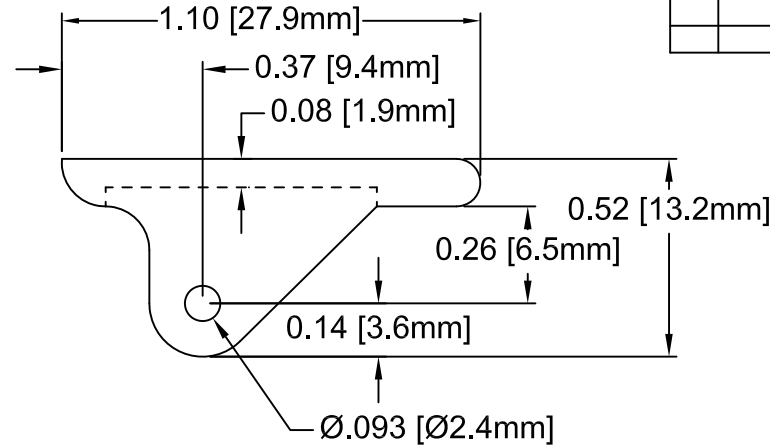
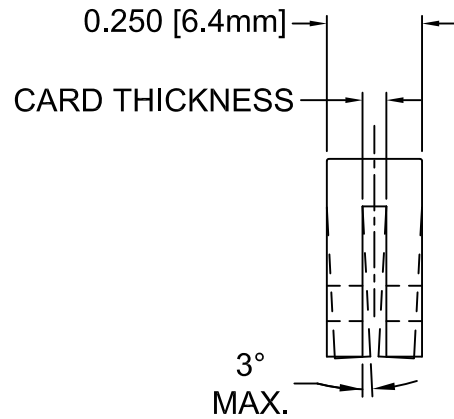




| REV. | DESCRIPTION | DATE | APPROVED |
|------|-----------------------------------|----------|----------|
| F | Production Release. | 02/24/04 | M. C. |
| G | Added Max. Allowable Draft Angle. | 06/13/13 | T. Y. |
| | | | |
| | | | |



Recommended Application Layout

| PART NO. | BIVAR MT'L CODE | CARD THICK. |
|----------|----------------------|--------------|
| CP-36 NT | 03-NL (#2, Natural) | 1/16"(1.6mm) |
| CP-36 BK | 03-NL-BK (#3, Black) | |
| CP-36 WE | 04-WE (#4, White) | |
| CP-39 NT | 03-NL (#2, Natural) | 3/32"(2.4mm) |
| CP-39 BK | 03-NL-BK (#3, Black) | |
| CP-39 WE | 04-WE (#4, White) | |

4. MATERIAL: NYLON 6/6, 94V-2, WHITE. BIVAR MATERIAL CODE 04-WE. BASF ULTRAMID NYLON 6/6 A3K WHITE.
3. MATERIAL: NYLON 6/6, 94V-2, BLACK. BIVAR MATERIAL CODE 03-NL-BK. BASF ULTRAMID NYLON 6/6 A3K NATURAL W/BLACK PIGMENT ADDED.
2. MATERIAL: NYLON 6/6, 94V-2, NATURAL. BIVAR MATERIAL CODE 03-NL. BASF ULTRAMID NYLON 6/6 A3K NATURAL.
1. GENERAL SPECIFICATIONS: BIVAR MOLDED COMPONENT SPECIFICATION BV00-E101.

| STANDARD TOLERANCE (UNLESS OTHERWISE SPECIFIED) | |  4 THOMAS, IRVINE, CA. 92618 TEL: (949) 951-8808 FAX: (949) 951-3974 | |
|---|---------|---|--|
| DECIMALS | ANGULAR | TITLE: CIRCUIT BOARD CARD EJECTOR PART NO: CP-3X REVISION: G | |
| .X ±.1 | X° ± 1° | | |
| .XX ±.01 | | | |
| .XXX ±.005 | | DESIGNED: Shane Irving CHECKED: M. Chen | DATE: 05/19/98 DATE: 09/09/03 |
|  | | CAGE CODE : 32559 SHEET # 1 OF 1 | REVISION: G |
| CAD GENERATED DOCUMENT, DO NOT MEASURE DRAWING. | | | |